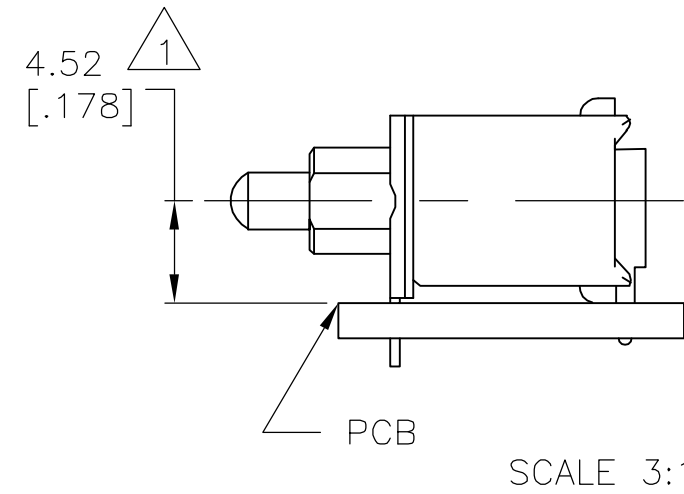
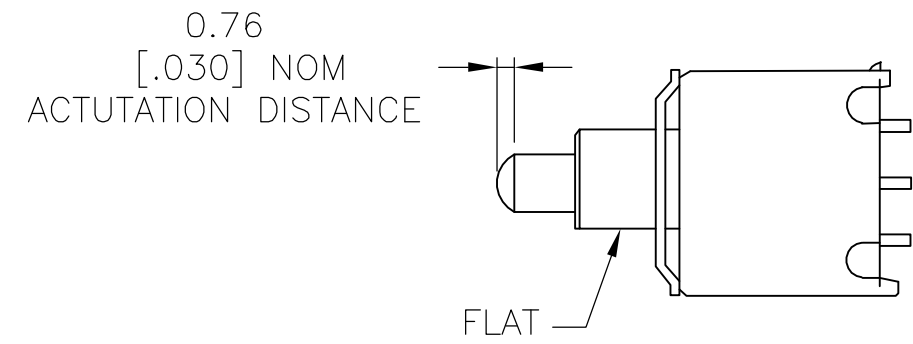


THIS DRAWING IS UNPUBLISHED. RELEASED FOR PUBLICATION
 © COPYRIGHT BY TYCO ELECTRONICS CORPORATION. ALL RIGHTS RESERVED.

| LOC | | DIST | | REVISIONS | | | |
|-----|-----|---------------|---------|-----------|------|--|--|
| P | LTR | DESCRIPTION | DATE | DWN | APVD | | |
| A | | ECO-06-000585 | 09AUG06 | BSV | MZ | | |



SPECIFICATIONS:

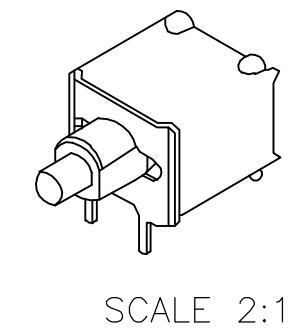
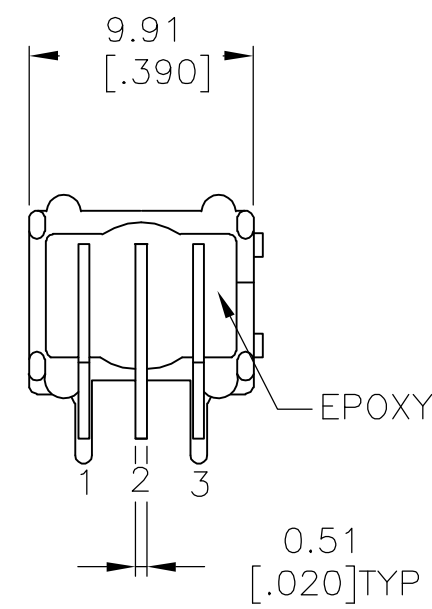
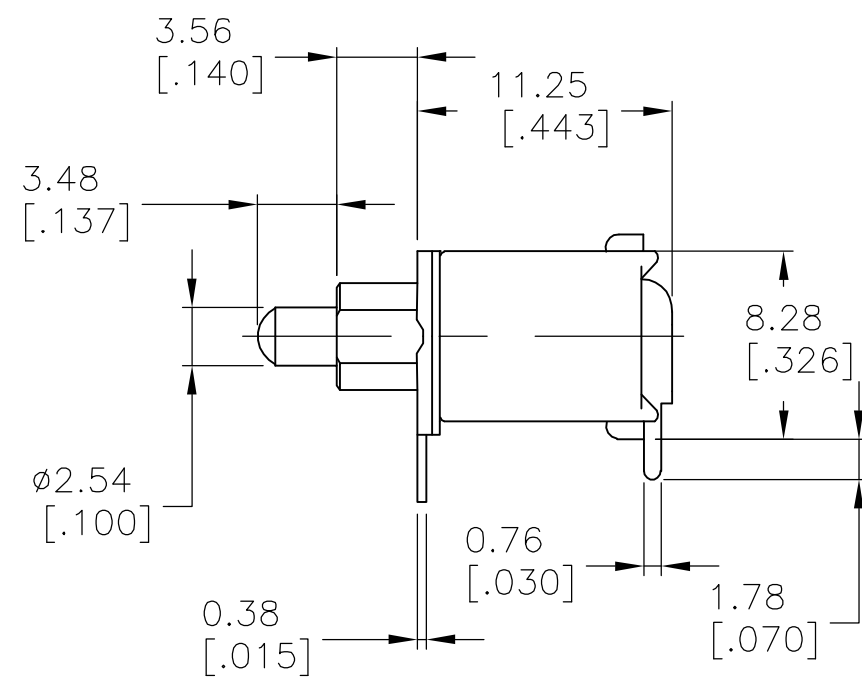
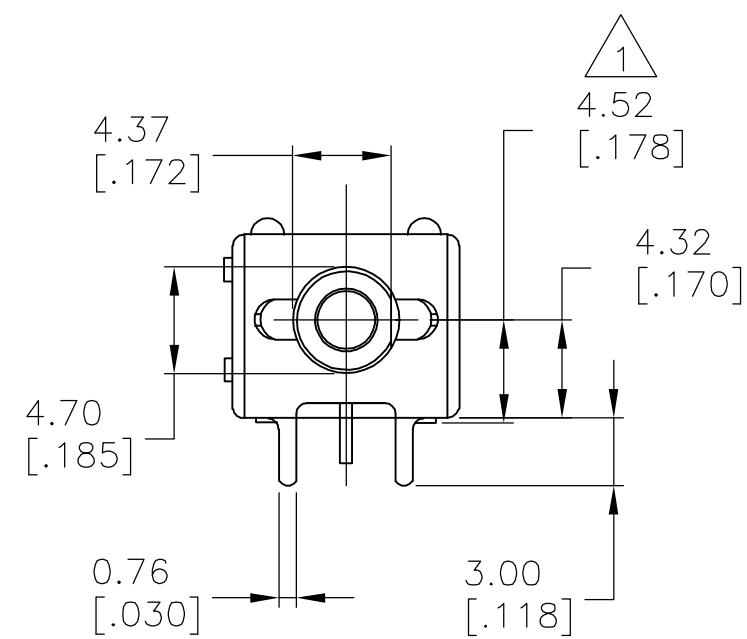
CURRENT RATING-0.4VA MAX., 20V MAX. (AC/DC).

INITIAL CONTACT RESISTANCE-20MILLIOHMS MAX.
@100mV & 1mA.

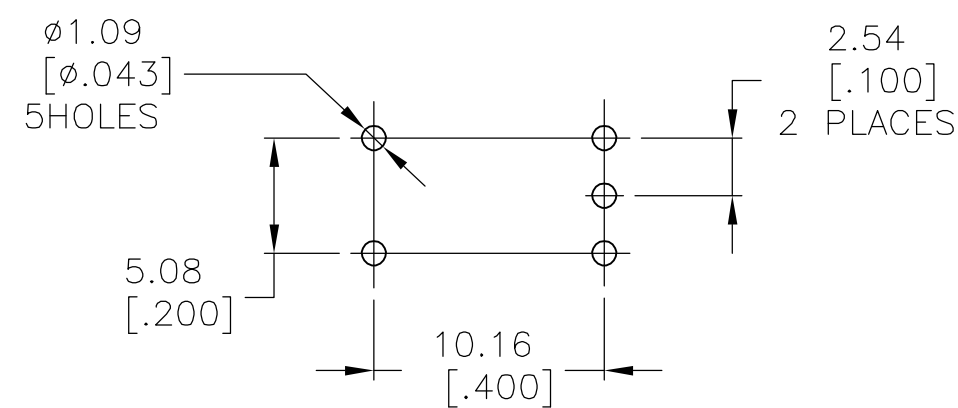
VOLTAGE WITHSTANDING-1000VAC BETWEEN
TREMINALS 1 & CASE GROUND FOR 1 MINUTE.

NOTES

△ ACTUAL DISTANCE OF CL FROM PCB WHEN MOUNTED.



| | |
|-----|-------------------------|
| (*) | BUTTON COLORS AVAILABLE |
| (0) | BLACK |
| (2) | RED |
| (6) | BLUE |



PCB HOLE LAYOUT
SCALE 5:1

NO CENTER TERMINAL ON "C" FUNCTION SWITCH

| | | |
|-----------------|-----|----------|
| TPB11FG-RA-ES** | 2-1 | 2-3(MOM) |
| TPB11CGRA-ES** | OFF | 3-1(MOM) |

| | | |
|--------------|------|------|
| SWITCH MODEL | FLAT | FLAT |
| | | |

TERMINAL CONNECTED WITH BUTTON
IN POSITION SHOWN.

NOTE:TERMINAL DESIGNATION NUMBERS
ARE FOR REFERENCE ONLY AND DO
NOT APPEAR ON SWITCHES.

| | | | | |
|--|--|-------------------------------|--|--------------------|
| THIS DRAWING IS A CONTROLLED DOCUMENT. | | DWN V.J.NARTINI 05DEC80 | tyco Tyco Electronics Corporation | |
| DIMENSIONS: mm [INCHES] | | CHK R.D 08DEC80 | Harrisburg, Pa 17105-3608 | |
| TOLERANCES UNLESS OTHERWISE SPECIFIED: | | APVD - | NAME PUSHBUTTON SWITCH (TPB11 *G-RA-ES*) | |
| 0 PLC ± - | | PRODUCT SPEC - | SIZE A2 | CAGE CODE 00779 |
| 1 PLC ± - | | APPLICATION SPEC - | DRAWING NO C=6-1437571-2 | |
| 2 PLC ± - | | WEIGHT - | RESTRICTED TO - | |
| 3 PLC ± .01 | | CUSTOMER DRAWING | SCALE 3:1 | SHEET 1 OF 1 |
| 4 PLC ± - | | | REV A | |
| ANGLES ± 1° | | | | |
| FINISH - | | | | |

6-1437571-2