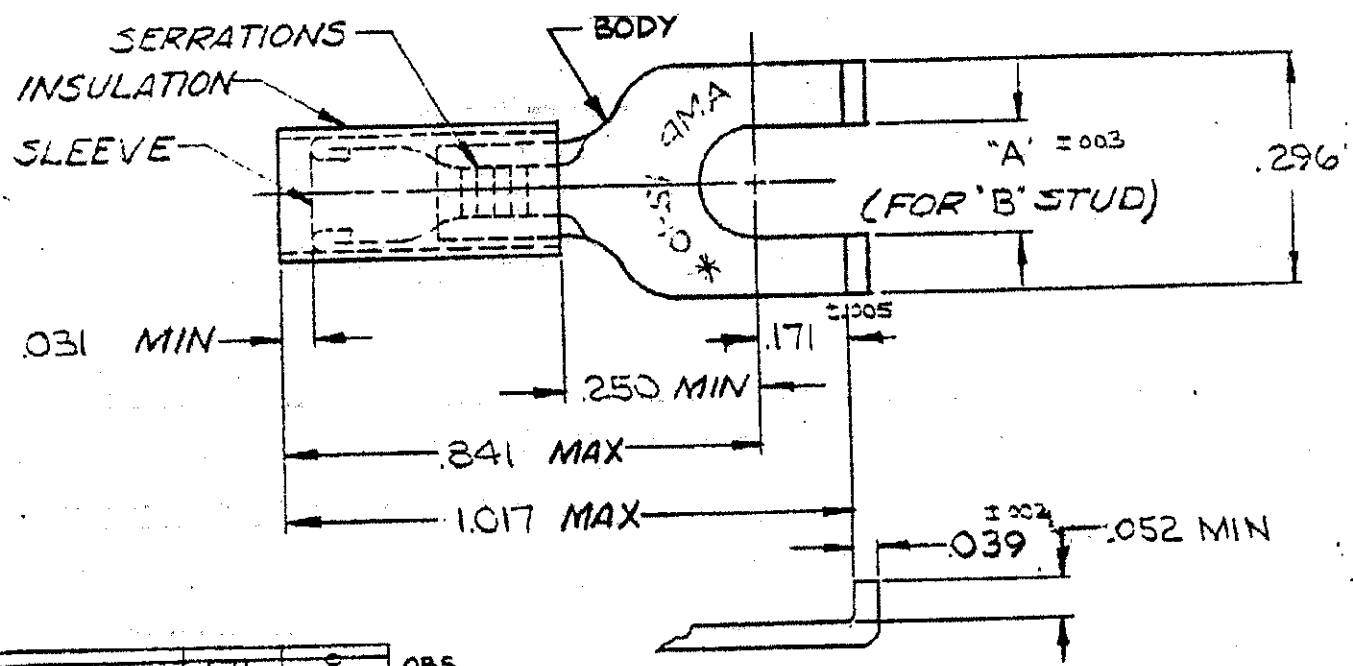


DRAWING MADE IN AMERICAN PROJECTION

REVISIONS			
LTR	DESCRIPTION	DATE	APPROVED
K1	REVISED PER ECO-11-005294	11APR11	HMR



<del>1-325150-0</del>	<del>.171</del>	<del>S</del>	OBS.
1-325150-0	.145	G	
325150	"A"	"B"	

FOR .150 TO .250 WIRE INS. DIA.

1	WIRE TERMINAL	<del>1-325150-0</del>	<b>SLEEVE: COPPER (QQ-C-576)</b> <b>BODY: COPPER (QQ-C-576)</b> <b>TIN PL (MIL-T-10727)</b> <b>INSULATION: NYLON</b> <b>COLOR: YELLOW</b>
1	325150 ON TAPE	1-325150-0	
50	LOOSE PC. BOX	3-325150-2	
1	WIRE TERMINAL	325150	
<b>MATERIAL &amp; FINISH</b>			
QTY DESCRIPTION PART NO		<b>MATERIAL &amp; FINISH</b>	
UNLESS OTHERWISE SPECIFIED DIMENSIONS ARE IN INCHES TOLERANCES ON: DECIMALS = .008 ANGLES = 5°		<b>TE Connectivity</b>	
MATERIAL  <b>SEE TABLE</b>		<b>WIRE TERMINAL</b> <b>P.I.D.G. - FLANGED SPADE</b> <b>WIRE SIZE: 12-10</b>	
CONTRACT NO. <del>1</del>		<b>TE</b>	
DR. <del>5-13-70</del>		NAME	
CHK. <del>5-13-70</del>		<b>WIRE TERMINAL</b>	
APPD. <del>5-13-70</del>		<b>P.I.D.G. - FLANGED SPADE</b>	
REL. <del>5-13-70</del>		<b>WIRE SIZE: 12-10</b>	
DSGN/APPD. <del>5-13-70</del>		SIZE <b>A</b>	CODE IDENT NO. <b>00779</b>
OTHER APPD.		NUMBER <b>325150</b>	
SCALE <b>NTS</b>		SHEET <b>1 OF 1</b>	
<b>CUSTOMER DRAWING</b>			