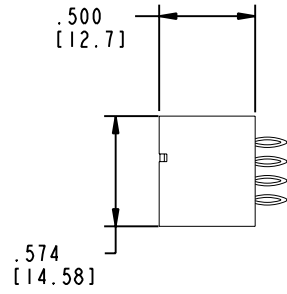
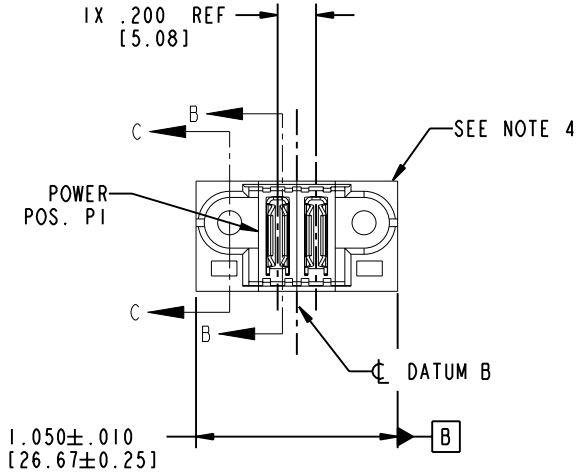


Tous droits strictement réservés. Reproduction ou communication a des tiers interdite sous quelque forme que ce soit sans autorisation écrite du propriétaire. Propriété de c FCI. Droits de reproduction FCI.

All rights strictly reserved. Reproduction or issue to third parties in any form whatever is not permitted without written authority from the proprietor. Property of FCI. Copyright FCI.

PRODUCT NO. 51952-086-- NOTE ③	POWER			
	E1	P1	P2	E2



CODE	DIM "M" MATING LENGTH	CONTACT TYPE
PC	N/A [N/A]	POWER

mat'l code SEE NOTE 2				tolerances unless otherwise specified		CUSTOMER		 www.fciconnect.com		
ltr	ecn no.	dr	date	linear	.XX±.01/0.X±0.3		COPY		 INCH/MM	
A	DG06-0004	SW	01/05/06		.XXX±.005/0.XX±0.13		projection			title
					.XXX±.0020/0.XX±0.051		 scale 1:1			2P VERTICAL PF HEADER
				angles	0° ± 2°		dr STEVEN WANG 01/05/06 engr STEVEN WANG 01/05/06 chr BEER FU 01/05/06 appd JOSEPH HSIA 01/05/06		product family PwrBlade code 213 size dwg no 51952-086 sheet 1 of 4	
sheet index	revision sheet	A 1	A 2	A 3	A 4					

Pro/E

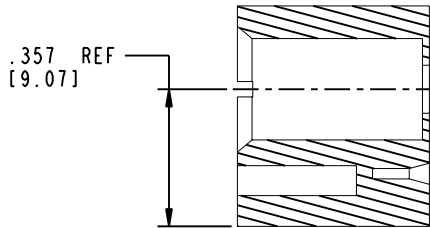
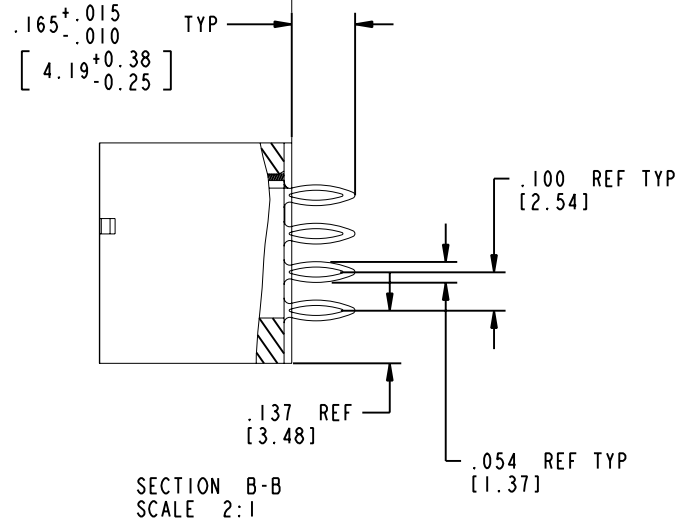
cage code 22526

Tous droits strictement reserves. Reproduction ou communication a des tiers interdite sous quelque forme que ce soit sans autorisation écrite du propriétaire. Propriete de c FCI. Droits de reproduction FCI.

All rights strictly reserved. Reproduction or issue to third parties in any form whatever is not permitted without written authority from the proprietor. Property of FCI. Copyright FCI.

PRODUCT NUMBER

51952-086 --
NOTE ③



SECTION C-C
SCALE 2:1

mat'l code				SEE NOTE 2		tolerances unless otherwise specified		CUSTOMER		 www.fciconnect.com	
ltr	ecn no.	dr	date	linear	.XX±.01/0.X±0.3		COPY		 title 2P VERTICAL PF HEADER		
A					.XXX±.005/0.XX±0.13		projection				
					angles	.XXX±.0020/0.XX±0.051		 product family PwrBlade code 213			
				dr	STEVEN WANG	01/05/06	INCH/MM		size	dwg no	sheet
				engr	STEVEN WANG	01/05/06	scale		A	51952-086	2 of 4
				chr	BEER FU	01/05/06	1:1				
				appd	JOSEPH HSIA	01/05/06					
sheet index	revision sheet										

Pro/E

cage code 22526

PDM: Rev:A

STATUS: Released

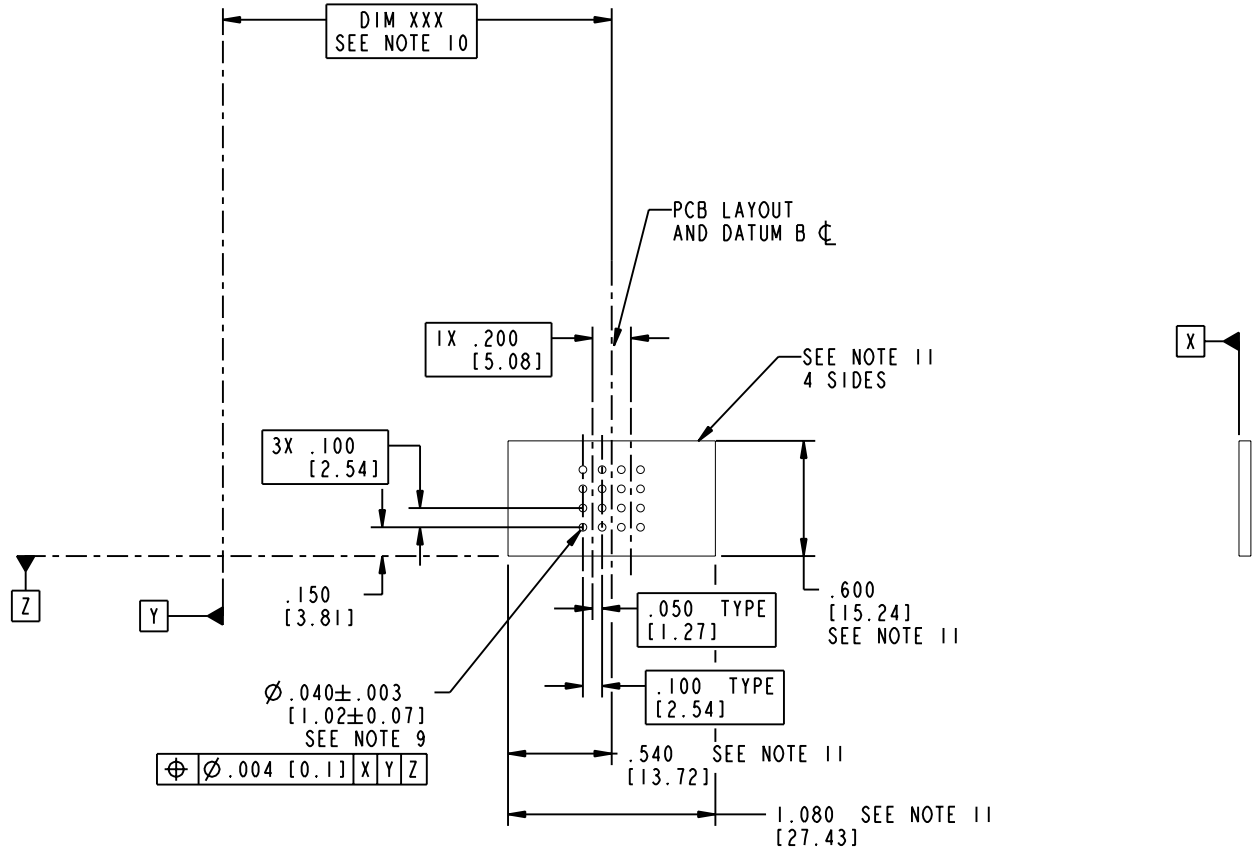
Printed: Dec 20, 2010

Tous droits strictement reserves. Reproduction ou communication a des tiers interdite sous quelque forme que ce soit sans autorisation écrite du propriétaire. Propriete de c FCI. Droits de reproduction FCI.



All rights strictly reserved. Reproduction or issue to third parties in any form whatever is not permitted without written authority from the proprietor. Property of FCI. Copyright FCI.

PRODUCT NUMBER
51952-086..
 NOTE ③



mat'l code				SEE NOTE 2		tolerances unless otherwise specified		CUSTOMER		 www.fciconnect.com	
ltr	ecn no.	dr	date	linear	.XX±.01/0.XX±0.3	COPY		projection		title	
A				angles	.XXX±.005/0.XX±0.13	INCH/MM				2P VERTICAL PF HEADER	
				dr	.XXX±.0020/0.XX±0.051	dr		product family		code	
				enr	0° ± 2°	STEVEN WANG 01/05/06		PwrBlade		213	
				chr		STEVEN WANG 01/05/06		size		sheet	
				appd		BEER FU 01/05/06		51952-086		3 of 4	
						JOSEPH HSIA 01/05/06		scale		A	
sheet index		revision sheet						1:1			

Pro/E

cage code **22526**

PDM: Rev:A

STATUS: Released

Printed: Dec 20, 2010

Tous droits strictement réservés. Reproduction ou communication o des tiers interdite sous quelque forme que ce soit sans autorisation écrite du propriétaire. Propriete de c FCI. Droits de reproduction FCI.

A
FCI

All rights strictly reserved. Reproduction or issue to third parties in any form, whatever is not permitted without written authority from the proprietor. Property of FCI. Copyright FCI.

PRODUCT NUMBER
51952-086..
NOTE ③

NOTES:

1. DIMENSIONS AND TOLERANCES ARE IN ACCORDANCE WITH ASME Y14.5M, 1994 UNLESS OTHERWISE SPECIFIED.

CONNECTOR NOTES:

② HOUSING MATERIAL: UL 94 V-0 GLASS FILLED HIGH-TEMP THERMOPLASTIC
POWER CONTACT MATERIAL: COPPER ALLOY
SIGNAL PIN MATERIAL: COPPER ALLOY

3. PLATING:
51952-086, 51952-086LF PLATING SPEC. WERE SHOWN IN THE PRINT OF 10064183.

④ MANUFACTURER'S NAME, P/N, AND DATE CODE TO APPEAR ON THIS SURFACE.

5. PRODUCT SPECIFICATION GS-12-149.
APPLICATION SPECIFICATION BUS-20-067.

6. PACKAGED IN TRAYS.

PCB NOTES:

7. ALL HOLE DIAMETERS ARE FINISHED HOLE SIZE.


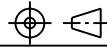
8. MOUNTING HOLES, WHERE APPLICABLE, ARE UNPLATED.

⑨ $\varnothing .0453 \pm .0010$ [1.151 ± 0.025] DRILLED HOLES PLATED WITH .0003 [0.008] MIN SnPb OVER .001 [0.03] TO .003 [0.08] Cu PLATING TO ACHIEVE $\varnothing .040 \pm .003$ [1.02 ± .07] HOLE.

⑩ "DIM XXX" TO BE DETERMINED BY THE CUSTOMER.

⑪ CONNECTOR KEEP-OUT ZONE.

11. FOR PRESS FIT APPLICATION USE FCI CAM TOOL 430169-XXX.

mat'l code		SEE NOTE 2		tolerances unless otherwise specified		CUSTOMER		 FCI www.fciconnect.com	
ltr	ecn no.	dr	date	linear	.XX±.01/0.X±0.3	COPY		title	
A				linear	.XXX±.005/0.XX±0.13	projection		2P	
				angles	.XXX±.0020/0.XX±0.051			VERTICAL PF HEADER	
				dr	STEVEN WANG 01/05/06	INCH/MM		product family	
				enr	STEVEN WANG 01/05/06	scale		PwrBlade	
				chr	BEER FU 01/05/06	1:1		code	
				appd	JOSEPH HSIA 01/05/06			213	
sheet index		revision sheet						size	
								dwg no	
								A 51952-086	
								sheet	
								4 of 4	

Pro/E

cage code **22526**

PDM: Rev:A

STATUS: **Released**

Printed: Dec 20, 2010