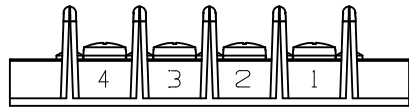
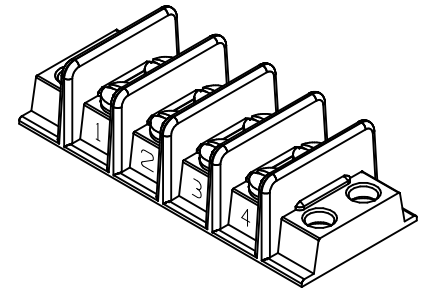
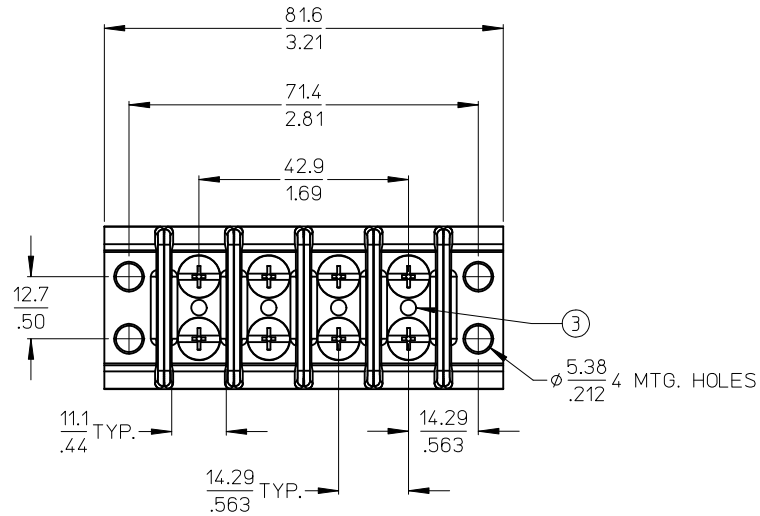
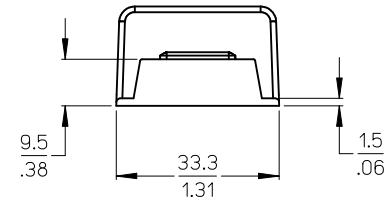
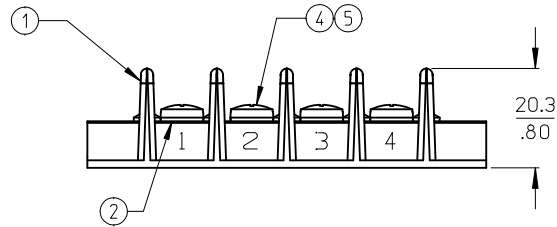


MATERIAL NUMBER	ENGINEERING NUMBER
382290004	22A004-12A
382290304	22A004-49-12A



REF. BACK VIEW



NOTES:

1. MATERIAL: SEE TABLE
2. FINISHES: SEE TABLE
3. PRODUCT SPECIFICATION: NOT REQUIRED
4. IMPRINT OPTION: IMPRINT BOTH SIDES STYLE 12A
5. ROHS COMPLIANT

5	8	SCREW, #8-32, BIND. HD., PHIL-SLOT, (-49 OPT)	BRASS	NICKEL PLATE
4	8	SCREW, #8-32, BIND. HD., PHIL-SLOT, (STD)	STEEL	ZN, CLEAR CHROMATE
3	4	SCREW, U-DRIVE, #0	STEEL	ZN, CLEAR CHROMATE
2	4	EYELET TERMINAL	BRASS	NICKEL PLATE
1	1	MOLDING, CB BTS, 600V	PHENOLIC	BLACK
ITEM	QTY.	DESCRIPTION	MATERIAL	FINISH

INITIAL RELEASE  
 EC NO: WNA2012-0001  
 DRAWN: JENCINAS 2011/09/02  
 CHKD: JMACNEIL  
 APPR: JMACNEIL 2011/09/07

QUALITY SYMBOLS  
 ▽=0  
 ▽=0

GENERAL TOLERANCES (UNLESS SPECIFIED)	
	mm INCH
4 PLACES	± --- ± ---
3 PLACES	± --- ± .005
2 PLACES	± 0.13 ± .010
1 PLACE	± 0.3 ± ---
ANGULAR ± 2 °	
DRAFT WHERE APPLICABLE MUST REMAIN WITHIN DIMENSIONS	

QUALITY SYMBOLS  
 ▽=0  
 ▽=0

DIMENSION STYLE <b>MM/IN</b>	SCALE <b>1:1</b>	DESIGN UNITS INCH	THIRD ANGLE PROJECTION
DRAWN BY JENCINAS	DATE 2011/09/02	TITLE <b>14.29/.563" DBL ROW BTS, .800" TALL RIBS, CB IMPRINTING BOTH SIDES</b>	
CHECKED BY	DATE	MOLEX INCORPORATED	
APPROVED BY JMACNEIL	DATE 2011/09/07	DOCUMENT NO. <b>SD-38229-006</b>	SHEET NO. 1 OF 1
THIS DRAWING CONTAINS INFORMATION THAT IS PROPRIETARY TO MOLEX INCORPORATED AND SHOULD NOT BE USED WITHOUT WRITTEN PERMISSION			