

# 2000 CONSOLE- SERIES

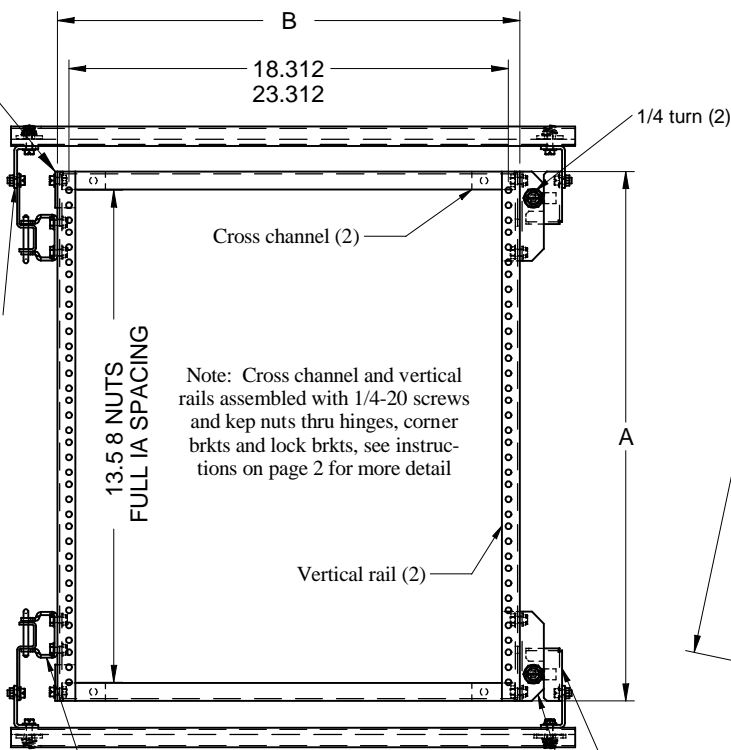
## ASSEMBLY INSTRUCTIONS FOR TURRET SWING FREAME ASSEMBLY

BUL10060  
REV. A  
PAGE 1 OF 2

PART NO.	A	B
2CSFT19	22.05	19.275
2CSFT24	22.05	24.275

Corner brkt hinge side top & bot. (2)  
mount using 1/4-20 screw and kep nut

Swing frame  
hinge support  
(2) mounted  
using 1/4-20  
screw & kep  
nut (4)



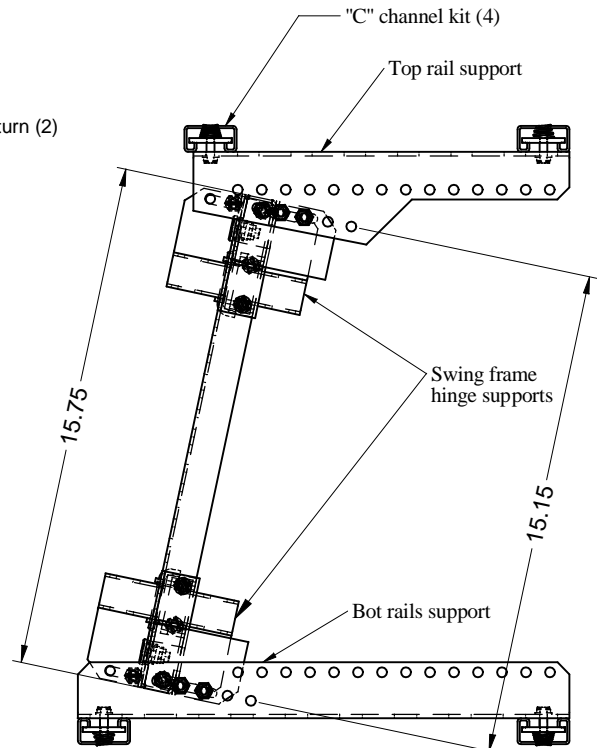
Note: Cross channel and vertical rails assembled with 1/4-20 screws and kep nuts thru hinges, corner brkts and lock brkts, see instructions on page 2 for more detail

Front view

Hinge mounted to frame(2)  
using 1/4-20 screw & kep  
nut (4) see page 2 for detail

Stop brkt (2)  
mount using 1/4-20  
screw and kep nut (4) see  
page 2 for more detail

Locking brkt (2)  
mount using 1/4-20  
screw and kep nut (4) see  
page 2 for more detail



Side view

### TOOL BOX



3/8, 7/16" Socket  
Wrench



3/8, 7/16" Open  
End Wrench

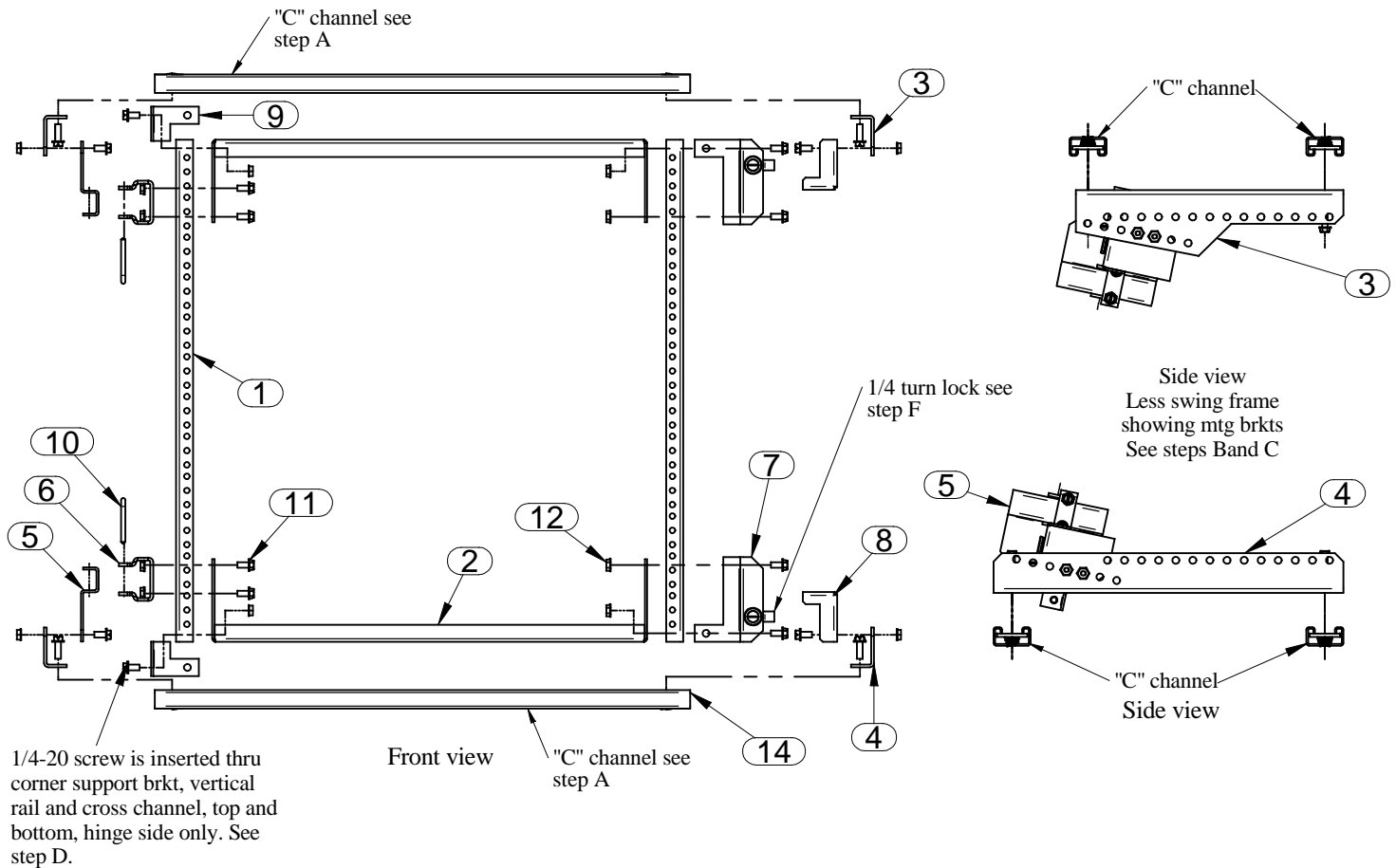


1/4 Slot Head  
Screw Driver



**HAMMOND  
MANUFACTURING™**  
ELECTRONICS GROUP

visit our website @ [www.hammondmfg.com](http://www.hammondmfg.com)



### PARTS LIST

ITEM No.	DESCRIPTION	QTY
1	VERTICAL RAIL	2
2	CROSS CHANNEL	2
3	SUPPORT BRACKET TOP (NOT INC)	2
4	SUPPORT BRACKET BOT (NOT INC)	2
5	HINGE BRACKET	2
6	HINGE BRACKET	2
7	LOCKING BRACKET	2
8	STOP BRACKET	2
9	CORNER SUPPORT BRACKET	2
10	HINGE PIN	2
11	1/4-20 SCREW	16
12	1/4-20 KEP NUT	16
13	SPRING STEEL CATCH	2
14	1/4-20 SPRING NUTS (NOT INC)	8

### ASSEMBLY INSTRUCTIONS:

- A) Mount C channel mounting kit as per instructions in 2CMC kit purchased separately
- B) Mount top and bottom support brkts (items 3 & 4) as shown above and also as shown in 2CYRSK kits purchased separately
- C) Mount hinge brkts (item 5) and stop brkts (item 8) onto rail supports top and bottom. Assemble using 1/4-20 screws and nuts (items 11 & 12). Note that frames can be mounted hinged left or right hand. Left hand hinge assembly is shown.
- D) Assemble swing frame parts: EIA spaced vertical rails (item 1) to cross channels (item 2), using locking brkts (item 7), hinge (item 6), and corner brkts (item 9). Secure using 1/4-20 hardware supplied.
- E) Mount swing frame onto hinge bracket using hinge pins (item 10) top and bottom. Secure hinge pin using spring catch (item 14).
- F) Close frame against the stop bracket on lock side and turn 1/4 turn lock to lock frame into place.

#### TOOL BOX



3/8, 7/16" Socket  
Wrench



3/8, 7/16" Open  
End Wrench



1/4 Slot Head  
Screw Driver

