

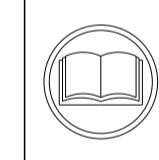
ATLANTIC VERSION TERMINATOR INTERFACE ADAPTER	PART NUMBER	REVISION	DESCRIPTION	FEED TYPE	APPLICATOR STYLE CONVERSION CHART						
					CONVERT TO	PART NUMBERS REQUIRED					
	2266665-2	A	FINE CRIMP HEIGHT ADJUST	PNEUMATIC	-	-	-	-	-	-	
	2266665-5	A	FINE CRIMP HEIGHT ADJUST	SERVO LATCH PLATE Δ 4	SERVO LATCH PLATE	2119951-1	-	8-2266665-5	1901094-3	-	2168400-6 (QUANTITY 2)
					SMART APPLICATOR	2161326-1	-	8-2266665-4	-	-	
	2266665-6	A	NON-CRIMP HEIGHT ADJUST	Δ 4 SERVO LATCH PLATE Δ 2	PNEUMATIC FEED	2119950-1	1338685-1	5-18022-5	2119641-1	2119799-1	2063440-1
					-	-	-	-	-	-	
	2266665-7	A	FINE CRIMP HEIGHT ADJUST	NONE	-	-	-	-	-	-	-
	7-2266665-7	A	CRIMP TOOLING KIT	-	-	-	-	-	-	-	-

APPLICATOR DATA		
CRIMP	SIZE	TYPE
WIRE	4.42 mm [1.74]	F
INSUL	-	-

APPLICATOR INSTRUCTIONS
408-10389

TERMINAL DATA: AMPHENOL TERMINAL AMPHENOL CRIMP SPECIFICATION			
TERMINAL NAME: AMPHENOL H4 CONTACT			
WIRE STRIP LENGTH		INSULATION DIAMETER RANGE	
4.56-4.95 mm [1.80-.195 IN]		\varnothing 3.18 mm [1.25 IN] MAX	
TERMINAL APPLICATION SPECIFICATION	H4 CONTACT Rev -	-	-
TERMINALS APPLIED Δ 0			
TE TERMINAL	AMPHENOL TERMINAL	TE TERMINAL	AMPHENOL TERMINAL
2113652-1	H4FF4R	2113652-2	H4FM4R

WIRE SIZE	CRIMP HEIGHT mm [INCH]	CRIMP HEIGHT REFERENCE SETTING
6.00mm2	2.42 +/- 0.05 [1.095 +/- .002]	5.6
4.00mm2	2.30 +/- 0.05 [1.091 +/- .002]	6.4



- Δ RECOMMENDED SPARE PARTS
- Δ GREASE BEARING SURFACES LIGHTLY
- 3. LUBRICATE DAILY PER THE APPLICATOR INSTRUCTION SHEET SUPPLIED WITH THE APPLICATOR.
- Δ APPLICATOR SPECIFIC DATA TO BE ENTERED INTO BLANK MEMORY CHIP AT ASSEMBLY. SEE BELOW FOR PART NUMBER:
 PNEUMATIC FEED WITH "SMART APPLICATOR" CONVERSION: 8-2266665-4
 SERVO FEED WITH "FINE CRIMP HEIGHT ADJUST": 8-2266665-5
 SERVO FEED WITH "NON-CRIMP HEIGHT ADJUST": 8-2266665-6
- 5. ADJUSTMENT OF THE STRIPPER MAY BE REQUIRED WHEN MOVING THE APPLICATOR BETWEEN BENCH AND LEADMAKER APPLICATIONS.
- Δ APPLY PART NUMBER 1-23419-5 LOCTITE TO THREADS OF ITEM 62. FOR -6 ONLY APPLY PART NUMBER 1-23419-5 LOCTITE TO THREADS OF ITEM 37.
- Δ GREASE THREADS, GROOVE AND O-RING ON ITEMS 35 & 252.
- Δ MAGNET, ITEM 166 MUST BE ORIENTED CORRECTLY IN ORDER TO PROPERLY ACTUATE THE COUNTER.
- Δ CRIMP HEIGHT REFERENCE SETTING WAS THE SETTING USED WHEN THE APPLICATOR WAS QUALIFIED AT THE FACTORY. ADJUSTMENT MAY BE NECESSARY WHEN RUNNING APPLICATOR IN THE FIELD.
- Δ 10 TERMINAL PITCH NOT COMPATIBLE WITH MECHANICAL FEED.
- Δ 11 TO CONVERT THE APPLICATOR TO A NON-CARRIER CUTTING STYLE, REMOVE ITEM 13 AND ATTACH TO THE LOCATION ON THE BACK SIDE OF THE HOUSING. REFER TO INSTRUCTION SHEET FOR ADDITIONAL INFORMATION.
- Δ 12 WHEN ASSEMBLING A NON CRIMP HEIGHT ADJUST APPLICATOR (-6) USE SHIMS FROM ITEM 260 TO ACHIEVE A NOMINAL SHIM HEIGHT OF 3.38.
- Δ 13 CUT TO LENGTH AT ASSEMBLY.

***WARNING**
 ON INSTALLATION, SET WIRE DISC, ITEM 40 TO LARGEST WIRE SIZE SETTING. USE OF SETTINGS BELOW MINIMUM REQUIRED CRIMP HEIGHT SETTING WILL CAUSE DAMAGE TO CRIMP TOOLING.

-77	-7	-6	-5	-2	PART NO	DESCRIPTION	ITEM NO
-	2	2	2	2	2168083-1	SCR, SKT HD CAP, RoHS, M3 X 8.0	269

ATLANTIC VERSION
 Shown on sheets 1 of 4 & 2 of 4
 (Pacific version shown on sheets 3 of 4 & 4 of 4)

SET UP GAUGE	LOC	DIST	REVISIONS					
2119599-1	A	66	P	LTN	DESCRIPTION	DATE	OWN	APVD
			A		RELEASED	18FEB2015	RK	GB

-	1	1	1	1	1-1633782-1	FENCE		267
-	-	1	-	-	2119957-2	APPLICATOR SHIM PACK		260
-	1	-	1	1	8-21084-0	O-RING, .676 ID, .070 DIA. MAT.		252
-	-	-	-	1	2119640-1	PUSH ROD, AIR FEED		250
-	-	-	-	1	2079988-1	BUSHING, LCH5-12, MISUMI		249
-	-	-	-	1	2119641-1	FEED CAM, AIR FEED		248
-	1	-	1	1	2119798-1	DETENT PIN		247
-	1	-	1	1	1-22279-3	SPRING, COMPRESSION		246
-	-	1	-	-	2119758-1	RAM, AMP STYLE, SIDE FEED, NON-ADJ.		245
-	1	1	1	1	7-18023-7	SCR, SKT HD CAP M3 X 4.0		241
-	-	2	2	-	2168400-6	SHCS, LOW HEAD, RoHS, M5 X 16		240
-	-	-	-	1	2063440-1	AIR FEED MODULE		238
-	-	1	1	-	2119740-2	TAG, IDENTIFICATION		213
-	-	1	1	-	1901094-3	SPACER, FEEDER		198
-	-	-	-	2	21045-3	RING, RETAIN, EXTERN, 3/16 CRESCENT		172
-	1	1	1	1	994969-1	MAGNET, RARE EARTH HIGH ENERGY		166
-	REF	REF	REF	REF	994970-2	COUNTER, MAGNETIC		164
-	-	-	-	1	240638-1	SPRING, FEED FINGER		163
-	-	-	-	1	3-23627-7	PIN, RETAIN, GRVD, 3/16 X .854		137
-	-	-	-	1	2119799-1	HOLDER, FEED FINGER, AF		136
-	-	REF	REF	-	SEE NOTE 4	MEMORY CHIP, PROGRAMMED		135
-	-	1	1	-	1633743-1	SERVO FEED LATCH ASM		133
-	-	REF	REF	-	2119944-1	FEED FINGER ASSEMBLY, SF		117
-	1	1	1	1	455888-5	SPACER, CRIMPER		82
-	2	2	2	2	2079383-4	SCR, BHSC, RoHS (M4 X 8)		79
-	1	1	1	1	1803096-1	EXTENSION PLATE		78
-	1	1	1	1	2119956-1	DOCUMENTATION PACKAGE		71
-	1	1	1	1	2119791-9	DEPRESSOR, WIRE		70
-	1	1	1	1	2119943-1	WASHER, SPACER		69
-	1	-	-	1	2119740-1	TAG, IDENTIFICATION		67
-	2	2	2	2	2168078-1	SCREW, DRIVE, RH, RoHS, 2 x .188		66
-	1	-	1	1	2119793-1	LIMITER, ADJUSTMENT BOLT		63
-	3	-	3	3	992763-5	SCR, SET, SOC, CONE POINT, M3 X 4.0		62
-	1	1	1	1	2079383-4	SCR, BHSC, RoHS (M4 X 8)		60
-	-	-	-	1	5-18022-5	SCR, HEX HD CAP, M4 X 6.0		59
-	-	-	-	1	1338685-1	PAWL, FEED		56
-	4	4	4	4	2168400-1	SHCS, LOW HEAD, RoHS, M4 X 12		54
-	2	2	2	2	2168083-9	SCR, SKT HD CAP, RoHS, M4 X 20		53
-	1	1	1	1	5018030-1	NUT, HEX, REG, RoHS, M3		52
-	1	1	1	1	811242-5	BUMPER, HOLD DOWN		51
-	1	1	1	1	690753-2	SPACER, TONKER		50
-	-	-	-	1	18023-9	SCR, SKT HD CAP M4 X 6.0		49
-	1	1	1	1	2119656-9	APPLICATOR BASIC ASSEMBLY, SF		46
-	1	-	1	1	2119370-1	RAM, AMP STYLE, SIDE FEED		44
-	1	1	1	1	2079383-7	SCR, BHSC, RoHS (M8 X 25)		41
-	1	-	1	1	2119645-1	DISC, NUMBERED FA WIRE ADJUSTMENT		40
-	1	-	1	1	2119957-1	APPLICATOR SHIM PACK		39
-	1	1	1	1	1-2119644-3	RAM WASHER, PRECISION		38
-	1	1	1	1	2119085-1	FA HEAD, ATLANTIC STYLE		37
-	1	-	1	1	2119092-1	BOLT, ADJUSTMENT		35
-	1	1	1	1	1752356-3	SUPPORT, TERMINAL		34
-	2	2	2	2	2079383-5	SCR, BHSC, RoHS (M4 X 20)		33
-	1	1	1	1	2161328-1	HEX HEAD, FLANGED, M5 X 8mm LONG		32
-	1	1	1	1	1320908-9	SPACER, STRIP GUIDE		30
-	1	1	1	1	2119959-1	ASSEMBLY, STRIP GUIDE		29
-	1	1	1	1	455888-3	SPACER, CRIMPER		28
-	1	1	1	1	1320928-4	STRIP GUIDE		24
-	1	1	1	1	2168083-2	SCR, SKT HD CAP, RoHS, M4 X 8.0		21
-	2	2	2	2	1-18028-2	WASHER, FLAT, REG M4		20
-	1	1	1	1	2119533-1	STRIPPER, SIDE FEED		19
-	1	1	1	1	2119806-1	INSERT, SHEAR		13
-	1	1	1	1	3-22280-3	SPRING, COMPRESSION		12
-	1	1	1	1	1-356885-4	STOP, SHEAR		11
-	1	1	1	1	2119805-1	SHEAR HOLDER, FRONT		10
-	1	1	1	1	318707-1	FLOATING SHEAR, FRONT		9
-	1	1	1	1	4-1633933-1	ANVIL, COMBINATION		8
-	1	1	1	1	6-240641-8	SPACER		7
-	-	-	-	-	-	-		6
-	1	1	1	1	2119757-8	DEPRESSOR, SHEAR		5
-	-	-	-	-	-	-		4
-	-	-	-	-	-	-		3
-	-	-	-	-	-	-		2
-	1	1	1	1	1	8-1633664-4	CRIMPER, WIRE	1

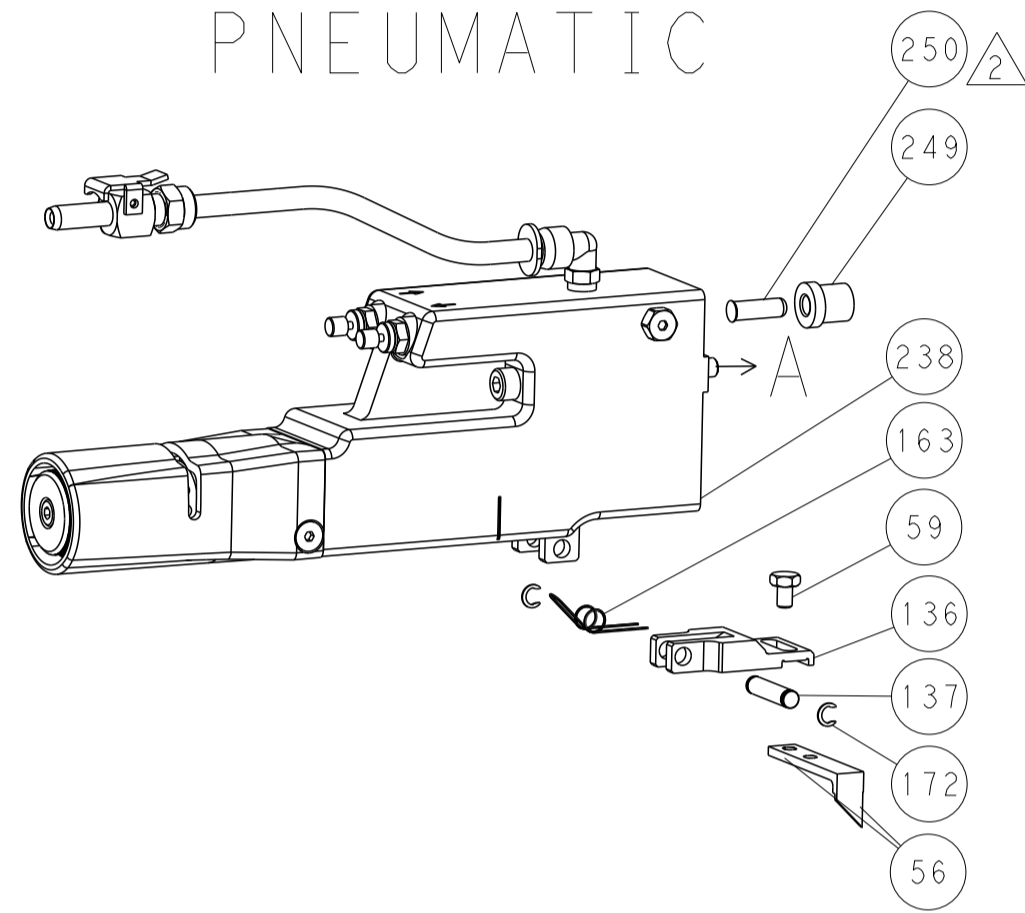
DIMENSIONS:		TOLERANCES UNLESS OTHERWISE SPECIFIED:		MATERIAL:		FINISH:		WEIGHT:		SCALE:	
mm	0 PLC ±.5	1 PLC ±0.5	2 PLC ±0.13	3 PLC ±0.013	4 PLC ±0.001	ANGLES	±.001				

Customer Accessible Production Drawing

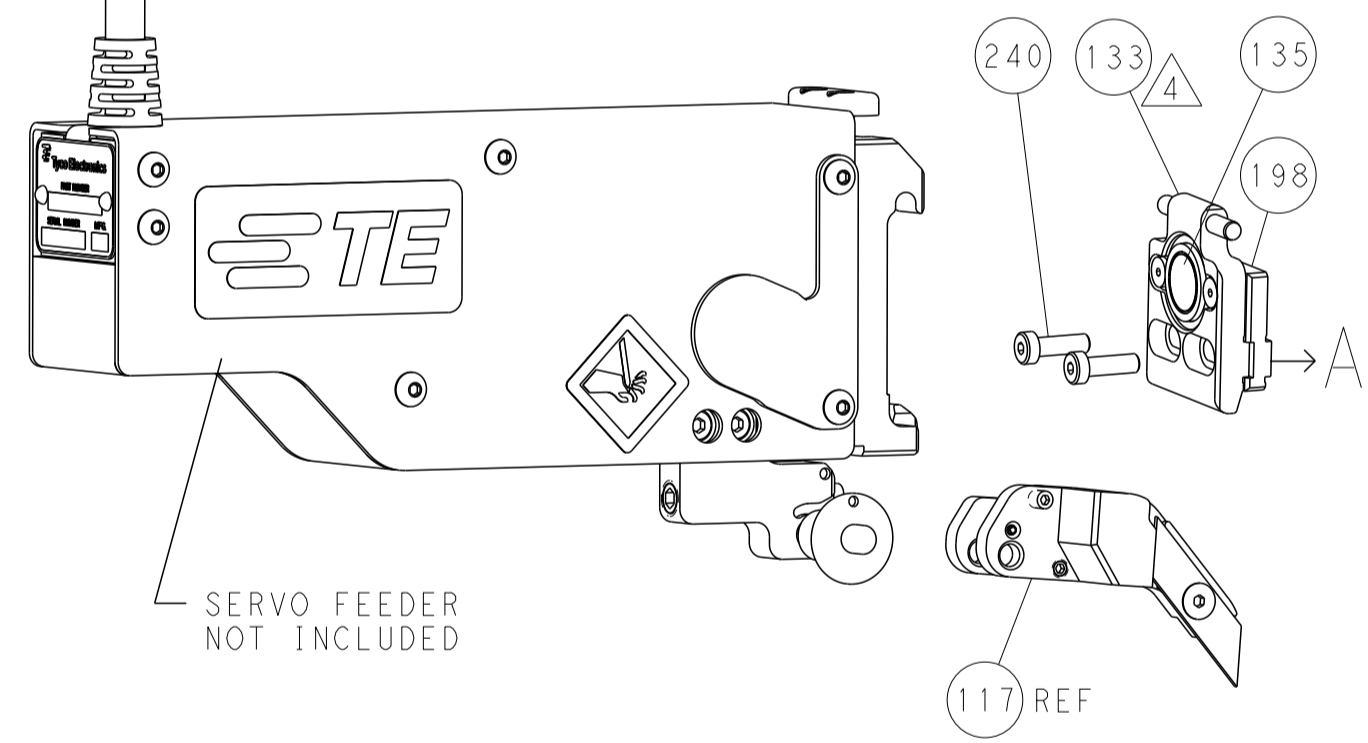
LOC		DIST		REVISIONS			
A	66	P	LTH	DESCRIPTION	DATE	OWN	APVD
-	-	-	-	SEE SHEET 1	-	-	-

FEED TYPE

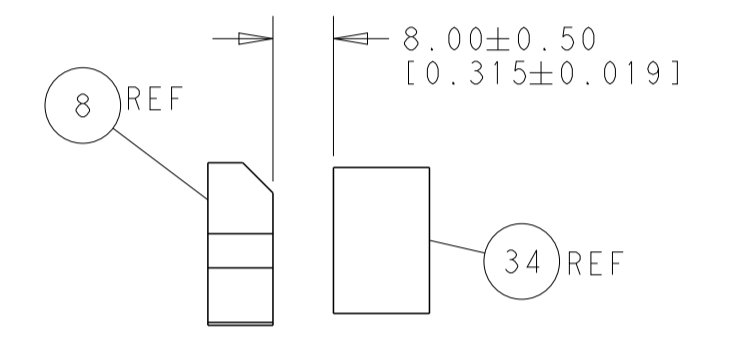
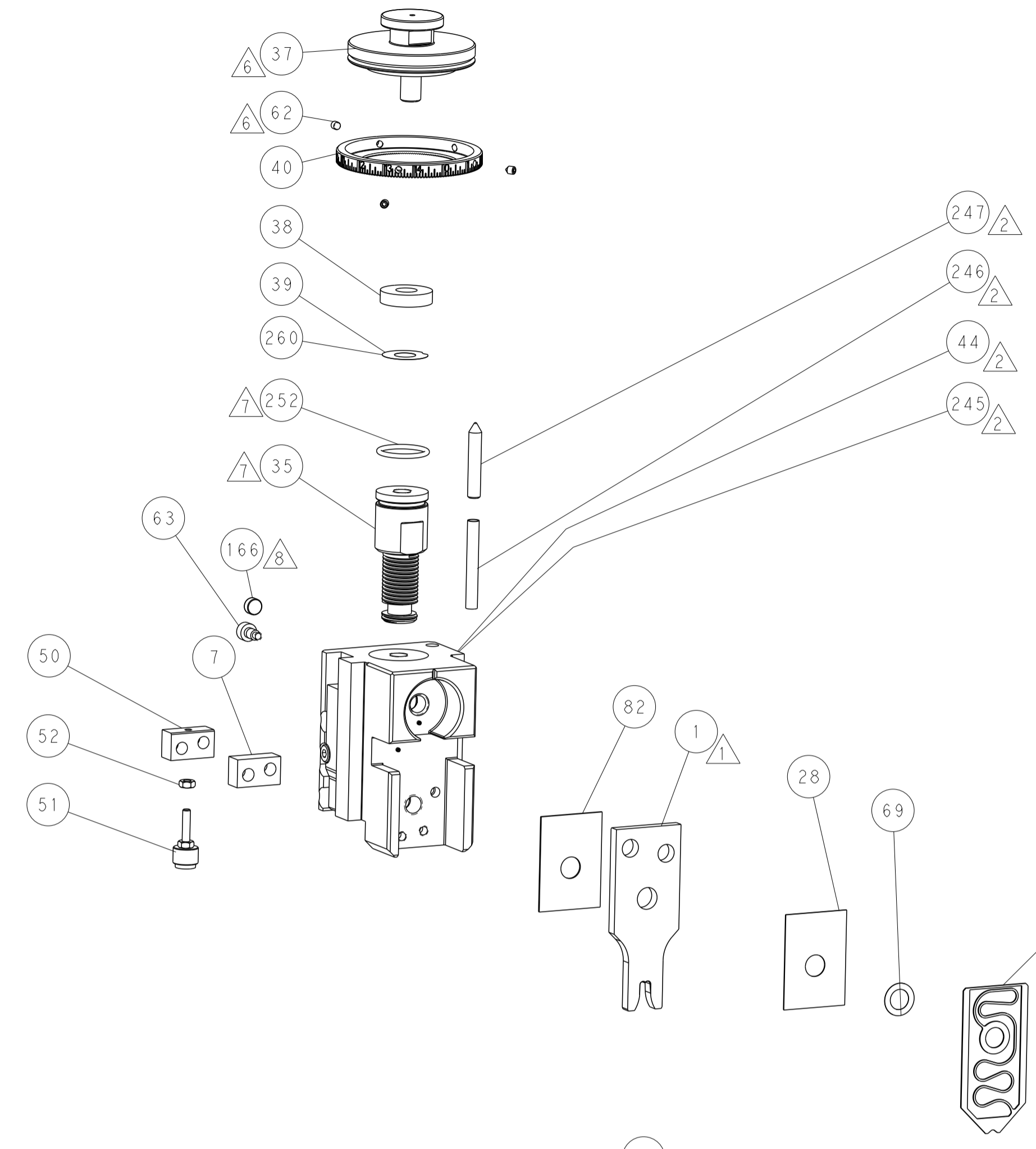
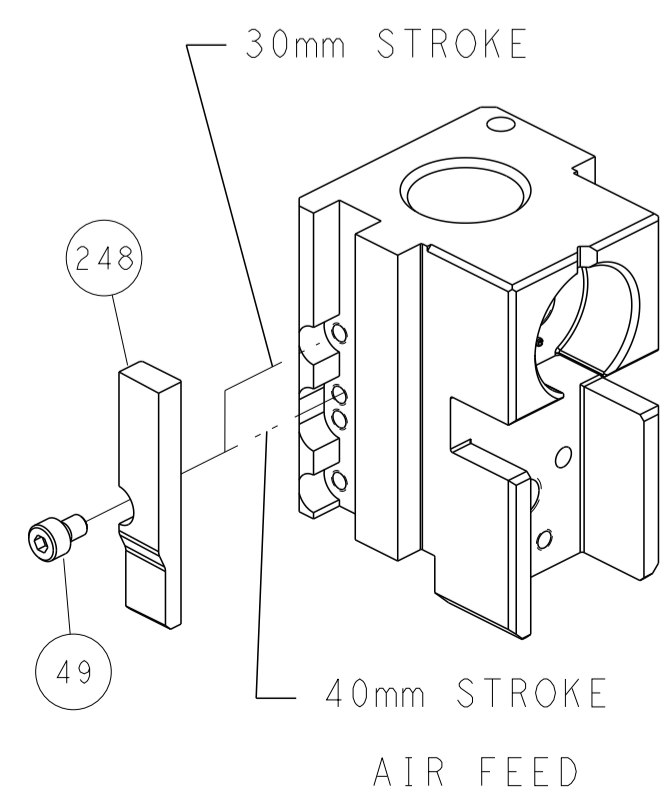
PNEUMATIC



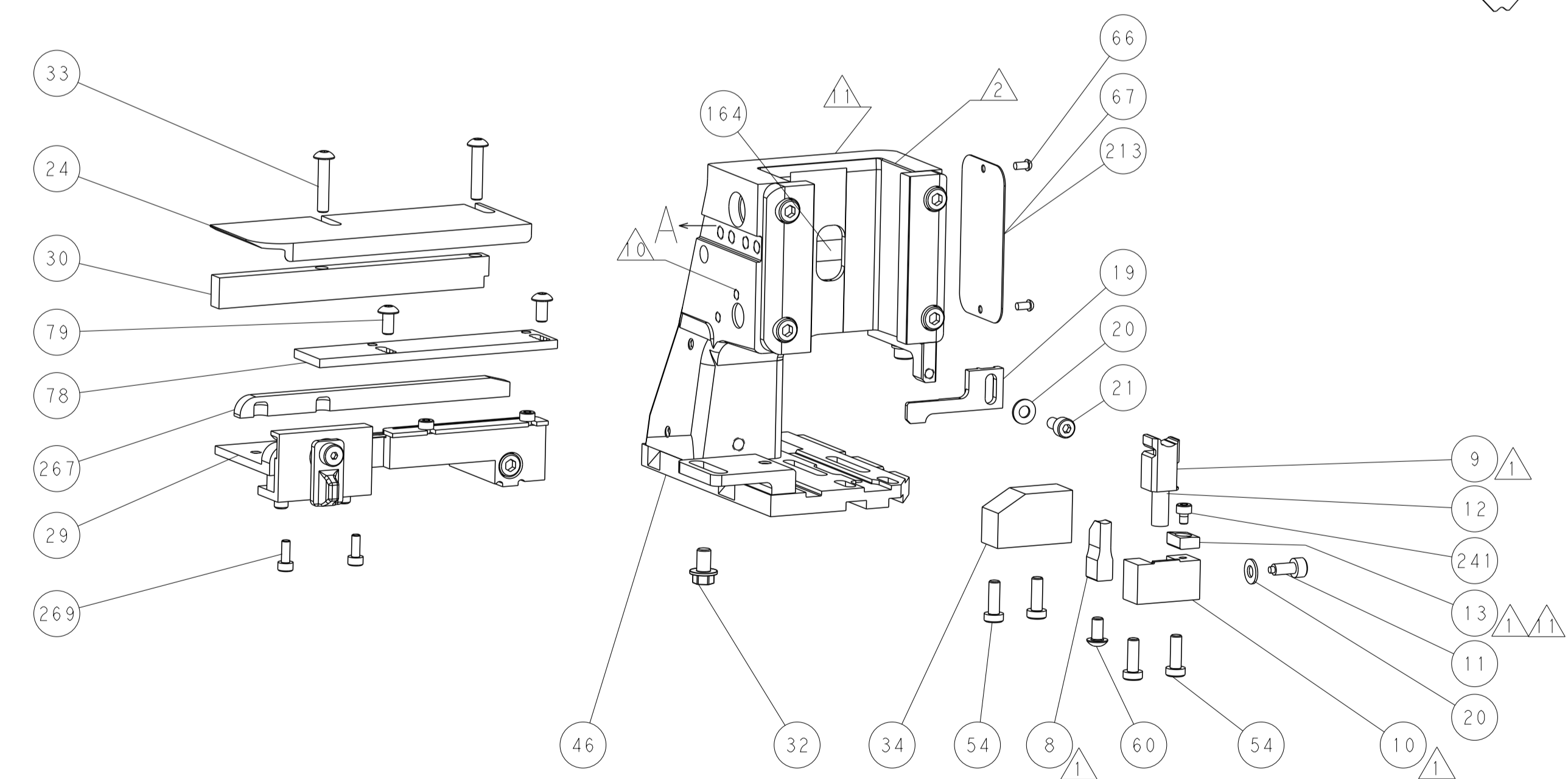
SERVO LATCH PLATE



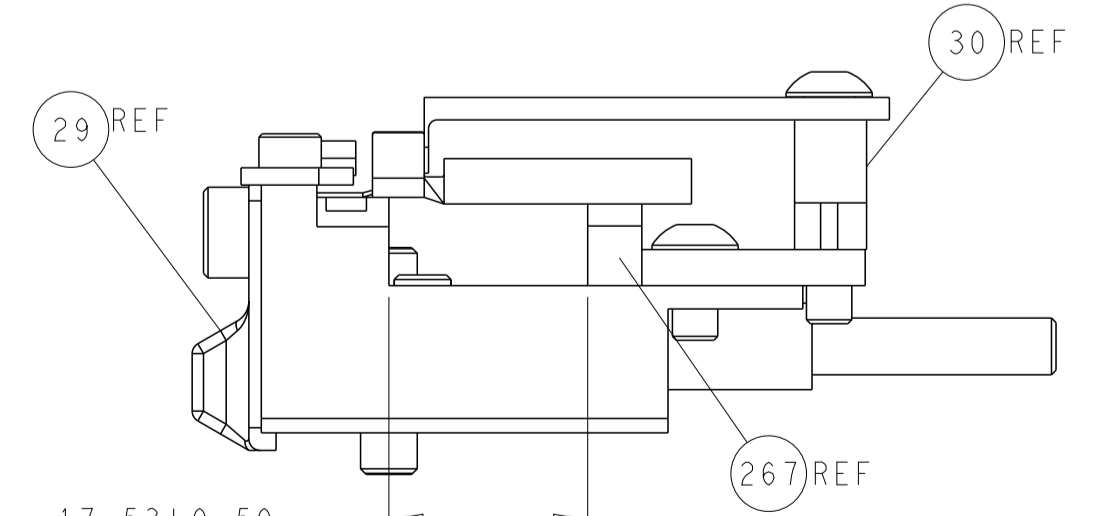
CAM POSITION



TERMINAL SUPPORT LOCATION



ITEM 30 LOCATED AT FRONT HOLES



FEED TRACK POSITION GUIDE BY WIRE BARREL

ATLANTIC VERSION
 Shown on sheets 1 of 4 & 2 of 4
 (Pacific version shown on sheets 3 of 4 & 4 of 4)

DIMENSIONS:		TOLERANCES UNLESS OTHERWISE SPECIFIED:		OWN: HOFFNER 22JAN2015		TE Connectivity	
mm	0 PLC ±0.5	1 PLC ±0.5	2 PLC ±0.13	3 PLC ±0.013	4 PLC ±0.0001	APVD: T. ELBIN 23JAN2015	Harrisburg, PA 17105-3608
MATERIAL:		FINISH:		NAME: Ocean Side Feed Applicator		RESTRICTED TO:	
Customer Accessible Production Drawing		SCALE: 1:2		SHEET 2 OF 4		REV A	

PACIFIC VERSION TERMINATOR INTERFACE ADAPTER	PART NUMBER	REVISION	DESCRIPTION	FEED TYPE
	2-2266665-2	A	FINE CRIMP HEIGHT ADJUST	PNEUMATIC
	2-2266665-5	A	FINE CRIMP HEIGHT ADJUST	SERVO LATCH PLATE ⁴
	2-2266665-7	A	FINE CRIMP HEIGHT ADJUST	NONE
	7-2266665-7	A	CRIMP TOOLING KIT	-

APPLICATOR DATA		
CRIMP WIRE	SIZE	TYPE
INSUL	4.42 mm [1.741]	F
APPLICATOR INSTRUCTIONS 408-10389		

TERMINAL DATA: AMPHENOL TERMINAL AMPHENOL CRIMP SPECIFICATION			
TERMINAL NAME: AMPHENOL H4 CONTACT			
WIRE STRIP LENGTH		INSULATION DIAMETER RANGE	
4.56-4.95 mm [1.80-.195 IN]		3.18 mm [1.125 IN] MAX	
TERMINAL APPLICATION SPECIFICATION	H4 CONTACT Rev -		
TERMINALS APPLIED ¹⁰			
TE TERMINAL	AMPHENOL TERMINAL	TE TERMINAL	AMPHENOL TERMINAL
2113652-1	H4FF4R	2113652-2	H4FM4R

WIRE SIZE	CRIMP HEIGHT mm [INCH]	CRIMP HEIGHT REFERENCE SETTING ⁹
6.00mm2	2.42 +/- 0.05 [1.095 +/- .002]	5.6
4.00mm2	2.30 +/- 0.05 [1.091 +/- .002]	6.4



- ¹ RECOMMENDED SPARE PARTS
- ² GREASE BEARING SURFACES LIGHTLY
- 3. LUBRICATE DAILY PER THE APPLICATOR INSTRUCTION SHEET SUPPLIED WITH THE APPLICATOR.
- ⁴ APPLICATOR SPECIFIC DATA TO BE ENTERED INTO BLANK MEMORY CHIP AT ASSEMBLY. SEE BELOW FOR PART NUMBER:
PNEUMATIC FEED WITH "SMART APPLICATOR" CONVERSION: 8-2266665-4
SERVO FEED WITH "FINE CRIMP HEIGHT ADJUST": 8-2266665-5
- 5. ADJUSTMENT OF THE STRIPPER MAY BE REQUIRED WHEN MOVING THE APPLICATOR BETWEEN BENCH AND LEADMAKER APPLICATIONS.
- ⁶ APPLY PART NUMBER 1-23419-5 LOCTITE TO THREADS OF ITEM 62.
- ⁷ GREASE THREADS, GROOVE AND O-RING ON ITEMS 139 & 152.
- ⁸ MAGNET MUST BE ORIENTED CORRECTLY IN ORDER TO PROPERLY ACTUATE THE COUNTER.
- ⁹ CRIMP HEIGHT REFERENCE SETTING WAS THE SETTING USED WHEN THE APPLICATOR WAS QUALIFIED AT THE FACTORY. ADJUSTMENT MAY BE NECESSARY WHEN RUNNING APPLICATOR IN THE FIELD.
- ¹⁰ TERMINAL PITCH NOT COMPATIBLE WITH MECHANICAL FEED.
- ¹¹ TO CONVERT THE APPLICATOR TO A NON-CARRIER CUTTING STYLE, REMOVE ITEM 13 AND ATTACH TO THE LOCATION ON BACK SIDE OF THE HOUSING. REFER TO INSTRUCTION SHEET FOR ADDITIONAL INFORMATION.
- ¹² CUT TO LENGTH AT ASSEMBLY.

APPLICATOR STYLE CONVERSION CHART						
CONVERT TO	PART NUMBERS REQUIRED					
-	-	-	-	-	-	-
SERVO LATCH PLATE	2119951-1	-	8-2266665-5	1901094-3	-	2168400-6 (QUANTITY 2)
SMART APPLICATOR	2161326-1	-	8-2266665-4	-	-	-
PNEUMATIC FEED	2119950-1	1338685-1	5-18022-5	2119641-2	2119799-1	2063440-1

***WARNING**
ON INSTALLATION, SET WIRE X DISC, ITEM 40 TO LARGEST WIRE SIZE SETTING. USE OF SETTINGS BELOW MINIMUM REQUIRED CRIMP HEIGHT SETTING WILL CAUSE DAMAGE TO CRIMP TOOLING.

PACIFIC VERSION
Shown on sheets 3 of 4 & 4 of 4
(Atlantic version shown on sheets 1 of 4 & 2 of 4)

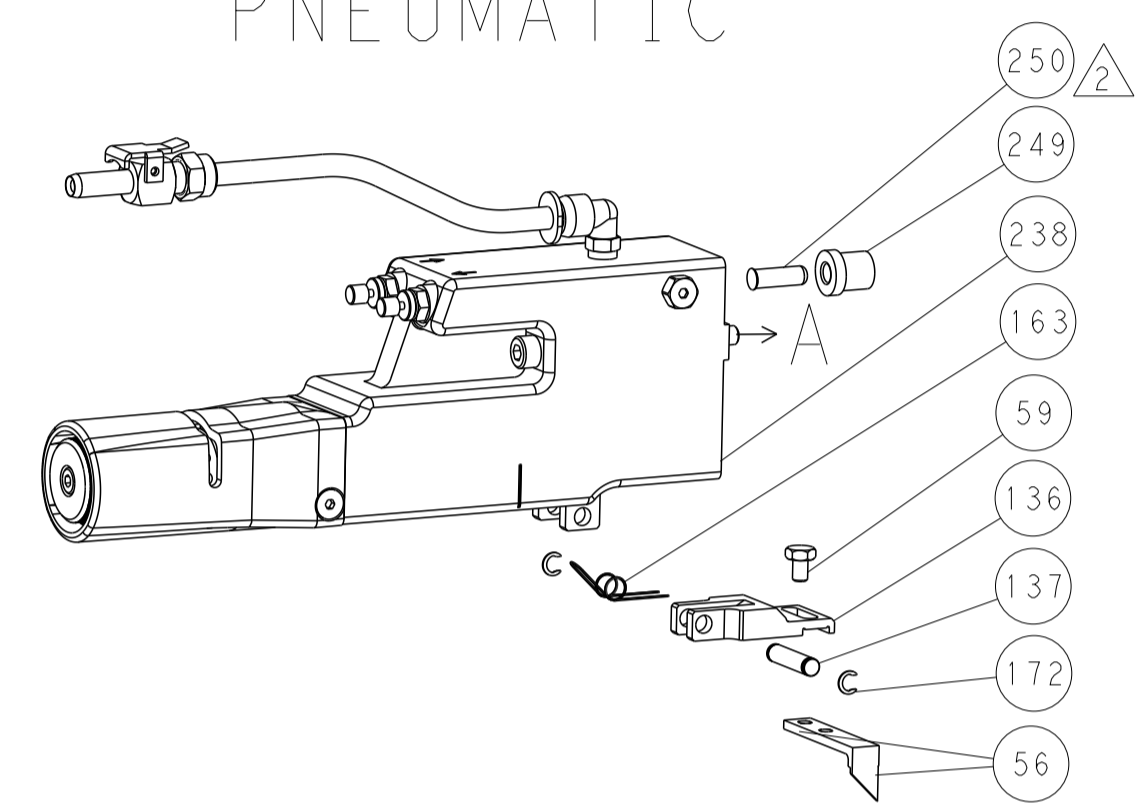
SET UP GAUGE	LOC	DIST	REVISIONS			
2119599-1	A	66	REV	DATE	BY	APPV
-	-	-	SEE SHEET 1	-	-	-

-	2	2	2	2168083-1	SCR, SKT HD CAP, RoHS, M3 X 8.0	269	
-	1	1	1	1-1633782-1	FENCE	267	
-	1	1	1	2119782-1	FINE ADJUST HEAD ASM, PACIFIC STYLE	251	
-	-	-	1	2119640-1	PUSH ROD, AIR FEED	250	
-	-	-	1	2079988-1	BUSHING, LCH5-12, MISUMI	249	
-	1	1	1	1-22279-3	SPRING, COMPRESSION	246	
-	1	1	1	7-18023-7	SCR, SKT HD CAP M3 X 4.0	241	
-	-	2	-	2168400-6	SHCS, LOW HEAD, RoHS, M5 X 16	240	
-	-	-	1	2063440-1	AIR FEED MODULE	238	
-	-	1	-	2119740-2	TAG, IDENTIFICATION	213	
-	-	1	-	1901094-3	SPACER, FEEDER	198	
-	-	-	2	21045-3	RING, RETAIN, EXTERN, 3/16 CRESCENT	172	
-	1	1	1	994969-1	MAGNET, RARE EARTH HIGH ENERGY	166	
-	REF	REF	REF	994970-2	COUNTER, MAGNETIC	164	
-	-	-	1	240638-1	SPRING, FEED FINGER	163	
-	1	1	1	8-21084-1	O-RING, .801 ID, .070 DIA. MAT.	152	
-	-	-	1	2119641-2	FEED CAM, AIR FEED	151	
-	1	1	1	2119798-2	DETENT PIN	145	
-	1	1	1	2079383-8	SCR, BHSC, RoHS (M4 X 16)	144	
-	4	4	4	2168400-5	SHCS, LOW HEAD, RoHS, M4 X 20	143	
-	1	1	1	1-2119656-0	APPLICATOR BASIC ASSEMBLY, SF	141	
-	1	1	1	2119650-1	RAM, ASIAN STYLE, SIDE FEED	140	
-	1	1	1	2119092-2	BOLT, ADJUSTMENT	139	
-	-	-	1	3-23627-7	PIN, RETAIN, GRVD, 3/16 X .854	137	
-	-	-	1	2119799-1	HOLDER, FEED FINGER, AF	136	
-	-	REF	-	SEE NOTE 4	MEMORY CHIP, PROGRAMMED	135	
-	-	1	-	1633743-1	SERVO FEED LATCH ASM	133	
-	-	REF	-	2119944-1	FEED FINGER ASSEMBLY, SF	117	
-	1	1	1	455888-5	SPACER, CRIMPER	82	
-	2	2	2	2079383-4	SCR, BHSC, RoHS (M4 X 8)	79	
-	1	1	1	1803096-1	EXTENSION PLATE	78	
-	1	1	1	2119956-1	DOCUMENTATION PACKAGE	71	
-	1	1	1	2119791-9	DEPRESSOR, WIRE	70	
-	1	1	1	2119943-1	WASHER, SPACER	69	
-	1	-	1	2119740-1	TAG, IDENTIFICATION	67	
-	2	2	2	2168078-1	SCREW, DRIVE, RH, RoHS, 2 x .188	66	
-	1	1	1	2119793-1	LIMITER, ADJUSTMENT BOLT	63	
-	3	3	3	992763-5	SCR, SET, SOC, CONE POINT, M3 x 4.0	62	
-	-	-	1	5-18022-5	SCR, HEX HD CAP, M4 X 6.0	59	
-	-	-	1	1338685-1	PAWL, FEED	56	
-	2	2	2	2168083-9	SCR, SKT HD CAP, RoHS, M4 X 20	53	
-	1	1	1	5018030-1	NUT, HEX, REG, RoHS, M3	52	
-	1	1	1	811242-5	BUMPER, HOLD DOWN	51	
-	1	1	1	690753-2	SPACER, TONKER	50	
-	-	-	1	18023-9	SCR, SKT HD CAP M4 X 6.0	49	
-	1	1	1	2079383-7	SCR, BHSC, RoHS (M8 X 25)	41	
-	1	1	1	2119645-1	DISC, NUMBERED FA WIRE ADJUSTMENT	40	
-	1	1	1	2119957-1	APPLICATOR SHIM PACK	39	
-	1	1	1	1-2119644-3	RAM WASHER, PRECISION	38	
-	1	1	1	1752356-3	SUPPORT, TERMINAL	34	
-	2	2	2	2079383-5	SCR, BHSC, RoHS (M4 X 20)	33	
-	1	1	1	2161328-1	HEX HEAD, FLANGED, M5 x 8mm LONG	32	
-	1	1	1	1320908-9	SPACER, STRIP GUIDE	30	
-	1	1	1	2119959-1	ASSEMBLY, STRIP GUIDE	29	
-	1	1	1	455888-3	SPACER, CRIMPER	28	
-	1	1	1	1320928-4	STRIP GUIDE	24	
-	1	1	1	2168083-2	SCR, SKT HD CAP, RoHS, M4 X 8.0	21	
-	2	2	2	1-18028-2	WASHER, FLAT, REG M4	20	
-	1	1	1	2119533-1	STRIPPER, SIDE FEED	19	
-	1	1	1	2119806-1	INSERT, SHEAR	13	
-	1	1	1	3-22280-3	SPRING, COMPRESSION	12	
-	1	1	1	1-356885-4	STOP, SHEAR	11	
-	1	1	1	2119805-1	SHEAR HOLDER, FRONT	10	
-	1	1	1	318707-1	FLOATING SHEAR, FRONT	9	
-	1	1	1	4-1633933-1	ANVIL, COMBINATION	8	
-	1	1	1	6-240641-8	SPACER	7	
-	-	-	-	-	-	6	
-	1	1	1	2119757-8	DEPRESSOR, SHEAR	5	
-	-	-	-	-	-	4	
-	-	-	-	-	-	3	
-	-	-	-	-	-	2	
-	1	1	1	1	8-1633664-4	CRIMPER, WIRE	1

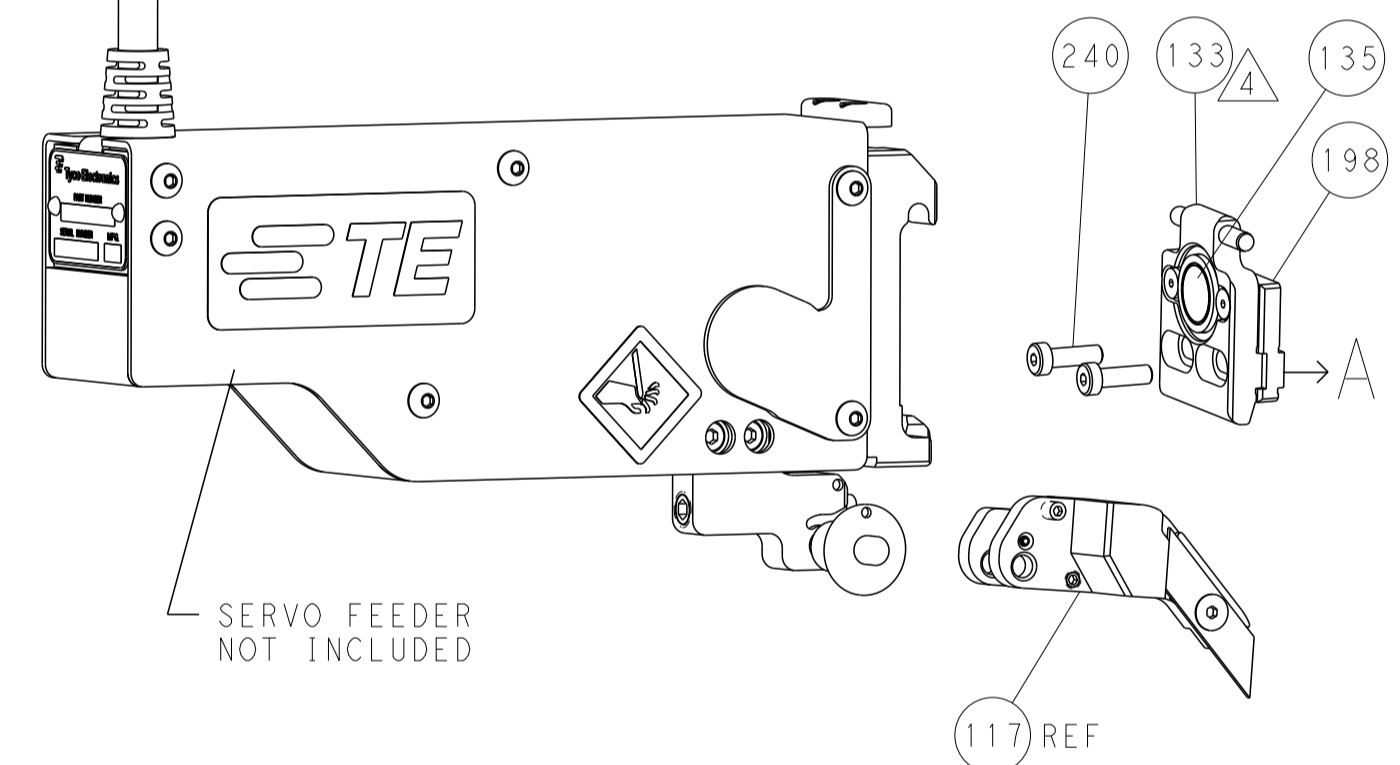
DIMENSIONS:	TOLERANCES UNLESS OTHERWISE SPECIFIED:	OWN	DATE	DESCRIPTION	ITEM NO
mm	0 PLC ±.5 1 PLC ±0.5 2 PLC ±0.13 3 PLC ±0.013 4 PLC ±0.001 ANGLES ±.1	HOFFNER	22JAN2015	TE Connectivity	
		CHS	23JAN2015	Harrisburg, PA 17105-3608	
		T. ELBIN			
		APVD	23JAN2015		
		T. ELBIN			
		PRODUCT SPEC			
		APPLICATION SPEC			
		FINISH			
		WEIGHT			
		MATERIAL			
		SCALE	1:2		
		SHEET	3	OF	4
		REV	A		

LOC		DIST		REVISIONS			
A	66	P	LTM	DESCRIPTION	DATE	OWN	APVD
		-		SEE SHEET 1			

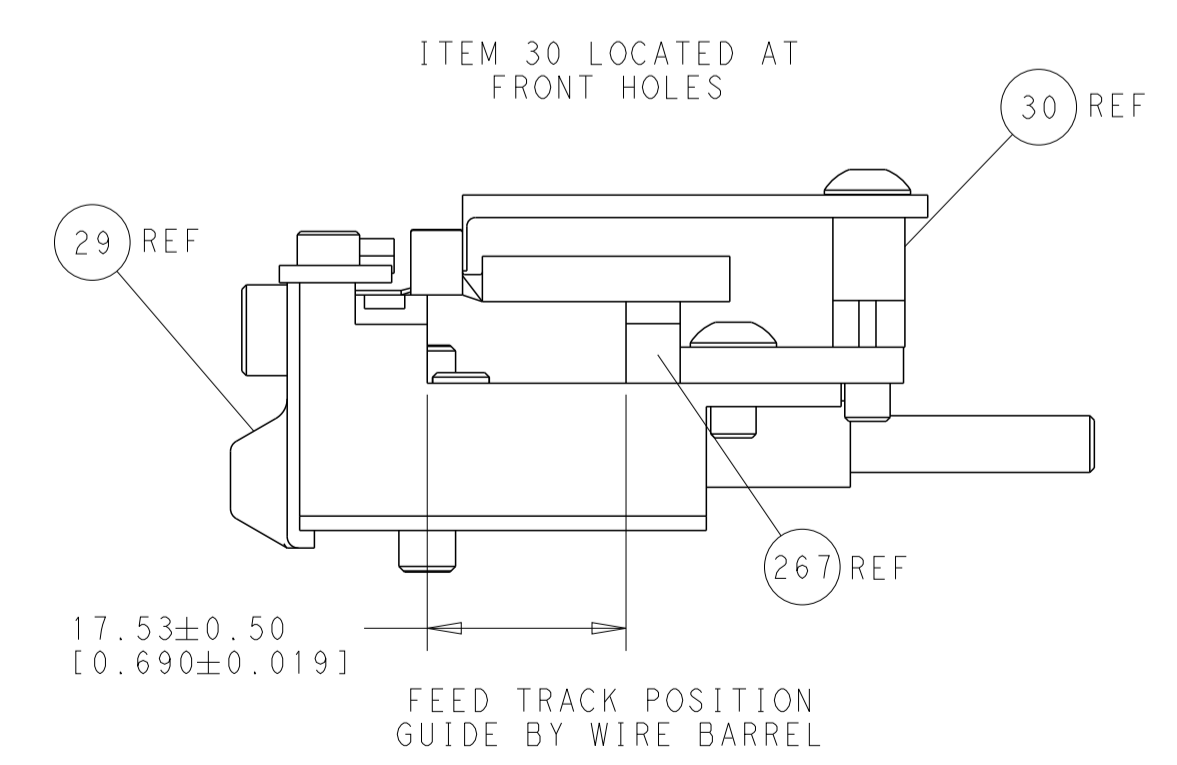
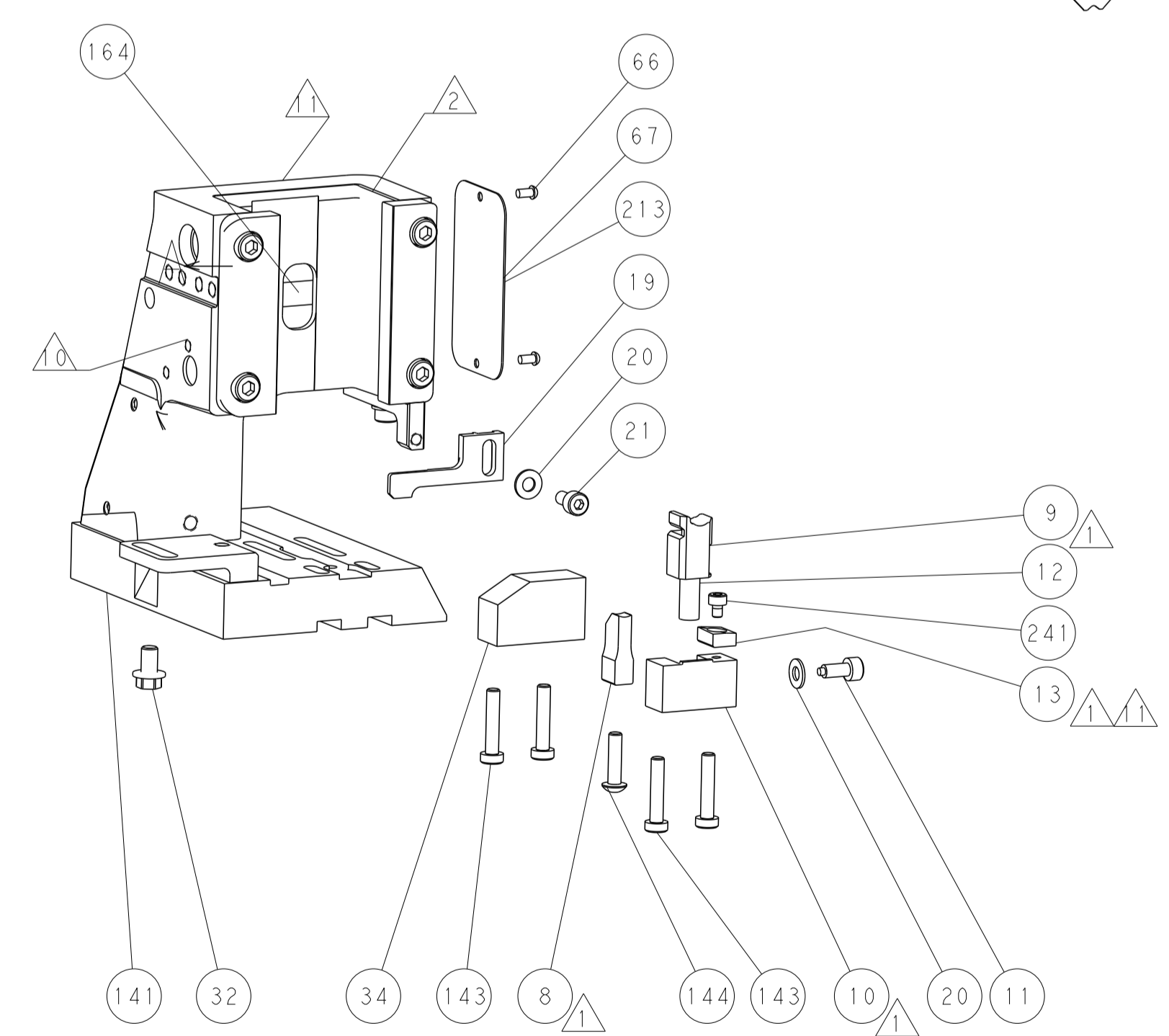
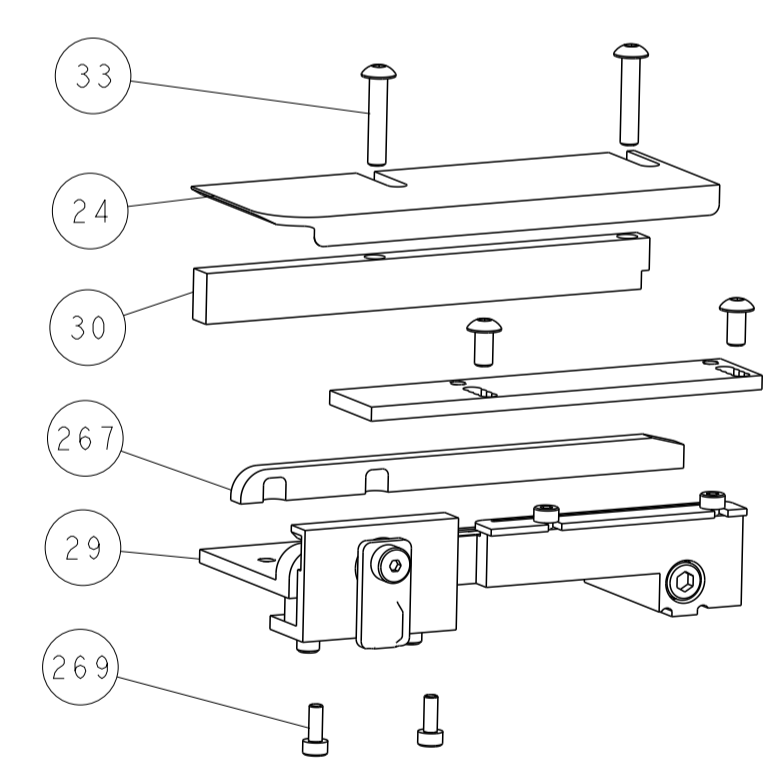
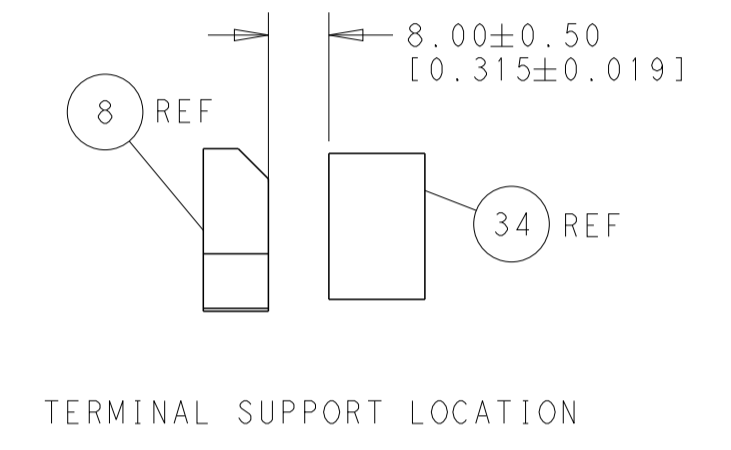
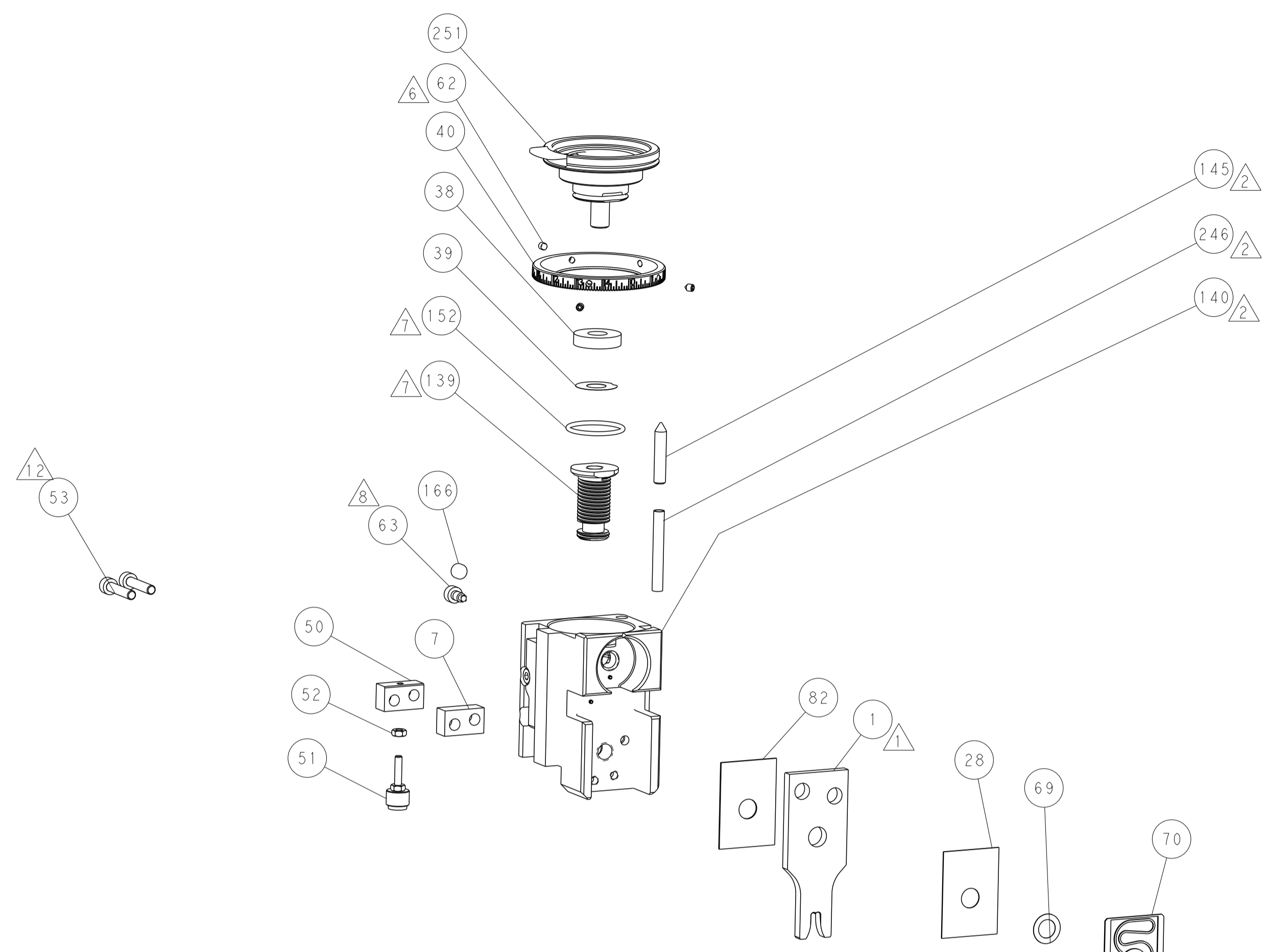
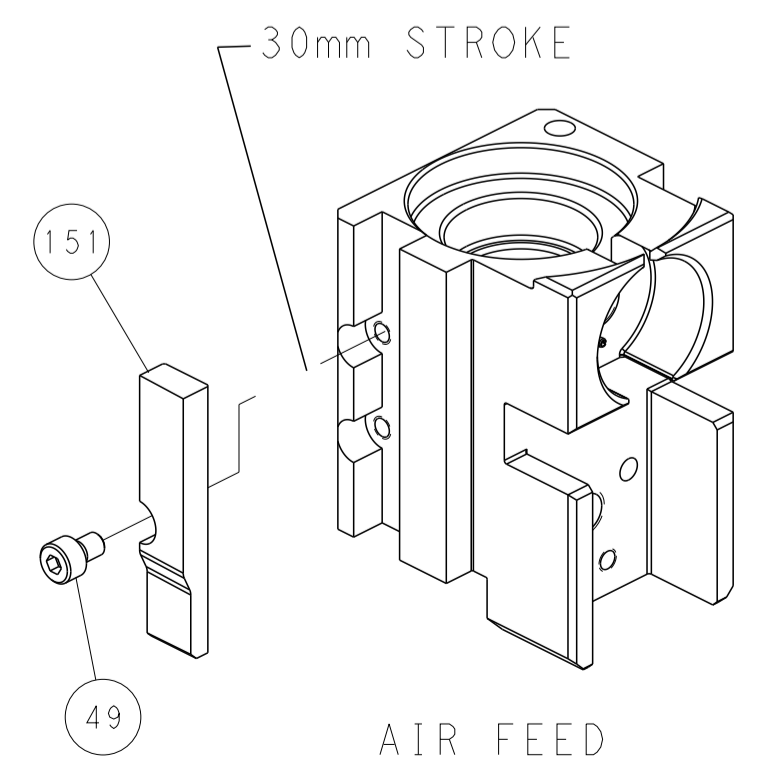
FEED TYPE PNEUMATIC



SERVO LATCH PLATE



CAM POSITION



PACIFIC VERSION
 Shown on sheets 3 of 4 & 4 of 4
 (Atlantic version shown on sheets 1 of 4 & 2 of 4)

<small>THIS DRAWING IS UNPUBLISHED. RELEASED FOR PUBLICATION. COPYRIGHT 20 BY TYCO ELECTRONICS CORPORATION. ALL RIGHTS RESERVED.</small>		DWN: HOFFNER 22JAN2015 CHK: T. ELBIN 23JAN2015 APVD: T. ELBIN 23JAN2015	TE Connectivity Harrisburg, PA 17105-3608
DIMENSIONS: mm TOLERANCES UNLESS OTHERWISE SPECIFIED: 0 PLC ±0.5 1 PLC ±0.5 2 PLC ±0.13 3 PLC ±0.013 4 PLC ±0.001 ANGLES ±0.0001 FINISH:		NAME: Ocean Side Feed Applicator PRODUCT SPEC: APPLICATION SPEC: WEIGHT:	SIZE: A1 CAGE CODE: 00779 DRAWING NO: C=2266665 RESTRICTED TO:
MATERIAL:		SCALE: 1:2 SHEET: 4 of 4 REV: A	Customer Accessible Production Drawing