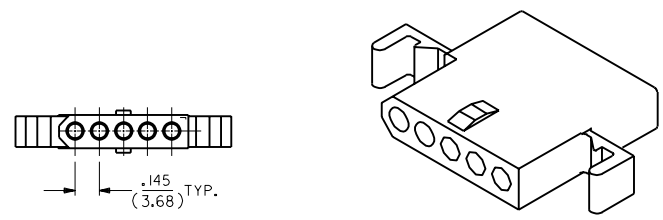
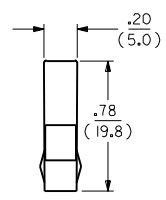
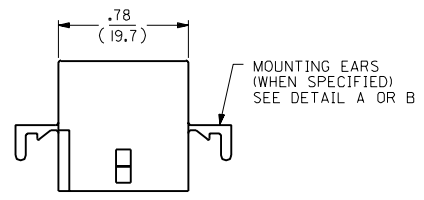
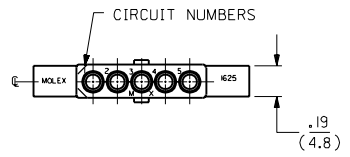
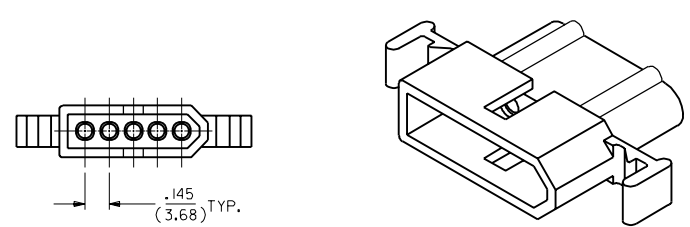
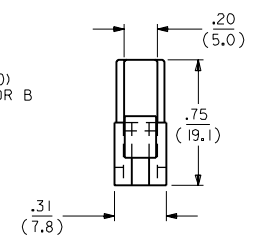
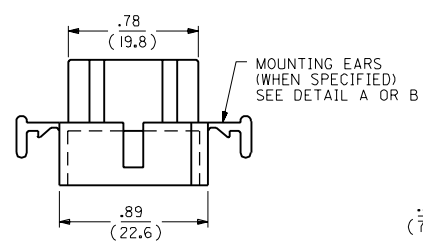
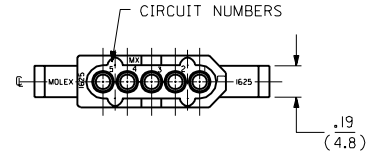


RECEPTACLE



RECEPTACLE HOUSING  
SHOWN WITH STANDARD EARS

PLUG



PLUG HOUSING  
SHOWN WITH STANDARD EARS

F	2	F	F	REVISED & REDRAWN
F	1	F	F	EGR * US 1981
MFG.	SH.	REV.	LTR.	KBW 01-26-89 RW
				REVISIONS

DIMENSIONS SHOWN METRIC (INCH)		TITLE	
UNLESS OTHERWISE SPECIFIED TOLERANCES: ANGULAR ± .040°		.062/(1.57) HOUSINGS PLUG & RECEPTACLE 5 CIRCUIT ± .145/(3.68)C	
3 PLACE ± .010	---		SHEET NO. 1 OF 2 DATE 01/26/89
2 PLACE ± .014	± 0.25		MOLEX INCORPORATED LITTLE ROCK, AR 60532 U.S.A.
1 PLACE ---	± 0.35		
DRAFT WHERE APPLICABLE MUST REMAIN WITHIN DIMENSIONS		PART NO. SEE CHART DRWG. NO. SD-1625-5	
DRWG. BY KBW	CHKD. BY RW	FILE NAME SD1625SX1	DIV. CP
APP'D. RAS	SCALE 2:	THIS DRAWING CONTAINS INFORMATION THAT IS PROPRIETARY TO MOLEX INC. AND SHOULD NOT BE USED WITHOUT WRITTEN PERMISSION.	

13 12 11 10 9 8 7 6 5 4 3 2 1

PLUG		RECEPTACLE	
PART NO.	ENG. NO.	PART NO.	ENG. NO.
03-06-2054	I625-5P	03-06-1055	I625-5R
03-06-2055	I625-5P1	03-06-1056	I625-5R1
03-06-7054	I625-5PBK	03-06-6055	I625-5RBK
03-06-7055	I625-5P1BK	NOT TOOLED	I625-5R2

**LEGEND:**

I625-5\*\*\*\*

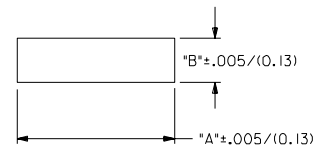
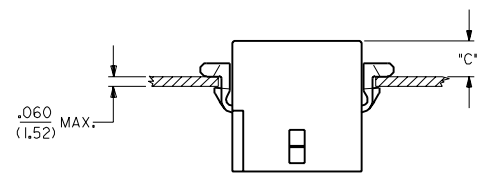
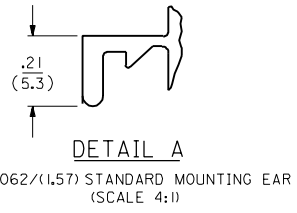
CIRCUIT SIZE

P = PLUG  
R = RECEPTACLE

BLANK = WITH STANDARD EARS  
1 = WITHOUT EARS  
2 = WITH PREBENT EARS

COLOR:

BLANK = NATURAL COLOR  
AM = AMBER BK = BLACK BU = BLUE  
BN = BROWN GY = GRAY GN = GREEN  
OR = ORANGE RD = RED YW = YELLOW

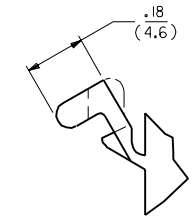
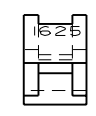


**RECOMMENDED PANEL OPENING**

HOUSING	DIM. "A"	DIM. "B"	"C" PREBENT EAR	"C" STANDARD EAR
PLUG	1.044/(26.52)	.318/(8.08)	.19/(4.8)	.18/(4.6)
RECEPT.	.940/(23.88)	.265/(6.73)	.21/(5.3)	.20/(5.1)

**NOTES:**

1. MOLEX PRODUCT SPEC 02-06 APPLIES.
2. ACCEPTS MOLEX .062 SERIES TERMINALS.
3. MATERIAL: NYLON TYPE 6/6, 94V-2.



I625

DIMENSIONS SHOWN (METRIC) INCH		UNLESS OTHERWISE SPECIFIED TOLERANCES ANGULAR ± .004		REVISIONS		DRAWING NO.		DATE	
3 PLACE	± .010	---	---	SEE SHEET 1		DRAWN BY: KBW		DATE: 01/26/89	
2 PLACE	± .01	± 0.25	---	LTR. REVISIONS		CHK'D BY: RW		SHEET NO. 2	
1 PLACE	---	± 0.35	---	LTR. REVISIONS		SCALE: 2:1		PART NO. SD-1625-5	
DRAFT WHERE APPLICABLE MUST REMAIN WITHIN DIMENSIONS				APP'D BY: RAS		FILE NAME: SD1625X2 DCR		DRAWING NO. 60532	
THIS DRAWING CONTAINS INFORMATION THAT IS PROPRIETARY TO MOLEX INC. AND SHOULD NOT BE USED WITHOUT WRITTEN PERMISSION				LITLLE, ILL. U.S.A.		MOLEX INCORPORATED		CP C	

13 12 11 10 9 8 7 6 5 4 3 2 1