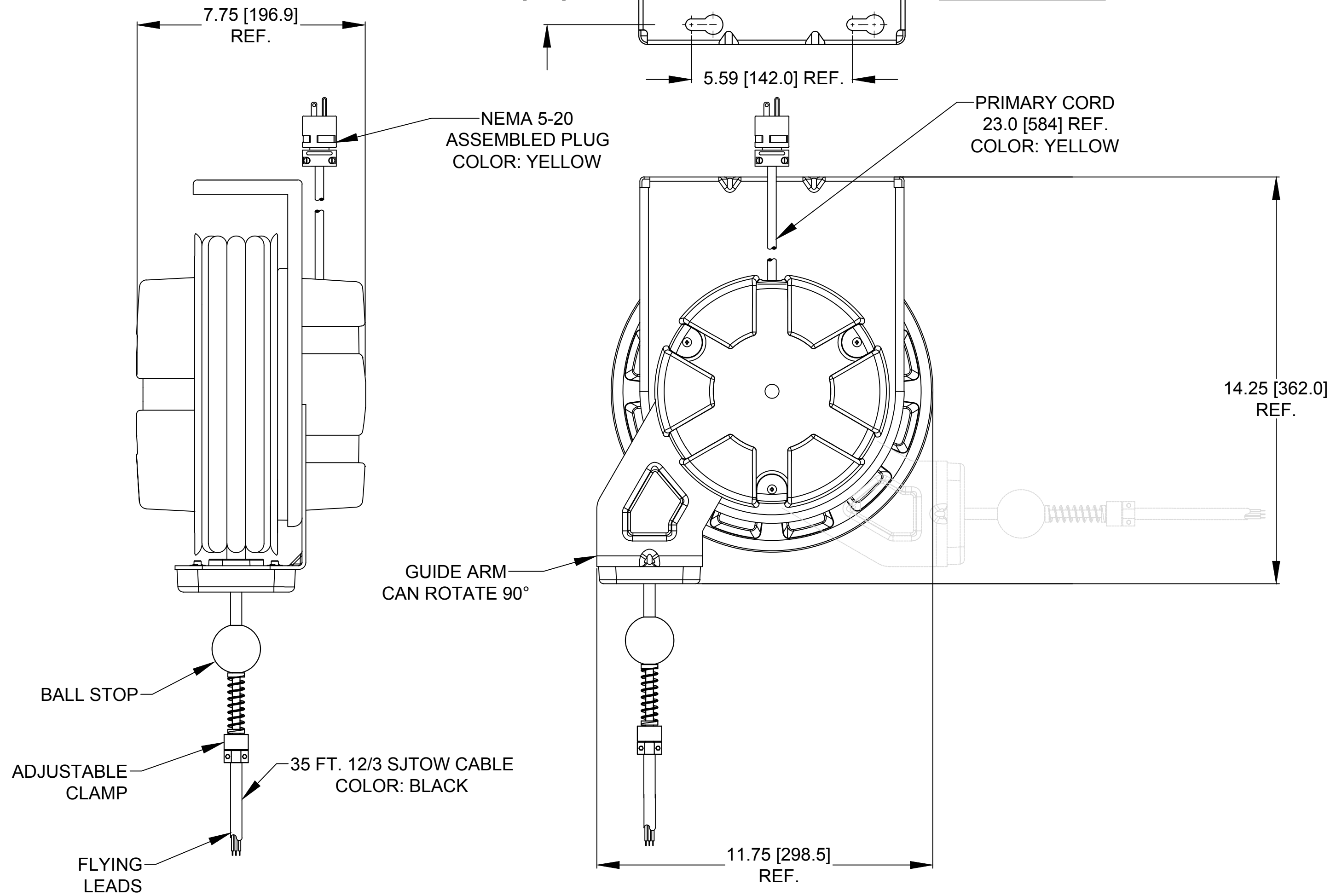




ORDER NO.	1300910202
WOODHEAD ENG. NO.	998
WIRE GAUGE	12
CONDUCTORS	3
AMPERAGE	20A
CORD LENGTH	35 FT [10.6 M]
CORD TYPE	SJTOW
CONSTRUCTION	SHEET METAL
PAINT	YELLOW POWDER COAT
REEL ENCLOSURE RATING	INDOOR
RETRACTION WEIGHT	3.0 LB [1.4 KG]



- NOTES:**
1. CABLE GUIDE IS ADJUSTABLE - DUAL POSITION
 2. RATCHET LOCK IS EASY TO DISENGAGE FOR CONSTANT TENSION.
 3. REEL CANNOT BE "LOCKED OUT" AT FULL TENSION.
 4. BALL STOP INCLUDED
 5. CSA CERTIFIED
FILE NO. LR29921 

RELEASE SALES DRAWING EC NO: IFCG2016-0112 DRWN: KCOX01 2015/07/30 CH'KD: HRUIZ01 2015/07/30 APPR: JFMURPHY 2015/09/17	QUALITY SYMBOL	GENERAL TOLERANCES (UNLESS SPECIFIED)	DIMENSION STYLE INCH/MM	SCALE NTS	DESIGN UNITS INCH	THIRD ANGLE PROJECTION
	▽=0	mm INCH	DRAWN BY DATE	TITLE	20A CORD REEL FLY-LEADS 35' #12-3 SJTOW NEMA 5-20 PLUG	
	▽C=0	4 PLACES ±--- ±---	KCOX01 2015/07/30	20A CORD REEL FLY-LEADS		
		3 PLACES ±--- ±.005	CHECKED BY DATE	 MOLEX INCORPORATED		
		2 PLACES ±.13 ±.010	HRUIZ01 2015/07/30			
	1 PLACE ±.25 ±.020	APPROVED BY DATE	MATERIAL NO.	DOCUMENT NO.	SHEET NO.	
		ANGULAR ±1/2°	JFMURPHY 2015/09/17	1300910202	SD-130091-012	1 OF 1
		DRAFT WHERE APPLICABLE MUST REMAIN WITHIN DIMENSIONS	SIZE C	THIS DRAWING CONTAINS INFORMATION THAT IS PROPRIETARY TO MOLEX INCORPORATED AND SHOULD NOT BE USED WITHOUT WRITTEN PERMISSION		