

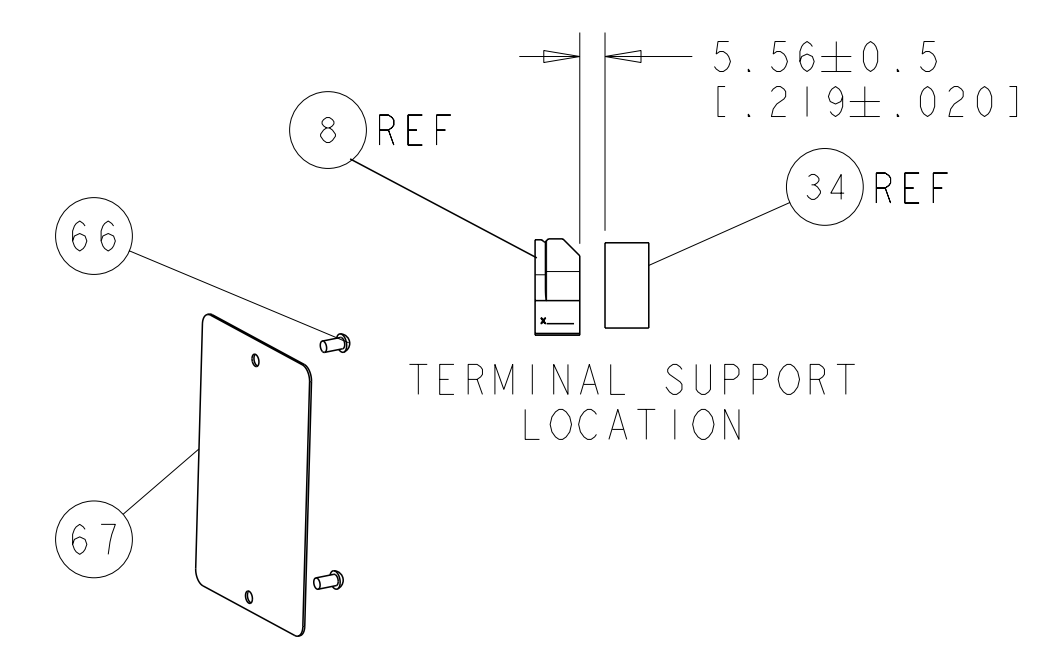
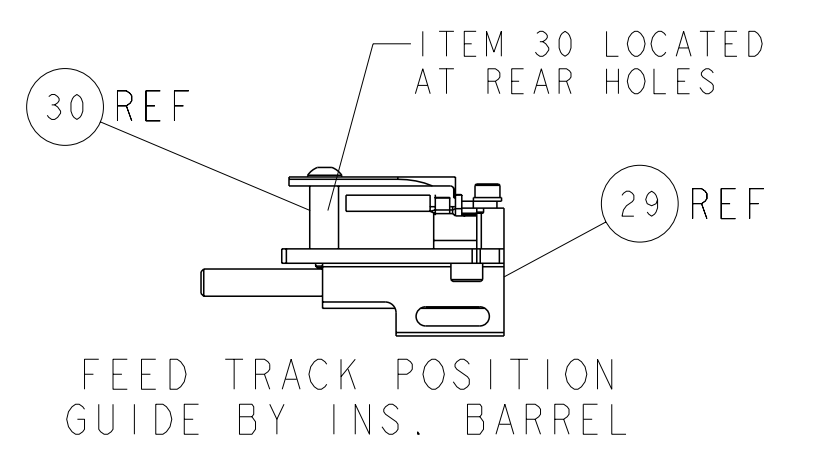
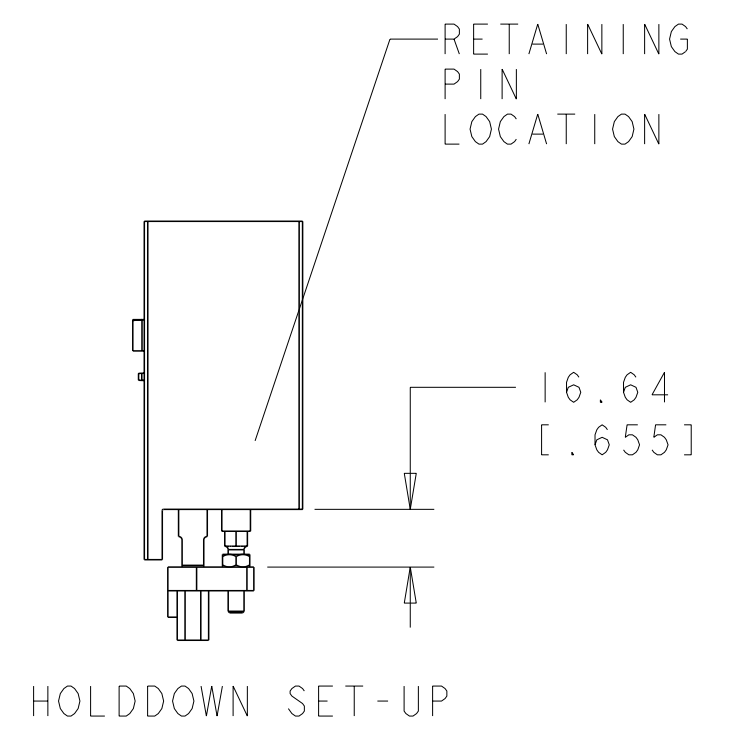
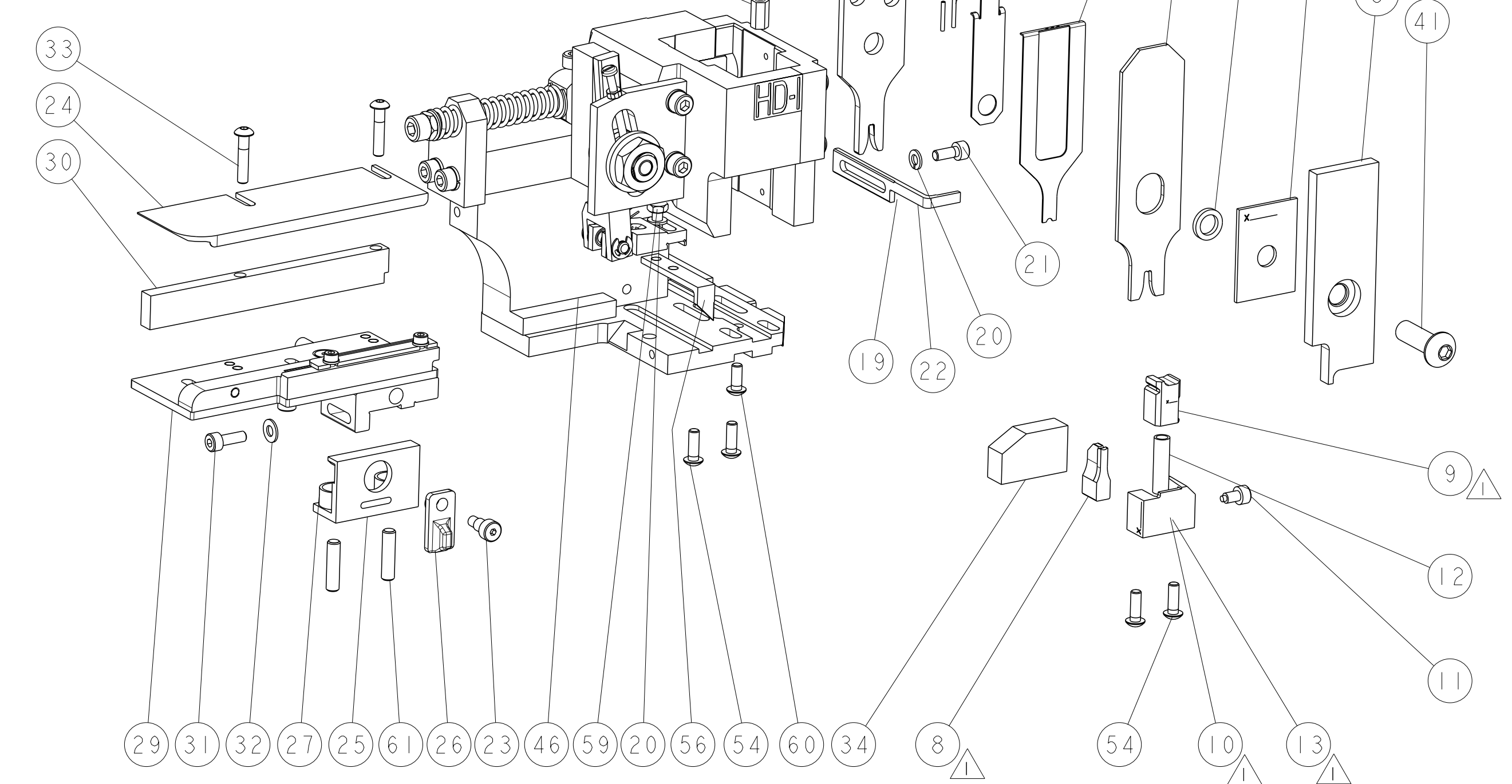
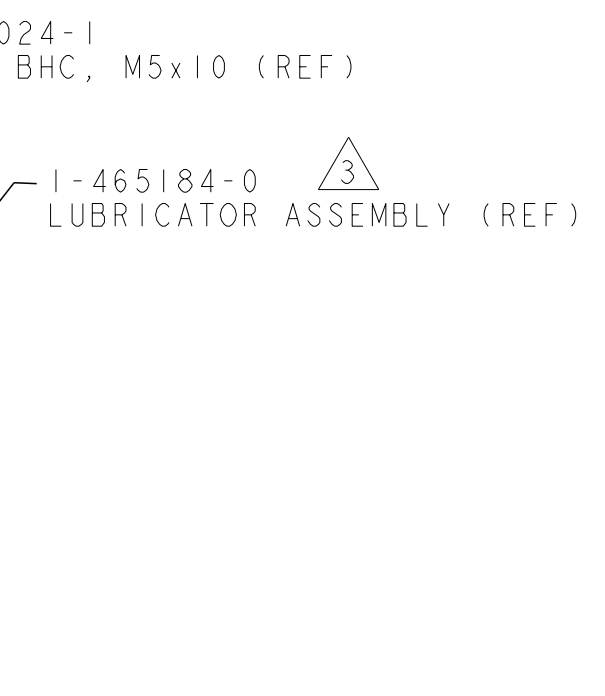
PART NUMBER	REV	TERMINATOR	FEED TYPE	DESCRIPTION
1530578-1	A	LEADMAKER	MECH POST FEED	CUTS CARRIER
1530578-2	A	BENCH	MECH PRE FEED	CUTS CARRIER
1530578-6	A	LEADMAKER	MECH POST FEED	CONTINUOUS CARRIER
7-1530578-1	A	LEADMAKER	MECH POST FEED	-1 AND SPARE PARTS
7-1530578-2	A	BENCH	MECH PRE FEED	-2 AND SPARE PARTS
7-1530578-6	A	LEADMAKER	MECH POST FEED	-6 AND SPARE PARTS
7-1530578-7	A	-	-	SPARE PARTS KIT

CRIMP	SIZE	TYPE	RANGE
WIRE	2.29 [.090 IN]	F	20-14 AWG
INSUL	3.30 [.130 IN]	F	Ø1.52 - 3.30 [.060-.130 IN]

WIRE STRIP LENGTH 3.99-4.75 [.157-.187 IN]    APPL INSTRUCTIONS 408-8322 & 408-8490

TERMINAL APPL SPEC 114-1043    FEED 12.70 [.500 IN]

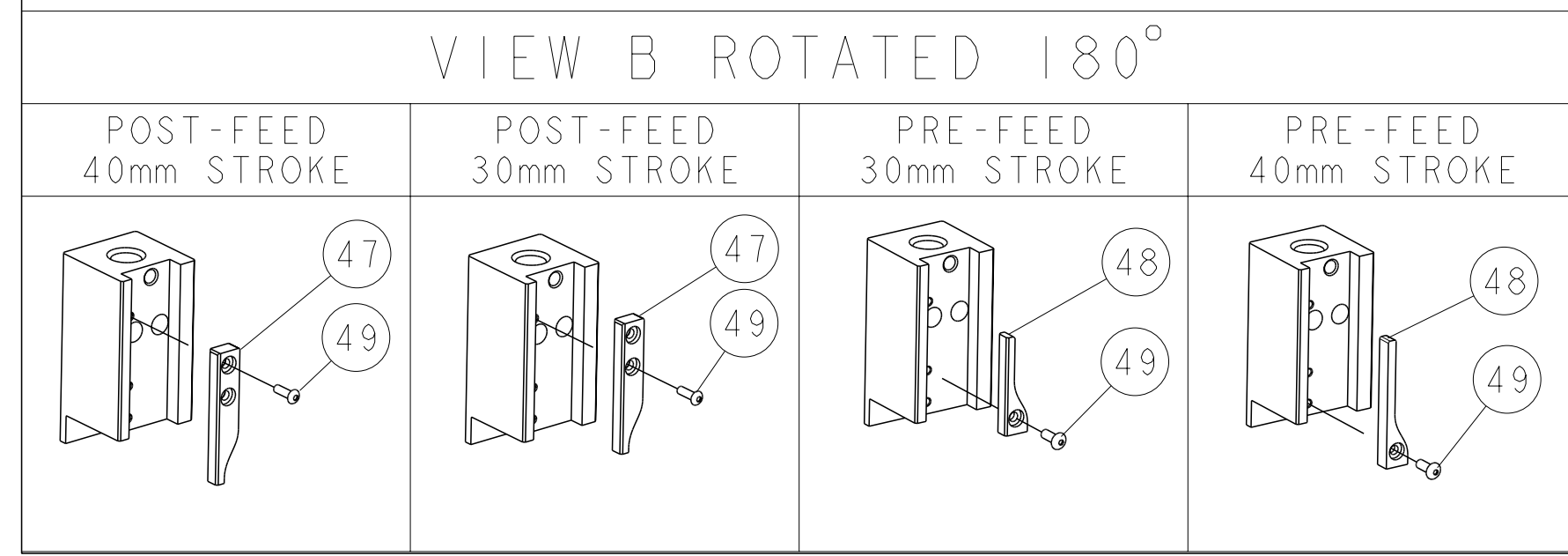
WIRE SIZE	CRIMP HEIGHT *	REF SETTING
14AWG	1.75 ±0.05 [.069 ±.002 IN]	A-9
16AWG	1.50 ±0.05 [.059 ±.002 IN]	C-7
18AWG	1.32 ±0.05 [.052 ±.002 IN]	E-0
20AWG	1.19 ±0.05 [.047 ±.002 IN]	F-0



LOC	DIST	REV	DATE	BY	APPD
A	66		12DEC2011	KS	TE

QTY	REV	DESCRIPTION	DATE	BY	APPD
-	1	993111-8			
-	2	3-22280-7			
-	1	1752353-1			
-	1	1901680-1			
-	1	1490525-3			
-	1	1338705-3			
-	2	2-23147-2			
-	1	1490524-1			
-	1	461264-5			
-	2	21017-2			
-	1	1424350-1			
-	1	3-18031-0			
-	2	2-18032-5			
-	1	18024-7			
-	1	5-18022-2			
-	1	1338685-1			
-	4	18024-8			
-	1	1-18030-0			
-	1	1901681-1			
-	1	2-1752354-8			
-	1	18024-3			
-	1	1338675-1			
-	1	1338676-1			
-	1	1320999-3			
-	1	690191-1			
-	1	1633724-1			
-	1	2-18024-6			
-	1	690125-1			
-	1	469367-1			
-	1	879103-2			
-	1	1-1752356-8			
-	2	1-18024-0			
-	1	18027-2			
-	1	1-18023-2			
-	1	1320908-6			
-	1	1633073-1			
-	1	1-455888-4			
-	2	1-22284-0			
-	1	356835-1			
-	1	240792-1			
-	1	1320928-5			
-	1	980371-4			
-	1	690472-2			
-	1	1-18023-1			
-	2	18025-2			
-	1	690472-1			
-	1	1338684-1			
-	1	3-22280-3			
-	1	356885-5			
-	1	1-1320921-0			
-	1	462006-6			
1	2	2-1333205-6			
-	-	-			
-	-	-			
-	1	2-455889-0			
-	1	238011-7			
1	2	456134-5			
1	2	3-456406-3			

- RECOMMENDED SPARE PARTS.
- GREASE RAM, CAM, CAM FOLLOWER AND FEED ROD LIGHTLY.
- CERTAIN TERMINALS REQUIRE LUBRICATION. REFER TO THE APPLICATOR INSTRUCTION SHEET FOR MORE INFORMATION.
- LUBRICATE DAILY PER THE APPLICATOR INSTRUCTION SHEET SUPPLIED WITH THE APPLICATOR.



**\* WARNING**  
ON INSTALLATION, SET WIRE DISC TO LARGEST WIRE SIZE SETTING. USE OF SETTINGS BELOW MIN. REQUIRED CRIMP HEIGHT SETTING WILL CAUSE DAMAGE TO CRIMP TOOLING.

DIMENSIONS: mm [IN] 	TOLERANCES UNLESS OTHERWISE SPECIFIED: 9 PLC ± 1 PLC ± 5 PLC ± 4 PLC ± ANGLES ± FINISH ±	DWN: STAKEM 250CT2011 CHK: G. BAILEY 250CT2011 T. ELBLIN 250CT2011 NAME: FINE ADJUST SIDE FEED HDI APPLICATOR SIZE: A1 CAGE CODE: 00779 DRAWING NO: C-1530578 SHEET 1 OF 1 REV A
-------------------------	--	--