

PRODUCT NO.
92790

PRODUCT NO. *92790-XXX	STAND OFF DIM "M"(mm)	LONG HDR (UPPER DECK)			LONG HDR (LOWER DECK)			HDR COLOR	SHEET NO.	MOUNTING STYLE TO PCB
		HDR+GUIDE 92794-XXX	GUIDE 92791-XXX	HDR 92140-XXX	HDR+GUIDE 92789-XXX	GUIDE 92791-XXX	HDR 92140-XXX			
000	0	000	001	005	000	001	000	BLACK	NO.2	
000LF	0	000LF	001	005LF	000LF	001	000LF			
020	2	020	001	045	020	021	040	BLACK	NO.3	
020LF	2	020LF	001	045LF	020LF	021	040LF			
500	0	500	001	505	500	001	500	NATURAL	NO.4	
500LF	0	500LF	001	505LF	500LF	001	500LF			
520	2	520	001	545	520	021	540	NATURAL	NO.5	
520LF	2	520LF	001	545LF	520LF	021	540LF			

\* 92790-X X X XX

- LEAD FREE OPTION
- HDR SOLDER TAIL
- STAND OFF HEIGHT (DIM "M")
- MOUNT STYLE TO PCB

NONE : NO  
LF : YES (SEE NOTE3)

0 : R/A

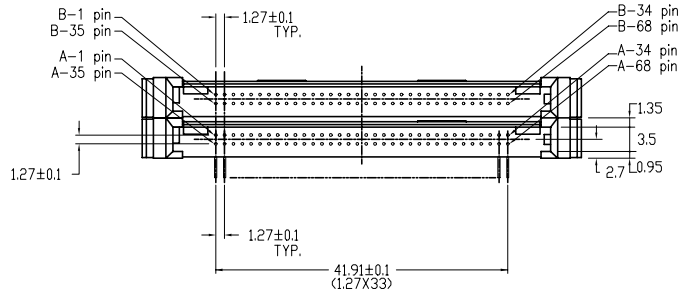
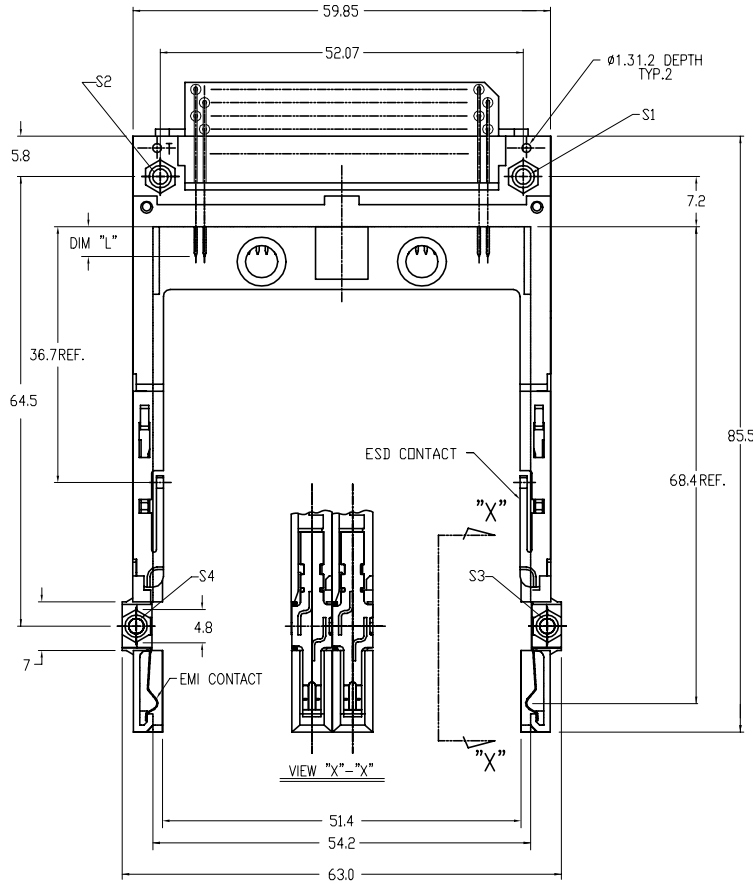
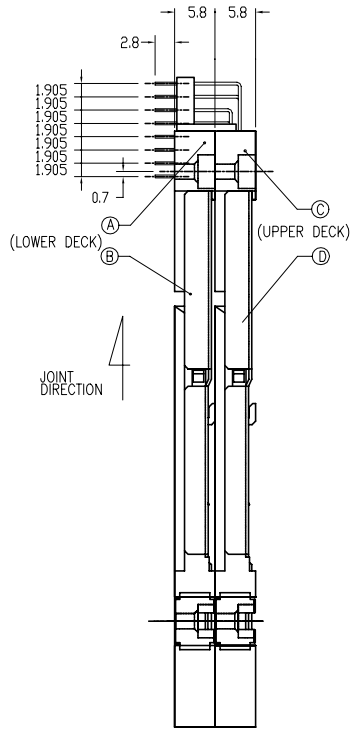
0 : 0mm(NONE)  
2 : 2mm

0 : TOP MOUNT  
5 : BOTTOM MOUNT

NOTE  
1.THIS PRODUCT MEETS EUROPEAN UNION DIRECTIVES AND OTHER COUNTRY REGULATIONS AS DESCRIBED IN GS-22-008.  
2.PRODUCT SPEC: 110-263

mat'l. code		surface <input checked="" type="checkbox"/> ISD1302		tolerance <input checked="" type="checkbox"/> ISO406 <input checked="" type="checkbox"/> ISO1101		projection		product family PCMCIA	
l trechn nodr		date		tolerances unless otherwise specified		MM		title	
A	J30018	N.T	01/19/93	angle	0.X±0.3	scale:2:1		68P DOUBLE LONG HEADER	
B	50085	M.K	04/14/95	0°±2'	0.XX±0.13			FOR TYPE I/II/III(WITH EMI CLIP)	
C	EX-N-007951	ZK	11/01/11		0.XXX±0.05			dwg no	
D	EX-N-011431	ZK	04/23/12	dr	M.Hasegawa	06/16/05	sheet 1 of 5		size
				engr M.Hasegawa		06/16/05	FCI		92790
				chr			type		Product Customer Drawing
				appd					
sheet index	revision	D	D	D	D	D			
	sheet	1	2	3	4	5			

PRODUCT NO.	FINISH(PIN)
92790-000	SEE NOTE 3-1
92790-000LF	SEE NOTE 3-2



NOTE

- ASSY PROCESS
  - TO MOUNT PART ①, ②, ③ ON PWB WITH SCREW (S1,S2) AND SOLDER.
  - TO JOINT PART ③, ④ INTO PART ①, ② THEN FIX PART ③, ④ WITH 2 SCREWS(S3,S4).

② MATERIAL

- PART ①, ② (HEADER ASSY)
  - PLASTIC : HIGH TEMPERATURE THERMOPLASTIC UL94V-0 BLACK
  - PIN : COPPER ALLOY

- PART ③, ④ (GUIDE ASSY)
  - PLASTIC : HIGH TEMPERATURE THERMOPLASTIC UL94V-0 BLACK
  - PLATE : STAINLESS
  - EMI CONTACT : PHOSPHOR BRONZE

③ -1 FINISH(PIN)

- UNDER PLATING : 0.5 um MIN.Ni
- CONTACT AREA : 0.076 um MIN. GOLD
- SOLDER TAIL : 2.5 um MIN. Sn-Pb

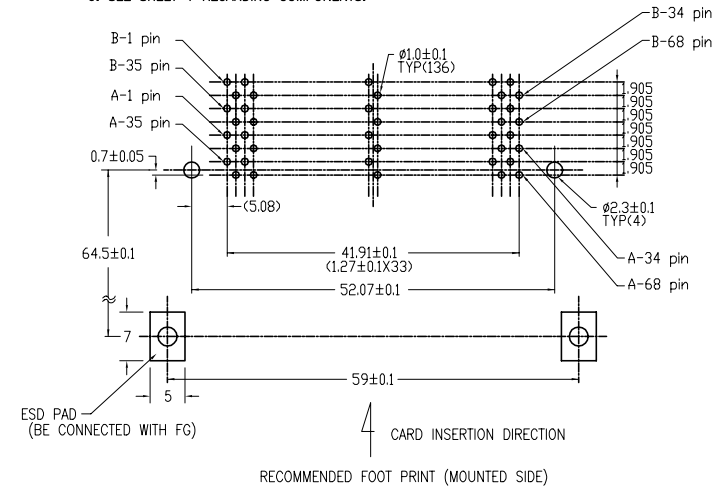
-2 FINISH(PIN) (FOR-XXXLF)

- UNDER PLATING : 0.5 um MIN.Ni
- CONTACT AREA : 0.076 um MIN. GOLD
- SOLDER TAIL : 2.5 um MIN. Sn

4.	DIM "L"	4.25±0.1	3.5±0.1	5.0±0.1
	PIN NUMBER	OTHERS	36.67	117.34 36.51.68

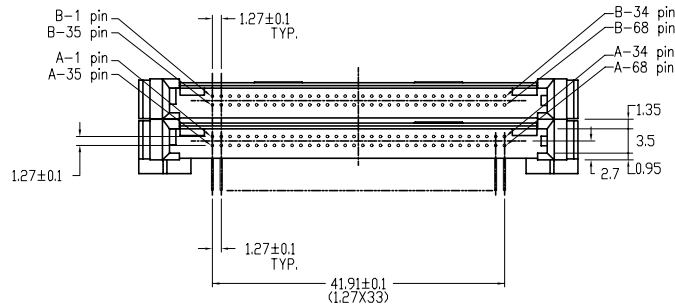
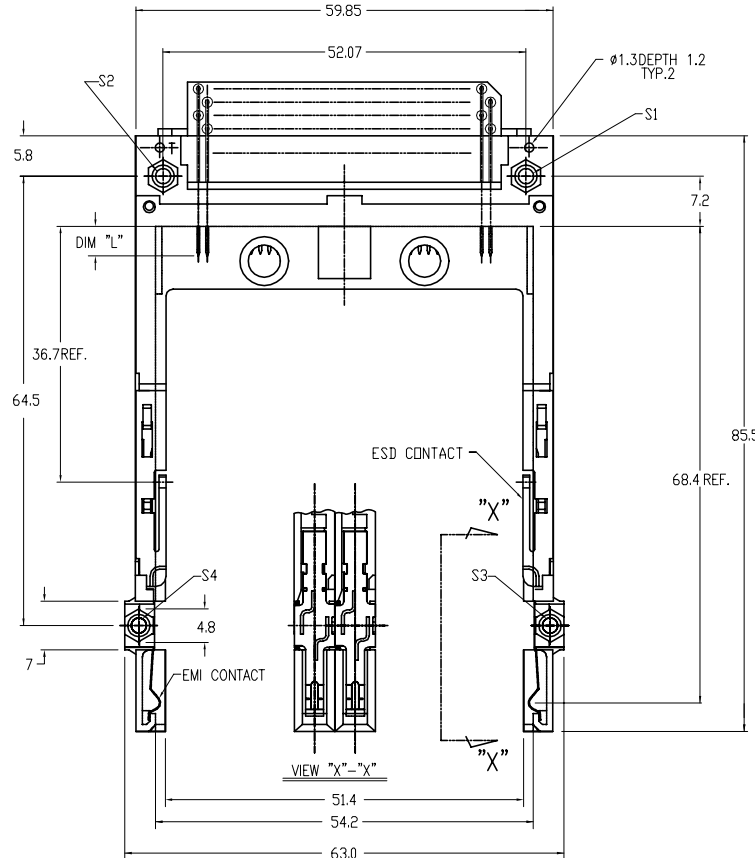
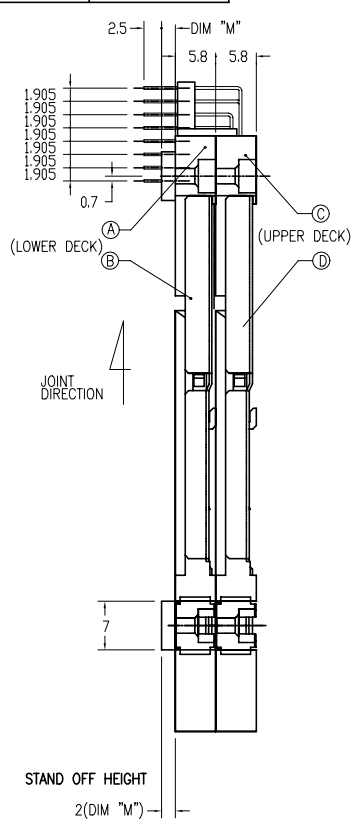
5. GENERAL TOLERANCE : ±0.3

6. SEE SHEET 1 REGARDING COMPONENTS.



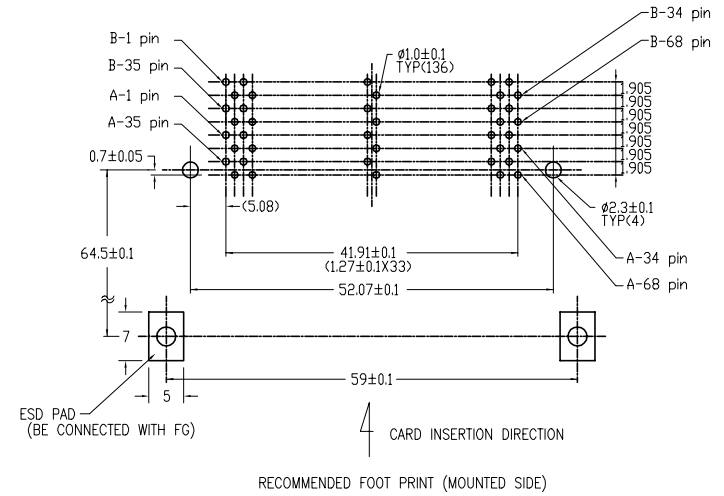
mat'l. code	surface ISO1302	tolerance ISO406 ISO1101	projection	product family PCMCIA
ltr ecn nodr date	tolerances unless otherwise specified		MM	title 68P DOUBLE LONG HEADER FOR TYPE I/II/III(WITH EMI CLIP)
D	angle	0.X±0.3	scale 2:1	dwg no 92790
	0°±2'	0.XXX±0.05		sheet 2 of 5 size A4
	dr	M.Hasegawa 06/16/05	FCI	type Product Customer Drawing
	engr	M.Hasegawa 06/16/05		
	chr			
sheet index	revision sheet			

PRODUCT NO.	FINISH(PIN)
92790-020	SEE NOTE 3-1
92790-020LF	SEE NOTE 3-2



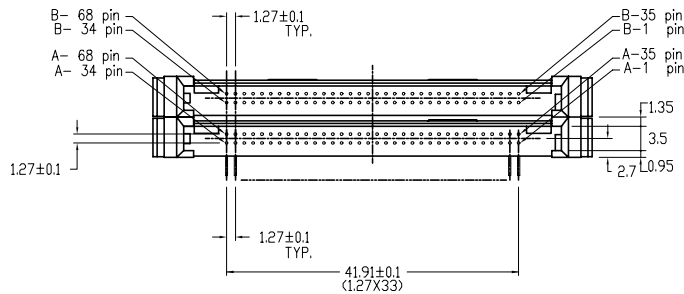
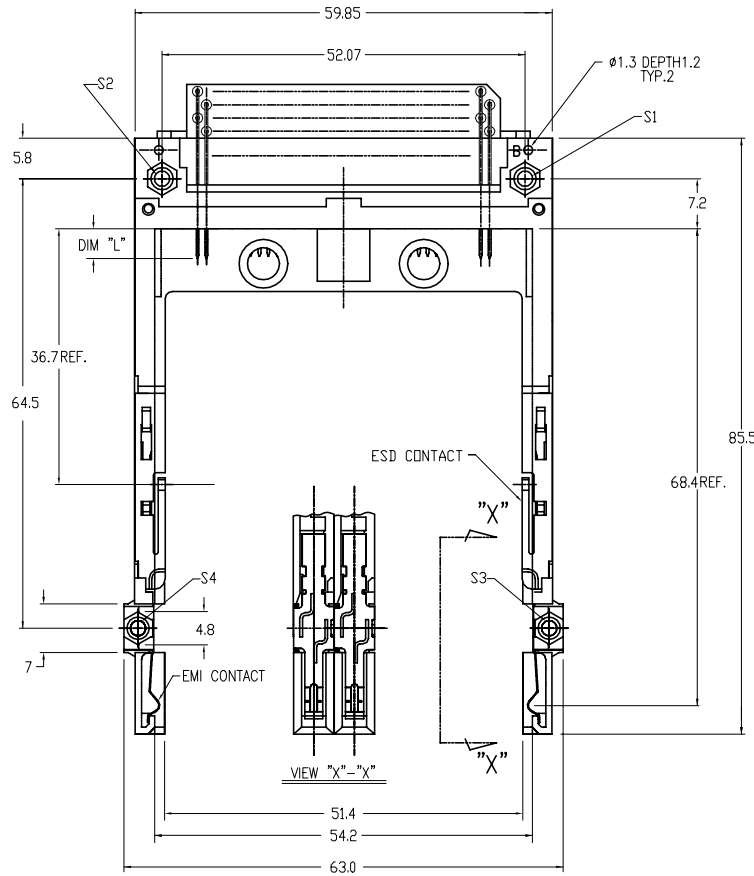
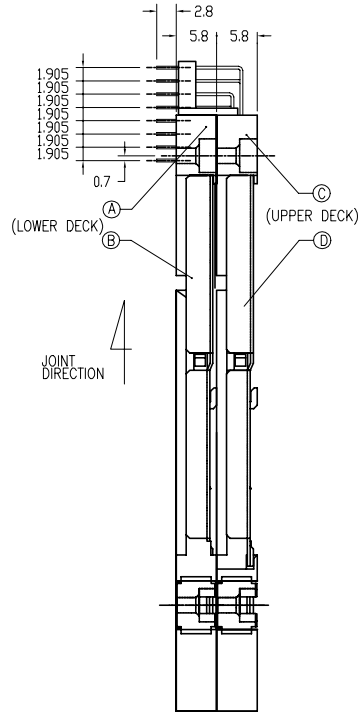
NOTE

- ASSY PROCESS
  - 1.1 TO MOUNT PART ①, ②, ③ ON PWB WITH SCREW (S1,S2) AND SOLDER.
  - 1.2 TO JOINT PART ④, ⑤ INTO PART ①, ② THEN FIX PART ③, ⑥ WITH 2 SCREWS(S3,S4).
- MATERIAL
  - 2.1 PART ①, ② (HEADER ASSY)  
PLASTIC : HIGH TEMPERATURE THERMOPLASTIC UL94V-0 BLACK  
PIN : COPPER ALLOY
  - 2.2 PART ③, ④ (GUIDE ASSY)  
PLASTIC : HIGH TEMPERATURE THERMOPLASTIC UL94V-0 BLACK  
PLATE : STAINLESS  
EMI CONTACT : PHOSPHOR BRONZE
- FINISH(PIN)
  - 1 FINISH(PIN)  
UNDER PLATING : 0.5 µm MIN.Ni  
CONTACT AREA : 0.076 µm MIN. GOLD  
SOLDER TAIL : 2.5 µm MIN. Sn-Pb
  - 2 FINISH(PIN) (FOR-XXXLF)  
UNDER PLATING : 0.5 µm MIN.Ni  
CONTACT AREA : 0.076 µm MIN. GOLD  
SOLDER TAIL : 2.5 µm MIN. Sn
- |            |          |         |                     |
|------------|----------|---------|---------------------|
| DIM "L"    | 4.25±0.1 | 3.5±0.1 | 5.0±0.1             |
| PIN NUMBER | OTHERS   | 36.67   | 1.17,34<br>35,51,68 |
- GENERAL TOLERANCE : ±0.3
- SEE SHEET 1 REGARDING COMPONENTS.



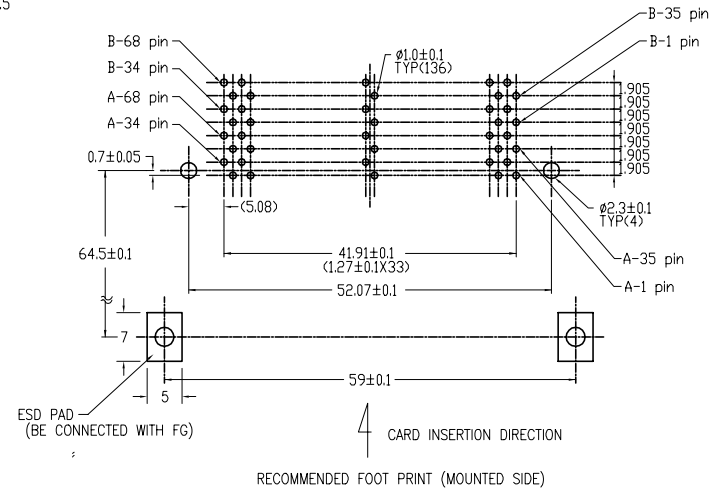
mat'l. code	surface ISO1302	tolerance ISO406 ISO1101	projection	product family PCMCIA
ltr ecn nodr date	tolerances unless otherwise specified		MM	68P DOUBLE LONG HEADER FOR TYPE I/II/III(WITH EMI CLIP)
D	angle	0.X±0.3 0.XX±0.13 0'±2"	scale 2:1	dwg no 92790 sheet 3 of 5 size A4
	dr	M.Hasegawa 06/16/05	FCI	type Product Customer Drawing
	engr	M.Hasegawa 06/16/05		
	chr			
sheet index	revision sheet			

PRODUCT NO.	FINISH(PIN)
92790-500	SEE NOTE 3-1
92790-500LF	SEE NOTE 3-2



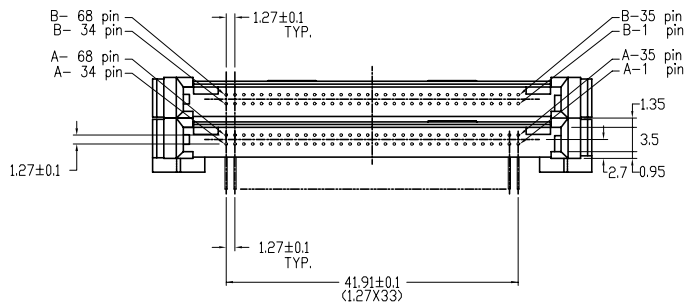
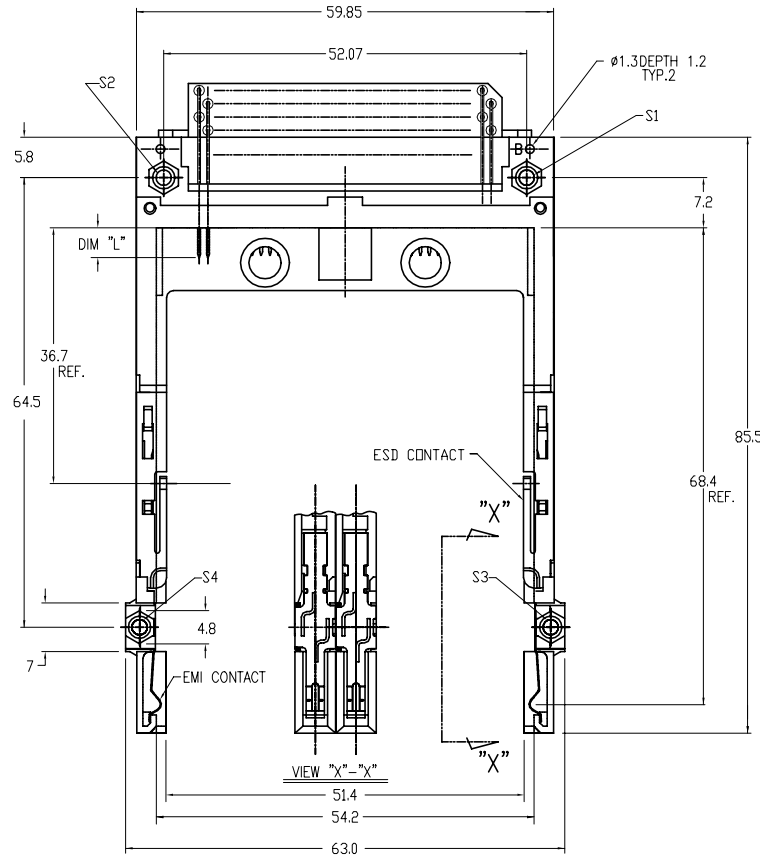
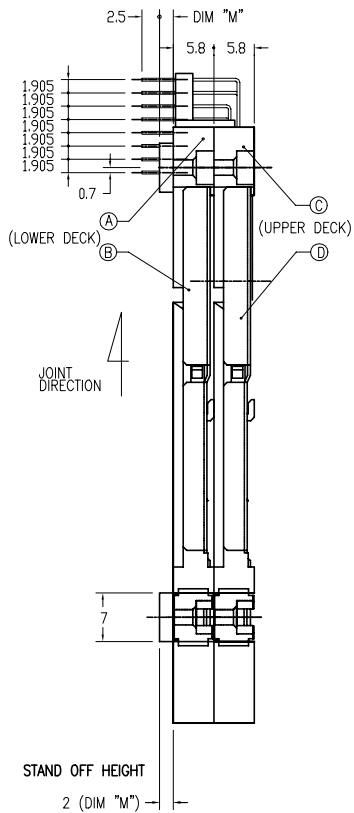
NOTE

- ASSY PROCESS
  - TO MOUNT PART ④, ⑤ ON PWB WITH SCREW (S1,S2) AND SOLDER.
  - TO JOINT PART ⑥, ⑦ INTO PART ④, ⑤ THEN FIX PART ⑥, ⑦ WITH 2 SCREWS(S3,S4).
- MATERIAL
  - PART ④, ⑤ (HEADER ASSY)
    - PLASTIC : HIGH TEMPERATURE THERMOPLASTIC UL94V-0 BLACK
    - PIN : COPPER ALLOY
  - PART ⑥, ⑦ (GUIDE ASSY)
    - PLASTIC : HIGH TEMPERATURE THERMOPLASTIC UL94V-0 BLACK
    - PLATE : STAINLESS
    - EMI CONTACT : PHOSPHOR BRONZE
- FINISH(PIN)
  - FINISH(PIN)
    - UNDER PLATING : 0.5 μm MIN.Ni
    - CONTACT AREA : 0.076 μm MIN. GOLD
    - SOLDER TAIL : 2.5 μm MIN. Sn-Pb
  - FINISH(PIN) (FOR-XXXLF)
    - UNDER PLATING : 0.5 μm MIN.Ni
    - CONTACT AREA : 0.076 μm MIN. GOLD
    - SOLDER TAIL : 2.5 μm MIN. Sn
- | DIM "L"    | 4.25±0.1 | 3.5±0.1 | 5.0±0.1              |
|------------|----------|---------|----------------------|
| PIN NUMBER | OTHERS   | 36.67   | 1.17, 34, 35, 51, 88 |
- GENERAL TOLERANCE : ±0.3
- SEE SHEET 1 REGARDING COMPONENTS.



mat'l. code	surface ISO1302	tolerance ISO406 ISO1101	projection MM	product family PCMCIA
l/tecn nodr	tolerances unless otherwise specified		scale 2:1	title 68P DOUBLE LONG HEADER FOR TYPE I/II/III(WITH EMI CLIP)
d	angle 0°±2'	0.X±0.3 0.XX±0.13 0.XXX±0.05	MM	dwg no 92790
	dr M.Hasegawa	06/16/05	FCI	sheet 4 of 5 size A4
	engr M.Hasegawa	06/16/05		type Product Customer Drawing
sheet index	revision sheet			

PRODUCT NO.	FINISH(PIN)
92790-520	SEE NOTE 3-1
92790-520LF	SEE NOTE 3-2

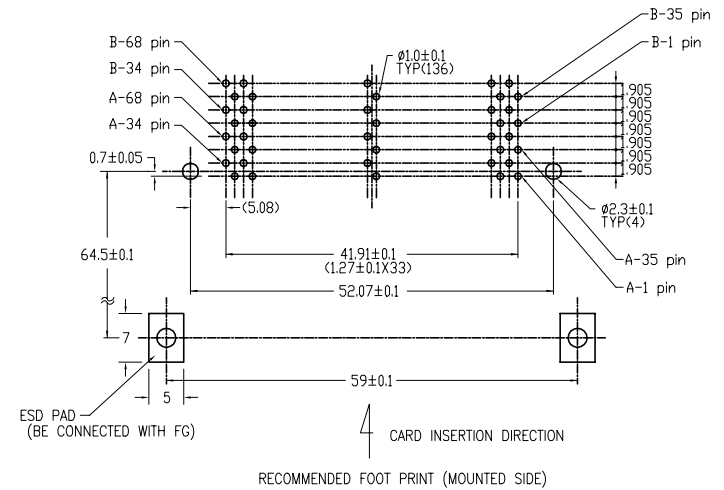


NOTE

- ASSY PROCESS
  - TO MOUNT PART (A), (C), (D) ON PWB WITH SCREW (S1,S2) AND SOLDER.
  - TO JOINT PART (B), (E) INTO PART (A), (C) THEN FIX PART B, D WITH 2 SCREWS(S3,S4).
- MATERIAL
  - PART (A), (C) (HEADER ASSY)  
 PLASTIC : HIGH TEMPERATURE THERMOPLASTIC UL94V-0 BLACK  
 PIN : COPPER ALLOY
  - PART (B), (D) (GUIDE ASSY)  
 PLASTIC : GUIDE HIGH TEMPERATURE THERMOPLASTIC UL94V-0 BLACK  
 PLATE : STAINLESS  
 EMI CONTACT : PHOSPHOR BRONZE
- FINISH(PIN)
  - FINISH(PIN)  
 UNDER PLATING : 0.5 um MIN.Ni  
 CONTACT AREA : 0.076 um MIN. GOLD  
 SOLDER TAIL : 2.5 um MIN. Sn-Pb
  - FINISH(PIN) (FOR-XXXXLF)  
 UNDER PLATING : 0.5 um MIN.Ni  
 CONTACT AREA : 0.076 um MIN. GOLD  
 SOLDER TAIL : 2.5 um MIN. Sn

DIM "L"	4.25±0.1	3.5±0.1	5.0±0.1
PIN NUMBER	OTHERS	36.67	1,17,34,35,37,38

- GENERAL TOLERANCE : ±0.3
- SEE SHEET 1 REGARDING COMPONENTS.



mat'l. code	surface ISO1302	tolerance ISO406 ISO1101	projection	product family PCMCIA
l/tecn nodr date	tolerances unless otherwise specified		MM	868P DOUBLE LONG HEADER FOR TYPE I/II/III(WITH EMI CLIP)
D	angle	0.X±0.3 0.XX±0.13 0°±2'	scale 2:1	dwg no 92790 sheet 5 of 5 size A4
	dr	M.Hasegawa 06/16/05	FCI	type Product Customer Drawing
	engr	M.Hasegawa 06/16/05		
	chr			
	appd			
sheet index	revision sheet			