

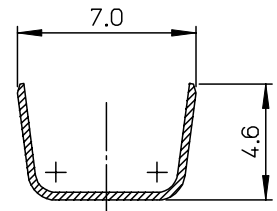
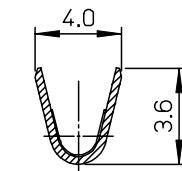
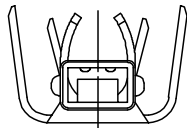
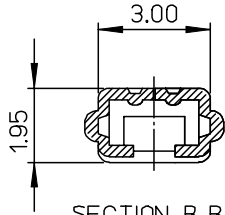
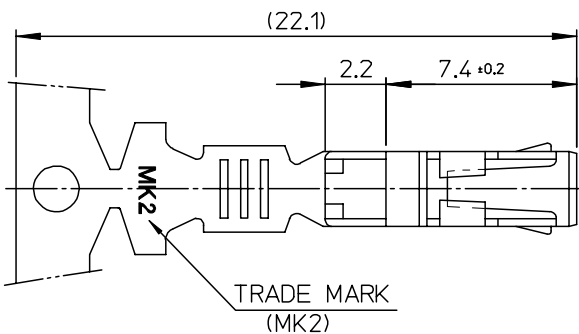
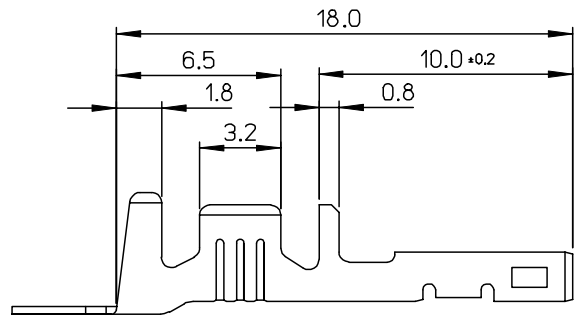
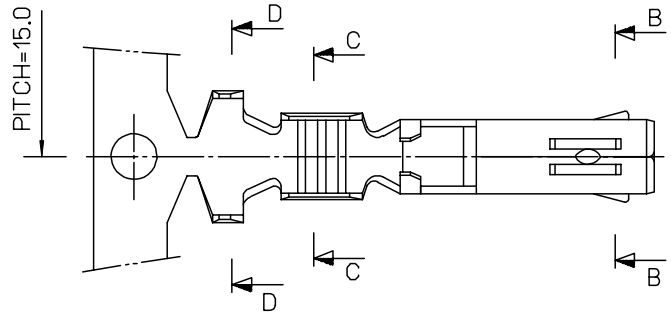
DWG. NO.  
SD-35746-003

SIMILAR ITEM

PROJECT NO.

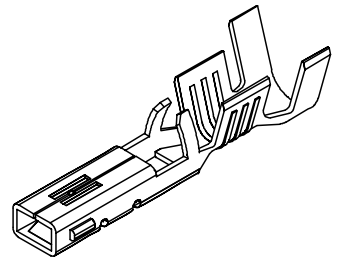
B

DO NOT SCALE DRAWING  
DIMENSION IN METRIC



NOTES

1. MATERIAL : PHOSPHOR BRONZE  
0.3mm THICKNESS
2. FINISH : PRE-PLATED TIN
3. RECOMMENDED LENGTH OF WIRE STRIP IS 4.0-4.8mm.



REVISED ECN NO. KOR2005-0062 DRWN: J.B.JIN 04/10/01 CHK: W.Y. YANG APPR: C.W.LEE	DESCRIPTION	QUALITY SYMBOLS	GENERAL TOLERANCES: (UNLESS SPECIFIED)		SCALE 5:1	DESIGN UNITS <input checked="" type="checkbox"/> mm <input type="checkbox"/> INCH	<input checked="" type="checkbox"/> THIRD ANGLE <input type="checkbox"/> FIRST ANGLE PROJECTION	DIMENSIONS: <input type="checkbox"/> mm <input type="checkbox"/> INCH <input checked="" type="checkbox"/> mm ONLY		SHT REV
		MAJOR ▼ = 0 CRITICAL ▽ = 0	mm	INCH	DRAWN BY & DATE B.K.CHOI 92/11/17	TITLE: .070 FEMALE TERMINAL-L (A-TYPE)		MOLEX INCORPORATED		REVISION ON CAD ONLY
D1	REV	4 PLACES	±0.	±-	CHECKED BY & DATE B.K.CHOI 92/11/17		APPROVED BY & DATE C.W.LEE		SHEET NO. 1 OF 1	
		3 PLACES	±0.	±-	CAD FILENAME S357460310AB.MI		MATERIAL NO. 357460310	DRAWING NO. SD-35746-003	SIZE B	
		2 PLACES	±0.30	±-	DRAFT WHERE APPLICABLE MUST REMAIN WITHIN DIMENSIONS		THIS DRAWING CONTAINS INFORMATION THAT IS PROPRIETARY TO MOLEX INCORPORATED AND SHOULD NOT BE USED WITHOUT WRITTEN PERMISSION.			
		1 PLACE	±0.30	±-	ANGULAR: ± °		KOREA		MX-A3	