

# TLP700

Industrial inverters  
 Inverter for air conditioners  
 IGBT/Power MOSFET gate drive

TLP700 consists of a GaAlAs light-emitting diode and an integrated photodetector.

This unit is 6-lead SDIP package. The TLP700 is 50% smaller than the 8-pin DIP and meets the reinforced insulation class requirements of international safety standards. Therefore the mounting area can be reduced in equipment requiring safety standard certification.

The TLP700 is suitable for gate driving circuits for IGBTs or power MOSFETs. In particular, the TLP700 is capable of "direct" gate driving of low-power IGBTs.

- Peak output current:  $\pm 2.0$  A (max)
- Guaranteed performance over temperature:  $-40$  to  $100^\circ\text{C}$
- Supply current: 2 mA (max)
- Power supply voltage: 15 to 30 V
- Threshold input current:  $I_{FLH} = 5$  mA (max)
- Switching time ( $t_{PLH} / t_{PHL}$ ): 500 ns (max)
- Common mode transient immunity:  $\pm 15$  kV/ $\mu\text{s}$  (min)
- Isolation voltage: 5000 Vrms (min)
- Construction mechanical rating

	7.62-mm pitch standard type	10.16-mm pitch TLPXXXF type
Creepage Distance	7.0 mm (min)	8.0 mm (min)
Clearance	7.0 mm (min)	8.0 mm (min)
Insulation Thickness	0.4 mm (min)	0.4 mm (min)

- UL recognized: UL1577, File No. E67349
- Option (D4) type  
 TÜV approved: EN60747-5-2

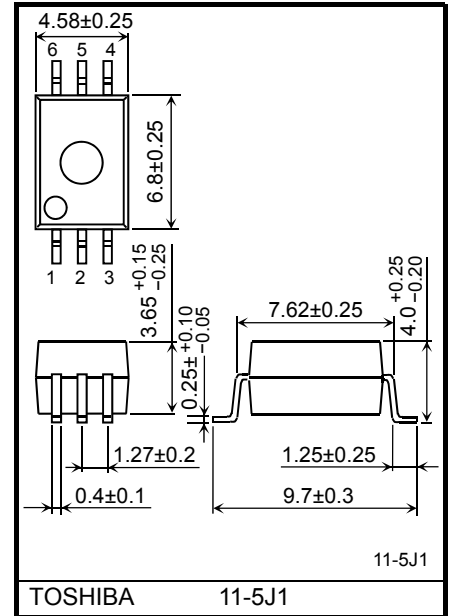
Maximum operating insulation voltage: 890 Vpk  
 Highest permissible over voltage: 8000 Vpk

**( Note )** When a EN60747-5-2 approved type is needed, please designate the "Option(D4)"

### Truth Table

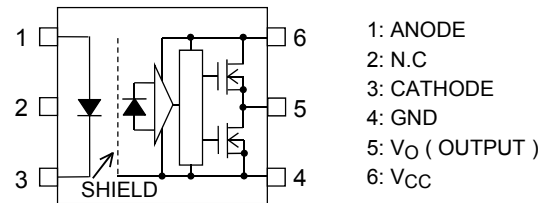
Input	LED	M1	M2	Output
H	ON	ON	OFF	H
L	OFF	OFF	ON	L

Unit: mm

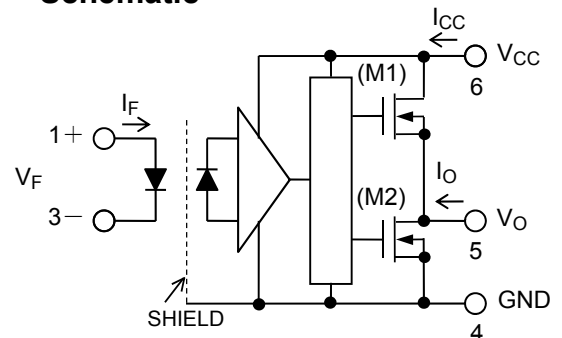


Weight: 0.26 g (typ.)

### Pin Configuration (Top View)



### Schematic



A 0.1- $\mu\text{F}$  bypass capacitor must be connected between pins 6 and 4. (See Note 6)

Start of commercial production  
 2007/08

**Absolute Maximum Ratings (Ta = 25 °C)**

Characteristics		Symbol	Rating	Unit	
LED	Forward current	I <sub>F</sub>	20	mA	
	Forward current derating (Ta ≥ 85°C)	ΔI <sub>F</sub> /ΔTa	-0.54	mA/°C	
	Peak transient forward current (Note 1)	I <sub>FP</sub>	1	A	
	Reverse voltage	V <sub>R</sub>	5	V	
	Junction temperature	T <sub>j</sub>	125	°C	
Detector	"H" peak output current	Ta=-40 to 100 °C (Note 2)	I <sub>OPH</sub>	-2.0	A
	"L" peak output current		I <sub>OPL</sub>	2.0	A
	Output voltage	V <sub>O</sub>	35	V	
	Supply voltage	V <sub>CC</sub>	35	V	
	Junction temperature	T <sub>j</sub>	125	°C	
Operating frequency (Note 3)	f	50	kHz		
Operating temperature range	T <sub>opr</sub>	-40 to 100	°C		
Storage temperature range	T <sub>stg</sub>	-55 to 125	°C		
Lead soldering temperature (10 s) (Note 4)	T <sub>sol</sub>	260	°C		
Isolation voltage (AC, 1 minute, R.H. ≤ 60%) (Note 5)	BV <sub>S</sub>	5000	V <sub>rms</sub>		

Note: Using continuously under heavy loads (e.g. the application of high temperature/current/voltage and the significant change in temperature, etc.) may cause this product to decrease in the reliability significantly even if the operating conditions (i.e. operating temperature/current/voltage, etc.) are within the absolute maximum ratings.

Please design the appropriate reliability upon reviewing the Toshiba Semiconductor Reliability Handbook ("Handling Precautions"/"Derating Concept and Methods") and individual reliability data (i.e. reliability test report and estimated failure rate, etc).

Note 1: Pulse width P<sub>W</sub> ≤ 1 μs, 300 pps

Note 2: Exponential waveform pulse width P<sub>W</sub> ≤ 0.3 μs, f ≤ 15 kHz

Note 3: Exponential waveform I<sub>OPH</sub> ≥ -1.5 A (≤ 0.3 μs), I<sub>OPL</sub> ≤ +1.5 A (≤ 0.3 μs), Ta=100°C

Note 4: For the effective lead soldering area

Note 5: Device considered a two-terminal device: pins 1, 2 and 3 paired with pins 4, 5 and 6 respectively.

Note 6: A ceramic capacitor (0.1 μF) should be connected from pin 6 to pin 4 to stabilize the operation of the high gain linear amplifier. Failure to provide the bypassing may impair the switching property.  
The total lead length between capacitor and coupler should not exceed 1 cm.

**Recommended Operating Conditions**

Characteristics	Symbol	Min	Typ.	Max	Unit
Input current, ON (Note 7)	I <sub>F</sub> (ON)	7.5	—	10	mA
Input voltage, OFF	V <sub>F</sub> (OFF)	0	—	0.8	V
Supply voltage * (Note 8)	V <sub>CC</sub>	15	—	30	V
Peak output current	I <sub>OPH</sub> / I <sub>OPL</sub>	—	—	± 1.5	A
Operating temperature	T <sub>opr</sub>	-40	—	100	°C

\* This item denotes operating ranges, not meaning of recommended operating conditions.

Note: Recommended operating conditions are given as a design guideline to obtain expected performance of the device. Additionally, each item is an independent guideline respectively. In developing designs using this product, please confirm specified characteristics shown in this document.

Note 7: Input signal rise time (fall time) ≤ 0.5 μs.

Note 8: If the V<sub>CC</sub> rise slope is sharp, an internal circuit might not operate with stability. Please design the V<sub>CC</sub> rise slope under 3.0 V/μs.

**Electrical Characteristics (Ta = -40 to 100 °C, unless otherwise specified)**

Characteristics		Symbol	Test Circuit	Test Condition	Min	Typ.*	Max	Unit	
Forward voltage		V <sub>F</sub>	—	I <sub>F</sub> = 10 mA, Ta = 25 °C	—	1.57	1.75	V	
Temperature coefficient of forward voltage		ΔV <sub>F</sub> /ΔTa	—	I <sub>F</sub> = 10 mA	—	-1.8	—	mV/°C	
Input reverse current		I <sub>R</sub>	—	V <sub>R</sub> = 5 V, Ta = 25 °C	—	—	10	μA	
Input capacitance		C <sub>T</sub>	—	V = 0 V, f = 1 MHz, Ta = 25 °C	—	100	—	pF	
Output current (Note 9)	"H" Level	I <sub>OPH1</sub>	1	V <sub>CC</sub> = 15 V I <sub>F</sub> = 5 mA	V <sub>6-5</sub> = 3.5 V	—	-1.4	-1.0	A
		I <sub>OPH2</sub>			V <sub>6-5</sub> = 7 V	—	—	-1.5	
	"L" Level	I <sub>OPL1</sub>	2	V <sub>CC</sub> = 15 V I <sub>F</sub> = 0 mA	V <sub>5-4</sub> = 2.5 V	1.0	1.4	—	
		I <sub>OPL2</sub>			V <sub>5-4</sub> = 7 V	1.5	—	—	
Output voltage	"H" Level	V <sub>OH</sub>	3	V <sub>CC1</sub> =+15V, V <sub>EE1</sub> =-15V R <sub>L</sub> = 200Ω, I <sub>F</sub> = 5 mA	11	13.7	—	V	
	"L" Level	V <sub>OL</sub>	4	V <sub>CC1</sub> =+15V, V <sub>EE1</sub> =-15V R <sub>L</sub> = 200Ω, V <sub>F</sub> = 0.8 V	—	-14.9	-12.5		
Supply current	"H" Level	I <sub>CCH</sub>	5	V <sub>CC</sub> = 30 V V <sub>O</sub> = Open	I <sub>F</sub> = 10 mA	—	1.3	2.0	mA
	"L" Level	I <sub>CCL</sub>	6			I <sub>F</sub> = 0 mA	—	1.3	
Threshold input current	L → H	I <sub>FLH</sub>	—	V <sub>CC</sub> = 15 V, V <sub>O</sub> > 1 V	—	1.8	5	mA	
Threshold input voltage	H → L	V <sub>FHL</sub>	—	V <sub>CC</sub> = 15 V, V <sub>O</sub> < 1 V	0.8	—	—	V	
Supply voltage		V <sub>CC</sub>	—	—	15	—	30	V	
UVLO thresh hold		V <sub>UVLO+</sub>	—	V <sub>O</sub> > 2.5V, I <sub>F</sub> = 5 mA	11.0	12.5	13.5	V	
		V <sub>UVLO-</sub>	—	V <sub>O</sub> < 2.5V, I <sub>F</sub> = 5 mA	9.5	11.0	12.0	V	
UVLO hysteresis		UVLO <sub>HYS</sub>	—	—	—	1.5	—	V	

(\*): All typical values are at Ta = 25°C

Note 9: Duration of I<sub>O</sub> time ≤ 50 μs, 1 pulse

Note 10: This product is more sensitive than conventional products to electrostatic discharge (ESD) owing to its low power consumption design.

It is therefore all the more necessary to observe general precautions regarding ESD when handling this component.

**Isolation Characteristics (Ta = 25 °C)**

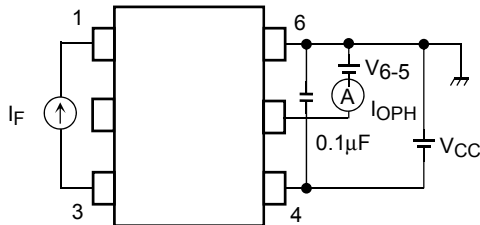
Characteristic	Symbol	Test Condition	Min	Typ.	Max	Unit
Capacitance input to output	C <sub>S</sub>	V <sub>s</sub> = 0 V, f = 1MHz (Note 5)	—	1.0	—	pF
Isolation resistance	R <sub>S</sub>	R.H. ≤ 60 %, V <sub>S</sub> = 500 V (Note 5)	1×10 <sup>12</sup>	10 <sup>14</sup>	—	Ω
Isolation voltage	BV <sub>S</sub>	AC, 1 minute	5000	—	—	V <sub>rms</sub>
		AC, 1 second, in oil	—	10000	—	
		DC, 1 minute, in oil	—	10000	—	V <sub>dc</sub>

## Switching Characteristics (Ta = -40 to 100 °C, unless otherwise specified)

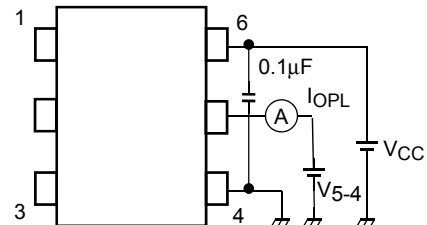
Characteristics	Symbol	Test Circuit	Test Condition	Min	Typ.*	Max	Unit	
Propagation delay time	L → H	7	V <sub>CC</sub> = 30 V R <sub>g</sub> = 20 Ω C <sub>g</sub> = 10 nF	I <sub>F</sub> = 0 → 5 mA	50	—	500	ns
	H → L			I <sub>F</sub> = 5 → 0 mA	50	—	500	
Output rise time (10–90 %)	t <sub>r</sub>	7	V <sub>CC</sub> = 30 V R <sub>g</sub> = 20 Ω C <sub>g</sub> = 10 nF	I <sub>F</sub> = 0 → 5 mA	—	50	—	ns
Output fall time (90–10 %)	t <sub>f</sub>			I <sub>F</sub> = 5 → 0 mA	—	50	—	
Switching time dispersion between ON and OFF	t <sub>pHL</sub> - t <sub>pLH</sub>	7	V <sub>CC</sub> = 30 V R <sub>g</sub> = 20 Ω C <sub>g</sub> = 10 nF	I <sub>F</sub> = 0 ↔ 5 mA	—	—	250	ns
Common mode transient immunity at HIGH level output	CM <sub>H</sub>	8	V <sub>CM</sub> = 1000 V <sub>p-p</sub> Ta = 25 °C V <sub>CC</sub> = 30 V	I <sub>F</sub> = 5 mA V <sub>O</sub> (min) = 26 V	-15	—	—	kV/μs
Common mode transient immunity at LOW level output	CM <sub>L</sub>			I <sub>F</sub> = 0 mA V <sub>O</sub> (max) = 1 V	15	—	—	

(\*): All typical values are at Ta = 25 °C.

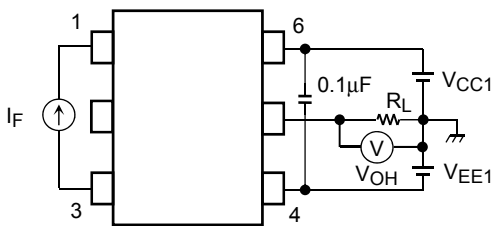
**Test Circuit 1: I<sub>OPH</sub>**



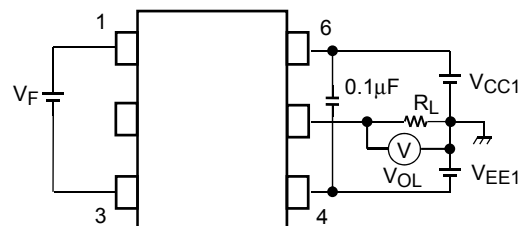
**Test Circuit 2: I<sub>OPL</sub>**



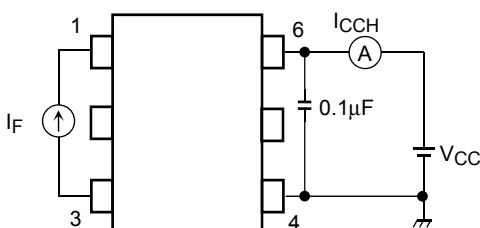
**Test Circuit 3: V<sub>OH</sub>**



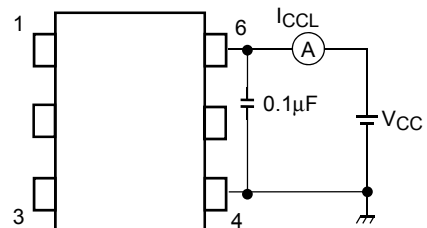
**Test Circuit 4: V<sub>OL</sub>**



**Test Circuit 5: I<sub>CCH</sub>**

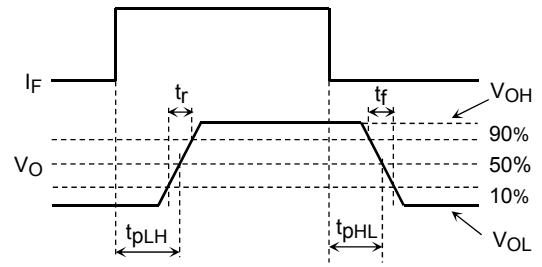
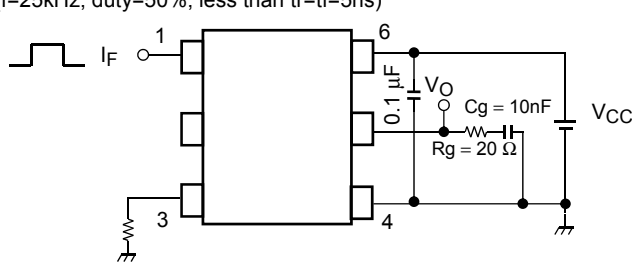


**Test Circuit 6: I<sub>CCL</sub>**

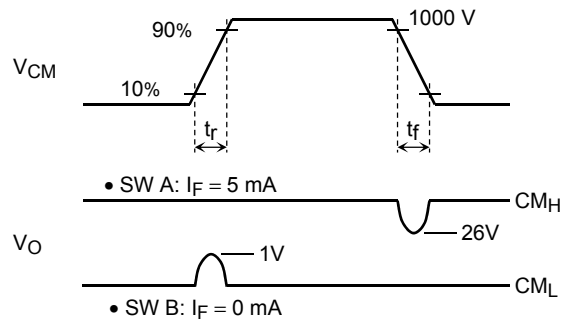
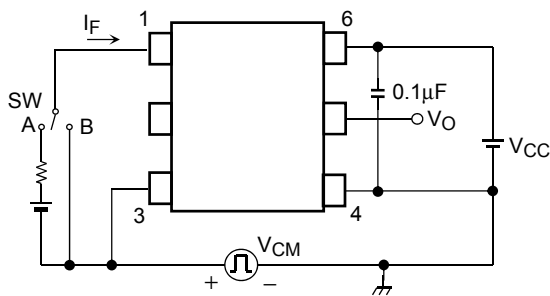


## Test Circuit 7: $t_{pLH}$ , $t_{pHL}$ , $t_r$ , $t_f$ , $|t_{pHL}-t_{pLH}|$

( $f=25\text{kHz}$ ,  $\text{duty}=50\%$ , less than  $t_r=t_f=5\text{ns}$ )



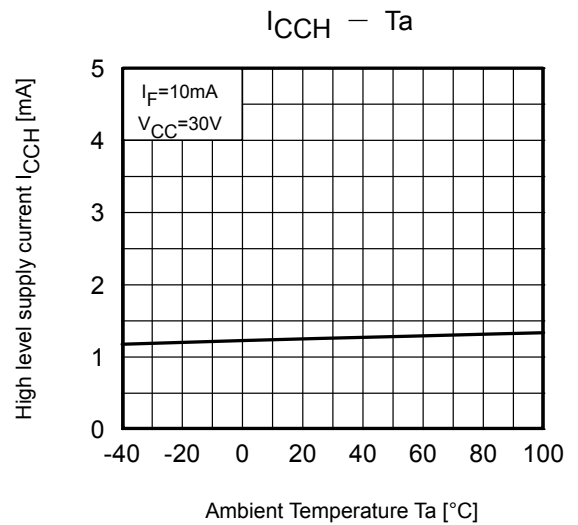
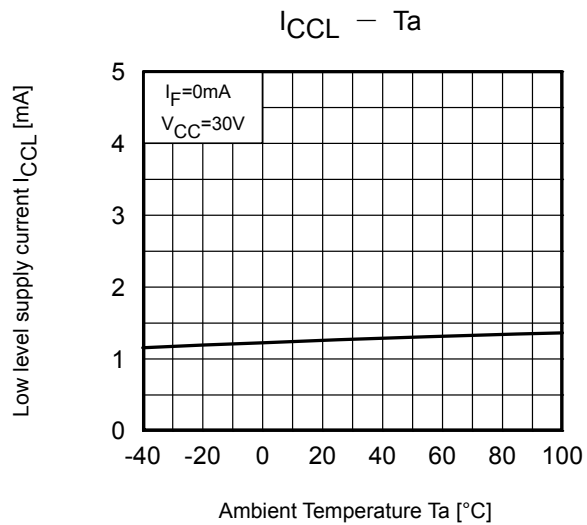
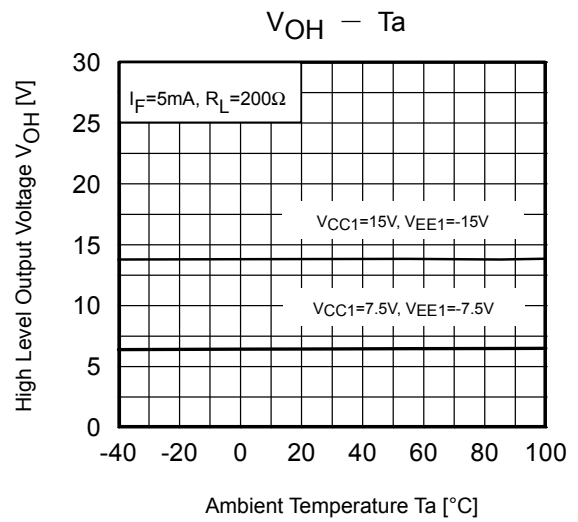
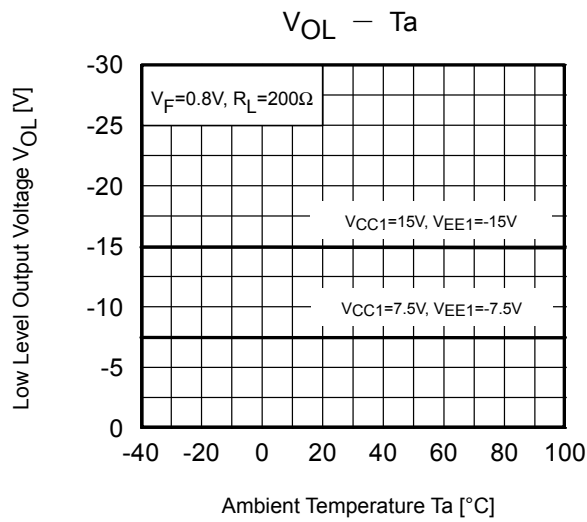
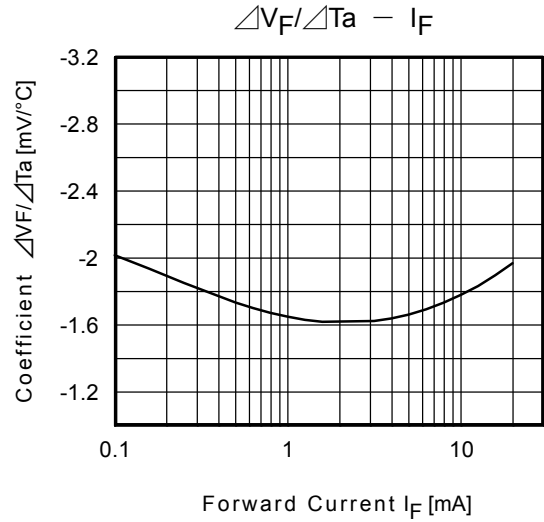
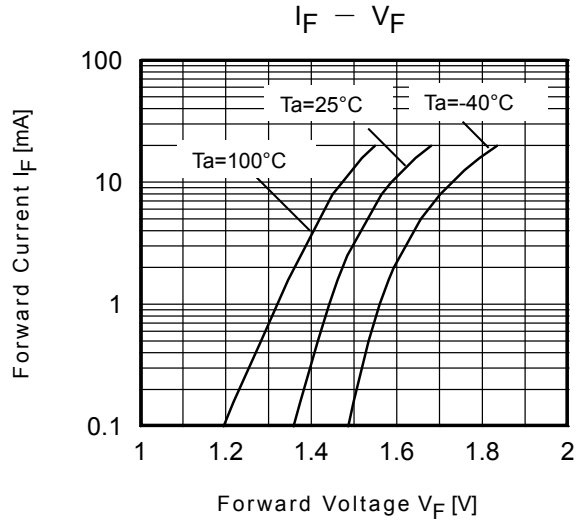
## Test Circuit 8: $CM_H$ , $CM_L$



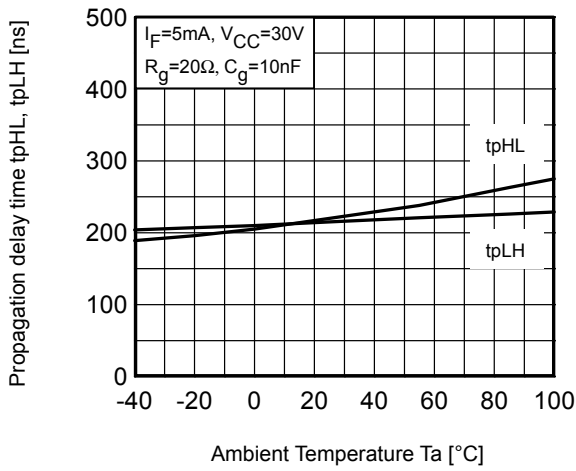
$$CM_H = - \frac{800 \text{ V}}{t_f (\mu\text{s})}$$

$$CM_L = \frac{800 \text{ V}}{t_r (\mu\text{s})}$$

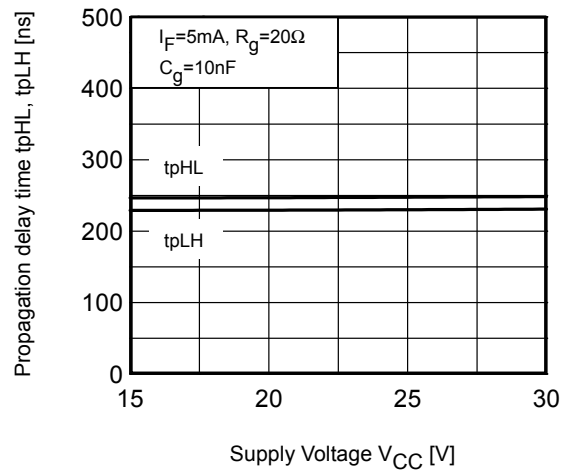
$CM_L$  ( $CM_H$ ) is the maximum rate of rise (fall) of the common mode voltage that can be sustained with the output voltage in the LOW (HIGH) state.



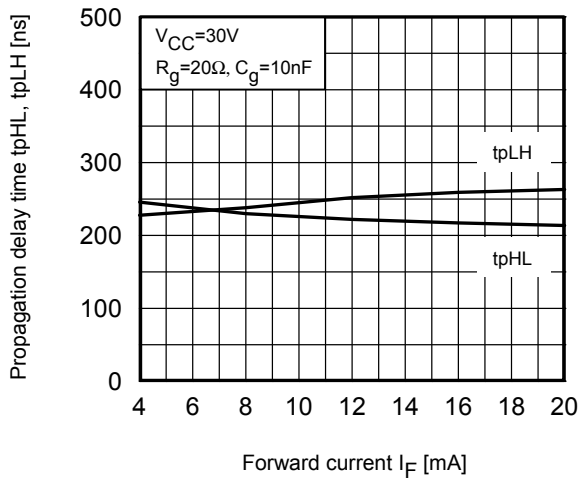
$t_{PLH}, t_{PHL} - T_a$



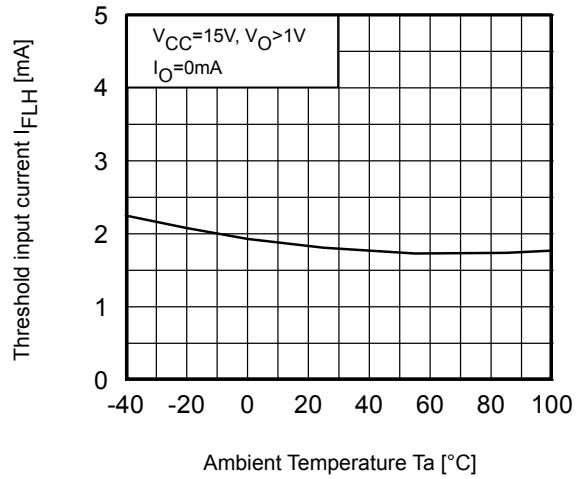
$t_{PLH}, t_{PHL} - V_{CC}$



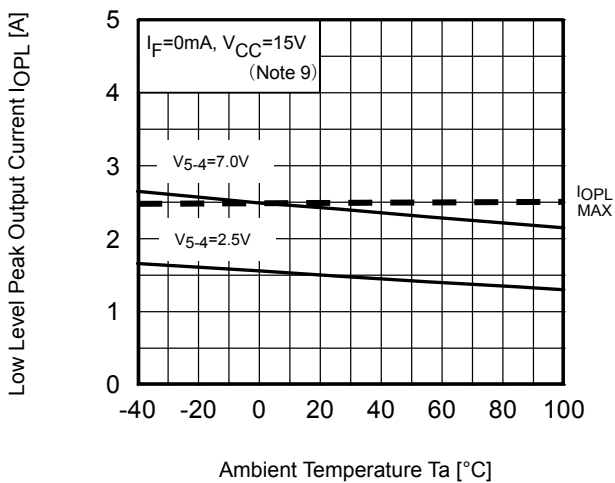
$t_{PLH}, t_{PHL} - I_F$



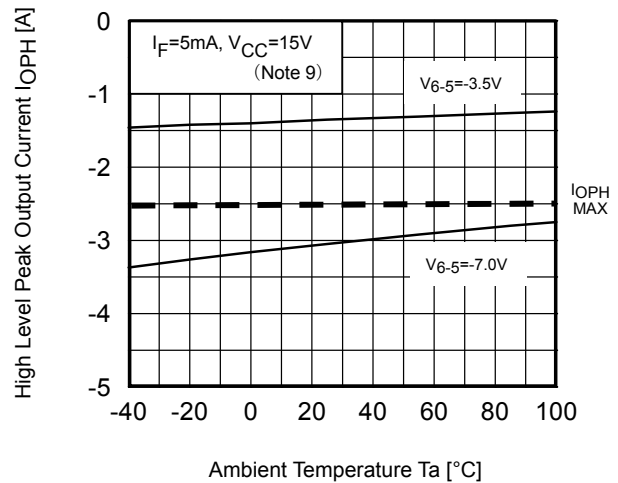
$I_{FLH} - T_a$



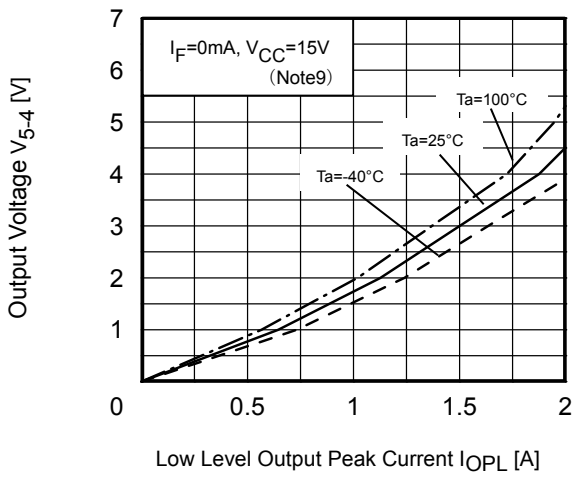
$I_{OPL} - T_a$



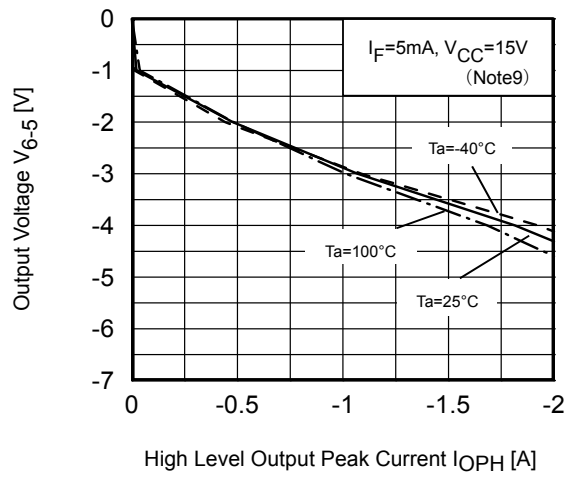
$I_{OPH} - T_a$



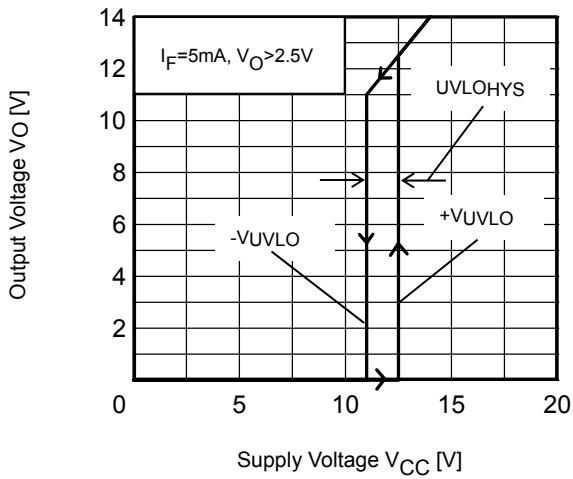
$V_{5-4} - I_{OPL}$



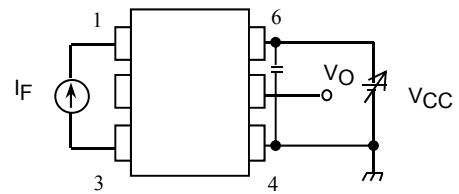
$V_{6-5} - I_{OPH}$



$V_O(V_{UVLO})^{**} - V_{CC}$



\*\*Test Circuit :  $V_O(V_{UVLO}) - V_{CC}$



\*: The above graphs show typical characteristics.

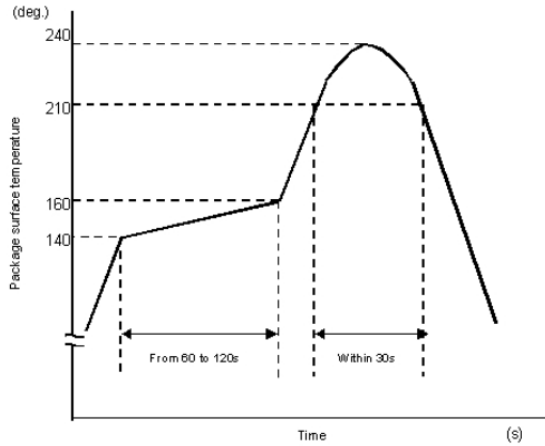


## Soldering and Storage

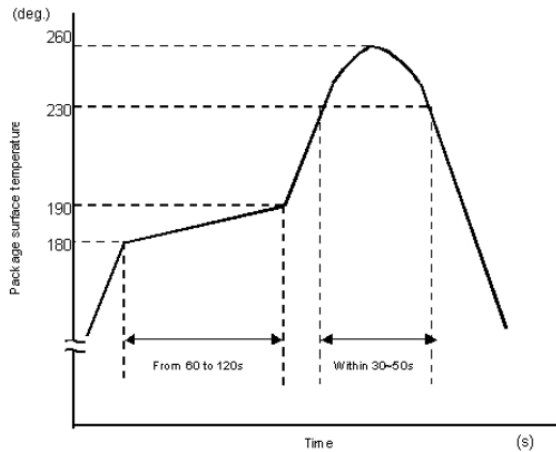
### (1) Precautions for Soldering

#### 1) When Using Soldering Reflow

- An example of a temperature profile when Sn-Pb eutectic solder is used:



- An example of a temperature profile when lead(Pb)-free solder is used:



- Reflow soldering must be performed once or twice.
- The mounting should be completed with the interval from the first to the last mountings being 2 weeks.

#### 2) When using soldering Flow (Applicable to both eutectic solder and Lead(Pb)-Free solder)

- Apply preheating of 150 °C for 60 to 120 seconds.
- Mounting condition of 260 °C or less within 10 seconds is recommended.
- Flow soldering must be performed once

#### 3) When using soldering Iron (Applicable to both eutectic solder and Lead(Pb)-Free solder)

- Complete soldering within 10 seconds for lead temperature not exceeding 260 °C or within 3 seconds not exceeding 350 °C.
- Heating by soldering iron must be only once per 1 lead

**(2) Precautions for General Storage**

- 1) Do not store devices at any place where they will be exposed to moisture or direct sunlight.
- 2) When transportation or storage of devices, follow the cautions indicated on the carton box.
- 3) The storage area temperature should be kept within a temperature range of 5 °C to 35 °C, and relative humidity should be maintained at between 45% and 75%.
- 4) Do not store devices in the presence of harmful (especially corrosive) gases, or in dusty conditions.
- 5) Use storage areas where there is minimal temperature fluctuation. Because rapid temperature changes can cause condensation to occur on stored devices, resulting in lead oxidation or corrosion, as a result, the solderability of the leads will be degraded.
- 6) When repacking devices, use anti-static containers.
- 7) Do not apply any external force or load directly to devices while they are in storage.
- 8) If devices have been stored for more than two years, even though the above conditions have been followed, it is recommended that solderability of them should be tested before they are used.

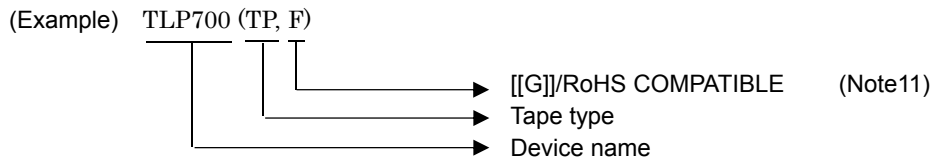
## Specifications for Embossed-Tape Packing (TP) for SDIP6 Type Photocoupler

### 1. Applicable Package

Package Name	Product Type
SDIP6	Photocouplers

### 2. Product Naming System

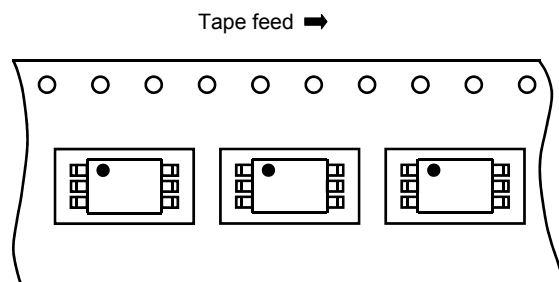
Type of package used for shipment is denoted by a symbol suffix after a product number. The method of classification is as below.



### 3. Tape Dimensions

#### 3.1 Orientation of Devices in Relation to Direction of Tape Movement

Device orientation in the recesses is as shown in Figure 1.



**Figure 1 Device Orientation**

#### 3.2 Tape Packing Quantity: 1500 devices per reel

#### 3.3 Empty Device Recesses Are as Shown in Table 1.

**Table 1 Empty Device Recesses**

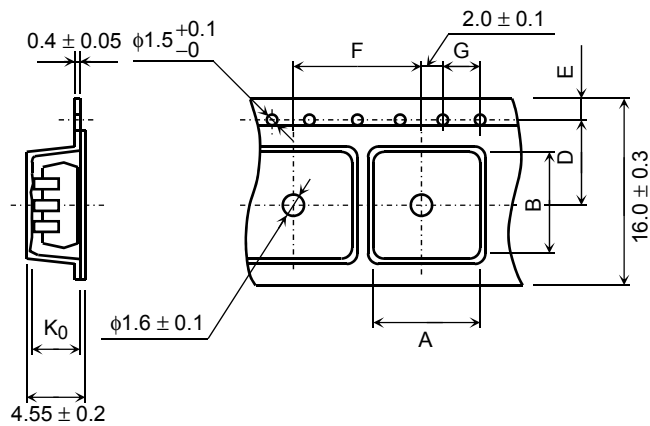
	Standard	Remarks
Occurrences of 2 or more successive empty device recesses	0	Within any given 40-mm section of tape, not including leader and trailer
Single empty device recesses	6 devices (max) per reel	Not including leader and trailer

#### 3.4 Start and End of Tape:

The start of the tape has 30 or more empty holes. The end of the tape has 30 or more empty holes and two empty turns only for a cover tape.

**3.5 Tape Specification**

- (1) Tape material: Plastic (protection against electrostatics)
- (2) Dimensions: The tape dimensions are as shown in Figure 2 and Table 2.



**Figure 2 Tape Forms**

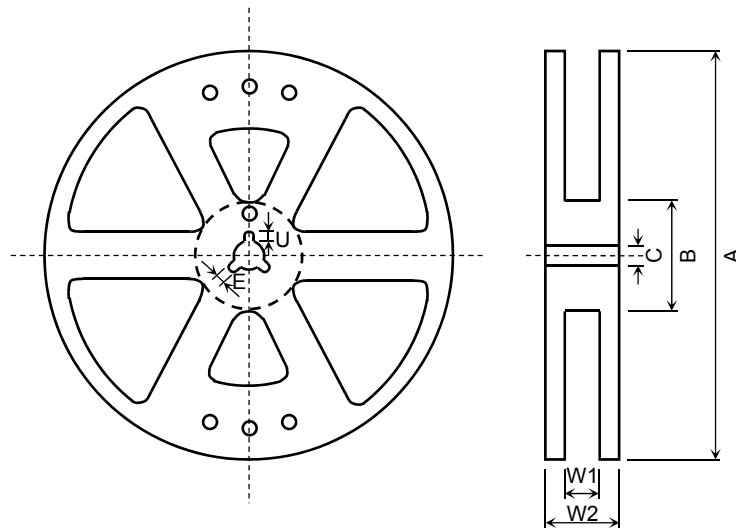
**Table 2 Tape Dimension**

Unit: mm  
Unless otherwise specified: ±0.1

Symbol	Dimension	Remark
A	10.4	—
B	5.1	—
D	7.5	Center line of indented square hole and sprocket hole
E	1.75	Distance between tape edge and hole center
F	12.0	Cumulative error $\begin{matrix} +0.1 \\ -0.3 \end{matrix}$ (max) per 10 feed holes
G	4.0	Cumulative error $\begin{matrix} +0.1 \\ -0.3 \end{matrix}$ (max) per 10 feed holes
K <sub>0</sub>	4.1	Internal space

**3.6 Reel**

- (1) Material: Plastic
- (2) Dimensions: The reel dimensions are as shown in Figure 3 and Table 3.



**Figure 3 Reel Forms**

**Table 3 Reel Dimension**

Unit: mm

記号	寸法
A	$\phi 380 \pm 2$
B	$\phi 80 \pm 1$
C	$\phi 13 \pm 0.5$
E	$2.0 \pm 0.5$
U	$4.0 \pm 0.5$
W1	$17.5 \pm 0.5$
W2	$21.5 \pm 1.0$

**4. Packing**

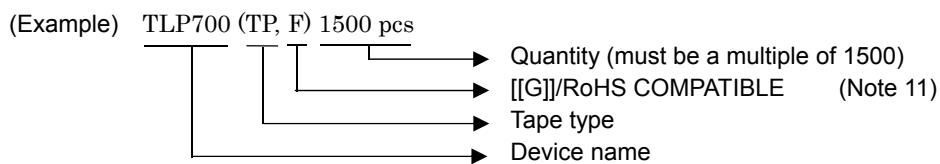
Either one reel or five reels of photocouplers are packed in a shipping carton.

**5. Label Indication**

The carton bears a label indicating the product number, the symbol representing classification of standard, the quantity, the lot number and the Toshiba company name.

**6. Ordering Method**

When placing an order, please specify the product number, the CTR rank, the tape type and the quantity as shown in the following example.

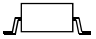
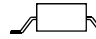


Note 11: Please contact your TOSHIBA sales representative for details as to environmental matters such as the RoHS compatibility of Product.

RoHS is the Directive 2011/65/EU of the European Parliament and of the Council of 8 June 2011 on the restriction of the use of certain hazardous substances in electrical and electronics equipment.



## Insulation Related Specifications

		 7.62mm pitch TLPxxx type	 10.16mm pitch TLPxxxF type
Minimum creepage distance	Cr	7.0mm	8.0mm
Minimum clearance	Cl	7.0mm	8.0mm
Minimum insulation thickness	ti	0.4mm	
Comperative tracking index	CTI	175	

1. If a printed circuit is incorporated, the creepage distance and clearance may be reduced below this value. (e.g.at a standard distance between soldering eye centres of 7.5mm). If this is not permissible, the user shall take suitable measures.
2. This photocoupler is suitable for 'safe electrical isolation' only within the safety limit data. Maintenance of the safety data shall be ensured by means of protective circuits.

Marking on product for EN60747 : **4**

Marking Example :

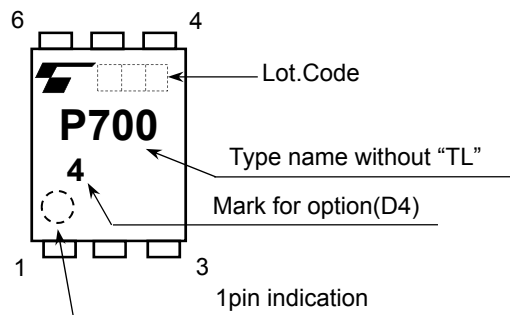


Figure 1 Partial discharge measurement procedure according to EN60747  
Destructive test for qualification and sampling tests.

Method A

(for type and sampling tests,  
destructive tests)

- $t_1, t_2$  = 1 to 10 s
- $t_3, t_4$  = 1 s
- $t_p$ (Measuring time for partial discharge) = 10 s
- $t_b$  = 12 s
- $t_{ini}$  = 60 s

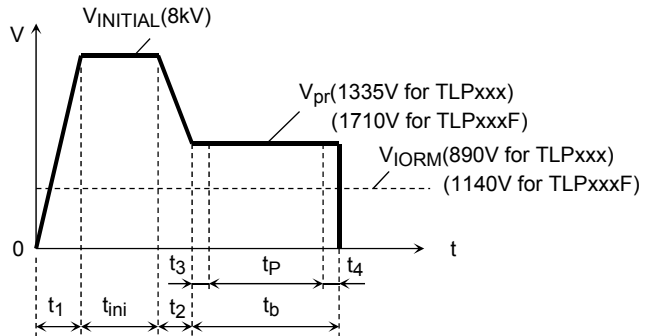


Figure 2 Partial discharge measurement procedure according to EN60747  
Non-destructive test for 100% inspection.

Method B

(for sample test, non-destructive test)

- $t_3, t_4$  = 0.1 s
- $t_p$ (Measuring time for partial discharge) = 1 s
- $t_b$  = 1.2 s

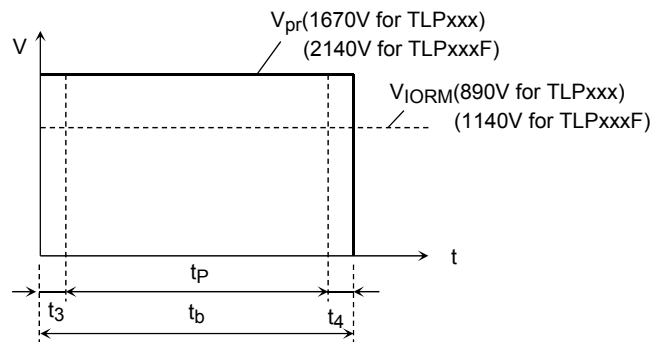
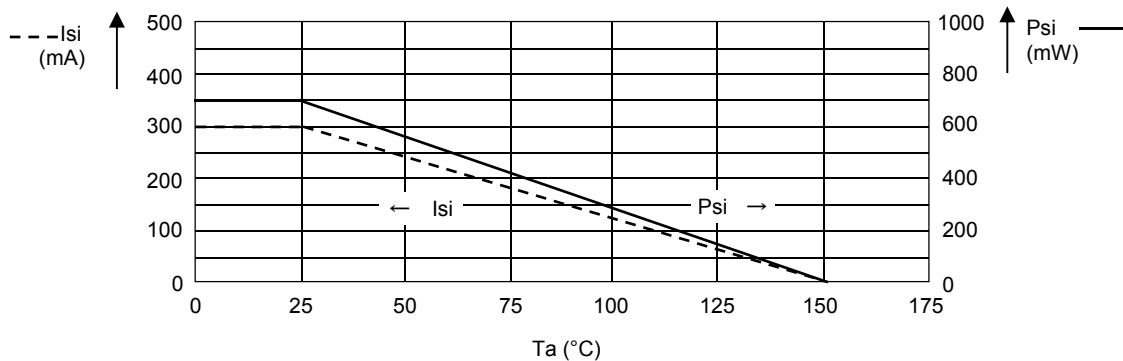


Figure 3 Dependency of maximum safety ratings on ambient temperature





## RESTRICTIONS ON PRODUCT USE

- Toshiba Corporation, and its subsidiaries and affiliates (collectively "TOSHIBA"), reserve the right to make changes to the information in this document, and related hardware, software and systems (collectively "Product") without notice.
- This document and any information herein may not be reproduced without prior written permission from TOSHIBA. Even with TOSHIBA's written permission, reproduction is permissible only if reproduction is without alteration/omission.
- Though TOSHIBA works continually to improve Product's quality and reliability, Product can malfunction or fail. Customers are responsible for complying with safety standards and for providing adequate designs and safeguards for their hardware, software and systems which minimize risk and avoid situations in which a malfunction or failure of Product could cause loss of human life, bodily injury or damage to property, including data loss or corruption. Before customers use the Product, create designs including the Product, or incorporate the Product into their own applications, customers must also refer to and comply with (a) the latest versions of all relevant TOSHIBA information, including without limitation, this document, the specifications, the data sheets and application notes for Product and the precautions and conditions set forth in the "TOSHIBA Semiconductor Reliability Handbook" and (b) the instructions for the application with which the Product will be used with or for. Customers are solely responsible for all aspects of their own product design or applications, including but not limited to (a) determining the appropriateness of the use of this Product in such design or applications; (b) evaluating and determining the applicability of any information contained in this document, or in charts, diagrams, programs, algorithms, sample application circuits, or any other referenced documents; and (c) validating all operating parameters for such designs and applications. **TOSHIBA ASSUMES NO LIABILITY FOR CUSTOMERS' PRODUCT DESIGN OR APPLICATIONS.**
- **PRODUCT IS NEITHER INTENDED NOR WARRANTED FOR USE IN EQUIPMENTS OR SYSTEMS THAT REQUIRE EXTRAORDINARILY HIGH LEVELS OF QUALITY AND/OR RELIABILITY, AND/OR A MALFUNCTION OR FAILURE OF WHICH MAY CAUSE LOSS OF HUMAN LIFE, BODILY INJURY, SERIOUS PROPERTY DAMAGE AND/OR SERIOUS PUBLIC IMPACT ("UNINTENDED USE").** Except for specific applications as expressly stated in this document, Unintended Use includes, without limitation, equipment used in nuclear facilities, equipment used in the aerospace industry, medical equipment, equipment used for automobiles, trains, ships and other transportation, traffic signaling equipment, equipment used to control combustions or explosions, safety devices, elevators and escalators, devices related to electric power, and equipment used in finance-related fields. **IF YOU USE PRODUCT FOR UNINTENDED USE, TOSHIBA ASSUMES NO LIABILITY FOR PRODUCT.** For details, please contact your TOSHIBA sales representative.
- Do not disassemble, analyze, reverse-engineer, alter, modify, translate or copy Product, whether in whole or in part.
- Product shall not be used for or incorporated into any products or systems whose manufacture, use, or sale is prohibited under any applicable laws or regulations.
- The information contained herein is presented only as guidance for Product use. No responsibility is assumed by TOSHIBA for any infringement of patents or any other intellectual property rights of third parties that may result from the use of Product. No license to any intellectual property right is granted by this document, whether express or implied, by estoppel or otherwise.
- **ABSENT A WRITTEN SIGNED AGREEMENT, EXCEPT AS PROVIDED IN THE RELEVANT TERMS AND CONDITIONS OF SALE FOR PRODUCT, AND TO THE MAXIMUM EXTENT ALLOWABLE BY LAW, TOSHIBA (1) ASSUMES NO LIABILITY WHATSOEVER, INCLUDING WITHOUT LIMITATION, INDIRECT, CONSEQUENTIAL, SPECIAL, OR INCIDENTAL DAMAGES OR LOSS, INCLUDING WITHOUT LIMITATION, LOSS OF PROFITS, LOSS OF OPPORTUNITIES, BUSINESS INTERRUPTION AND LOSS OF DATA, AND (2) DISCLAIMS ANY AND ALL EXPRESS OR IMPLIED WARRANTIES AND CONDITIONS RELATED TO SALE, USE OF PRODUCT, OR INFORMATION, INCLUDING WARRANTIES OR CONDITIONS OF MERCHANTABILITY, FITNESS FOR A PARTICULAR PURPOSE, ACCURACY OF INFORMATION, OR NONINFRINGEMENT.**
- GaAs (Gallium Arsenide) is used in Product. GaAs is harmful to humans if consumed or absorbed, whether in the form of dust or vapor. Handle with care and do not break, cut, crush, grind, dissolve chemically or otherwise expose GaAs in Product.
- Do not use or otherwise make available Product or related software or technology for any military purposes, including without limitation, for the design, development, use, stockpiling or manufacturing of nuclear, chemical, or biological weapons or missile technology products (mass destruction weapons). Product and related software and technology may be controlled under the applicable export laws and regulations including, without limitation, the Japanese Foreign Exchange and Foreign Trade Law and the U.S. Export Administration Regulations. Export and re-export of Product or related software or technology are strictly prohibited except in compliance with all applicable export laws and regulations.
- Please contact your TOSHIBA sales representative for details as to environmental matters such as the RoHS compatibility of Product. Please use Product in compliance with all applicable laws and regulations that regulate the inclusion or use of controlled substances, including without limitation, the EU RoHS Directive. **TOSHIBA ASSUMES NO LIABILITY FOR DAMAGES OR LOSSES OCCURRING AS A RESULT OF NONCOMPLIANCE WITH APPLICABLE LAWS AND REGULATIONS.**