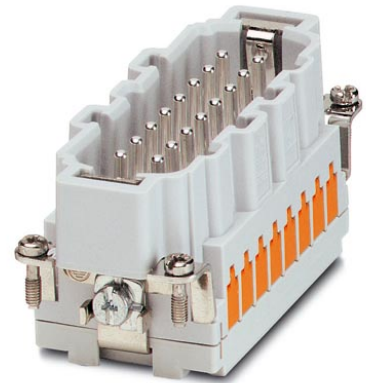



## HC-B 16-ESTQ-2,5

Order No.: 1605637

<http://eshop.phoenixcontact.de/phoenix/treeViewClick.do?UID=1605637>

HEAVYCON male insert, B16 series, 16-pos., QUICKON connection

### Commercial data

|                          |   |
|--------------------------|---|
| GTIN (EAN)               | <br>4 017918 940720 |
| sales group              | D000  |
| Pack                     | 10 pcs.   |
| Customs tariff           | 85369010  |
| Catalog page information | Page 431 (PC-2009)  |

### Product notes

WEEE/RoHS-compliant since:  
12/01/2005

<http://www.download.phoenixcontact.com>  
Please note that the data given here has been taken from the online catalog. For comprehensive information and data, please refer to the user documentation. The General Terms and Conditions of Use apply to Internet downloads.

### Technical data

#### General data

|                                 |   |
|---------------------------------|---|
| Note                            | For HEAVYCON ADVANCE and HEAVYCON housing of B16 type. Coding using the CP-HC (1686478) keying profile. HC-B6.../ HC-B10... for two keying profiles. HC-B16.../ HC-B24... for 4 keying profiles. Connectors may be operated only when there is no load/voltage. |
| Connection method               | QUICKON connection  |
| Ambient temperature (operation) | -40 °C ... 125 °C (including heating up of contacts)  |

|   |  |
|---|--|
| Ambient temperature (assembly)  | -25 °C ... 50 °C   |
| Pollution degree  | 3  |
| Surge voltage category  | III  |
| Number of positions   | 16   |
| Insertion/withdrawal cycles   | ≥ 500  |
| Design  | B16  |
| Conductor cross-section   | 0.34 mm <sup>2</sup> ... 2.5 mm <sup>2</sup>   |
| Connection cross-section AWG  | 22 ... 14  |
| Wire diameter including insulation                                    | 1 mm ... 3.5 mm  |
| Frequency of connections between conductors of the same cross section | 10   |
| Assembly instructions   | If the conductor is to be reconnected, it must be cut off above the last contact point.      |
| Connection  | For housings of type B16/B32. Connectors may only be actuated when there is no load/voltage. |

#### Material data

|                                    |              |
|------------------------------------|--------------|
| Inflammability class acc. to UL 94 | V0           |
| Contact material                   | Copper alloy |
| Contact surface material           | Ag           |
| Contact carrier material           | PA           |
| Material wire insulation           | PVC / PE     |

#### Electrical characteristics

|                       |       |
|-----------------------|-------|
| Rated voltage (III/3) | 400 V |
| Rated surge voltage   | 6 kV  |
| Rated current         | 16 A  |

#### Certificates / Approvals



Certification

CSA, CUL, UL

## Accessories

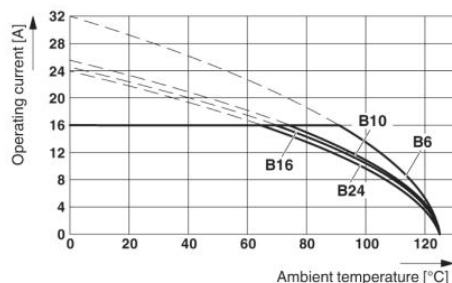
| Item           | Designation         | Description   |
|----------------|---------------------|---|
| <b>General</b> |                     |   |
| 1586138        | HC-B 16-ANDOCK      | Docking frame for racks, for contact inserts of B16 type, with four M5 flat headed screws, rack balance x/y axis +/- 1.5 mm |
| 1660449        | HC-B 24-ADP-B 16-GY | HEAVYCON adapter plate, type B24 on B16, for panel cutouts of type B24, gray  |
| 1644326        | HC-B-3PE            | PE multiplier, for three PE connections, for HC-B (besides HC-B..E..ZZ) / HC-BB / HC-DD / HC-D40 / HC-D64 contact inserts   |
| 1604997        | HC-B-PES            | PE screw, for contact inserts HC-B / HC-BB / HC-DD / HC-D40 / HC-D64  |
| 1685327        | HC-B-ZG             | Strain relief clamps contact inserts of series: B-, BB-, D 40, D 64, DD and HV, straight cable exit                         |
| 1685330        | HC-B-ZS             | Strain relief clamps contact inserts of series: B-, BB-, D 40, D 64, DD and HV, lateral cable exit                          |
| 1772722        | HC-CB               | Coding pin, prevents mismating of up to six plug connectors with an identical number of positions                           |
| 1676860        | HC-CBU              | Keying socket for coding up to 16 plug connectors   |
| 1676857        | HC-CST              | Keying peg for coding up to 16 plug connectors  |
| 1660973        | HC-SMP 125-B16-AMQ  | HEAVYCON connector assembly frame with panel mounting base with double locking latch, for contact inserts of type B16       |
| 1687972        | HC-SMR-B16          | HEAVYCON connector assembly frame, for contact inserts of type B16  |

## Plug/Adapter

|         |       |  |
|---------|-------|--|
| 1686478 | CP-HC | Keying profile, 4-section, for pushing into the keying grooves |
|---------|-------|--|

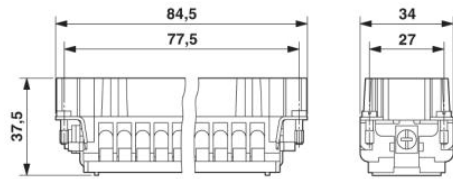
## Diagrams/Drawings

### Diagram

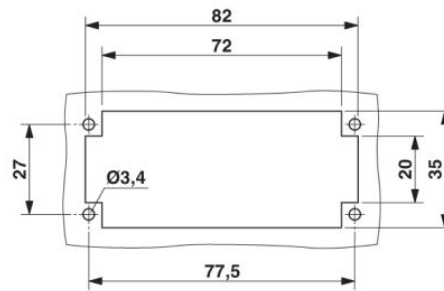


The illustration shows the derating diagram of various series B contact inserts (B6 to B24), conductor cross section 2.5 mm<sup>2</sup>

Dimensioned drawing



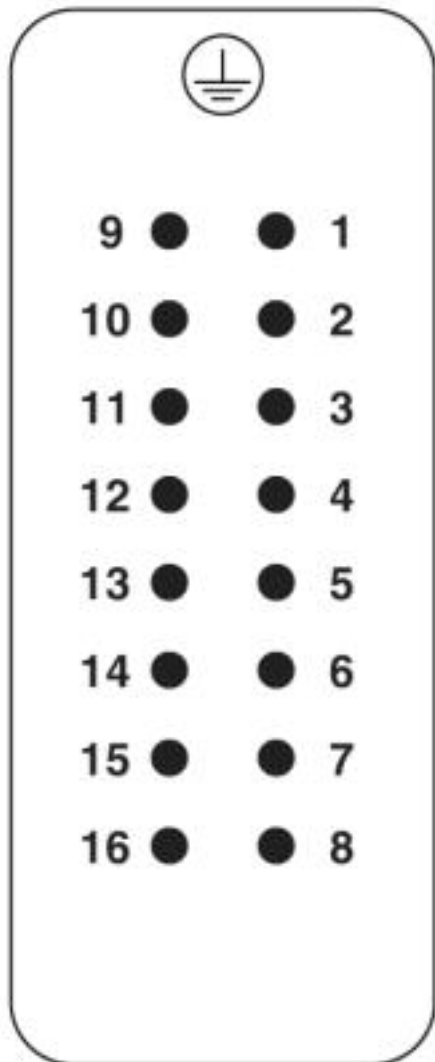
Male insert



Panel cutout

Schematic diagram

Connector pin assignment, connection side



**Address**

PHOENIX CONTACT Deutschland GmbH  
Flachmarktstr. 8  
32825 Blomberg, Germany  
Phone +49 5235 3 12000  
Fax +49 5235 3 41200  
<http://www.phoenixcontact.de>



© 2010 Phoenix Contact  
Technical modifications reserved;