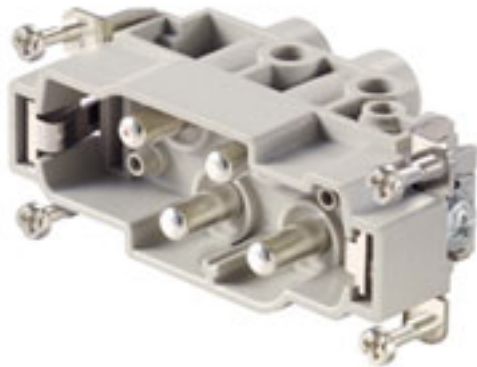


HDC insert HDC S4/0 MS

Weidmüller Interface GmbH & Co. KG
 Klingenbergstraße 16
 D-32758 Detmold
 Germany
 Fon: +49 5231 14-0
 Fax: +49 5231 14-292083
 www.weidmueller.com



The MixMate series of connectors can simultaneously transmit high rated currents and voltages as well as signals.

The wire connection level is designed as a screw element. All screw connections are equipped with a wire protection spring.>br> Screw connection

General ordering data

Order No.	1023220000
Type	HDC S4/0 MS
Version	HDC insert, Male, 830 V, 80 A, No. of poles: 4, Screw connection, Size: 6
GTIN (EAN)	4032248739295
Qty.	1 pc(s).

**HDC insert
HDC S4/0 MS**

Weidmüller Interface GmbH & Co. KG
 Klingenbergstraße 16
 D-32758 Detmold
 Germany
 Fon: +49 5231 14-0
 Fax: +49 5231 14-292083
 www.weidmueller.com

Technical data**Dimensions and weights**

Length	84.5 mm	Width	34 mm
Height	42 mm	Net weight	109 g

Dimensions

Height of plug	42 mm	Total length base	84.5 mm
----------------	-------	-------------------	---------

General data

Size	6	Series	MixMate
Rated voltage (DIN EN 61984)	830 V	Rated voltage according to UL/CSA	600 V AC/DC
Rated impulse voltage (DIN EN 61984)	8 kV	Rated current (DIN EN 61984)	80 A
UL 94 flammability rating	V-0	Insulating material group	IIIa
Insulation resistance	10 ¹⁰ Ω	Insulating material	PC glass-fibre reinforced (UL-listed and railway-certified)
Conductor cross-section	16 mm ²	No. of poles	4
Plugging cycles, silver	≥ 500	Pollution severity	3
Type	Male		

Connection data PE

Stripping length PE connection	13 mm	Wire connection cross-section, finely stranded, min.	0.5 mm ²
Wire connection cross section, finely stranded, max.	16 mm ²	Cross-section for connected conductor, finely stranded with wire-end ferrules and plastic collars DIN 46228/4, rated connection, min.	0.5 mm ²
Wire connection cross-section, finely stranded with wire-end ferrules and plastic collars DIN 46228/4, rated connection, max.	16 mm ²	Wire connection cross section AWG, min.	AWG 16
Wire connection cross section AWG, max.	AWG 6	Wire cross-section, solid, min.	0.5 mm ²
Wire cross-section, solid, max.	16 mm ²	Connection type PE	Screw connection
Tightening torque, min. PE connection	2 Nm	Tightening torque, max. PE connection	2.5 Nm
Rated cross-section	16 mm ²	Fixing screw	M 5
Blade size, crosshead	Gr. PH2	Blade size, slotted (PE connection)	SD 1.2 x 6.5

Rating data

Rated current (DIN EN 61984)	80 A	Rated impulse voltage (DIN EN 61984)	8 kV
Rated voltage (DIN EN 61984)	830 V	Rated voltage according to UL/CSA	600 V AC/DC

Version

Wire connection cross section AWG, min.	AWG 16	Wire connection cross section AWG, max.	AWG 6
Stripping length, rated connection	15 mm	Type of connection	Screw connection
Min. torque for main contact	1.2 Nm	Max. torque for main contact	3 Nm
Size	6	Volume resistance	≤ 1 mΩ
Clamping screw	M 6	Blade size, slotted (screw connection)	SD 0.8 x 4.0
Surface finish	Silver passivated	Material	Copper alloy

Data sheet...

**HDC insert
HDC S4/0 MS**

Weidmüller Interface GmbH & Co. KG
 Klingenbergstraße 16
 D-32758 Detmold
 Germany
 Fon: +49 5231 14-0
 Fax: +49 5231 14-292083
 www.weidmueller.com

Technical data

Classifications

ETIM 3.0	EC002413	UNSPSC	30-21-18-01
eClass 6.2	27-26-12-90	eClass 7.1	27-44-02-90

Product information

Descriptive text accessories	Accessories, see chapter J - Tools, see chapter K
------------------------------	---

Approvals

Approvals



ROHS	Conform
------	---------

Data sheet...

**HDC insert
HDC S4/0 MS**

Weidmüller Interface GmbH & Co. KG
Klingenbergstraße 16
D-32758 Detmold
Germany
Fon: +49 5231 14-0
Fax: +49 5231 14-292083
www.weidmueller.com

Drawings

