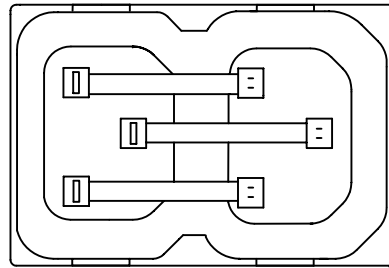
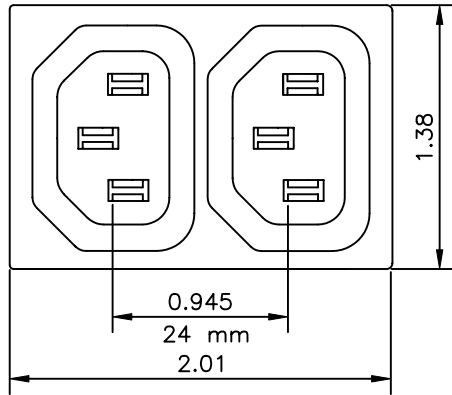
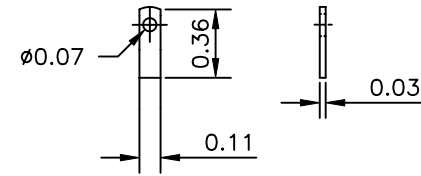


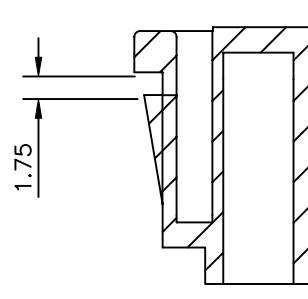
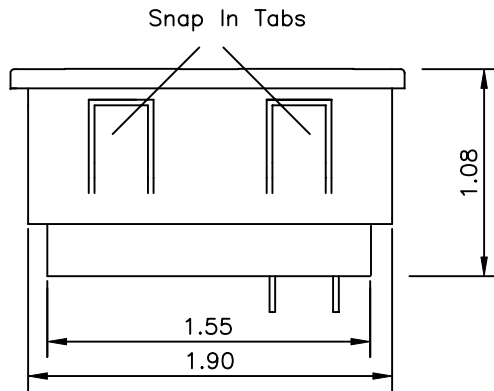
| Revision |             |          |
|----------|-------------|----------|
| Rev.     | Description | Approved |
|          |             |          |
|          |             |          |



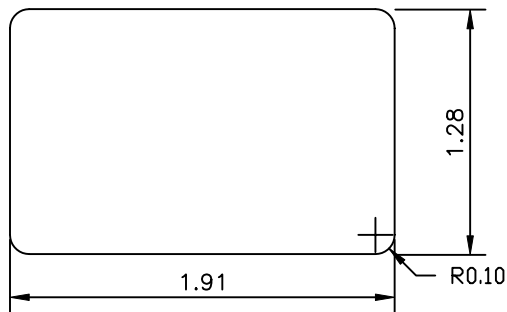
BOTTOM VIEW



Solder Tab Type 1



Rating: 10A/15A 250V AC  
 APPROVAL: VDE, SEV, DEMKO, NEMKO, SEMKO  
 FIMKO, UL,CSA



PANEL CUT-OUT

|                |                    |   |              |               |
|----------------|--------------------|---|--------------|---------------|
| Dim range (mm) | Tolerance +/- (mm) | Qualtek Electronics Corp.<br>PPC DIVISION |              |               |
|                |                    | Part Number: 742W-15/03                   |              |               |
| 0-1            | 0.15               | Description:<br>2 POSITION OUTLET         |              |               |
| 1-6            | 0.20               |   |              |               |
| 6-18           | 0.30               |   |              |               |
| 18-50          | 0.50               |   |              |               |
| 50-120         | 0.70               | Drawn/Date                                | Checked/Date | Approved/Date |
| 120-250        | 0.90               | B.ZHANG                                   | 01-22-03     | JJH/01-22-03  |
| 250-500        | 1.20               | 01-22-03                                  |              |               |