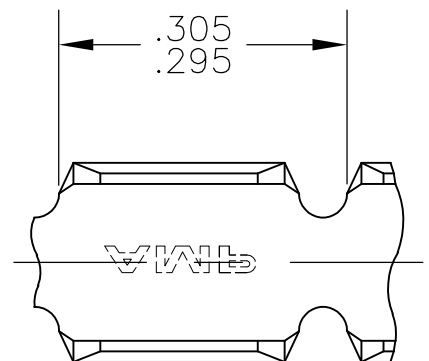
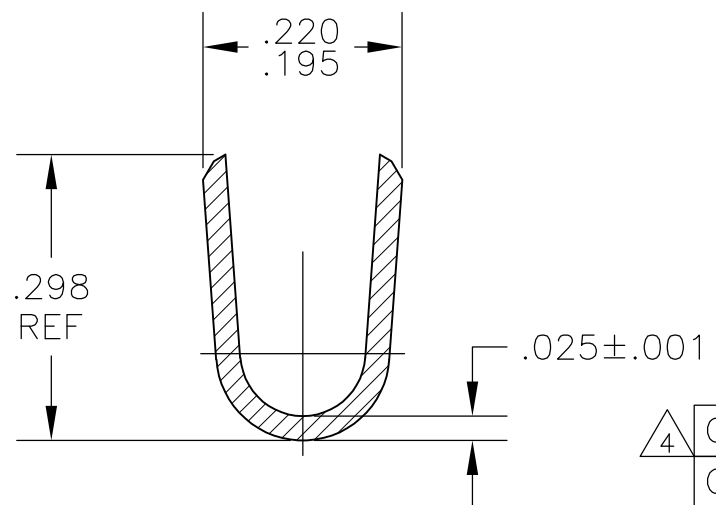
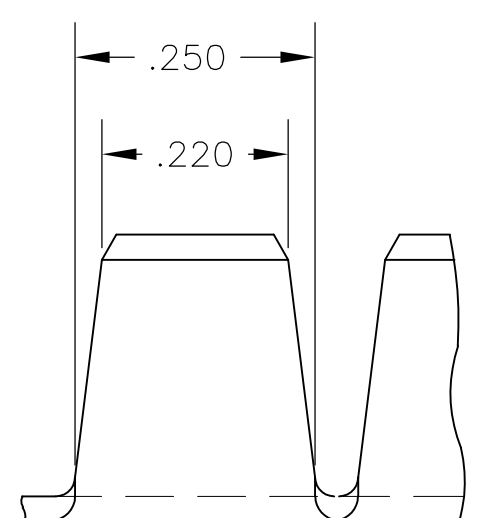


THIS DRAWING IS UNPUBLISHED. RELEASED FOR PUBLICATION
 © COPYRIGHT BY TYCO ELECTRONICS CORPORATION. ALL RIGHTS RESERVED.

LOC	DIST	REVISIONS					
		P	LTR	DESCRIPTION	DATE	DWN	APVD
AF	50		P1	ECR-07-001426(REDRAWN IN AUTOCAD)	13DEC06	HMR	GP
			P2	REVISED PER ECO-09-021826	07SEP09	KK	AEG



- 1 CONTINUOUS STRIP ON REELS.
- 2 WIRE RANGE: 12,000 TO 18,000 CMA
- △3 FOREIGN PRODUCTION ONLY.
- △4 OBSOLETE PARTS: OBSOLETE CIS STREAMLINING PER D.RENAUD/D.SINISI



△4	OBSOLETE	NONE	TEMPER A ST. STEEL	60997-5
	OBSOLETE	.000080 MIN TIN	TEMPER 3 C.R. STEEL	60997-4
△4	OBSOLETE	.000150 MIN NICKEL	TEMPER 3 C.R. STEEL	60997-3
△3	OBSOLETE	.000080 MIN TIN	082 BRASS	60997-2
		NONE	082 BRASS	60997-1
		FINISH	MATERIAL	PART NO

THIS DRAWING IS A CONTROLLED DOCUMENT.		DWN RAGHAVENDRA 13DEC06	Tyco Electronics Corporation Harrisburg, Pa 17105-3608		
DIMENSIONS: INCHES		CHK G.D.PORTA 04JAN07	NAME		
TOLERANCES UNLESS OTHERWISE SPECIFIED:		APVD G.D.PORTA 04JAN07	PRODUCT SPEC		
0 PLC ± - 1 PLC ± - 2 PLC ± - 3 PLC ± .010 4 PLC ± - ANGLES ± -		APPLICATION SPEC		SPLICE	
MATERIAL SEE TABLE	FINISH SEE TABLE	WEIGHT -	SIZE A3	CAGE CODE 00779	DRAWING NO G-60997
CUSTOMER DRAWING			RESTRICTED TO -	SCALE 5:1	SHEET 1 OF 1
			REV P2		