



Quick Start Guide

TransPort® WR44 RR



Welcome to your Digi product

Get started: This guide helps you with initial product setup. Need more? Find additional supporting material for this product at www.digi.com/support/transportwr44RR. Or connect to the online documentation by scanning this code:



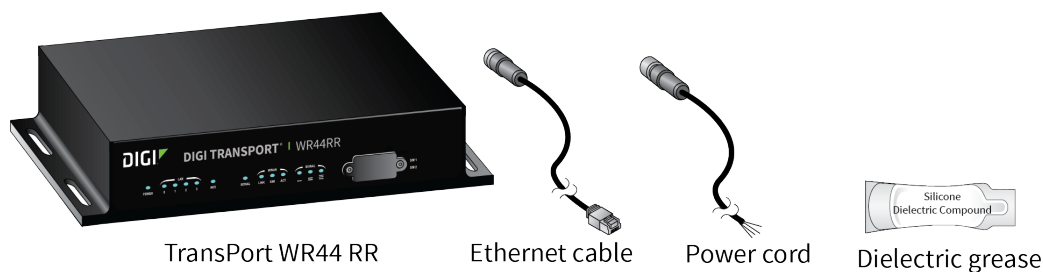
Digi Technical Support: Digi offers multiple support plans to help you get the most out of your product. For information on Technical Support plans and pricing, contact us at 877.912.3444 or visit www.digi.com/support.

Documentation feedback: To provide feedback on this documentation, send your comments to techcomm@digi.com.

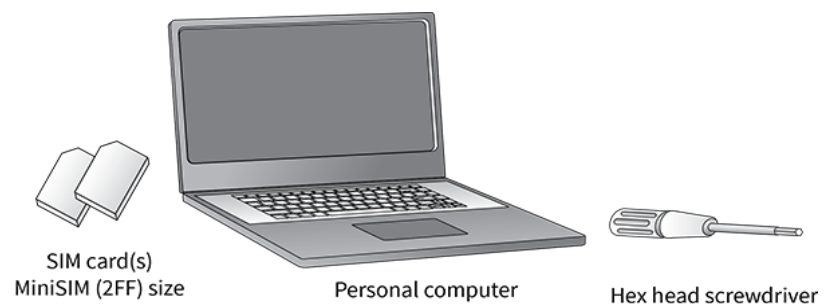
1 Verify your components

Depending on model and configuration, your box may contain additional cables or antennas. Note that you may require one or more external antennas for your model and application.

Included equipment



Required additional equipment



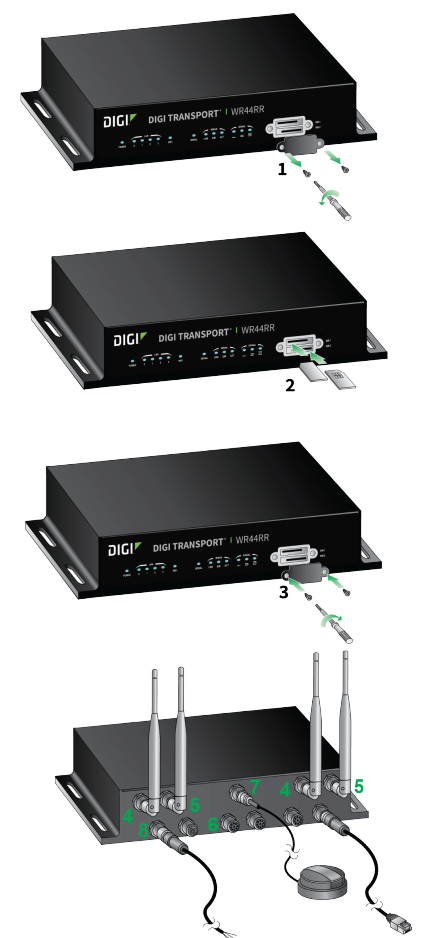
Verify that you have all included equipment. If any item is missing or damaged, contact your supplier.

2 Connect the hardware

1. Using a screwdriver, remove the SIM slot cover.
2. Insert SIM card(s) into SIM sockets. For **SIM 1**, the contacts should be face down. For **SIM 2**, the contacts should be face up. In both cases, insert the end of the SIM card with the chamfered corner first.

Note Devices used in environments with high vibration levels can experience unexpected SIM card failure (contact fretting). We highly recommend that you apply a thin layer of dielectric grease to the SIM contacts prior to insertion.

3. To meet environmental specifications, after installing the SIM cards, re-attach the TransPort WR44 RR SIM cover.
4. Connect the cellular antennas (not included) to the **WWAN PRIMARY** connector on the unit. If the unit is equipped with a secondary cellular antenna, connect it to the **WWAN SECONDARY** connector.
5. **Wi-Fi models only:** Connect the Wi-Fi antennas (not included) to the **WIFI PRIMARY** and **WIFI SECONDARY** antenna connectors.
6. Connect one end of the Ethernet cable to the **LAN 0** port on the unit and the other end to a LAN port on a PC.
7. **GPS models only:** Connect the GPS antenna (not included) to the GPS antenna connector.
8. Connect the power cord. Connect the M12 connector end of the cord to the 9-36VDC connector on the device, and wire the four bare wires according to your needs. The brown and blue wires provide basic DC power input, and the black and white wires are GPIO signal lines.
 - Pin 1: Power +ve (Brown)
 - Pin 2: GPIO 0 (White)
 - Pin 3: Power -ve (Blue)
 - Pin 4: GPIO 1 (Black)



Tip

- Tighten the **Ethernet, Serial** and **Power** M12 connectors to a torque of 0.6Nm (5.3 lbs).
- Tighten the **WWAN, Wi-Fi** and **GPS** antenna TNC connectors to a torque of 1.5Nm (13.3 lbs).
- The Digi TransPort WR44 RR is designed for indoor and outdoor use. Mount the unit in a position to allow access to the cables on the rear panel.

3 Run the Getting Started Wizard

To use your Digi TransPort WR44 RR, you must first activate the device with your cellular carrier. This process involves supplying the carrier with the MEID number from your device, which is printed on the bottom of the router.

If your PC is configured to automatically get an IP address, it can get an IP address from the TransPort WR44 RR. Otherwise, make sure your PC can connect to the network **192.168.1.0 (255.255.255.0)**.

1. Enter **192.168.1.1** into the address bar of the web browser.
2. The first page of the Getting Started Wizard appears. This wizard guides you through initial configuration of your TransPort device. Note the default username and password to log in to the TransPort device are **username** and **password**.
 - To run the wizard, click **Get Started**.
 - To manually configure the TransPort device, click **Skip Wizard**.

4 View the TransPort LEDs and startup states

- **POWER LED:**

Off: No power

Green: TransPort device is powered

- **LAN LED:** Illuminates steady when there is a network connection to the LAN port and flashes when data is transmitted or received.
- **WIFI LED (Wi-Fi models only):** Illuminates steady if Wi-Fi activity is present.
- **SERIAL LED:** Illuminates steady if a terminal is connected to the **SERIAL** port and the DTR signal is on. Flashes when data is being transmitted or received.
- **LINK LED:** Illuminates steady when a wireless WAN data connection has been established.
- **SIM LED:** Illuminates steady when a valid SIM card is installed.
- **ACT LED:** Flashes to indicate that data is being transferred over the wireless WAN network.
- **SIGNAL LEDs:** Indicate the strength of the cellular signal.
 - 3 LEDs: Excellent
 - 2 LEDs: Good
 - 1 LED: Fair
 - 0 LEDs: Poor or no signal



After the Getting Started Wizard completes, the TransPort web interface appears. For additional configuration, use the web interface and refer to the *Digi TransPort User Guide* and Application Notes on the Digi website at www.digi.com/support/transportwr44RR.