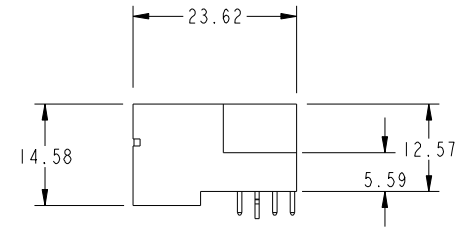
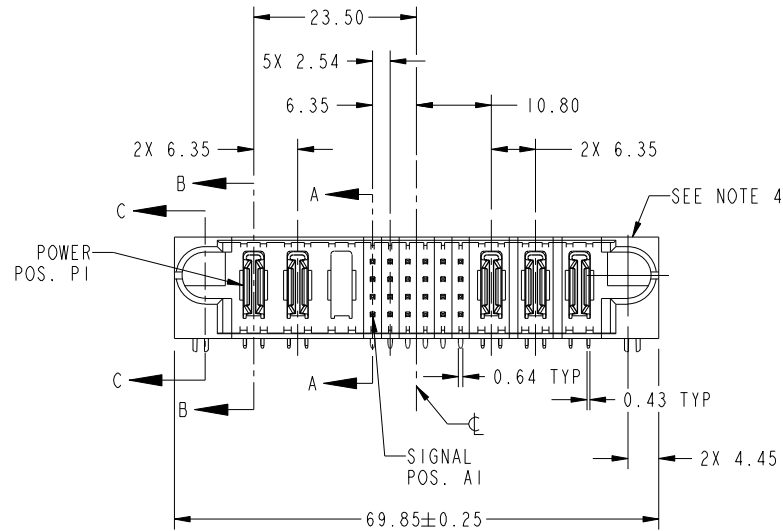
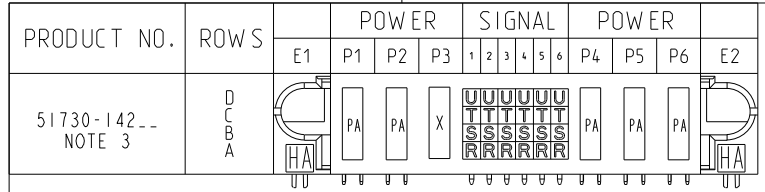


Tous droits strictement réservés. Reproduction ou communication a des tiers interdite sous quelque forme que ce soit sans autorisation écrite du propriétaire. Propriété de c FCI. Droits de reproduction FCI.



All rights strictly reserved. Reproduction or issue to third parties in any form whatever is not permitted without written authority from the proprietor. Property of FCI. Copyright FCI.



CODE	DIM "M" MATING LENGTH	CONTACT TYPE
PA	[N/A]	POWER
HA	[N/A]	HOLD-DOWN
R	[6.86]	SIGNAL
S	[6.86]	SIGNAL
T	[6.86]	SIGNAL
U	[6.86]	SIGNAL
X	OMITTED	

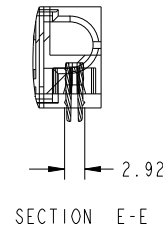
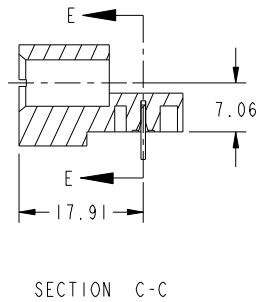
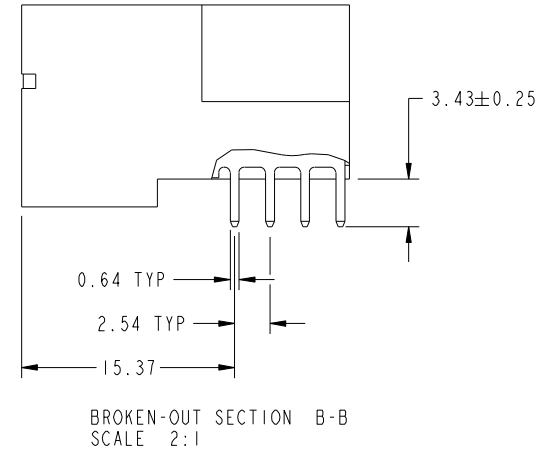
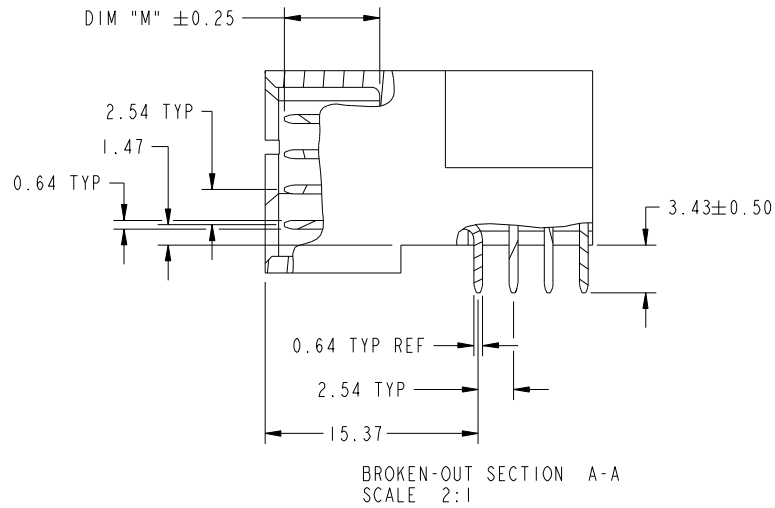
mat'l code		SEE NOTE 2			tolerances unless otherwise specified		CUSTOMER		 www.fciconnect.com	
ltr	ecn no.	dr	date	linear	0.X ± 0.3	COPY		title		
A	DG08-0032	SH	02/01/08	angles	0.XX ± 0.13	projection		3P + 24S + 3P		
					0.XXX ± 0.051			RIGHT ANGLE SOLDER HEADER		
				dr	0° ± 2°			product family		code
				enrg	Sincere He 01/21/08			PwrBlade		213
				chr	Sincere He 01/21/08	scale		dwg no		sheet
				appd	Gary Hsieh 01/21/08	1:1		51730-142		1 of 4
					Joseph Hsia 01/21/08					
sheet index	revision sheet	A	A	A	A					
		1	2	3	4					
								cage code		22526

Tous droits strictement reserves. Reproduction ou communication a des tiers interdite sous quelque forme que ce soit sans autorisation écrite du propriétaire. Propriete de c FCI. Droits de reproduction FCI.

All rights strictly reserved. Reproduction or issue to third parties in any form whatever is not permitted without written authority from the proprietor. Property of FCI. Copyright FCI.



PRODUCT NUMBER  
51730-142--  
NOTE: 3



mat'l code		SEE NOTE 2		tolerances unless otherwise specified		CUSTOMER		FCI	
ltr	ecn no.	dr	date	linear	0.X ±0.3	COPY		www.fciconnect.com	
A					0.XX ±0.13	projection		title	
				angles	0.XXX ±0.051			3P + 24S + 3P RIGHT ANGLE SOLDER HEADER	
				dr	Sincere He 01/21/08	MIM		product family	PwrBlade
				enr	Sincere He 01/21/08			size	code
				chr	Gary Hsieh 01/21/08	scale		dwg no	213
				appd	Joseph Hsia 01/21/08	1:1		A	51730-142
sheet index	revision sheet							sheet	2 of 4

cage code 22526

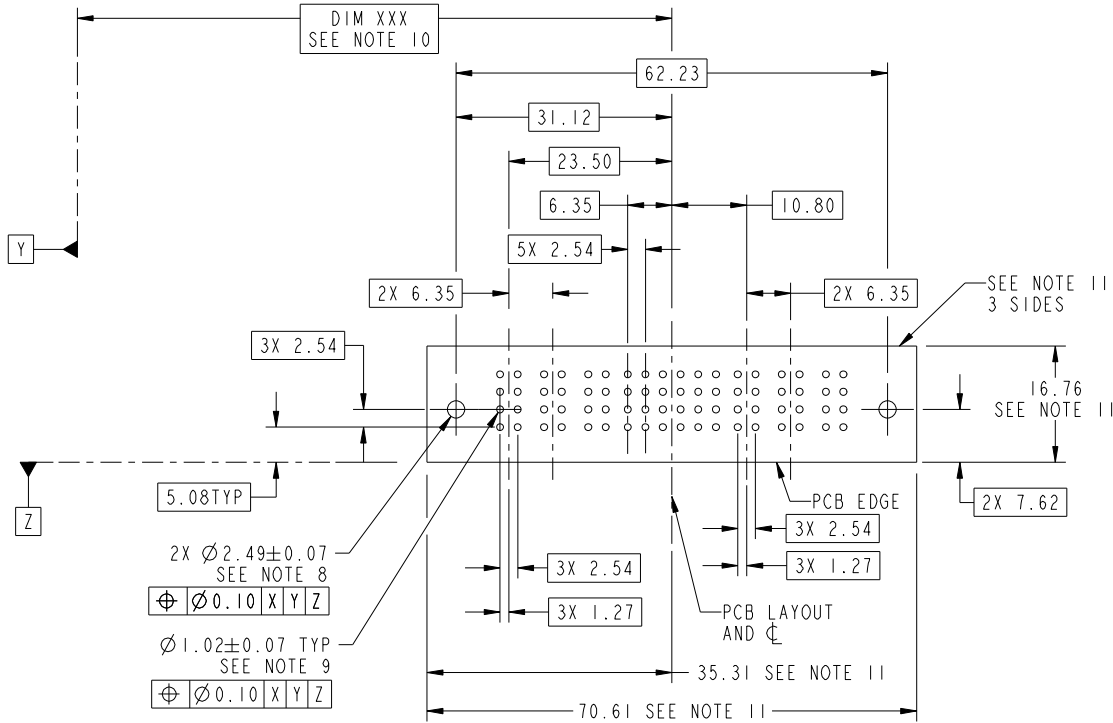
Pro/E

Tous droits strictement reserves. Reproduction ou communication a des tiers interdite sous quelque forme que ce soit sans autorisation écrite du propriétaire. Propriete de c FCI. Droits de reproduction FCI.



All rights strictly reserved. Reproduction or issue to third parties in any form whatever is not permitted without written authority from the proprietor. Property of FCI. Copyright FCI.

PRODUCT NUMBER  
51730-142\_\_  
NOTE: 3



RECOMMENDED PCB LAYOUT

mat'l code				SEE NOTE 2		tolerances unless otherwise specified		CUSTOMER		 www.fciconnect.com	
ltr	ecn no.	dr	date	linear	0.X ± 0.3		COPY		 title 3P + 24S + 3P RIGHT ANGLE SOLDER HEADER	product family PwrBlade code 213	
A					0.XX ± 0.13		projection			size dwg no 51730-142 sheet 3 of 4	
					0.XXX ± 0.051		 scale 1:1				
				angles	0° ± 2°						
				dr	Sincere He	01/21/08					
				enr	Sincere He	01/21/08					
				chr	Gary Hsieh	01/21/08					
				appd	Joseph Hsia	01/21/08					
sheet index		revision sheet									

Pro/E

cage code 22526

Tous droits strictement reserves. Reproduction ou communication a des tiers interdite sous quelque forme que ce soit sans autorisation écrite du propriétaire. Propriete de c FCI. Droits de reproduction FCI.



All rights strictly reserved. Reproduction or issue to third parties in any form whatever is not permitted without written authority from the proprietor. Property of FCI. Copyright FCI.

PRODUCT NUMBER  
51730-142--  
NOTE: 3

NOTES:

1. DIMENSIONS AND TOLERANCES ARE IN ACCORDANCE WITH ASME Y14.5M, 1994 UNLESS OTHERWISE SPECIFIED.

CONNECTOR NOTES:

- 2. HOUSING MATERIAL: UL 94 V-0 GLASS FILLED  
HIGH-TEMP THERMOPLASTIC  
POWER CONTACT MATERIAL: COPPER ALLOY  
SIGNAL PIN MATERIAL: COPPER ALLOY
- 3. 51730-142; 51730-142LF PLATING SPEC. SEE PRINT:10064183
- 4. MANUFACTURER'S NAME, P/N, AND DATE CODE TO APPEAR ON THIS SURFACE.
- 5. PRODUCT SPECIFICATION GS-12-149.  
APPLICATION SPECIFICATION BUS-20-067.
- 6. PACKAGED IN TRAYS.

PCB NOTES:

- 7. ALL HOLE DIAMETERS ARE FINISHED HOLE SIZE.
- 8. MOUNTING HOLES, WHERE APPLICABLE, ARE UNPLATED.
- 9.  $\varnothing 1.151 \pm 0.025$  DRILLED HOLES PLATED WITH  
0.008 MIN SnPb OR Sn OVER 0.03  
TO 0.08 Cu PLATING TO ACHIEVE  
 $\varnothing 1.02 \pm .07$  HOLE.
- 10. "DIM XXX" TO BE DETERMINED BY THE CUSTOMER.
- 11. CONNECTOR KEEP-OUT ZONE.

mat'l code				SEE NOTE 2		tolerances unless otherwise specified		CUSTOMER		FCI		www.fciconnect.com	
ltr	ecr no.	dr	date	linear	0.X ± 0.3		COPY		projection	title			
A					0.XX ± 0.13		MIM			3P + 24S + 3P RIGHT ANGLE SOLDER HEADER			
					0.XXX ± 0.051		←			product family PwrBlade code 213			
				angles	0° ± 2°		scale		size		sheet		
				dr	Sincere He	01/21/08	1:1		A		4 of 4		
				enr	Sincere He	01/21/08							
				chr	Gary Hsieh	01/21/08							
				appd	Joseph Hsia	01/21/08							
sheet index		revision sheet											

cage code 22526

Pro/E