

DESCRIPTION: STRAIGHT, SNAP TOGETHER - METALIZED PLASTIC

SPECIFICATIONS:

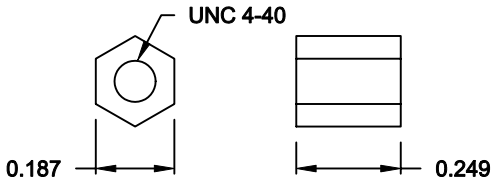
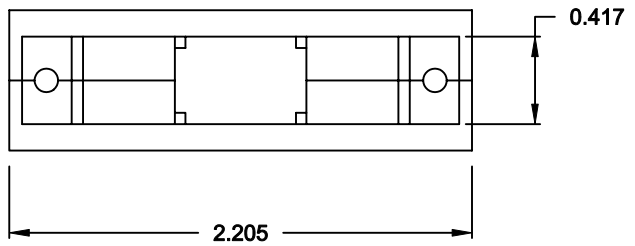
MATERIAL: A.B.S. UL94-HB
 PLATING: NICKEL OVER COPPER

BACKSHELL KIT INCLUDES:

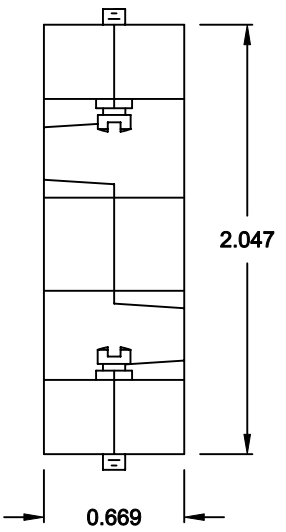
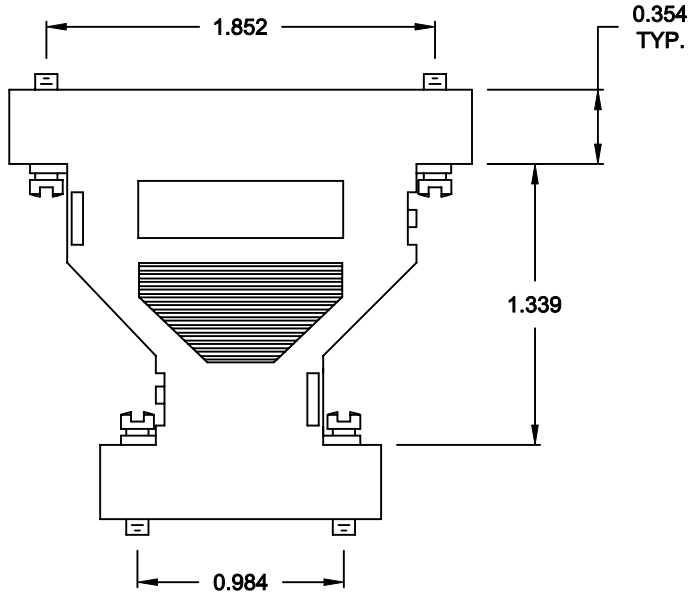
- (2) BACKSHELL HALVES
- (4) JACKSCREWS

NOTE:

- 1. IF REQUIRED, COUPLING FOR FEMALE CONNECTOR, P/N 160-000-006R032, MUST BE ORDERED SEPARTELY

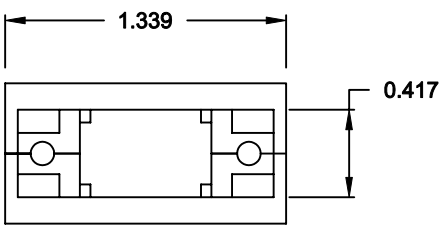


SEE NOTE 1.



957-925-020R121

SERIES _____
 POSITIONS _____
 009 _____
 025 _____
 MATERIAL _____
 020 = METALIZED PLASTIC
 RoHS COMPLIANT _____
 COLOR _____
 12 = METAL(IZED)
 PUT-UP _____
 1 = KIT



DO NOT SCALE FROM DRAWING



THESE DRAWINGS AND SPECIFICATIONS ARE THE PROPERTY OF NorComp AND SHALL NOT BE REPRODUCED, COPIED OR USED AS THE BASIS FOR THE MANUFACTURE OF SALE OF APPARATUS WITHOUT WRITTEN PERMISSION.

DRAWN: C. SMITH	DATE: 05-11-07
CHECKED:	DATE:

NorComp

SCALE: 1:1	SHEET 1	OF 1	REV 0
DWG NO. 957-925-020R121			

RoHS COMPLIANT