

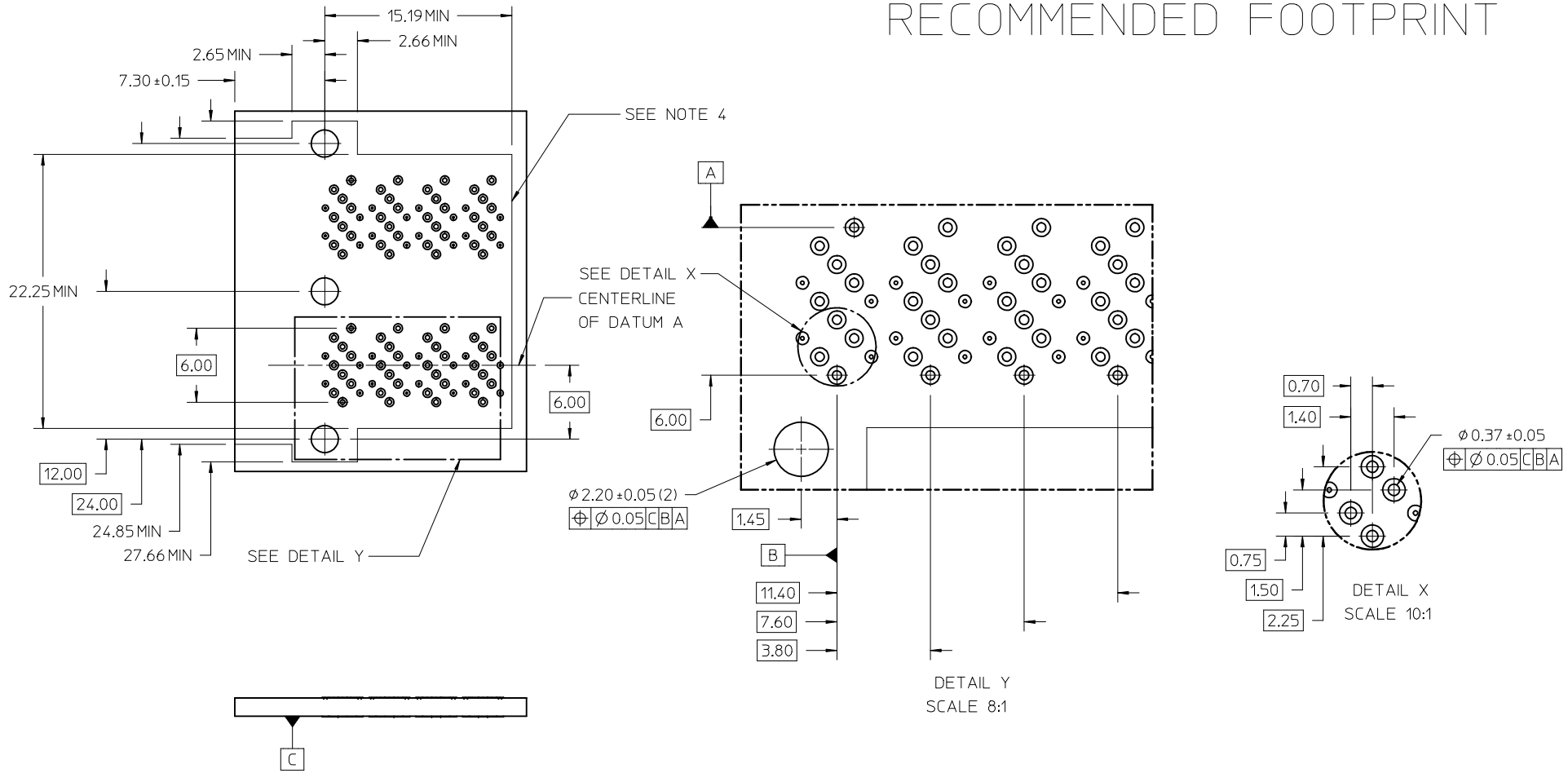
- NOTES:
- MATERIALS:  
CONNECTOR HOUSING: HIGH TEMPERATURE THERMOPLASTIC  
GLASS FILLED, UL 94V-0  
TERMINALS: COPPER ALLOY
  - FINISHES:  
CONTACT AREA: 0.76µM MIN GOLD OVER 2.54µM MIN NICKEL  
TAIL AREA:  
OPTION 1: 0.76µM-1.52µM TIN/LEAD (90/10) OVER 2.54µM MIN NICKEL  
OPTION 2: 0.76µM-1.52µM TIN (LEAD FREE) OVER 2.54µM MIN NICKEL
  - PRODUCT SPECIFICATION: PS-76867-001
  - PACKAGING SPECIFICATION: PK-76867-001
  - MATES WITH: MOLEX CABLE SERIES 111067 & 111072
  - RECOMMENDED MOUNTING HARDWARE: M2X1.35 SELF-THREADING SCREW  
MOUNTING SCREW LENGTH: PCB THICKNESS + 3.0MM MAX (1.75MM MIN)  
MOUNTING HARDWARE NOT SUPPLIED
  - APPROXIMATE MOLDING GATE LOCATION

| PLATING OPT. | MATERIAL NO. |
|--------------|--------------|
| OPTION 1     | 76867-0002   |
| OPTION 2     | 76867-0012   |

|  |   |                                      |   |   |   |                     |                               |                        |
|--|---|--------------------------------------|---|---|---|---------------------|-------------------------------|------------------------|
| <b>REV NOTE REF SHT2</b><br>EC NO: UCP2013-1619<br>DRAWN BY: DRANKINGHAM 2012/10/25<br>CHKD: TMCLELL 2012/10/29<br>APPR: TMCLELL | <b>DESCRIPTION</b><br>DESCRIPTION<br>B8 | <b>QUALITY SYMBOLS</b><br>▽=0<br>▽=0 | <b>GENERAL TOLERANCES (UNLESS SPECIFIED)</b>  |   | <b>DIMENSION STYLE</b><br>MM ONLY                   | <b>SCALE</b><br>4:1 | <b>DESIGN UNITS</b><br>METRIC | THIRD ANGLE PROJECTION |
|  |   |                                      | 4 PLACES ± --- ± ---<br>3 PLACES ± --- ± .005<br>2 PLACES ± 0.13 ± .010<br>1 PLACE ± 0.25 ± --- | DRAWN BY: KLANG<br>DATE: 2009/05/15       | <b>TITLE</b><br>IPASS PLUS HD 1X2 ASSEMBLY INTERNAL |                     |                               |                        |
|  |   |                                      | ANGULAR ± 1/2°  | CHECKED BY: _____<br>DATE: _____          | <b>MOLEX INCORPORATED</b><br>SD-76867-002           |                     |                               |                        |
|  |   |                                      | DRAFT WHERE APPLICABLE MUST REMAIN WITHIN DIMENSIONS  | APPROVED BY: MBANAKIS<br>DATE: 2010/11/17 | MATERIAL NO.<br>SEE CHART                           | DOCUMENT NO.        | SHEET NO.<br>1 OF 4           |                        |

THIS DRAWING CONTAINS INFORMATION THAT IS PROPRIETARY TO MOLEX INCORPORATED AND SHOULD NOT BE USED WITHOUT WRITTEN PERMISSION

# RECOMMENDED FOOTPRINT

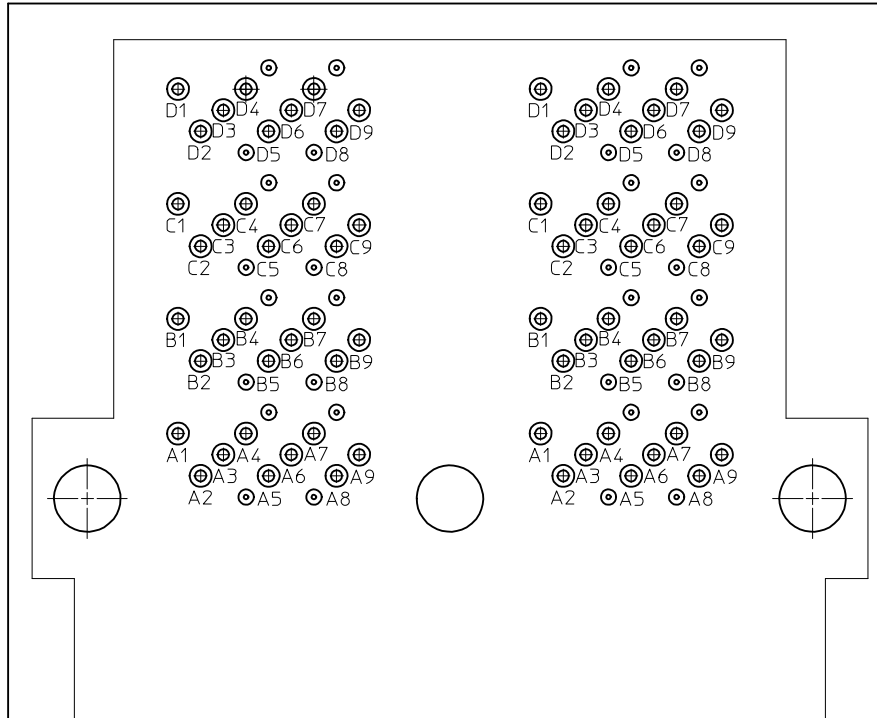


**NOTES:**

1. RECOMMENDED DRILL SIZE AND ANNULAR RING FOR A 0.37 $\phi$  FINISHED PTH - REFER TO APPLICATION SPECIFICATION AS-76867-001
2. MINIMUM RECOMMENDED SPACING: 14.00MM
3. MINIMUM PCB THICKNESS: 1.57MM
4. CONNECTOR KEEP OUT AREA

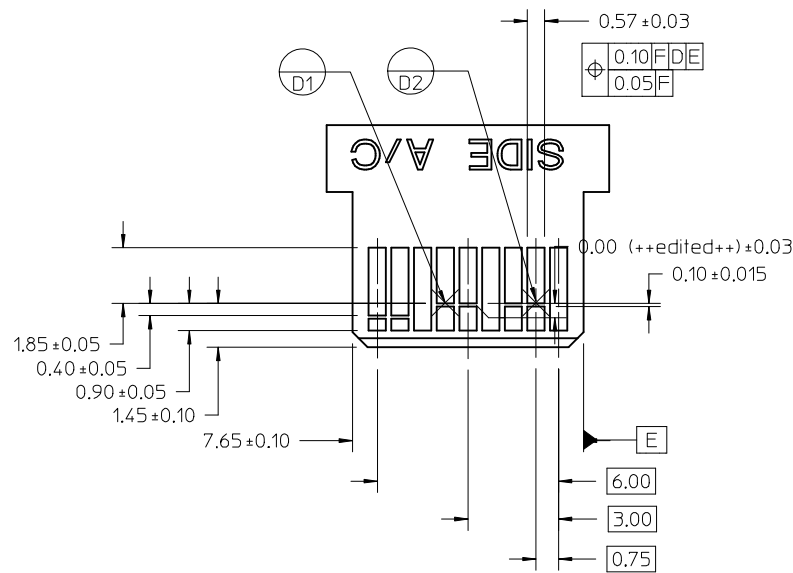
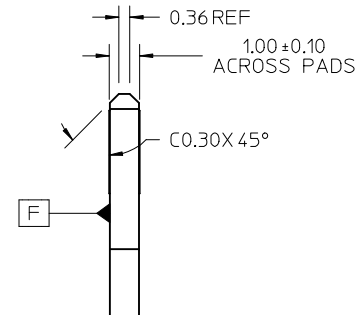
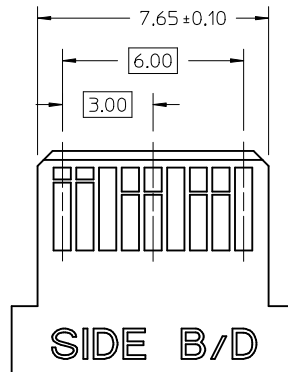
|   |                   |                               |                                       |  |                                   |  |   |                               |                        |  |
|---|-------------------|-------------------------------|---------------------------------------|--|-----------------------------------|--|---|-------------------------------|------------------------|--|
| SEE SHEET 1<br>EC NO: UCP2013-1619<br>DRAWN BY: INGHAM 2012/10/25<br>CHKD: TMCLELL 2012/10/29<br>APPR: TMCLELL                | DESCRIPTION<br>B8 | QUALITY SYMBOLS<br>▼=0<br>▽=0 | GENERAL TOLERANCES (UNLESS SPECIFIED) |  | DIMENSION STYLE<br><b>MM ONLY</b> |  | SCALE<br><b>4:1</b>                                 | DESIGN UNITS<br><b>METRIC</b> | THIRD ANGLE PROJECTION |  |
|   |                   |                               |                                       |  | DRAWN BY DATE<br>KLANG 2009/05/15 |  | TITLE<br><b>IPASS PLUS HD 1X2 ASSEMBLY INTERNAL</b> |                               |                        |  |
|   |                   |                               |                                       |  | CHECKED BY DATE                   |  | APPROVED BY DATE<br>MBANAK I S 2010/11/17           |                               |                        |  |
|   |                   |                               |                                       |  | MATERIAL NO.                      |  | DOCUMENT NO.<br><b>SD-76867-002</b>                 |                               |                        |  |
| DRAFT WHERE APPLICABLE MUST REMAIN WITHIN DIMENSIONS  |                   |                               | ANGULAR $\pm 1/2^\circ$               |  | SEE CHART                         |  | SHEET NO.<br>2 OF 4                                 |                               |                        |  |
| THIS DRAWING CONTAINS INFORMATION THAT IS PROPRIETARY TO MOLEX INCORPORATED AND SHOULD NOT BE USED WITHOUT WRITTEN PERMISSION |                   |                               |                                       |  |                                   |  |   |                               |                        |  |

# FOOTPRINT CIRCUIT IDENTIFICATION



| SEE SHEET 1<br>EC NO: UCP2013-1619<br>DRWN:KBI NGHAM 2012/10/25<br>CHKD:<br>APPR:TMCCLELL 2012/10/29<br>REV B8 | QUALITY SYMBOLS<br>▽=0<br>▽=0 | GENERAL TOLERANCES (UNLESS SPECIFIED)<br><table border="1"> <thead> <tr> <th></th> <th>mm</th> <th>INCH</th> </tr> </thead> <tbody> <tr> <td>4 PLACES ±</td> <td>---</td> <td>---</td> </tr> <tr> <td>3 PLACES ±</td> <td>---</td> <td>±.005</td> </tr> <tr> <td>2 PLACES ±</td> <td>0.13</td> <td>±.010</td> </tr> <tr> <td>1 PLACE ±</td> <td>0.25</td> <td>---</td> </tr> </tbody> </table> ANGULAR ±1/2° |                     | mm  | INCH | 4 PLACES ± | --- | --- | 3 PLACES ± | --- | ±.005 | 2 PLACES ± | 0.13 | ±.010 | 1 PLACE ± | 0.25 | --- | DIMENSION STYLE<br><b>MM ONLY</b><br>DRAWN BY DATE<br>KLANG 2009/05/15<br>CHECKED BY DATE | SCALE<br><b>8:1</b><br>DESIGN UNITS<br>METRIC<br>THIRD ANGLE PROJECTION | TITLE<br>IPASS PLUS HD<br>1X2 ASSEMBLY<br>INTERNAL |
|--|-------------------------------|--|---------------------|---|------|------------|-----|-----|------------|-----|-------|------------|------|-------|-----------|------|-----|---|---|--|
|  |                               | mm   | INCH                |   |      |            |     |     |            |     |       |            |      |       |           |      |     |   |   |  |
|  | 4 PLACES ±                    | ---  | ---                 |   |      |            |     |     |            |     |       |            |      |       |           |      |     |   |   |  |
|  | 3 PLACES ±                    | ---  | ±.005               |   |      |            |     |     |            |     |       |            |      |       |           |      |     |   |   |  |
| 2 PLACES ±   | 0.13                          | ±.010  |                     |   |      |            |     |     |            |     |       |            |      |       |           |      |     |   |   |  |
| 1 PLACE ±  | 0.25                          | ---  |                     |   |      |            |     |     |            |     |       |            |      |       |           |      |     |   |   |  |
| APPROVED BY DATE<br>MBANAKIS 2010/11/17  | MATERIAL NO.<br>SEE CHART     | DOCUMENT NO.<br>MOLEX INCORPORATED<br>SD-76867-002   | SHEET NO.<br>3 OF 4 |   |      |            |     |     |            |     |       |            |      |       |           |      |     |   |   |  |
| DRAFT WHERE APPLICABLE MUST REMAIN WITHIN DIMENSIONS   |                               |  |                     | THIS DRAWING CONTAINS INFORMATION THAT IS PROPRIETARY TO MOLEX INCORPORATED AND SHOULD NOT BE USED WITHOUT WRITTEN PERMISSION |      |            |     |     |            |     |       |            |      |       |           |      |     |   |   |  |
|  |                               |  |                     | SIZE C  |      |            |     |     |            |     |       |            |      |       |           |      |     |   |   |  |

# PLUG MODULE PCB LAYOUT



**NOTES:**

1. 0.05 MINIMUM KEEP OUT FOR SOLDER MASK AROUND ALL PADS
2. DATUM D TARGETS ARE DEFINED BY THE RESPECTIVE PAD CENTER LINES AND THE LEADING EDGE OF THE TARGET PADS

| SEE SHEET 1<br>EC NO: UCP2013-1619<br>DRAWN BY: DRANKINGHAM 2012/10/25<br>CHKD:<br>APPR: TMCLELL 2012/10/29<br>REV: B8 | QUALITY SYMBOLS<br>▽=0<br>▽=0 | GENERAL TOLERANCES (UNLESS SPECIFIED)<br><table border="1"> <thead> <tr> <th></th> <th>mm</th> <th>INCH</th> </tr> </thead> <tbody> <tr> <td>4 PLACES</td> <td>± 0.10</td> <td>± 0.004</td> </tr> <tr> <td>3 PLACES</td> <td>± 0.13</td> <td>± 0.005</td> </tr> <tr> <td>2 PLACES</td> <td>± 0.15</td> <td>± 0.010</td> </tr> <tr> <td>1 PLACE</td> <td>± 0.25</td> <td>± 0.010</td> </tr> </tbody> </table> ANGULAR ±1/2° |                    | mm | INCH      | 4 PLACES | ± 0.10 | ± 0.004 | 3 PLACES | ± 0.13 | ± 0.005 | 2 PLACES | ± 0.15 | ± 0.010 | 1 PLACE | ± 0.25 | ± 0.010 | DIMENSION STYLE<br><b>MM ONLY</b><br>DRAWN BY: KLANG<br>DATE: 2009/05/15<br>CHECKED BY: DATE: | SCALE<br><b>8:1</b><br>DESIGN UNITS<br><b>METRIC</b><br>THIRD ANGLE PROJECTION | TITLE<br><b>IPASS PLUS HD<br/>                 1X2 ASSEMBLY<br/>                 INTERNAL</b> |
|--|-------------------------------|--|--------------------|----|-----------|----------|--------|---------|----------|--------|---------|----------|--------|---------|---------|--------|---------|---|--|---|
|  |                               | mm   | INCH               |    |           |          |        |         |          |        |         |          |        |         |         |        |         |   |  |   |
|  | 4 PLACES                      | ± 0.10   | ± 0.004            |    |           |          |        |         |          |        |         |          |        |         |         |        |         |   |  |   |
|  | 3 PLACES                      | ± 0.13   | ± 0.005            |    |           |          |        |         |          |        |         |          |        |         |         |        |         |   |  |   |
| 2 PLACES   | ± 0.15                        | ± 0.010  |                    |    |           |          |        |         |          |        |         |          |        |         |         |        |         |   |  |   |
| 1 PLACE  | ± 0.25                        | ± 0.010  |                    |    |           |          |        |         |          |        |         |          |        |         |         |        |         |   |  |   |
| DRAFT WHERE APPLICABLE MUST REMAIN WITHIN DIMENSIONS   |                               | APPROVED BY: MBANAK I S<br>DATE: 2010/11/17  | MOLEX INCORPORATED |    |           |          |        |         |          |        |         |          |        |         |         |        |         |   |  |   |
|  |                               | MATERIAL NO.   | DOCUMENT NO.       |    | SHEET NO. |          |        |         |          |        |         |          |        |         |         |        |         |   |  |   |
|  |                               | SEE SHEET 1  | SD-76867-002       |    | 4 OF 4    |          |        |         |          |        |         |          |        |         |         |        |         |   |  |   |