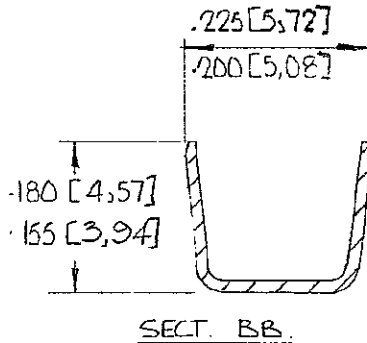
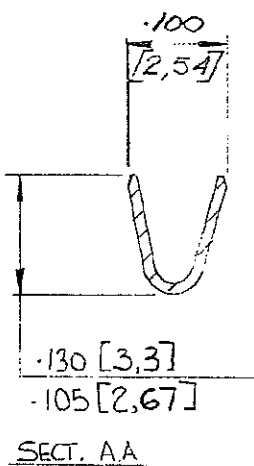
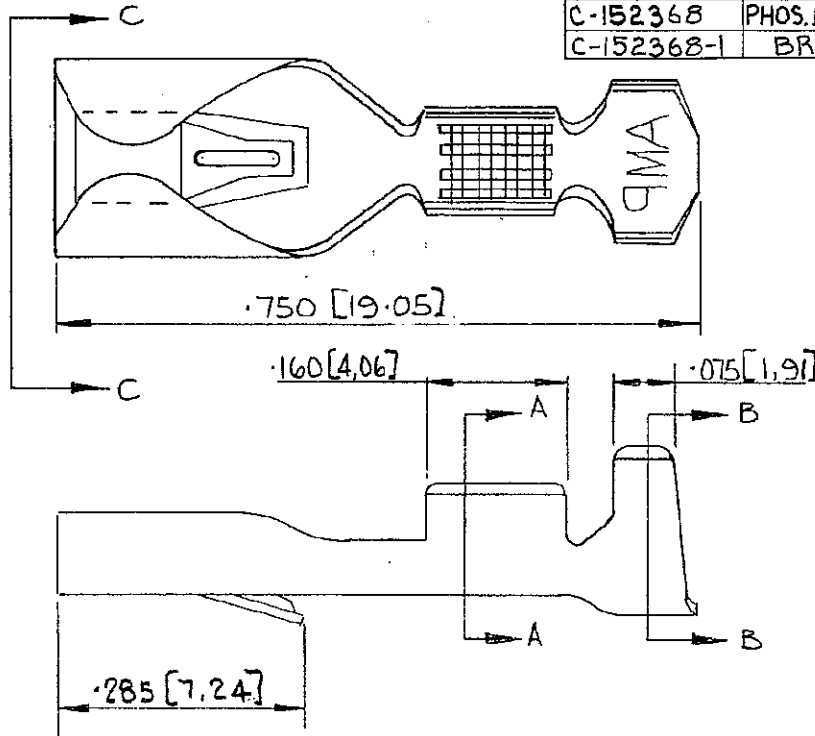


NUMBER  
C 152368

3rd ANGLE (AMERICAN) PROJECTION

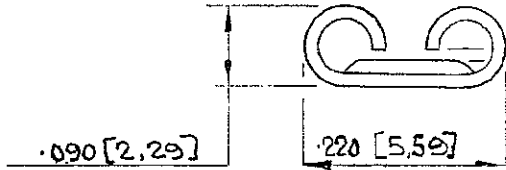
DIMENSIONS IN INCHES. DO NOT SCALE PRINT  
DIMENSIONS THUS [ ] IN MM.

PART N <sup>o</sup>	MATERIAL	FINISH
C-152368	PHOS. BRONZE	PRE-TINNED
C-152368-1	BRASS	NONE



TO FIT TAB.  
.016 [0.41]

VIEW CC



INSULATION: .090 - .130 DIA  
[2.29 - 3.3]


© AIRCRAFT-MARINE PRODUCTS  
(GREAT BRITAIN) LTD 1969

CUSTOMER COPY  
REFERENCE ONLY

MATERIAL AND FINISH  
-012 [0.3] STOCK THK.  
SEE TABLE ABOVE

**AMAP Industrial**

A DIVISION OF  
AIRCRAFT-MARINE PRODUCTS  
(GREAT BRITAIN) LTD.  
STANMORE, MIDD.

CLASS

B TABLE ADDED RKA 28.4.72

A .100 WAS .110/.085 PA 17.1.72

WIRE RANGE INSULATION TYPE  
20-16 ASSRATED AUTOMATIC.

LTR	REVISION RECORD	DR	CHK	DATE
DR	M.F. DUNNE	30/9/69	GE	30.9.69
CHK	V. Abbott	30.9.69	APP	

TOLERANCE EXCEPT AS NOTED  
± .015 10.38; ± 1° 0'

SCALE 5:1

LOC A NO C 152368 REV

NAME 187 SERIES FASTIN - FASTON RECEPTACLE.

PRINT DIST.