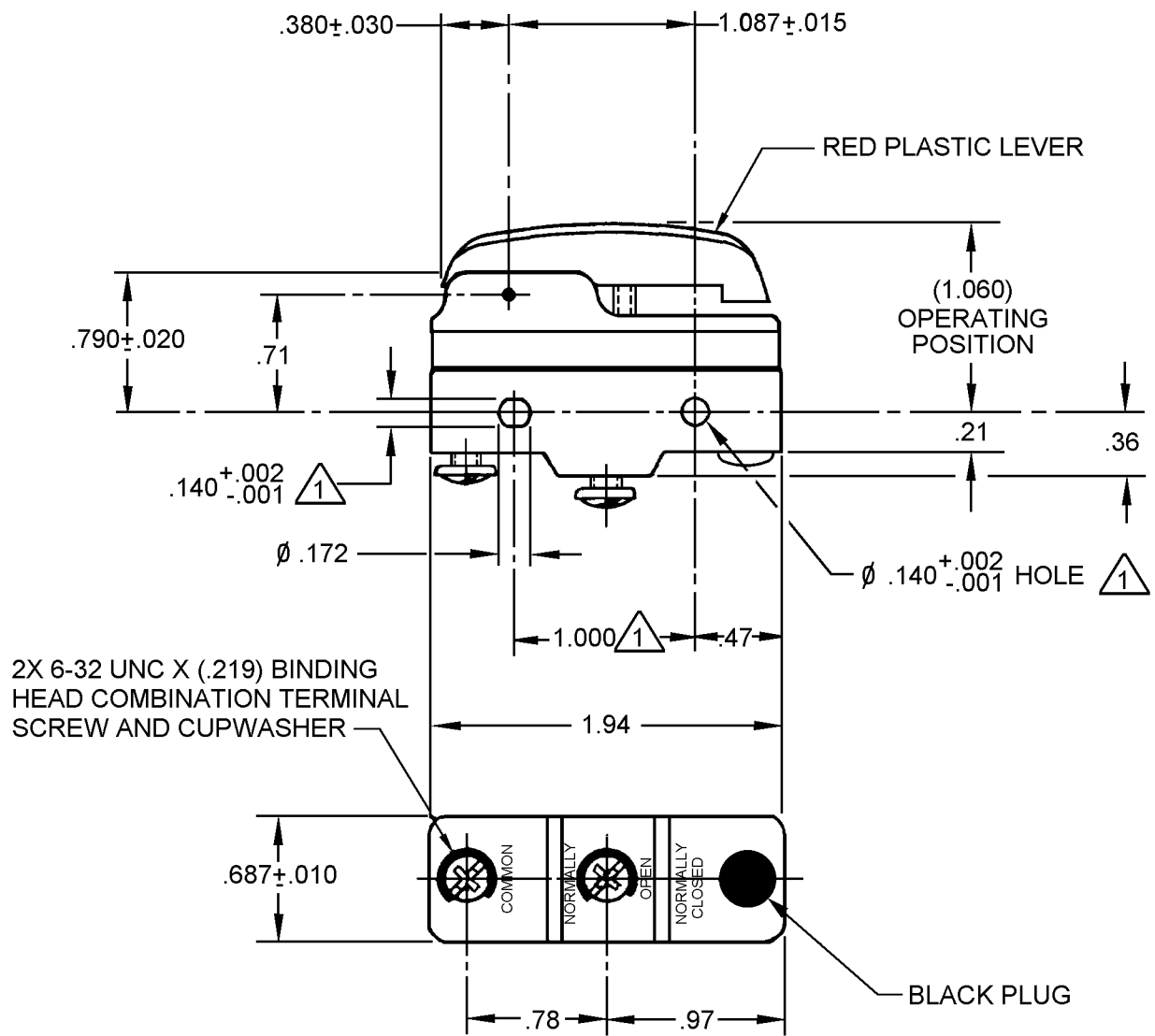


**MICRO SWITCH**  
a Honeywell Division  
FED. MFG. CODE 91929

**SWITCH - BASIC**

CATALOG LISTING  
**YZ-2RW80284-A2**  
**AYK0182**

CATALOG LISTING  
**YZ-2RW80284-A2**  
PAGE 1 OF 1  
ISSUE **4**  
REPLACES  
RELEASE NO. 205036  
CHECK  
09JAN06  
09JAN06  
09JAN06  
RJ  
CHECK  
6 MAR 02  
SAV  
CHECK  
6 MAR 02  
DRAWN  
6 MAR 02  
RASTER

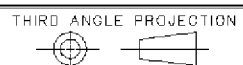


2X 6-32 UNC X (.219) BINDING HEAD COMBINATION TERMINAL SCREW AND CUPWASHER

NOTE  
MOUNTING HOLES WILL ACCEPT PINS OR SCREWS OF  $\phi .139$  MAX ON  $1.000 \pm .002$  CENTERS

ANSI Y14.5M-1982 APPLIES

THIS DRAWING COVERS A PROPRIETARY ITEM AND IS THE PROPERTY OF MICRO SWITCH, A DIVISION OF HONEYWELL. THIS DRAWING IS NOT TO BE COPIED OR USED WITHOUT THE APPROVAL OF MICRO SWITCH.



CHARACTERISTICS	ELECTRICAL DATA CONTACT ARRANGEMENT S P N O	SCALE FULL	DO NOT SCALE PRINT
		UNLESS OTHERWISE SPECIFIED TOLERANCES ARE	
	L96 15A 125, 250 OR 480 VAC 1/8HP 125 VAC, 1/4HP 250 VAC 1/2A 125 VDC, 1/4A 250 VDC	ONE PLACE (.0)	±.030
		TWO PLACE (.00)	±.015
		THREE PLACE (.000)	±.005
		ANGLES	±
		WEIGHT	

L288  
L306  
L315  
16A 250V T85 5E4