

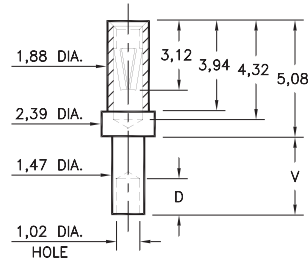
# PIN RECEPTACLES

FOR 0,56 - 0,81 DIAMETER PINS

## 0326

0326-X-19-XX-06-XX-10-0

Swage mount in 1,52 hole

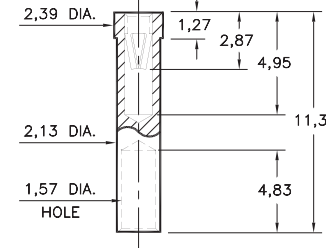


Basic Part Number	Board Thickness	Length V	Depth D
0326-1	0,79	1,57	1,02
0326-2	1,57	2,39	1,57
0326-3	2,39	3,18	1,57
0326-4	3,18	3,96	1,57

## 5295

5295-0-19-XX-06-XX-10-0

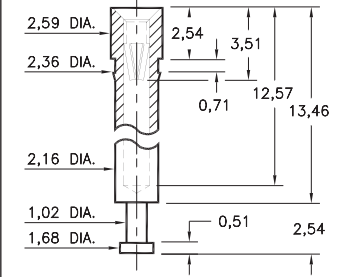
Solder mount in 2,18 min. mounting hole  
Wire Crimp Termination. Accepts wire sizes 18 AWG Max. / 22 AWG Min.



## 0396

0396-0-15-XX-06-XX-10-0

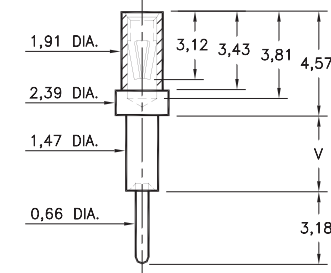
Press-fit in 2,29 mounting hole



## 0298

0298-X-15-XX-06-XX-10-0

Swage mount in 1,52 hole

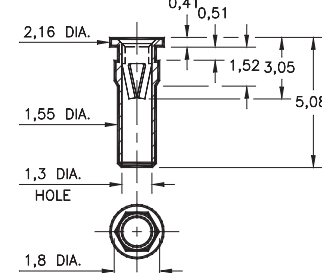


Basic Part Number	Board Thickness	Length V
0298-1	0,79	1,3
0298-2	1,57	2,08
0298-3	2,39	2,87
0298-4	3,18	3,68

## 9293

9293-0-15-XX-06-XX-10-0

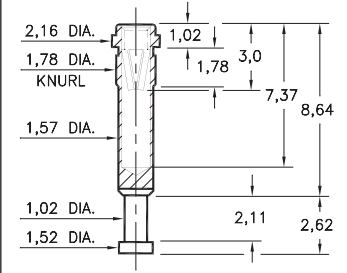
Hex press-fit in 1,7 plated through-hole



## 8864

8864-0-15-XX-06-XX-10-0

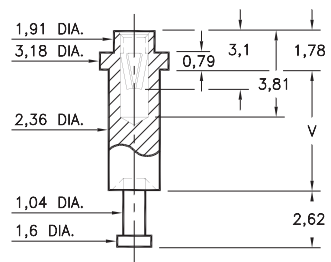
Press-fit in 1,7 mounting hole



## 0664

0664-X-15-XX-06-XX-10-0

Swage mount in 2,44 hole



Basic Part Number	Board Thickness	Length V
0664-1	2,39	3,18
0664-2	3,18	3,96
0664-3	4,78	5,56

### SPECIFICATIONS:

Shell Material: Brass Alloy 360, 1/2 Hard

Contact Material: Beryllium Copper Alloy 172, HT

Dimensions: Millimeters

Tolerances On: Lengths: ± 0,13

Diameters: ± 0,051

Angles: ± 2°



ORDER CODE: **XXXX - X - 1X - XX - 06 - XX - 10 - 0**

BASIC PART #

SPECIFY SHELL FINISH:

- 01 5,08µm TIN/LEAD OVER NICKEL
- ◆ 80 5,08µm TIN OVER NICKEL (RoHS)
- ◆ 15 0,25µm GOLD OVER NICKEL (RoHS)

SPECIFY CONTACT FINISH:

- 01 5,04µm TIN/LEAD OVER NICKEL
- ◆ 80 5,04µm TIN OVER NICKEL (RoHS)
- ◆ 27 0,76µm GOLD OVER NICKEL (RoHS)

SELECT CONTACT:

#06 CONTACT (DATA ON PAGE 255)

(For alternate contact choices, see group D on page 248)

