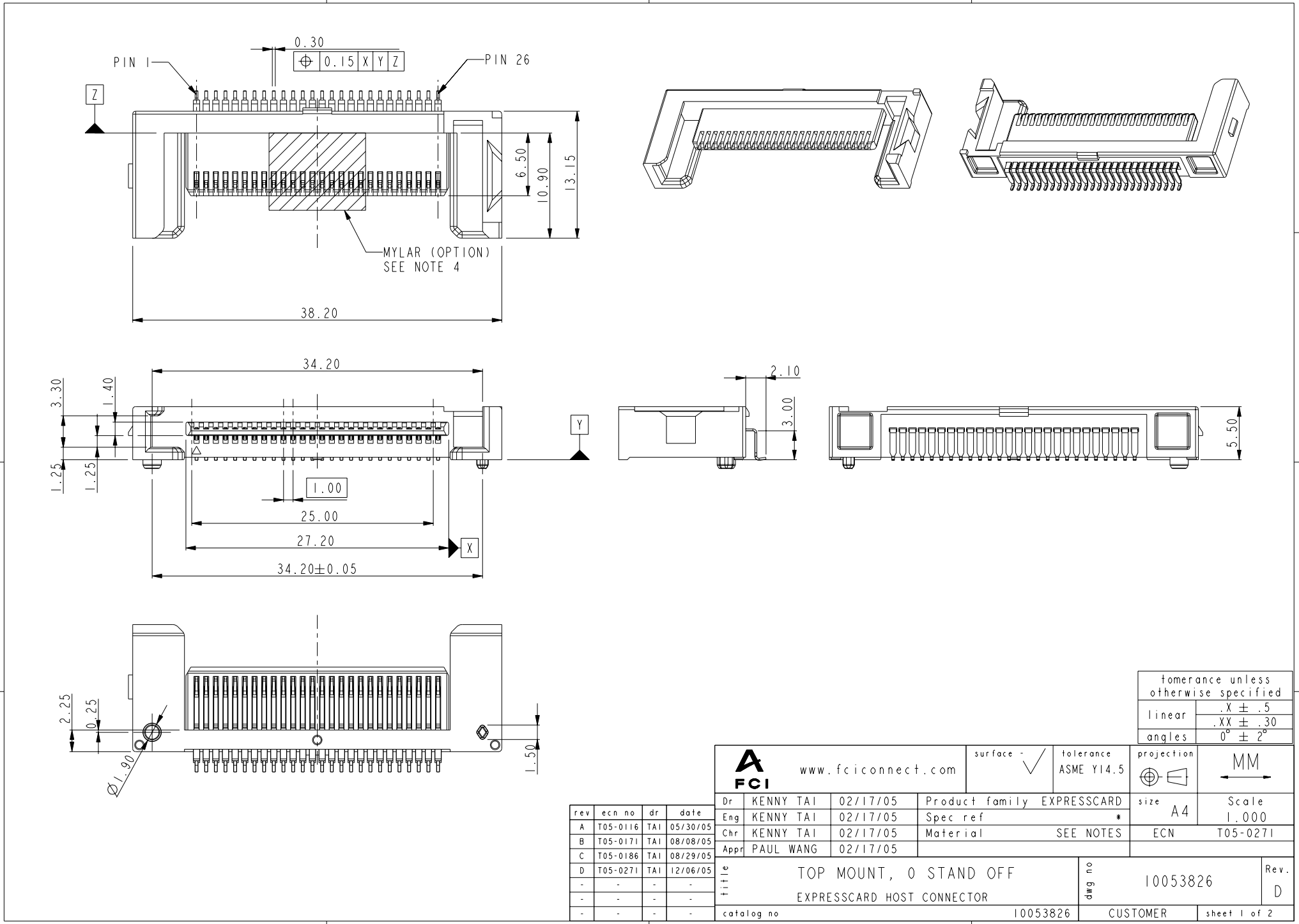


Tous droits strictement réservés. Reproduction ou communication à des tiers interdite sous quelque forme que ce soit sans autorisation écrite du propriétaire. Propriété de FCI. Droits de reproduction FCI.



All rights strictly reserved. Reproduction or issue to third parties in any form whatever is not permitted without written authority from the proprietor. Property of FCI. Copyright FCI.



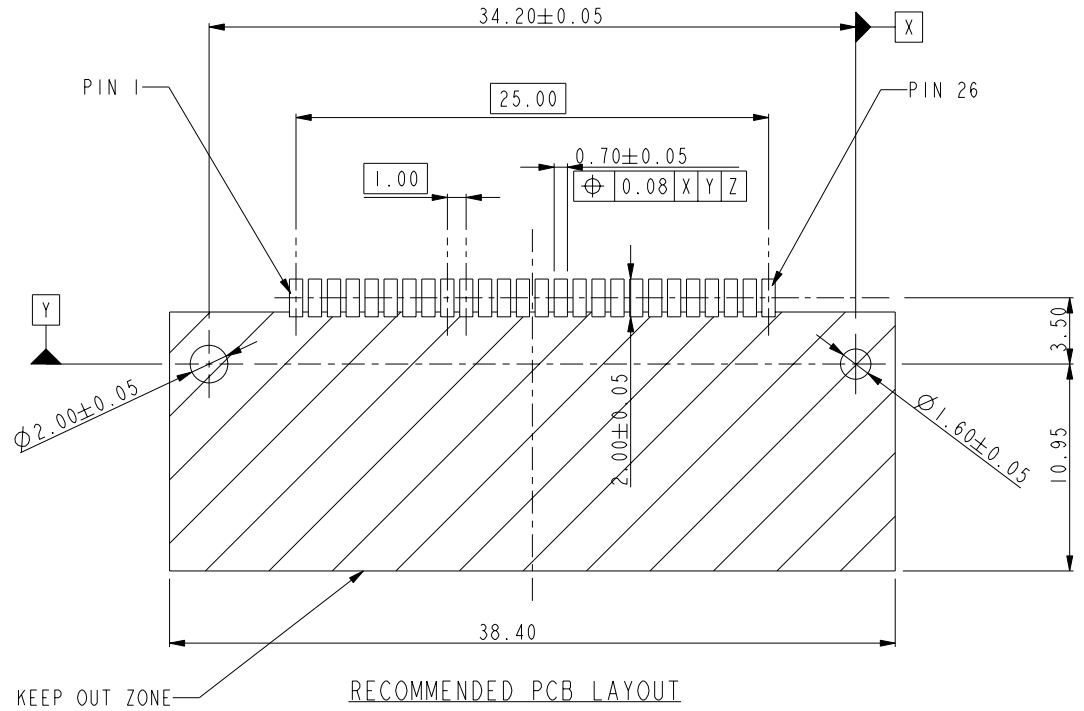
rev	ecn no	dr	date
A	T05-0116	TAI	05/30/05
B	T05-0171	TAI	08/08/05
C	T05-0186	TAI	08/29/05
D	T05-0271	TAI	12/06/05
-	-	-	-
-	-	-	-
-	-	-	-

		www.fciconnect.com		surface - ✓	tolerance ASME Y14.5	projection	MM		
Dr	KENNY TAI	02/17/05	Product family	EXPRESSCARD	size	A4	Scale		
Eng	KENNY TAI	02/17/05	Spec ref	*			1.000		
Chr	KENNY TAI	02/17/05	Material	SEE NOTES	ECN	T05-0271			
Appr	PAUL WANG	02/17/05							
title					TOP MOUNT, 0 STAND OFF		dwg no	10053826	Rev.
title					EXPRESSCARD HOST CONNECTOR				
catalog no					10053826	CUSTOMER	sheet 1 of 2		

Tous droits strictement reserves. Reproduction ou communication a des tiers interdite sous quelque forme que ce soit sans autorisation écrite du propriétaire. Propriete de FCI. Droits de reproduction FCI.



All rights strictly reserved. Reproduction or issue to third parties in any form whatever is not permitted without written authority from the proprietor. Property of FCI. Copyright FCI.



NOTES :

- MATERIAL:
HOUSING: HIGH TEMPERATURE THERMOPLASTIC,
UL 94 V-0 FLAME RETARDANT.
TERMINAL: COPPER ALLOY.
PLATING SPEC. AS BELOW :
Ni 50u" UNDER PLATED.
Au OR GXT 30u" OVER CONTACT AREA. (ONE SIDE)
Tin 120u" OVER SOLDERING AREA.
- PACKING SPEC. GS-14-924.
- PRODUCT PERFORMANCE PER SPEC. GS-12-285.
- PART NUMBER SCHEME: (EX. 10053826-100ABSMFLF)
10053826-X XX X X X X LF (LEAD FREE)

SPEC.	OPTION (CODE)		
	WITH (M)	WITHOUT ()	
MYLAR			
PACKING	TRAY (S)	TAPE & REEL (T)	TUBE (P)
HSG COLOR	BLACK (B)	NATURE (N)	
MOUNT SIDE	ABOVE (A)		
STAND-OFF	0 (00)		
PLATING	GOLD (I)	GXT (2)	

5. RoHS COMPATIBLE PRODUCT SPECIFICATIONS

- a-PLATING:
- "LF" MEANS THE PRODUCT IS LEAD-FREE, 2micro-meter MINIMUM MATTE TIN OVER 1.27micro-meter MINIMUM NICKEL UNDERPLATE.
b-MANUFACTURING PROCESS COMPATIBILITY.
- THE HOUSING WILL WITHSTAND EXPOSURE TO 260°C±5°C SOLDER BATH TEMPERATURE FOR 5 SECONDS IN A REFLOW SOLDER APPLICATION WITH A 1.6mm MIN THICK CIRCUIT BOARD.

title	TOP MOUNT, 0 STAND OFF EXPRESSCARD HOST CONNECTOR	dwg no	10053826	Rev.	D
catalog no	10053826	CUSTOMER	sheet 2 of 2		