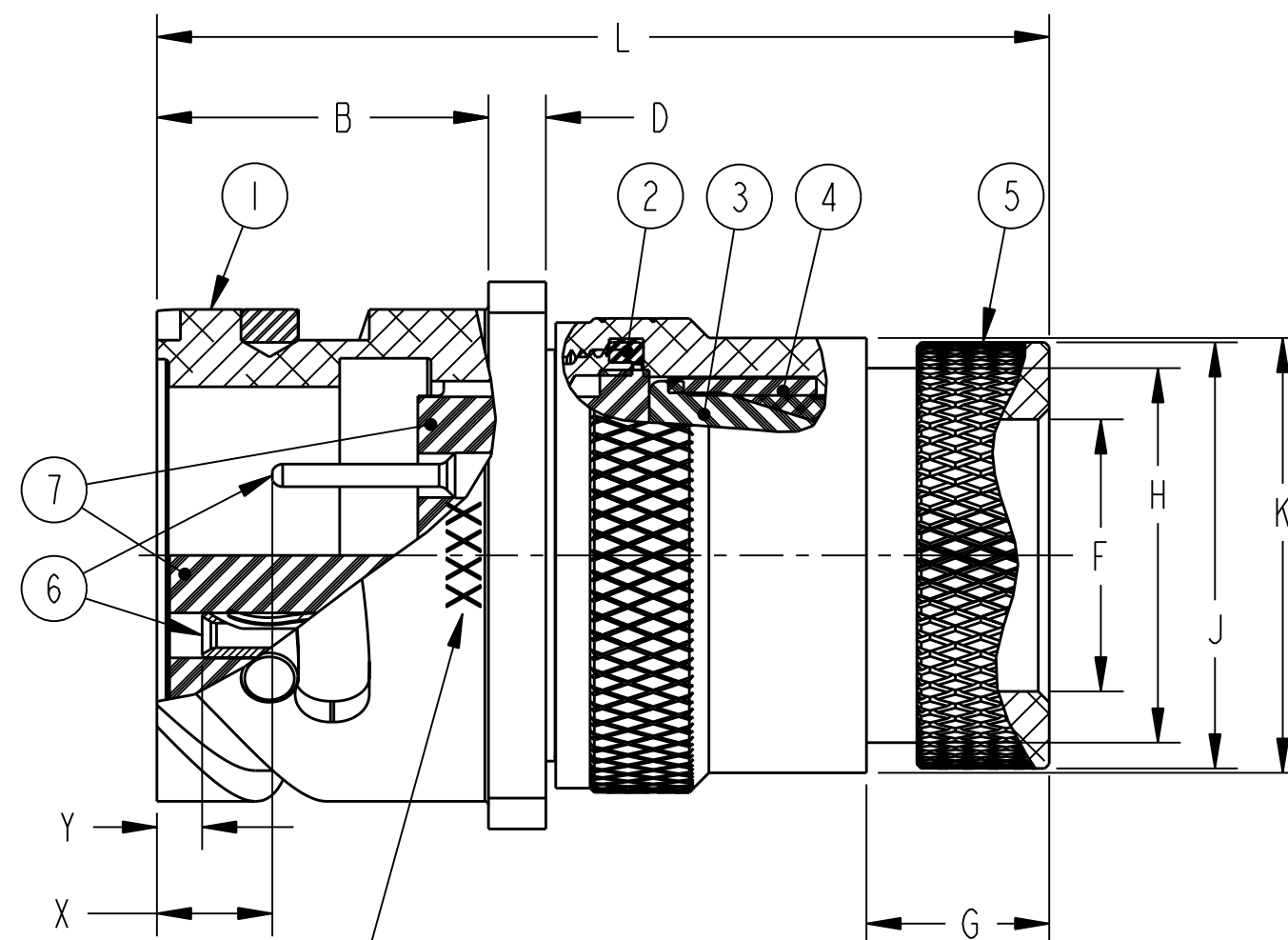
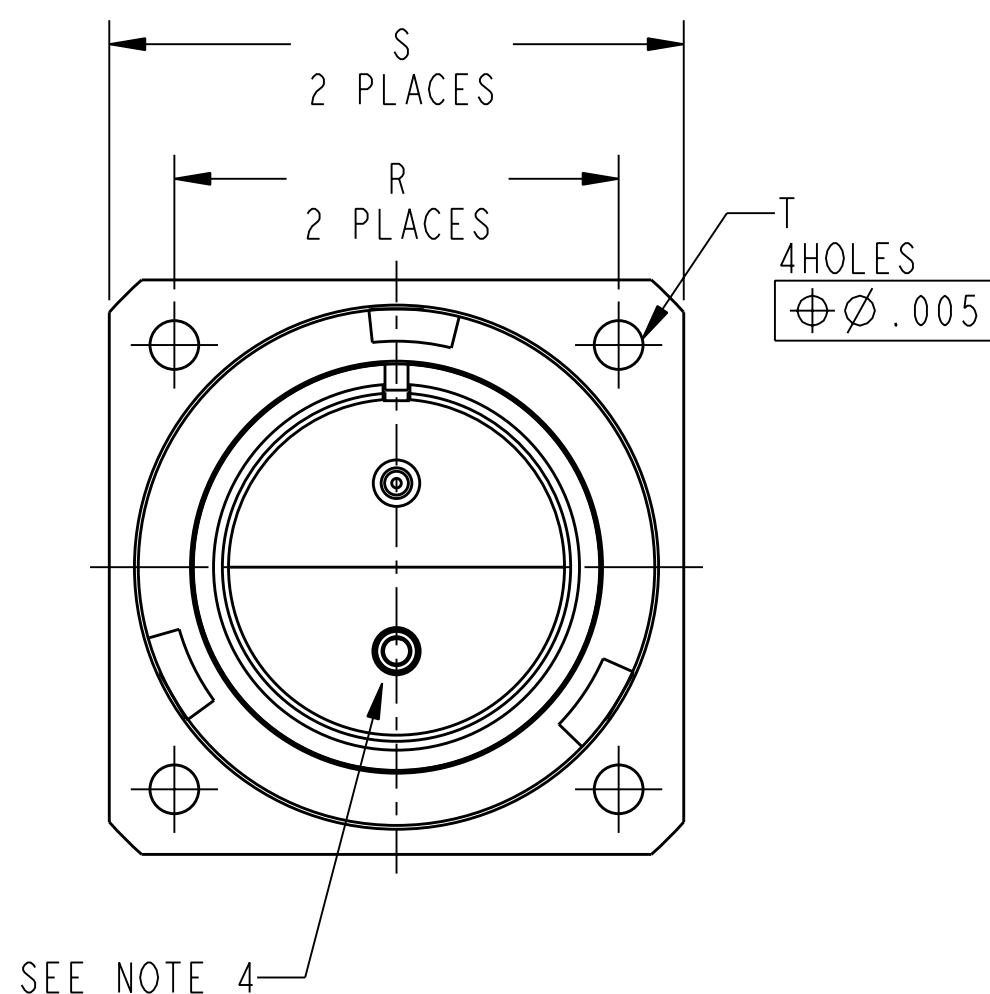
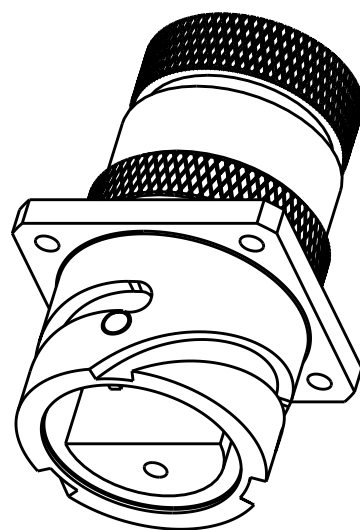


| | | | | | |
|-----------|-----------------|--------------|--|----------------------------|--|
| REV. A | | SHEET 1 OF 2 | | DOCUMENT NO. 71-586060/079 | |
| REVISIONS | | | | | |
| LTR | DESCRIPTION | | | DATE | |
| A | INITIAL RELEASE | | | | |

| INTERFACE REQUIREMENTS | | | |
|------------------------|----------------|--------------------------------|---------|
| CONTACT SIZE | SHELL SIZE | X | Y ±.040 |
| 16 SHORT | 10SL, 14S, 16S | .087±.039 | .079 |
| 16 LONG | 16 THRU 40 | .260 ^{+.052} -.041 | .102 |
| 12 | 16 THRU 40 | .118 ^{+.039} -.056 | .102 |
| 0, 4, 8 | 16 THRU 40 | .091±.039 | .102 |



BLACK INK STAMP "AMPHENOL", GT NUMBER, SEE COLUMN, AND DATE CODE, (9-3895), APPROX .125 HIGH, IN APPROX LOCATION SHOWN PER 9-3856-5.
EXAMPLE:
AMPHENOL GTC030G20-33P 0452

| POS | QTY | PART NUMBER | DESCRIPTION | NOTE |
|-----|-----|---------------|---------------------|------|
| 7 | 1 | 10-748XX-(-) | INSERT | |
| 6 | | SEE NOTE 8 | CONTACT | |
| 5 | 1 | 10-564846-XX3 | ADAPTER | |
| 4 | 1 | 10-564869-XX | SLEEVE, COMPRESSION | |
| 3 | 1 | 10-607XX-(-) | GROMMET | |
| 2 | 1 | 10-101379-XX1 | GASKET | |
| 1 | 1 | SEE COLUMN | SHELL | |

SEE SHEET 2

NOTES:

THE USE OF THIS DOCUMENT IS UNLIMITED. HOWEVER, DOCUMENTS REFERENCED HEREON MAY CONTAIN LIMITED RIGHTS DATA.

RELEASED / Aug . 18 2004, 11:49 AM

| | |
|---------------|------------------------------------|
| N/A | PRO/ENGINEER INFORMATION |
| N/A | Pro/e Model Used: GTC030G.ASSEM |
| NEXT ASSEMBLY | Drawing Name: 71-586060.079 |

UNLESS OTHERWISE SPECIFIED
SPECIFICATIONS
MATERIAL SPEC.
N/A
PROCESS SPEC.
SEE NOTE 5

LINEAR DIMENSIONS ARE IN INCHES
TOLERANCES:
.XXXX = ±.0005 ANGLES= ±2°
.XXX = ±.010
.XX = ±.03
.X = ±.1

DIM. & TOL. PER ASME Y14.5M;
DRM PER MIL-DTL-31000;
OTHER Amphenol Sds. PER 9-3800

LEGENDS:
= FLAG NOTE CALL OUT REFERENCE ONLY

| APPROVALS | | DATE |
|--------------------------------|--|-----------|
| PREPARED BY A.Prescott | | 12-Aug-04 |
| ENGINEER IN CHARGE R.Barnes | | |
| DESIGN MANAGER D.Gallusser | | |
| DESIGN ACTIVITY GROUP C & I | | |
| THIRD ANGLE PROJECTION | | |

| PARTS LIST | | | |
|---|---------------------------|--------------------------------------|------------------|
| AMPHENOL CORPORATION 40-60 DELAWARE AVENUE SIDNEY, N.Y. 13850 | | | |
| CONNECTOR, ELECTRICAL RECEPTACLE, TYPE GTC030G-(), OLIVE DRAB CADMIUM PLATED | | | |
| SIZE C | CAGE CODE 77820 | DOCUMENT NO. 71-586060/079 | REV. A |
| SCALE: 2.0 | | REF: 71-621380/399 | SHEET 1 OF 2 |

| ASSEMBLY NUMBER | SIZE | GT NUMBER | SHELL | B ±.008 | D ±.008 | F DIA MIN | G ±.020 | H DIA MAX | J DIA ±.008 | K DIA ±.008 | L MAX | R | S ±.012 | T DIA ±.002 |
|-----------------|------|----------------|---------------|------------|------------|-----------------|------------|-----------------|-------------------|-------------------|----------|-------|------------|-------------------|
| 71-586060-() | 8S | NOT AVAILABLE | | | | | | | | | | | | |
| 71-586061-() | 10S | NOT AVAILABLE | | | | | | | | | | | | |
| 71-586062-() | 10SL | GTC030G10SL-() | 10-580713-113 | .725 | .110 | .303 | .461 | .524 | .610 | .669 | 1.969 | .717 | 1.000 | .128 |
| 71-586063-() | 12S | NOT AVAILABLE | | | | | | | | | | | | |
| 71-586064-() | 12 | NOT AVAILABLE | | | | | | | | | | | | |
| 71-586065-() | 14S | GTC030G14S-() | 10-580713-143 | .725 | .126 | .417 | .461 | .669 | .752 | .791 | 1.969 | .906 | 1.181 | .128 |
| 71-586066-() | 14 | NOT AVAILABLE | | | | | | | | | | | | |
| 71-586067-() | 16S | GTC030G16S-() | 10-580713-163 | .725 | .126 | .531 | .461 | .862 | .941 | .923 | 1.969 | .969 | 1.280 | .128 |
| 71-586068-() | 16 | GTC030G16-() | 10-580713-173 | .854 | .126 | .531 | .453 | .862 | .941 | .923 | 2.362 | .969 | 1.280 | .128 |
| 71-586069-() | 18 | GTC030G18-() | 10-580713-183 | .915 | .157 | .637 | .453 | .862 | .941 | 1.043 | 2.362 | 1.063 | 1.378 | .128 |
| 71-586070-() | 20 | GTC030G20-() | 10-580713-203 | .915 | .157 | .736 | .500 | 1.031 | 1.165 | 1.189 | 2.559 | 1.157 | 1.496 | .128 |
| 71-586071-() | 22 | GTC030G22-() | 10-580713-223 | .915 | .157 | .877 | .500 | 1.031 | 1.165 | 1.323 | 2.559 | 1.252 | 1.614 | .128 |
| 71-586072-() | 24 | GTC030G24-() | 10-580713-243 | .915 | .157 | .969 | .500 | 1.358 | 1.488 | 1.421 | 2.559 | 1.374 | 1.752 | .148 |
| 71-586073-() | 28 | GTC030G28-() | 10-580713-283 | .955 | .157 | 1.094 | .500 | 1.358 | 1.488 | 1.630 | 2.559 | 1.563 | 2.000 | .148 |
| 71-586074-() | 32 | GTC030G32-() | 10-580713-323 | .955 | .157 | 1.392 | .598 | 1.717 | 1.882 | 1.913 | 2.756 | 1.752 | 2.244 | .171 |
| 71-586075-() | 36 | GTC030G36-() | 10-580713-363 | .955 | .157 | 1.539 | .598 | 1.717 | 1.882 | 2.157 | 3.150 | 1.937 | 2.500 | .171 |
| 71-586076-() | 40 | GTC030G40-() | 10-580713-403 | .955 | .157 | 1.898 | .610 | 2.071 | 2.276 | 2.402 | 3.150 | 2.185 | 2.752 | .171 |
| 71-586077/79 | | NOT AVAILABLE | | | | | | | | | | | | |

TO COMPLETE, ADD APPLIACLE INSERT ARRANGEMENT SUFFIX PER 9-2437.

- 7. FOR MATING CONNECTOR ASSEMBLES, SEE 71-580450/469 AND OTHERS.
- 6. SEE WORK ORDER FOR PERMISSIBLE ADDITIONAL OR ALTERNATE STAMPING.
- 5. PROCESS SPEC:
 ASSY 9-9238
 TEST 9-3106-18
 9-3856-5, 9-3895, 9-2437, 9-1936
- 4. INSERTS ARE NOT REMOVABLE.
- 3. DRAWING ILLUSTRATES FINAL ASSEMBLY.
- 2. FOR CONTACT SIZE, SPACING AND SERVICE RATING, SEE MIL-STD-1651 OR L-11908/48-().
- 1. UNIT MEETS THE APPLICABLE REQUIREMENTS OF MIL-C-5015.

- 10. APPLY A LIGHT FILM OF LUBE 9-1936 TO GASKET.
- 9. PACKAGE PER PRODUCTION PROCESS SHEET.
- 8. SEE SEPARATE PARTS LIST FOR COMPONENT PART NUMBERS AND QUANTITIES.

NOTES:
 THE USE OF THIS DOCUMENT IS UNLIMITED. HOWEVER, DOCUMENTS REFERENCED HEREON MAY CONTAIN LIMITED RIGHTS DATA.

RELEASED / Aug . 18 2004, 11:49 AM

| | | | |
|------------------|---------------------------|--------------------------------------|------------------|
| SIZE C | CAGE CODE 77820 | DOCUMENT NO. 71-586060/079 | REV. A |
| SCALE: 2.0 | REF. 71-621380/399 | SHEET 2 OF 2 | |

71-586060/079 SHEET 2 OF 2

71-586060/079 SHEET 2 OF 2