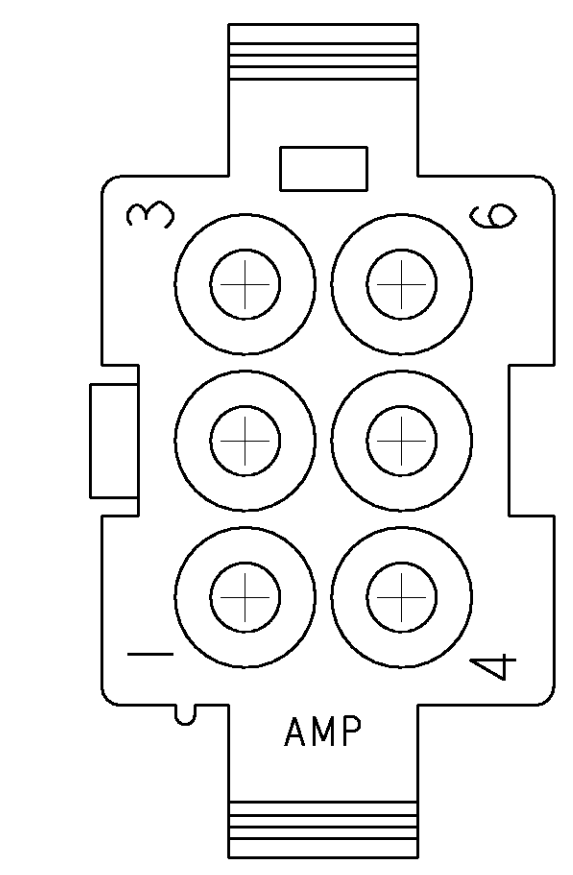
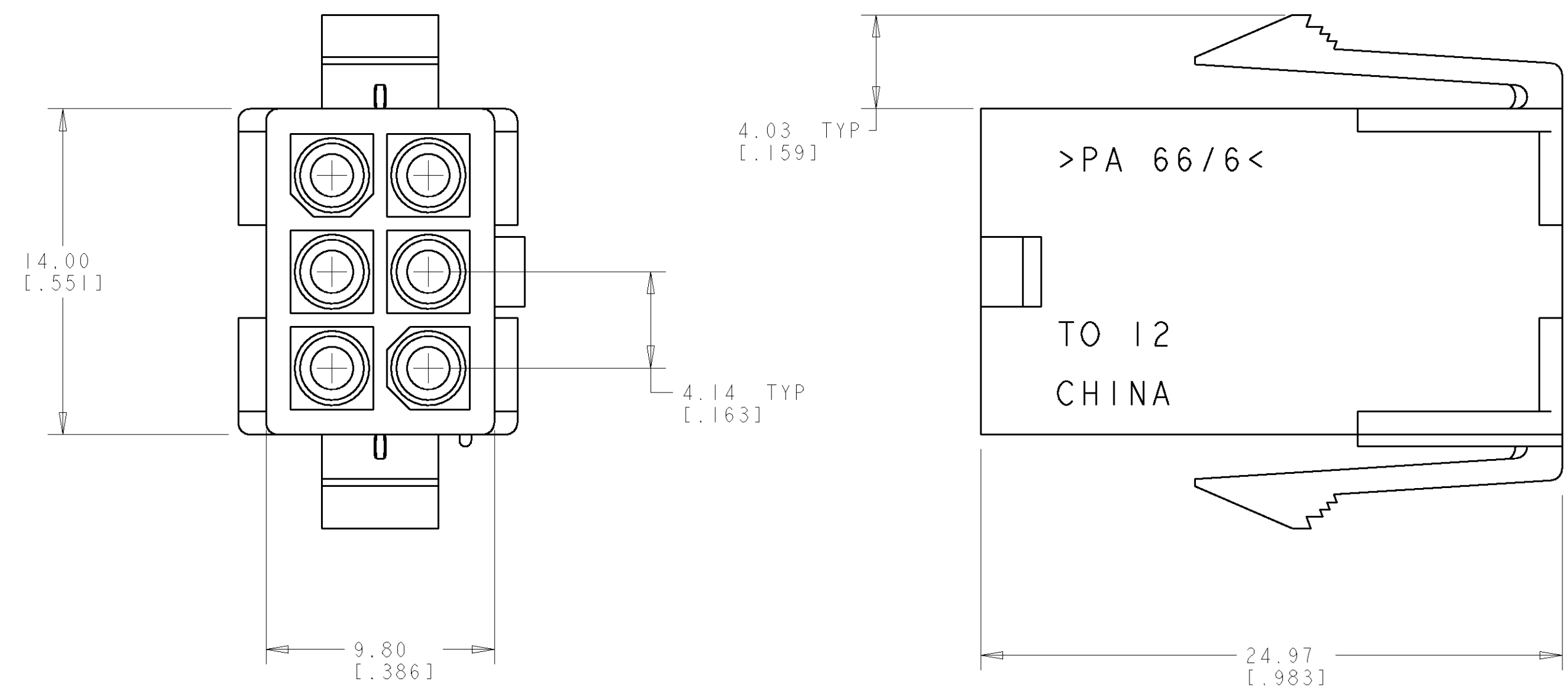
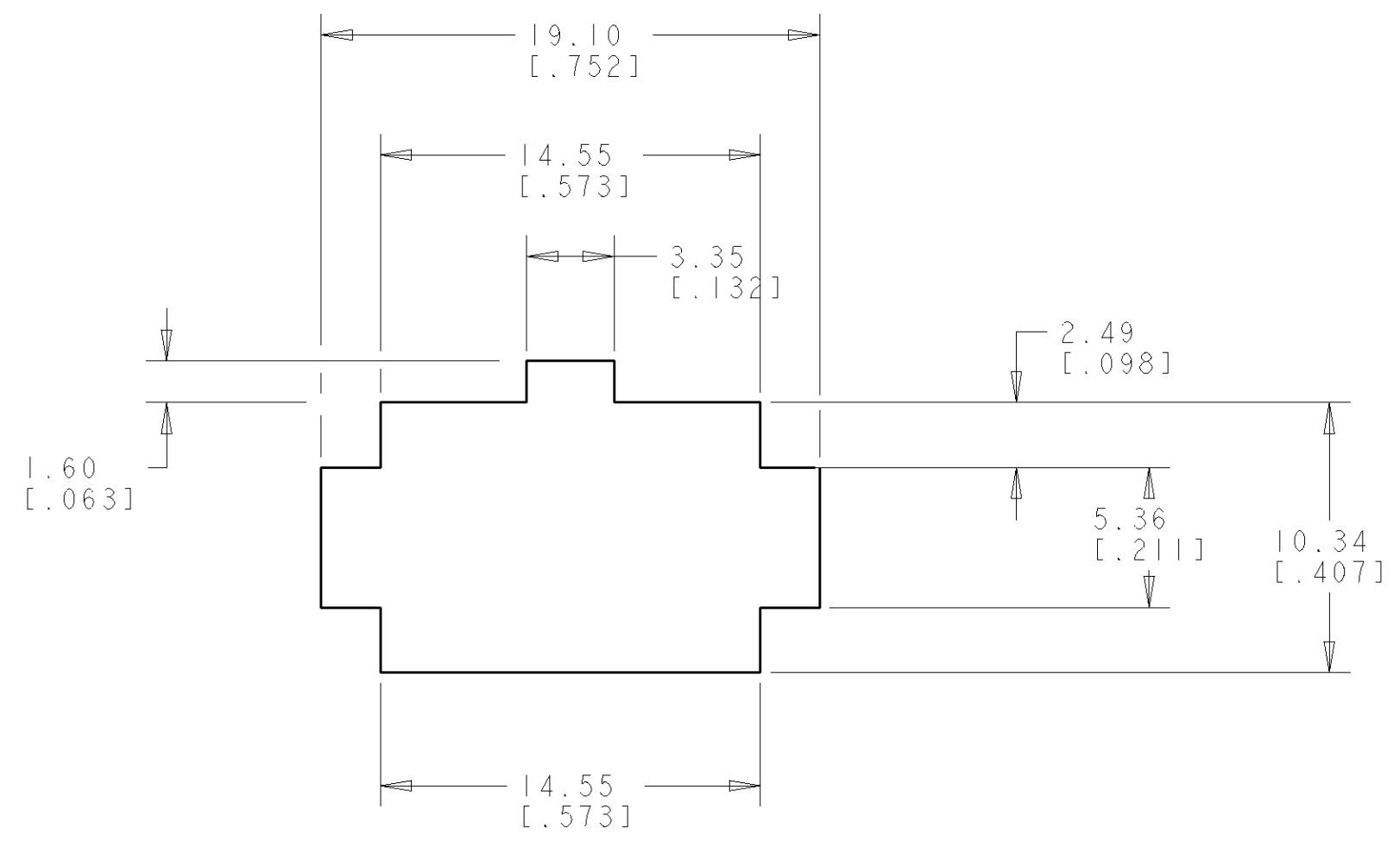
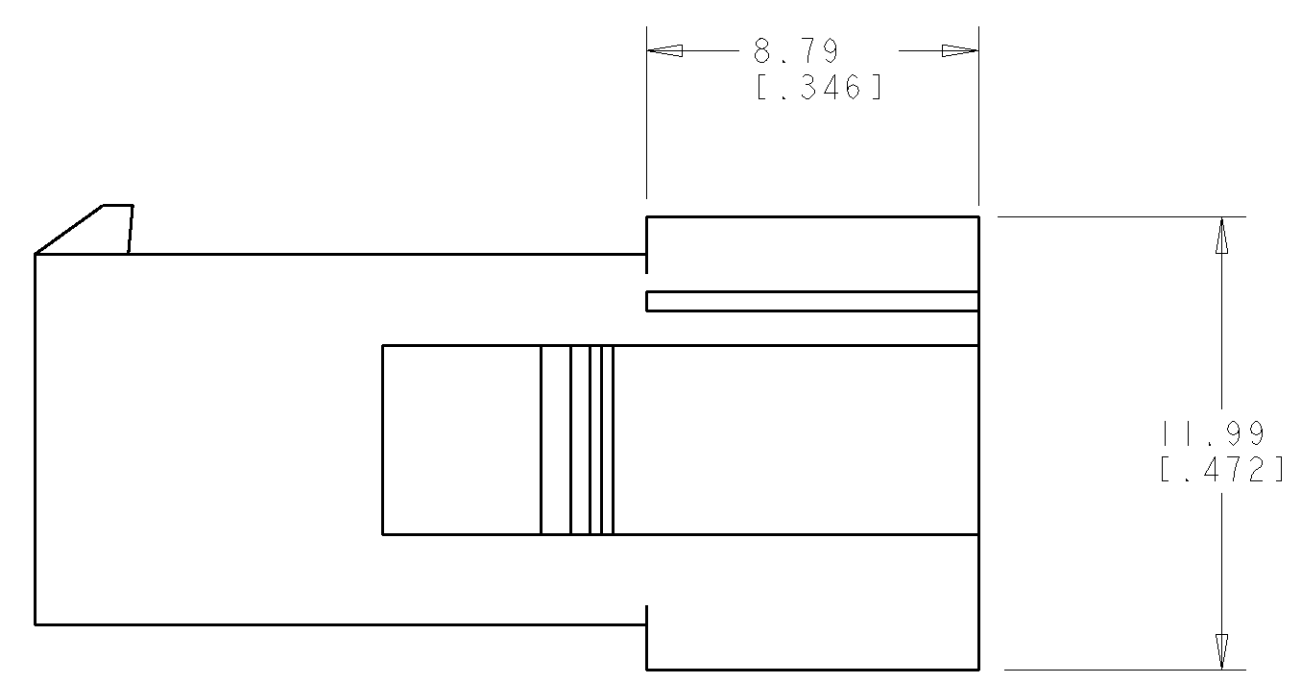


LOC	DIST	REVISIONS			
P	LTR	DESCRIPTION	DATE	DRN	APVD
B1		REVISED PER ECO-11-005294	30APR11	RK	HMR

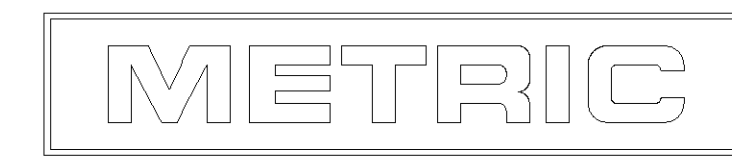


1. APPLICABLE CONTACT P/N: 170539, 170360, 170361, 170362.
2. DIMENSIONS IN BRACKETS ARE IN INCHES.
3. RECOMMENDED PANEL THICKNESS TO BE 0.8-2.0 [.031-.079].
4. HOUSING INSERTION INTO THE PANEL CUT OUT MUST BE IN THE SAME DIRECTION AS THE PUNCH.



RECOMMENDED PANEL CUT OUT
 SCALE 4:1

794940-1
 PART NUMBER



DIMENSIONS: mm [INCHES]		TOLERANCES UNLESS OTHERWISE SPECIFIED:		DRN B. WHITAKER 23-JULY-2001	TE Connectivity
		0 PLC ± 1 PLC ± 2 PLC ±0.13 [.005] 3 PLC ± 4 PLC ± ANGLES ±40° 30'		CHK C. JONES 23-JULY-2001	
MATERIAL NYLON, UL94V-0 NATURAL		FINISH -		APVD C. JONES 23-JULY-2001	RESTRICTED TO
CUSTOMER DRAWING		SCALE 5:1		PRODUCT SPEC	SIZE CAGE CODE DRAWING NO
				APPLICATION SPEC	A 00779 C=794940
				WEIGHT	SHEET 1 OF 1
				REV B1	