

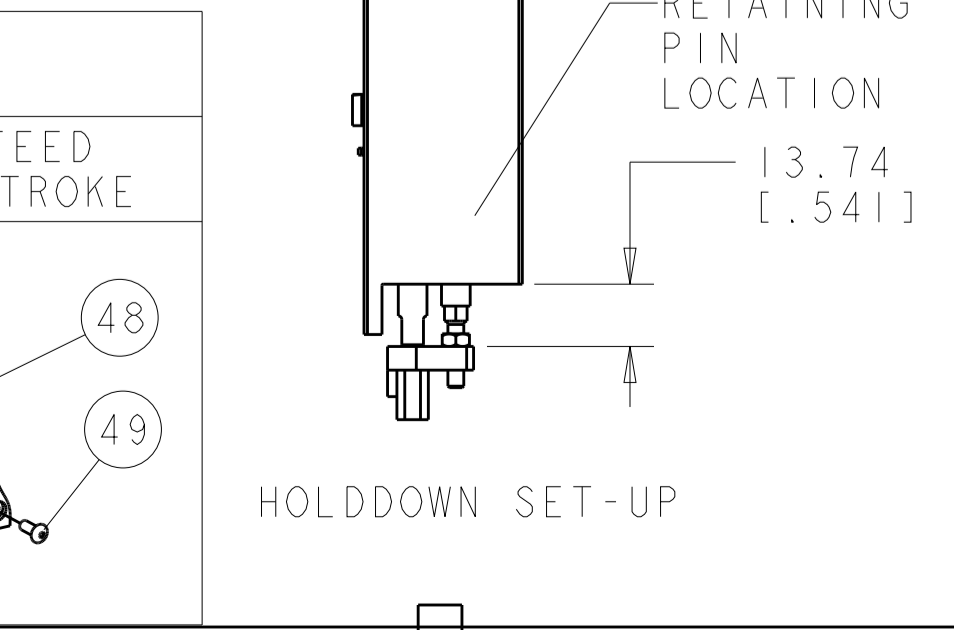
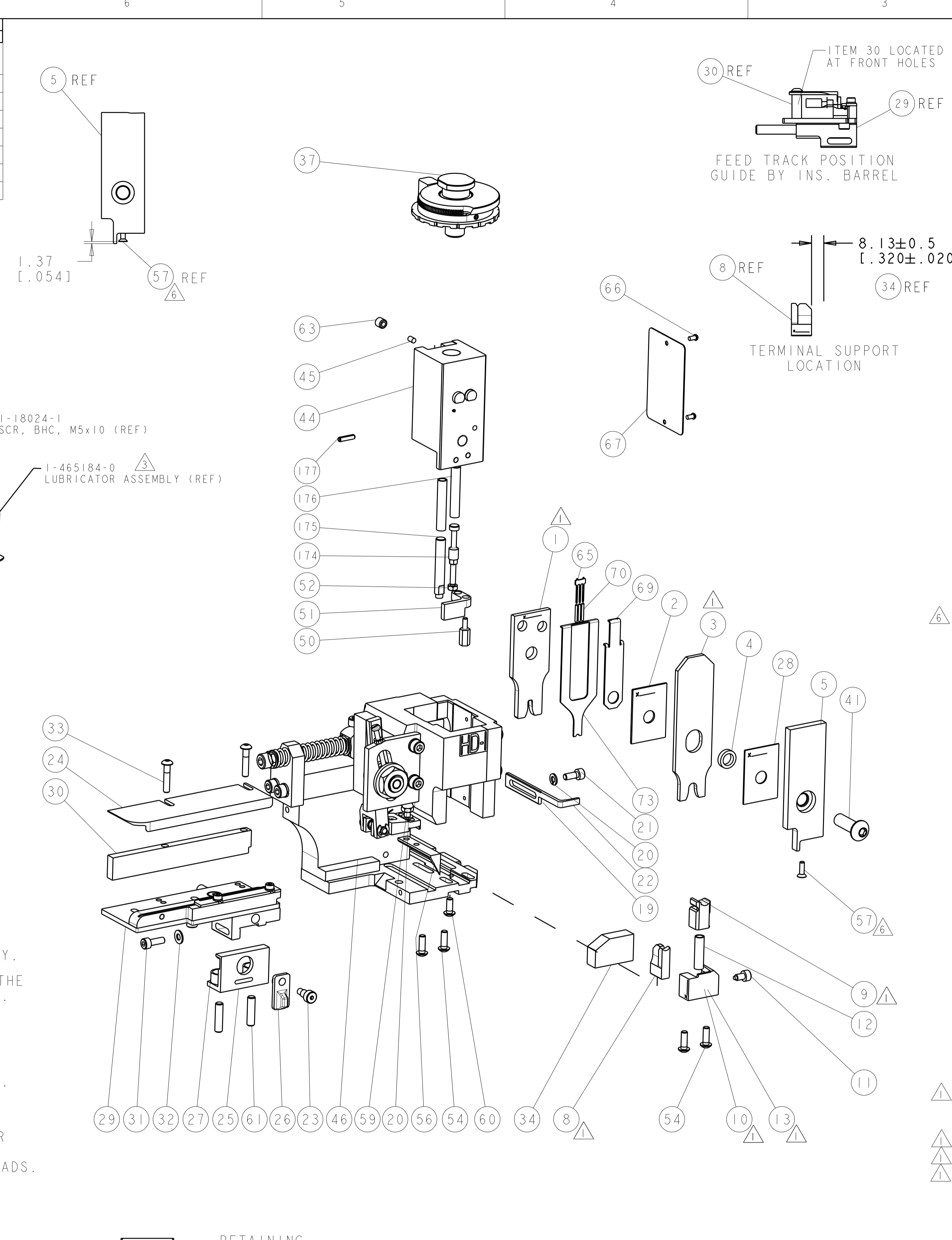
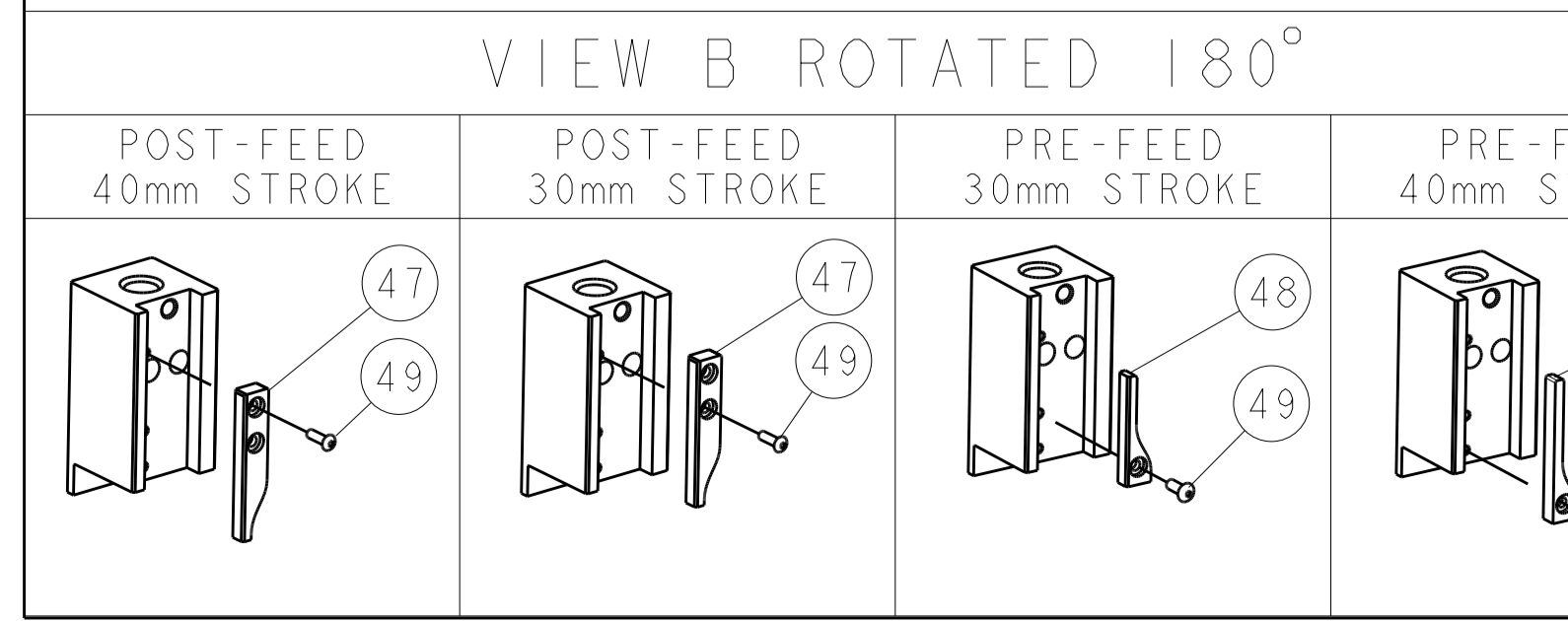
PART NUMBER	REV	TERMINATOR	FEED TYPE	DESCRIPTION
1530460-1	C	LEADMAKER	MECH POST FEED	CUTS CARRIER
1530460-2	C	BENCH	MECH PRE FEED	CUTS CARRIER
1530460-6	C	LEADMAKER	MECH POST FEED	CONTINUOUS CARRIER
7-1530460-1	C	LEADMAKER	MECH POST FEED	-1 AND SPARE PARTS
7-1530460-2	C	BENCH	MECH PRE FEED	-2 AND SPARE PARTS
7-1530460-6	C	LEADMAKER	MECH POST FEED	-6 AND SPARE PARTS
7-1530460-7	A	-	-	SPARE PARTS KIT

CRIMP DATA		TEC TERMINAL	TEC CRIMP SPECS
TERMINAL NAME: Ø4MM SOCKET CONTACT			
CRIMP	SIZE	TYPE	RANGE
WIRE	3.05mm [.120 IN]	F	>2.5-4.0mm ²
INSUL	6.35mm [.250 IN]	O	Ø6.00mm MAX [.236 IN]
WIRE STRIP LENGTH 5.50mm [.217 IN]		APPL INSTRUCTIONS 408-8322 & 408-8490	

TERMINAL	SEAL	FEED
962956	963245	19.80mm [.780 IN]

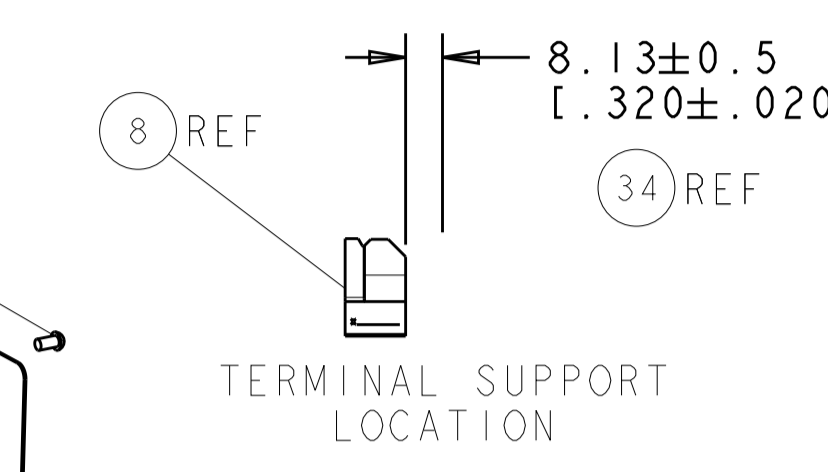
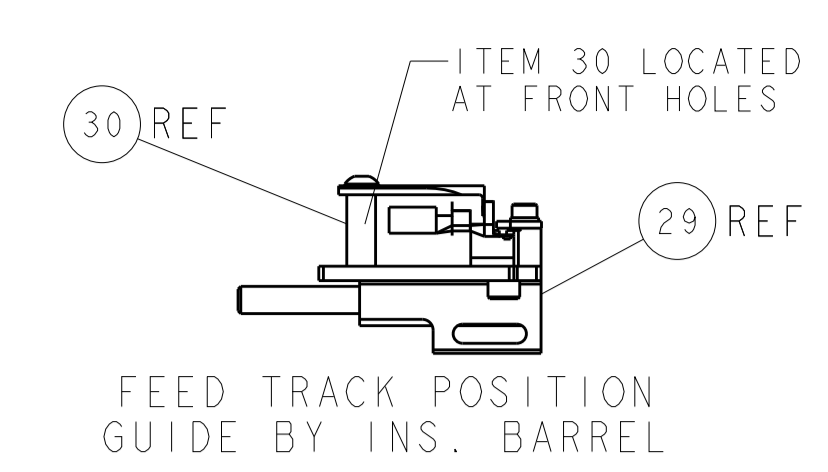
WIRE SIZE	CRIMP HEIGHT	REF SETTING
4.00mm ²	2.30 ±0.05mm [.091 ±.002 IN]	B0
3.00mm ²	2.05 ±0.05mm [.081 ±.002 IN]	C0

- △ RECOMMENDED SPARE PARTS.
- 2. GREASE RAM, CAM, CAM FOLLOWER AND FEED ROD LIGHTLY.
- △ CERTAIN TERMINALS REQUIRE LUBRICATION. REFER TO THE APPLICATOR INSTRUCTION SHEET FOR MORE INFORMATION.
- 4. LUBRICATE DAILY PER THE APPLICATOR INSTRUCTION SHEET SUPPLIED WITH THE APPLICATOR.
- △ THIS APPLICATOR APPLIES TERMINAL WITH A SEAL. INSULATION DIA QUOTED IS OUTSIDE DIAMETER OF SEAL. WIRE INSULATION DIA IS DEPENDENT ON SEAL BEING APPLIED. SEAL PN 963245 INS. DIA RANGE IS 6mm.
- △ APPLY TORQ-SEAL IN ALLEN SOCKET TO FILL HOLE AFTER FLAT HD HAS BEEN ADJUSTED TO CORRECT HEIGHT AT QUALIFICATION. APPLY #1-23419-5 LOC-TITE TO THREADS.



*** WARNING**
ON INSTALLATION, SET WIRE DISC TO LARGEST WIRE SIZE SETTING. USE OF SETTINGS BELOW MIN. REQUIRED CRIMP HEIGHT SETTING WILL CAUSE DAMAGE TO CRIMP TOOLING.

SET UP GAGE
458637-3



LOC		DIST		REVISIONS			
A	66	P	LTM	DESCRIPTION	DATE	OWN	APPD
		B		ECR-12-009231	18MAY2012	XZ	TE
		C		ECR-12-014580	15AUG2012	MY	GB

QTY	UNIT	DESCRIPTION	ITEM NO
-	1	993111-8 PIN, SLOTTED SPRING 3.0 X 12.0	177
-	2	3-22280-7 SPRING, COMPRESSION	176
-	1	1752353-1 GUIDE PIN, HOLDDOWN	175
-	1	1901680-1 GUIDE PIN, HOLDDOWN	174
-	1	1490525-1 DEPRESSOR, WIRE	73
-	1	1338705-3 DOCUMENTATION PACKAGE	71
-	3	2-23147-2 SPRING, COMPRESSION	70
-	1	1490524-2 DEPRESSOR, SPACER	69
-	1	461264-5 PLATE, IDENTIFICATION	67
-	2	21017-2 SCREW, DRIVE	66
-	1	1424350-1 HOLDER, PIN, WIRED	65
-	1	3-18031-0 SCR, SET, CUP POINT M6 X 6.0	63
-	2	2-18032-5 SCR, SET, FLT POINT M5 X 20.0	61
-	1	18024-7 SCR, BTN SKT HD CAP (M4 X 10.0)	60
-	1	5-18022-2 SCR, HEX HD CAP M4 X 8.0	59
-	1	985575-3 SCR, FLT SKT HD CAP M3 X 10.0	57
-	1	1338685-1 PAWL, FEED	56
-	4	18024-8 SCR, BTN SKT HD CAP (M4 X 12.0)	54
-	1	1-18030-0 NUT, HEX, REG M3.5	52
-	1	1901681-1 HOLDDOWN, TERMINAL	51
-	1	2-1752354-8 STANDOFF, HOLD-DOWN	50
-	1	18024-3 SCR, BTN SKT HD CAP (M3 X 10.0)	49
-	1	1338675-1 CAM, UNIVERSAL PRE FEED	48
-	1	1338676-1 CAM, UNIVERSAL POST-FEED	47
-	1	1320999-4 APPLICATOR SUBASSEMBLY, HDI	46
-	1	690191-1 PLUG, NYLON	45
-	1	1633724-1 RAM, (SIDE FEED)	44
-	1	2-18024-6 SCR, BTN SKT HD CAP (M8 X 25.0)	41
-	1	879103-2 FINE ADJUST HEAD ASSEMBLY	37
-	1	1-1752356-3 SUPPORT, TERMINAL	34
-	2	1-18024-0 SCR, BTN SKT HD CAP (M4 X 20.0)	33
-	1	18027-2 WASHER, FLAT, REG M4	32
-	1	1-18023-2 SCR, SKT HD CAP M4 X 12.0	31
-	1	1320908-7 SPACER, STRIP GUIDE	30
-	1	1633073-2 STRIP GUIDE ASSEMBLY	29
-	1	455888-6 SPACER, CRIMPER	28
-	2	1-22284-0 SPRING, COMPRESSION	27
-	1	356835-1 LEVER, DRAG RELEASE	26
-	1	240792-1 DRAG, TERMINAL	25
-	1	1320928-2 STRIP GUIDE	24
-	1	980371-4 SCR, SKT HD SHLDR 5.0 DIA X 6.0	23
-	1	690472-2 STRIPPER	22
-	1	1-18023-1 SCR, SKT HD CAP M4 X 10.0	21
-	2	18025-2 WASHER, SPRG LOCK, REG M4	20
-	1	690472-1 STRIPPER	19
-	1	1338684-2 SHEAR HOLDER, FRONT	13
-	1	3-22280-3 SPRING, COMPRESSION	12
-	1	356885-5 STOP, SHEAR	11
-	1	1-1320921-0 SHEAR HOLDER, FRONT, CUT	10
-	1	318707-1 FLOATING SHEAR, FRONT	9
-	1	1333208-5 ANVIL, COMBINATION .120	8
-	-	-	7
-	-	-	6
-	1	1338680-1 DEPRESSOR, SHEAR	5
-	1	3-238011-5 BLOCK, CRIMPER SPACER	4
-	1	1-655830-7 CRIMPER, INSUL O	3
-	1	1-455888-0 SPACER, CRIMPER	2
-	1	456409-3 CRIMPER, WIRE .120 "F" PREMIUM	1

QTY	UNIT	PART NO	DESCRIPTION	ITEM NO					
-77	-76	-72	-71	-6	-2	-1	PART NO	DESCRIPTION	ITEM NO

DIMENSIONS:	TOLERANCES UNLESS OTHERWISE SPECIFIED:	APPROVED:	DATE:
mm [IN]	0 PLC ±	S. XI	28JAN2011
	1 PLC ±		
	2 PLC ±		
	3 PLC ±		
	4 PLC ±		
	ANGLES ±		
MATERIAL:	FINISH:	WEIGHT:	Customer Accessible Production Drawing

CHK	DATE	NAME	SCALE	SHEET	OF	REV
X. ZHAO	28JAN2011		3:5	1	1	C
S. ZOU	28JAN2011					