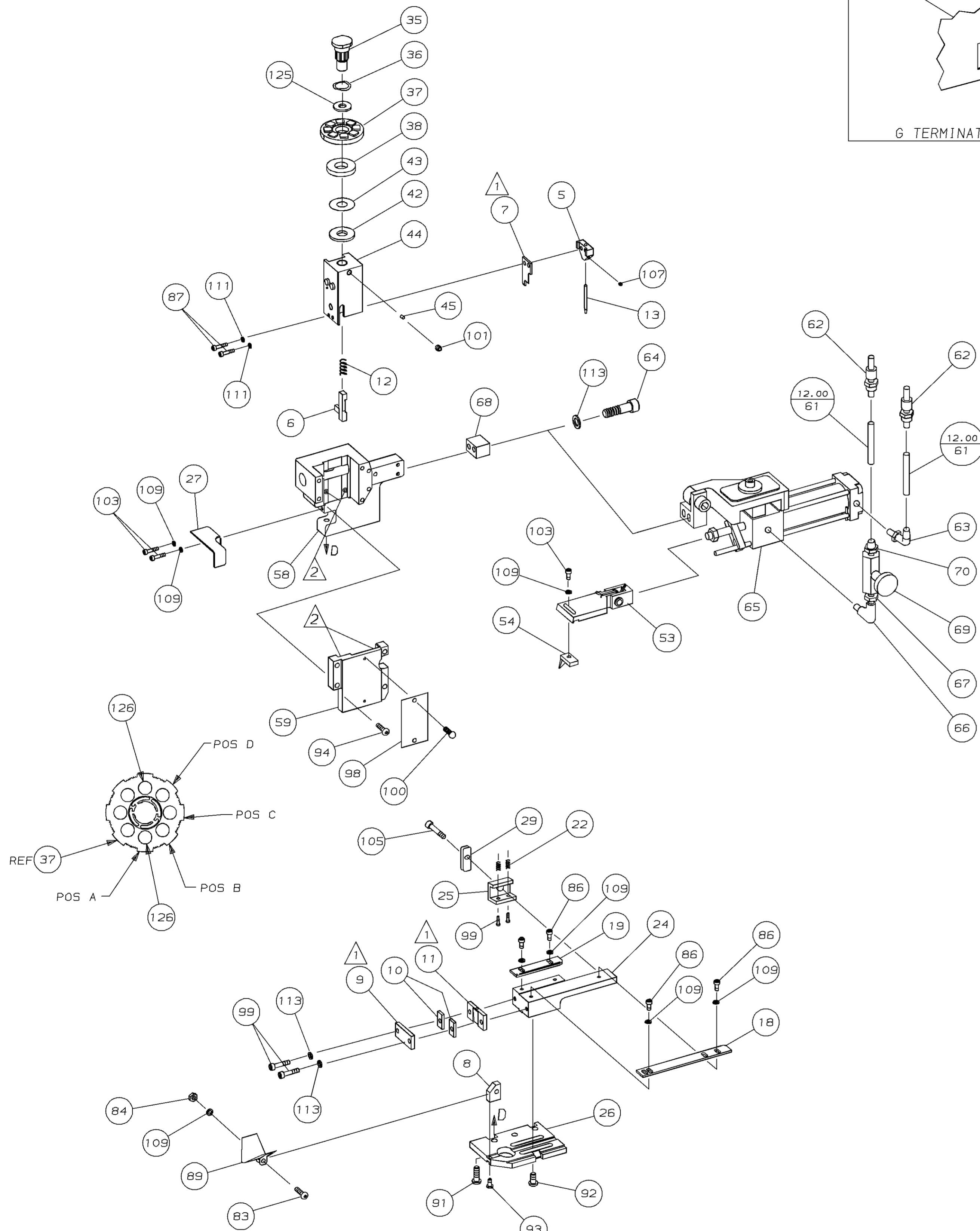
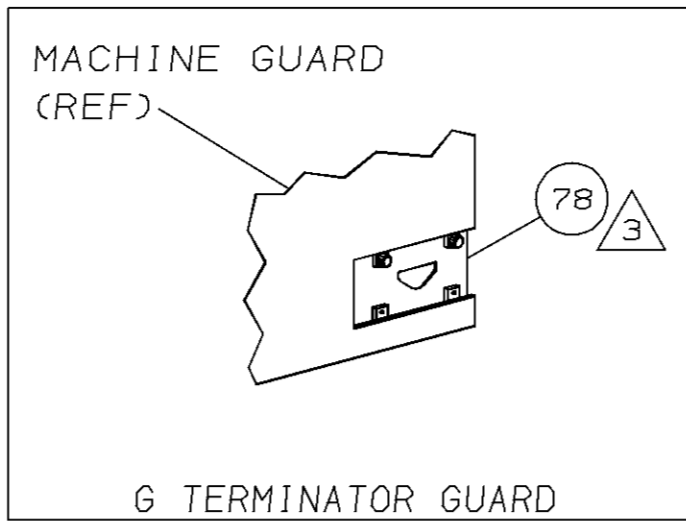


PART NUMBER	REV	FIRST USED
680100-3	A	354500-1



- 1 RECOMMENDED SPARE PARTS.
- 2 GREASE LIGHTLY.
- 3 GUARD MUST BE IN PLACE WHEN OPERATING APPLICATOR IN A BENCH MACHINE.
- 4 SEE DRAWING FOR COMPONENTS
- 5 LOOSE PIECE APPLICATOR. LOOSE PIECE CUT-OFF KIT, 224106-1, MAY BE USED WITH THIS APPLICATOR FOR PRODUCT DETECTION.

TERMINAL NAME:
.250 FASTON™ TAB, L.H. 5

63791-1	63729-1	63793-1

CRIMPING DATA			
PAD LTR	CRIMP HEIGHT	WIRE SIZE	
A	-	-	
B	NOT	USED	
C	NOT	USED	
D	NOT	USED	
CRIMP	SIZE	TYPE	RANGE
WIRE	-	-	-
INSUL	-	-	-
FEED	APPL INST	SET UP GAGE	LAYOUT
1.040	408-8039	458638-1	L1581
TERM APPL SPEC	-	WIRE STRIP LENGTH	-

					129
					128
					127
2	-	C	354779-2	PIN, WIRE DISC (.3000)A	126
1	-	A	986950-1	WASHER, FLAT PRECISION	125
					124
					123
					122
					121
					120
					119
					118
					117
					116
					115
					114
4	-	A	21024-5	WASHER, LOCK (NO. 10) SHEAR PL	113
					112
2	-	A	21024-3	WASHER, LOCK (NO. 6) SLUG BLD	111
					110
8	-	A	21024-4	WASHER, LOCK (NO. 8) ST GUIDE	109
					108
1	-	A	2-21006-8	SCR, SKT SET (6-32x.19) PIN	107
					106
1	-	A	22353-8	SCR, SHLD (Ø.187x.25) DRAG LEVER	105
					104
3	-	A	2-21000-6	SCR, SHC (8-32x.38) FEED HOLDER	103
					102
1	-	A	21009-2	SCR, SKT SET (1/4-20x.25) RAM	101
2	-	A	21017-2	SCR, DRIVE (#2x.19) ID PLATE	100
2	-	A	3-21002-0	SCR, BHC (10-32x.88) DRAG	99
1	-	B	461264-1	PLATE, IDENTIFICATION	98
					97
					96
					95
4	-	A	2-21002-9	SCR, BHC (10-32x.75) CAP	94
1	-	A	22733-8	SCR, BHC (8-32x.38 LW) ANVIL	93
4	-	A	3-21002-3	SCR, BHC (1/4-20x.50) ST GD PL	92
3	-	A	2-22733-8	SCR, BHC (1/4-20x.62) HSG	91
					90
1	-	B	189435-1	CHUTE, PRODUCT	89
					88
					87
2	-	A	2-21000-0	SCR, SHC (6-32x.50) SLUG BLADE	86
7	-	A	2-21002-1	SCR, BHC (8-32x.38) STRIP GUIDE	85
					84
1	-	A	21018-6	NUT, HEX (8-32)	83
1	-	A	2-21002-3	SCR, BHC (8-32x.62) CHUTE	82
					81
2	-	A	3-21000-8	SCR, SKT CAP (10-32x.88) SH PL	80
-	-	-	-	-	79
-	-	B	189437-1	INSERT, GUARD	78
					77
					76
					75
					74
					73
					72
					71

-3 BENCH MODEL G AIRFEED					
-	-	A	985882-1	CONNECTOR, TUBING	70
-	-	A	23054-1	CONTROL, FLOW	69
1	-	A	461690-2	SPACER, AIR FEED	68
-	-	A	22304-1	NIPPLE, HEX	67
-	-	A	22306-1	FITTING, ELBOW	66
1	-	C	224800-2	AIR FEED ASSY	65
2	-	A	4-21000-3	SCR, SHC (10-32x2.00) AIR ASSY	64
1	-	A	983427-6	ELBOW, SWIVEL 1/8NPT - 1/4 T	63
1	-	A	23238-1	QUICK DISCONNECT	62
12.00	IN	A	27319-4	TUBING, POLY-FLO Ø.25	61
					60
1	-	C	454220-1	CAP, RAM	59
1	-	D	453736-1	HOUSING	58
					57
					56
					55
1	-	C	2-694433-8	PAWL, FEED	54
1	-	B	461062-1	FEED FINGER ASSY	53
					52
					51
					50
					49
					48
					47
					46
1	-	A	690191-1	PLUG, NYLON	45
1	-	C	455674-1	RAM	44
1	-	A	690125-1	WASHER, LAMINATED	43
1	-	A	690124-1	WASHER, RAM	42
					41
					40
					39
1	-	A	690223-2	SPACER, INSULATION DISC	38
1	-	D	354777-1	WIRE DISC, PLASTIC	37
1	-	A	22480-5	WASHER, SPRING	36
1	-	B	690212-1	POST, RAM	35
					34
					33
					32
					31
					30
1	-	B	240793-1	LEVER, DRAG RELEASE	29
					28
1	-	B	189436-1	DEFLECTOR, TERMINAL	27
1	-	D	455676-1	PLATE, BASE	26
					25
1	-	B	189517-1	PLATE, STRIP GUIDE	24
					23
2	-	A	1-22284-0	SPRING, DRAG	22
					21
1	-	A	240792-1	DRAG, TERMINAL	20
1	-	C	189518-1	GUIDE, STRIP (REAR)	19
1	-	B	454204-5	GUIDE, STRIP (FRONT)	18
					17
					16
					15
					14
1	-	A	189689-1	PIN, LOCATING	13
1	-	A	23846-1	SPRING, HOLD DOWN	12
1	-	B	189660-1	PLATE, REAR SHEAR	11
2	-	A	224220-1	SPACER, SHEAR PLATE	10
1	-	B	189683-1	PLATE, FRONT SHEAR	9
1	-	A	189434-1	BLOCK, MOUNTING	8
1	-	B	189667-1	BLADE, SLUG	7
1	-	D	5-455892-8	HOLD DOWN, TERMINAL	6
1	-	B	189661-1	HOLDER, SLUG BLADE	5
					4
					3
					2
					1

U/M	DWG SIZE	PART NO	DESCRIPTION	ITEM NO
-3			REVISION OF EACH ASSY NO (WHEN BLANK, USE DWG REVISION)	
QTY REQD PER ASSY		PARTS LIST		

U/M	DWG SIZE	PART NO	DESCRIPTION	ITEM NO
-3			REVISION OF EACH ASSY NO (WHEN BLANK, USE DWG REVISION)	
QTY REQD PER ASSY		PARTS LIST		

LOC A
DIST 66

DIMENSIONS IN INCHES. DO NOT SCALE PRINT. TOLERANCES UNLESS OTHERWISE SPECIFIED:
2 PLC DEC ±.25
3 PLC DEC ±.
4 PLC DEC ±.
ANGLES ±.
SURF TEXTURE: ✓ REMOVE BURRS, BREAK SHARP EDGES R.015 MAX

MATL	HT TR	FIN
-	-	-

DR 5/25/94 APP 8-15-94
R O WILSON T ELBIN
CHK 8-12-94 REL 5/16/95
C ERISMAN B. MORGAN

AMP AMP Incorporated Harrisburg, PA 17105-3608

NAME: **END FEED HDM APPLICATOR** MACHINE REF: **MINI APPL**

SCALE: **D** DWG NO: **680100** SHEET: **1** OF **1** REV: **A**

THIS DRAWING IS A CONTROLLED DOCUMENT FOR AMP INCORPORATED. IT IS SUBJECT TO CHANGE AND THE CONTROLLING ENGINEERING ORGANIZATION SHOULD BE CONTACTED FOR THE LATEST REVISION.

THIS INFORMATION IS CONFIDENTIAL AND IS DISCLOSED TO YOU ON CONDITION THAT NO FURTHER DISCLOSURE IS MADE BY YOU TO OTHER THAN AMP PERSONNEL WITHOUT WRITTEN AUTHORIZATION FROM AMP INCORPORATED, HARRISBURG, PA.