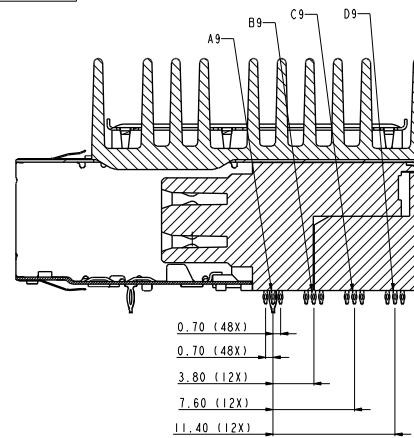
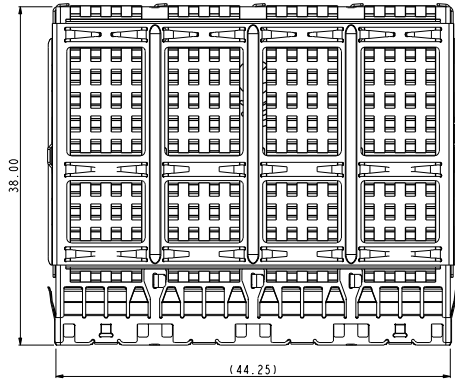
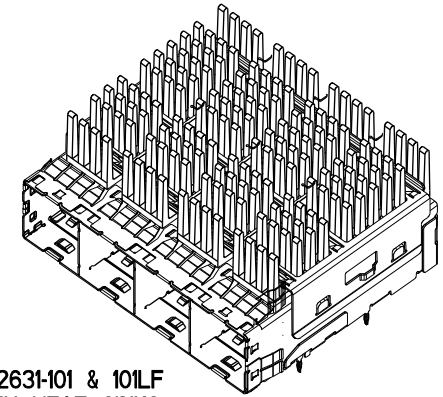


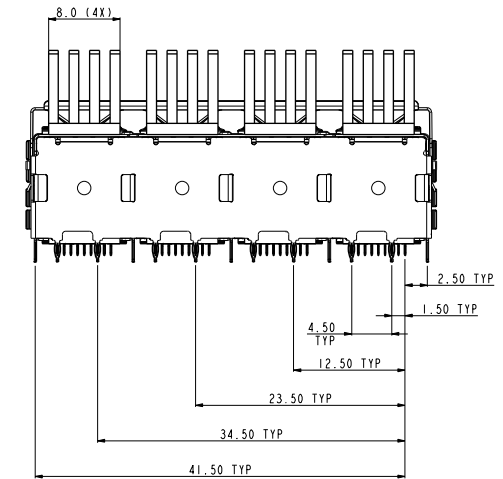
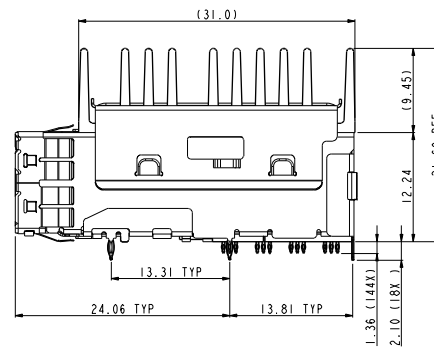
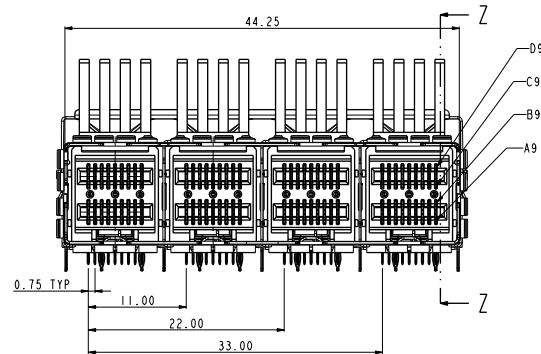
1	2	3	4	5	6	7	8
PRODUCT NUMBER	TAIL PLATING OPTION, SEE NOTE 2	1X4 EXTERNAL ASSEMBLY WITH WINDOWS	HEAT SINK MOUNTING CLIP(1X4)	HEAT SINK			
10112631-101	OPTION 1	10112628-103	10112656-001LF	10112655-001LF			
10112631-101LF	OPTION 2	10112628-103LF					



SECTION Z-Z
SCALE 3.000



10112631-101 & 101LF
WITH HEAT SINKS



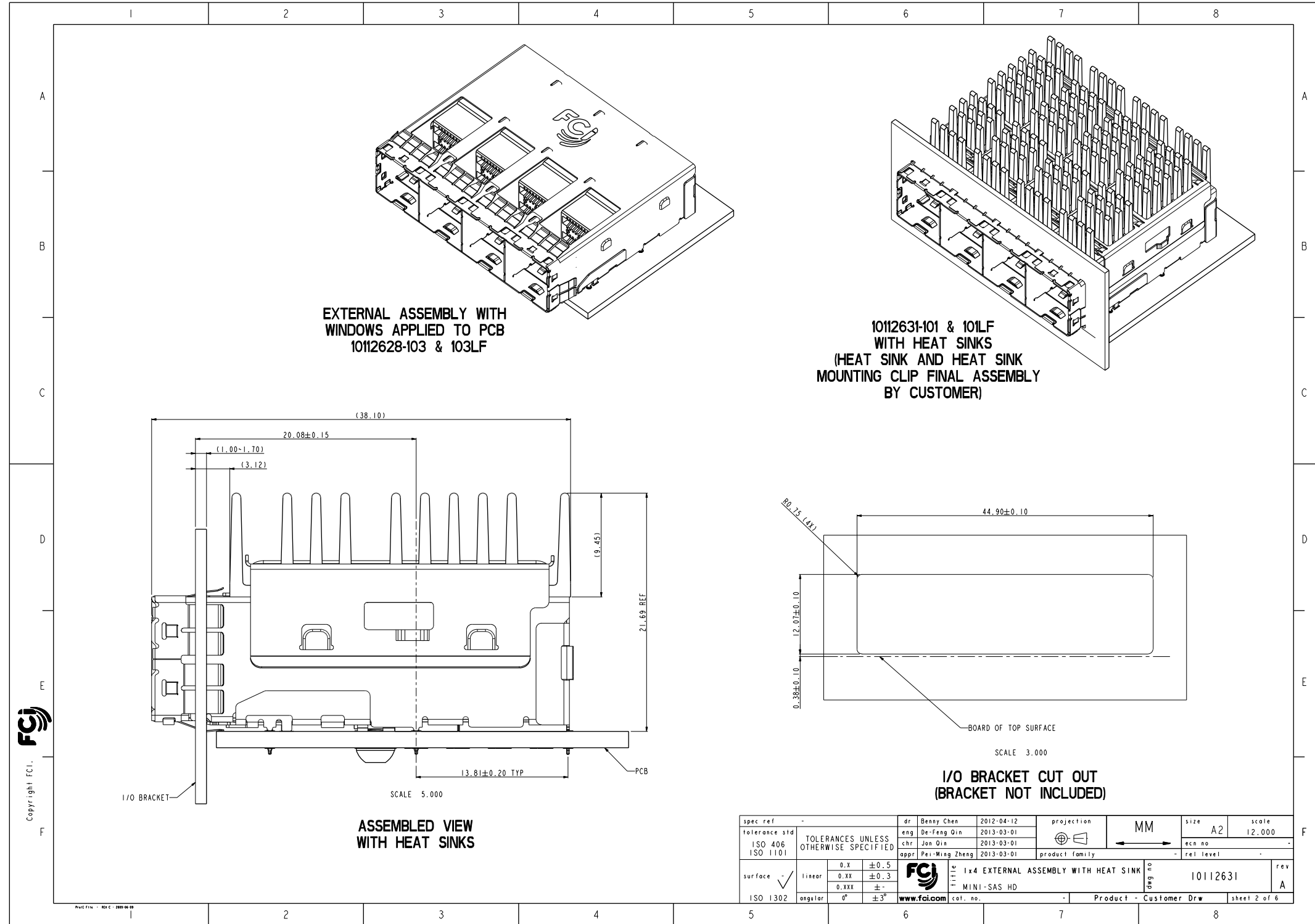
NOTES:

- MATERIALS:
CONNECTOR HOUSING: HIGH TEMPERATURE THERMOPLASTIC
GLASS FILLED, UL 94V-0
EMI CAGE: NICKEL SILVER ALLOY
EMI FINGERS: COPPER ALLOY
TERMINALS: COPPER ALLOY
HEAT SINK CLIP: STAINLESS STEEL
HEAT SINK: ALUMINIUM ALLOY
- FINISHES:
EMI FINGERS: 0.50um MIN NICKEL
CONTACT AREA: 0.16um MIN GOLD OVER 2.54um MIN NICKEL TAIL AREA:
OPTION 1: 0.16um - 1.52um TIN/LEAD (90/10) OVER 2.54um MIN NICKEL
OPTION 2: 0.76um - 1.52um TIN (LEAD FREE) OVER 2.54um MIN NICKEL
- PRODUCT SPECIFICATION: GS-12-651.
- PRODUCT PACKING SPECIFICATION: GS-14-1490.
EXTERNAL ASSEMBLY WITH WINDOWS WILL BE IN ONE BOX.
HEAT SINK AND HEAT SINK MOUNTING CLIP WILL BE IN EACH ONE BOX.
TOTAL THREE BOXES WILL BE IN A MASTER CARTON.
- APPLICATION SPECIFICATION: GS-20-0327.
- MOUNTING HARDWARE: M2X0.4 BUTTON HEAD SCREW
MOUNTING SCREW LENGTH: BOARD THICKNESS + 1.4mm MAX (0.9mm MIN).
4 REQUIRED PER ASSEMBLY.
MOUNTING HARDWARE NOT SUPPLIED.
- THIS CONNECTOR IS DESIGNED TO MEET THE REQUIREMENTS OF
INDUSTRY SPECIFICATION SFF-8644.
- HEAT SINK AND HEAT SINK MOUNTING CLIP FINAL ASSEMBLY
AFTER EXTERNAL ASSEMBLY WITH WINDOW APPLIED TO PCB.

MATES WITH
MINI-SAS HD ENDS IN:

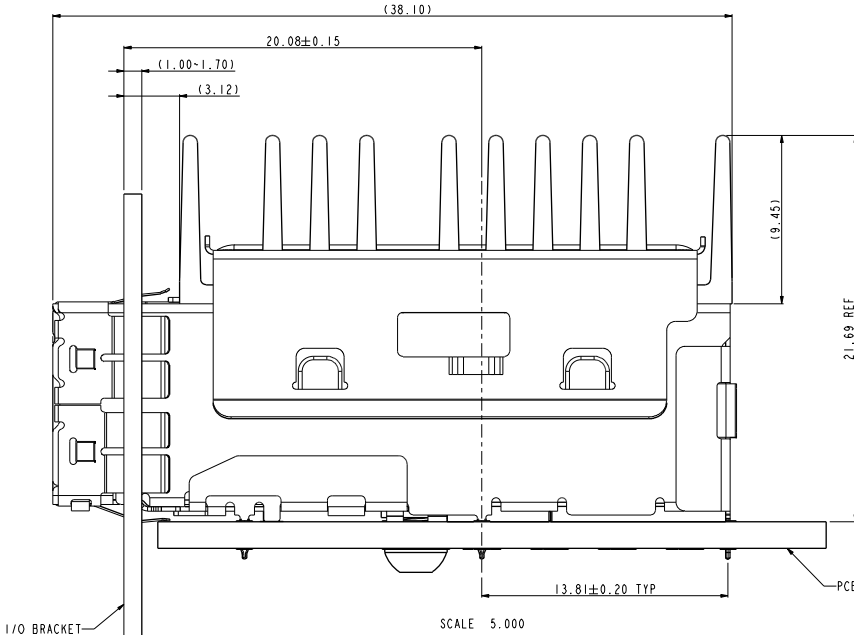
10112041 SERIES (4X)
10117771 SERIES (4X)
10117946 SERIES (4X)
10117949 SERIES (4X)
10117947 SERIES (8X)
10112359 SERIES (8X)
10117950 SERIES (8X)
10117948 SERIES (8X)

spec ref	-	dr	Benny Chen	2012-04-12	projection	MM	size	A2	scale	4.000	
tolerance std	ISO 406 ISO 1101	eng	De-Feng Qin	2013-03-01			ecn no	-	rel level	-	
		chr	Jon Qin	2013-03-01			product family	-			
surface	linear	appr	Pei-Ming Zheng	2013-03-01			title	1x4 EXTERNAL ASSEMBLY WITH HEAT SINK		rev	A
ISO 1302	angular	cat. no.	www.fci.com	-			cat. no.	10112631	Product - Customer Drw		sheet 1 of 6

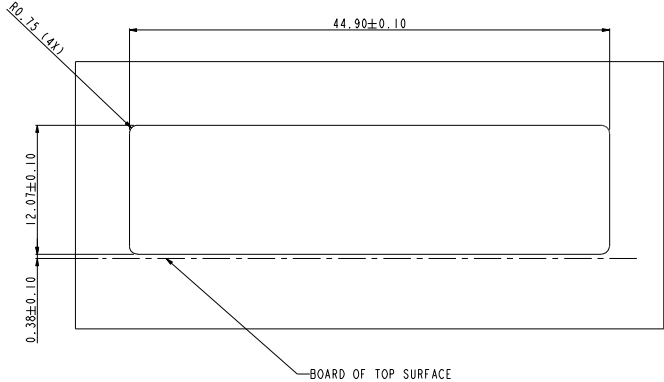


EXTERNAL ASSEMBLY WITH
WINDOWS APPLIED TO PCB
1012628-103 & 103LF

1012631-101 & 101LF
WITH HEAT SINKS
(HEAT SINK AND HEAT SINK
MOUNTING CLIP FINAL ASSEMBLY
BY CUSTOMER)



ASSEMBLED VIEW
WITH HEAT SINKS



I/O BRACKET CUT OUT
(BRACKET NOT INCLUDED)

spec ref	-	dr	Benny Chen	2012-04-12	projection	MM	size	A2	scale	12.000
tolerance std	ISO 406 ISO 1101	eng	De-Feng Qin	2013-03-01			ecm no	-	rel level	-
TOLERANCES UNLESS OTHERWISE SPECIFIED		chr	Jon Qin	2013-03-01			product family	-	rel level	-
surface	linear	0.X	±0.5	appr			Pei-Ming Zheng	2013-03-01	title	1x4 EXTERNAL ASSEMBLY WITH HEAT SINK
ISO 1302	angular	0°	±3°	www.fcj.com	cat. no.	-	Product - Customer Drw	10112631	sheet 2 of 6	

A

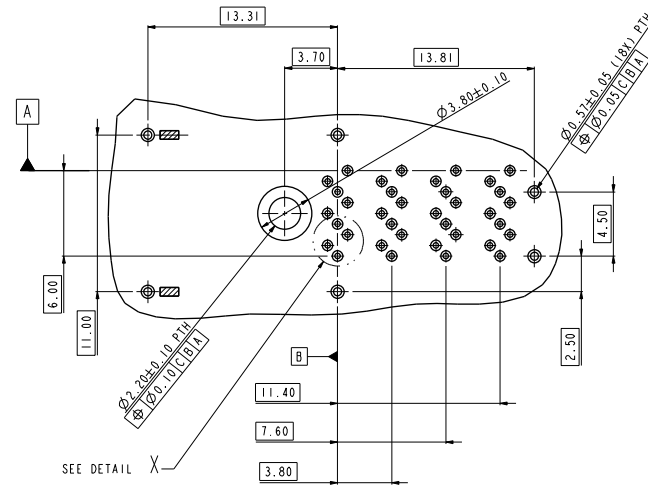
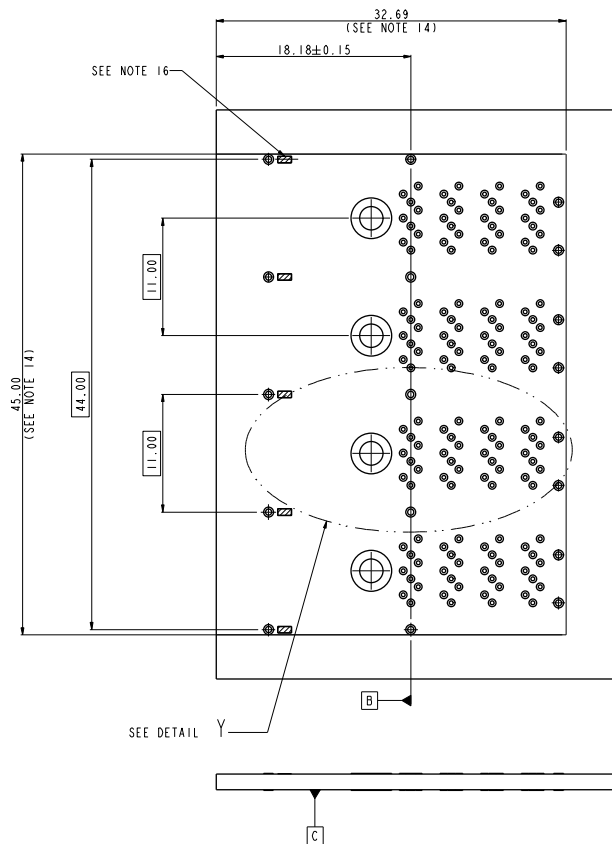
B

C

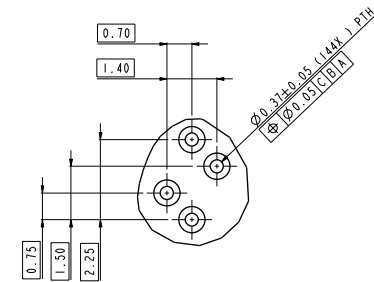
D

E

F



DETAIL Y
SCALE 4.000



DETAIL X
SCALE 10.000

RECOMMENDED BOARD LAYOUT
SEE SFF-8644 FOR DETAIL

NOTES:

- 9. RECOMMENDED DRILL SIZE FOR $\varnothing 0.37$ FINISHED PTH IS $\varnothing 0.457$.
- 10. RECOMMENDED ANNULAR RING AROUND $\varnothing 0.37$ FINISHED PTH IS $\varnothing 0.73$.
- 11. RECOMMENDED DRILL SIZE FOR $\varnothing 0.57$ FINISHED PTH IS $\varnothing 0.68$.
- 12. RECOMMENDED ANNULAR RING AROUND $\varnothing 0.57$ FINISHED PTH IS $\varnothing 0.93$.
- 13. MINIMUM RECOMMENDED CENTER TO CENTER SPACING BETWEEN ADJACENT CONNECTORS: 47.00mm.
- 14. CONNECTOR KEEP OUT AREA.
- 15. MINIMUM PCB THICKNESS: 1.57mm.
- 16. CAGE STAND OFF AREA, NO TRACES ON SURFACE OF PCB IN THE AREAS.

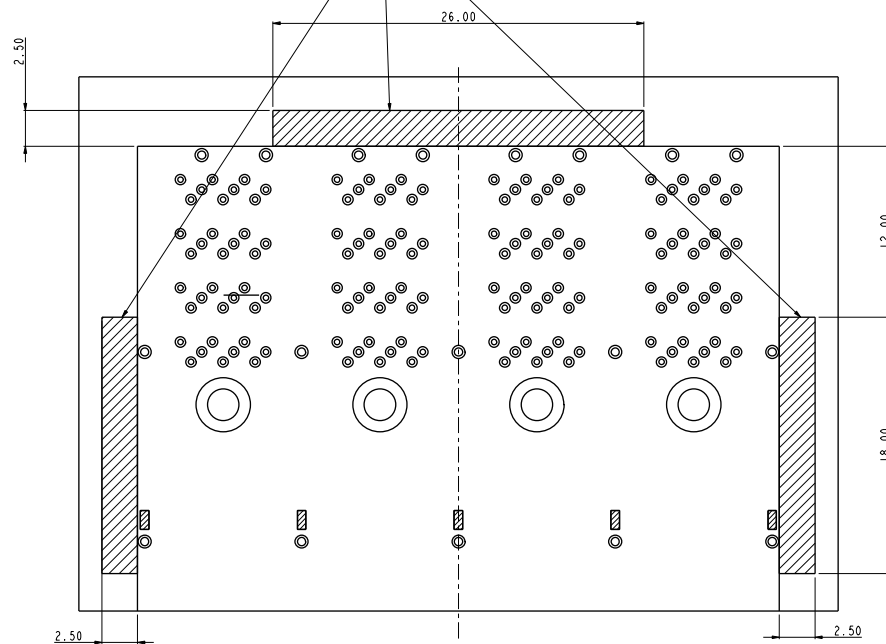
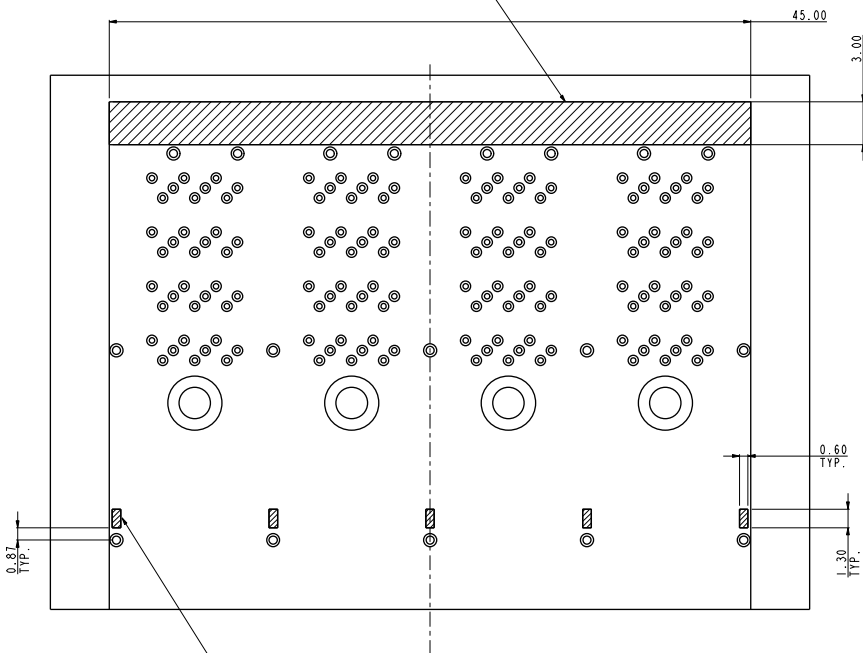
Copyright FCI.
FCI

spec ref	-	dr	Benny Chen	2012-04-12	projection	MM	size	A2	scale	12.000	
tolerance std	ISO 406 ISO 1101	eng	De-Feng Qin	2013-03-01			ecn no	-	rel level	-	
TOLERANCES UNLESS OTHERWISE SPECIFIED		chr	Jon Qin	2013-03-01			product family	-	rel level	-	
surface	linear	appr	Pei-Ming Zheng	2013-03-01			title	1x4 EXTERNAL ASSEMBLY WITH HEAT SINK		rev	A
ISO 1302	angular	cat. no.	www.fci.com	-			MINI-SAS HD	dwg no	10112631	sheet 3 of 6	

RECOMMENDED KEEP OUT AREAS

RECOMMENDED INSERTION TOOL
KEEP OUT AREA
NO COMPONENTS IN THIS AREA
MORE THAN 7.50mm TALL

RECOMMENDED EXTRACTION TOOL
KEEP OUT AREA
NO COMPONENTS IN THESE AREAS

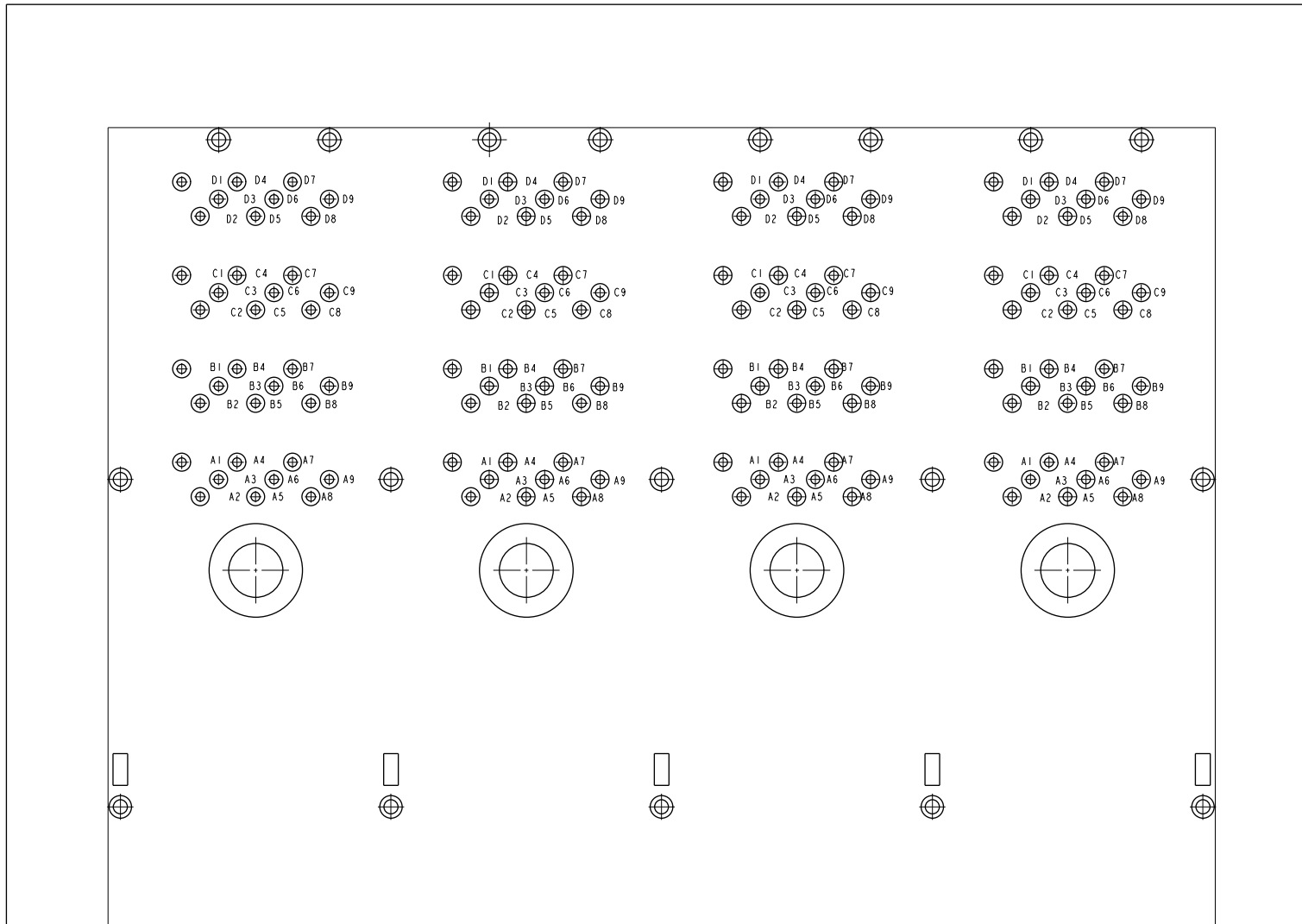


CAGE STAND OFF KEEP OUT AREA

Copyright FCI
FCI

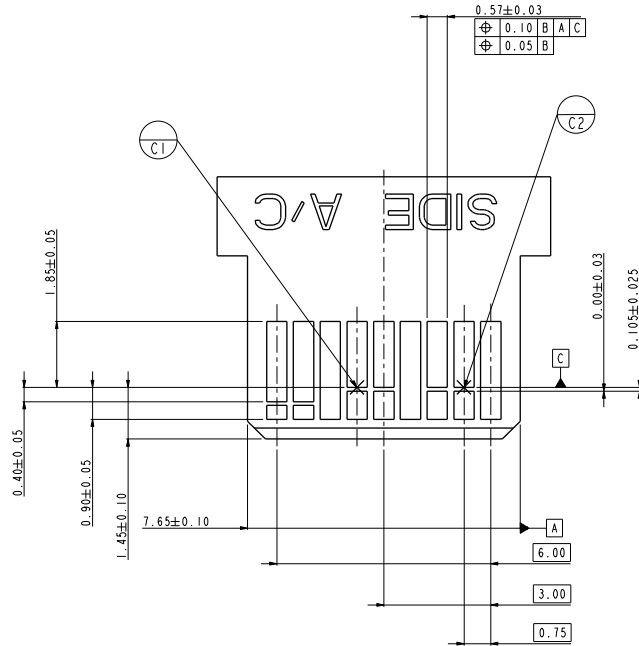
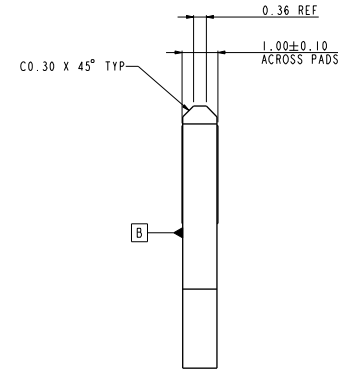
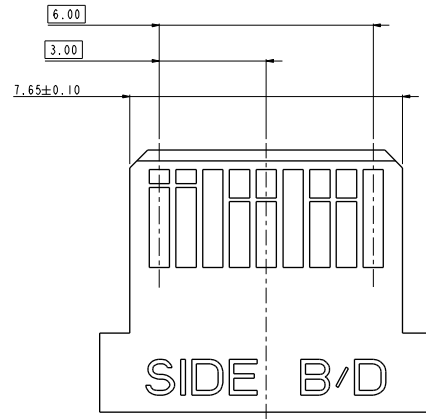
spec ref	-	dr	Benny Chen	2012-04-12	projection	MM	size	A2	scale	12.000
tolerance std	ISO 406 ISO 1101	eng	De-Feng Qin	2013-03-01			ecn no	-	rel level	-
TOLERANCES UNLESS OTHERWISE SPECIFIED		chr	Jon Qin	2013-03-01			product family	-	rel level	-
		appr	Pei-Ming Zheng	2013-03-01			product family	-	rel level	-
surface	linear	0.X	±0.5		1x4 EXTERNAL ASSEMBLY WITH HEAT SINK MINI-SAS HD	cat. no.	diag no	10112631	rev	A
		0.XX	±0.3				Product - Customer Drw	sheet 4 of 6		
	angular	0°	±3°				www.fci.com			

PIN OUT DESIGNATIONS



Copyright FCI.
FCI

spec ref	-	dr	Benny Chen	2012-04-12	projection	MM	size	A2	scale	12.000	
tolerance std	ISO 406 ISO 1101	eng	De-Feng Qin	2013-03-01	chr	Jon Qin	2013-03-01	ecm no	-	rel level	-
TOLERANCES UNLESS OTHERWISE SPECIFIED		appr	Pei-Ming Zheng	2013-03-01	product family						
surface	linear	0.X	±0.5	FCI	1x4 EXTERNAL ASSEMBLY WITH HEAT SINK		10112631	rev		A	
		0.XX	±0.3		MINI-SAS HD						
	angular	0°	±3°		www.fcicom cat. no.						
ISO 1302								Product - Customer Drw	sheet 5 of 6		



RECOMMENDED PLUG PADDLE CARD
SEE SFF-8644 FOR DETAIL

- NOTES:
- 17. 0.05 MINIMUM KEEP OUT FOR SOLDER MASK AROUND ALL PADS.
 - 18. DATUM C TARGETS ARE DEFINED BY THE RESPECTIVE PAD CENTER LINES AND THE LEADING EDGE OF THE TARGET PADS.

spec ref	-	dr	Benny Chen	2012-04-12	projection	MM	size	A2	scale	12.000
tolerance std	ISO 406 ISO 1101	eng	De-Feng Qin	2013-03-01			ecn no	-	rel level	-
	TOLERANCES UNLESS OTHERWISE SPECIFIED	chr	Jon Qin	2013-03-01						
surface	linear	appr	Pei-Ming Zheng	2013-03-01			1x4 EXTERNAL ASSEMBLY WITH HEAT SINK MINI-SAS HD		10112631 10112631	rev A
ISO 1302	angular	0°	±3°	www.fcj.com	cat. no.	-	Product - Customer Drw	sheet 6 of 6		

