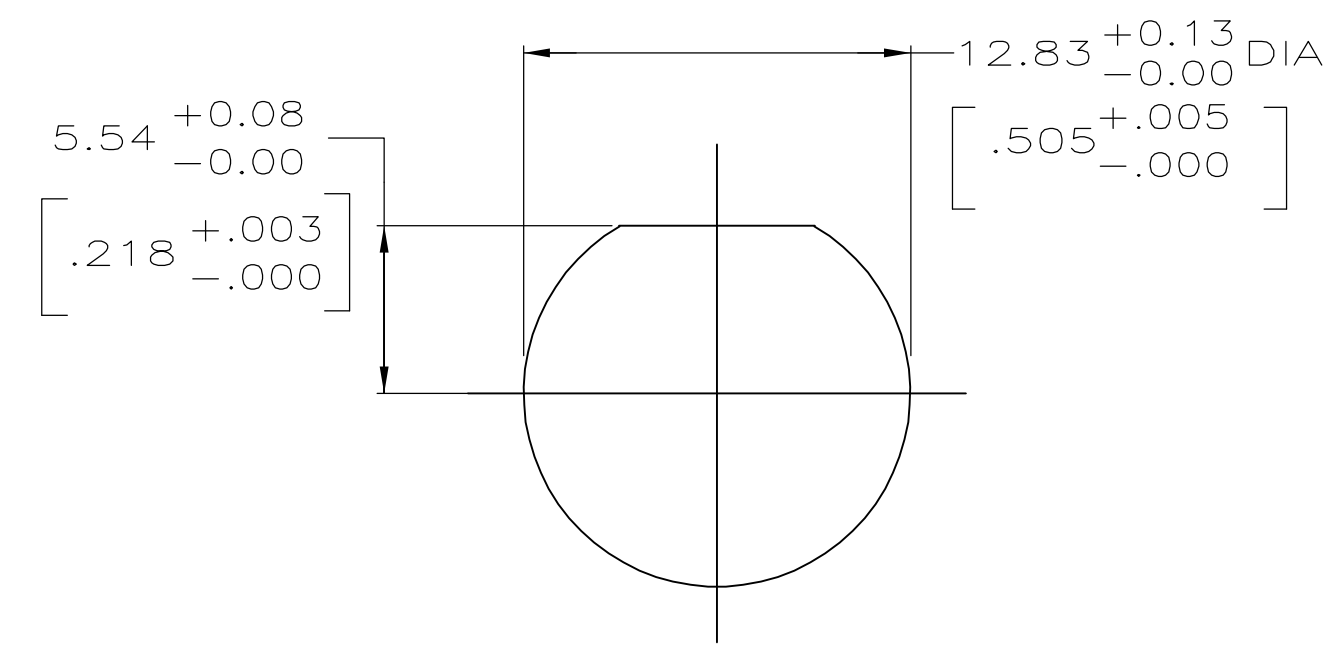
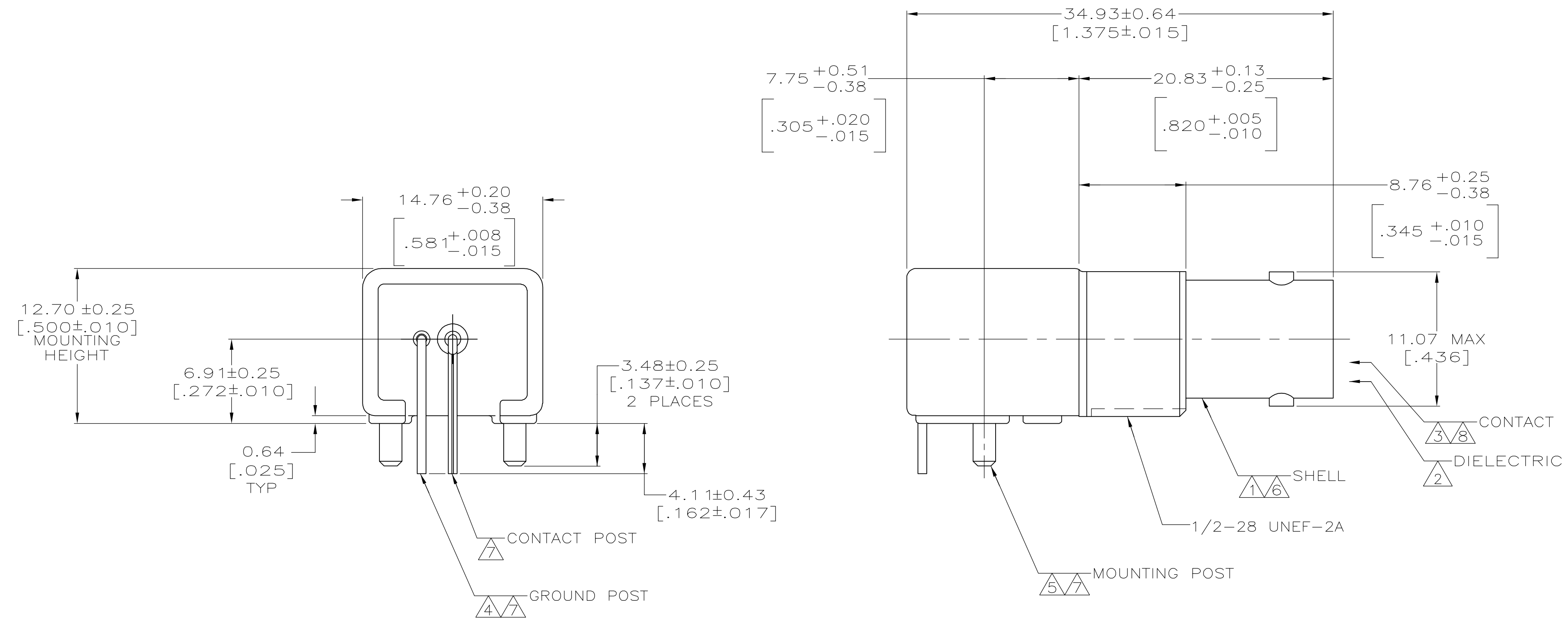
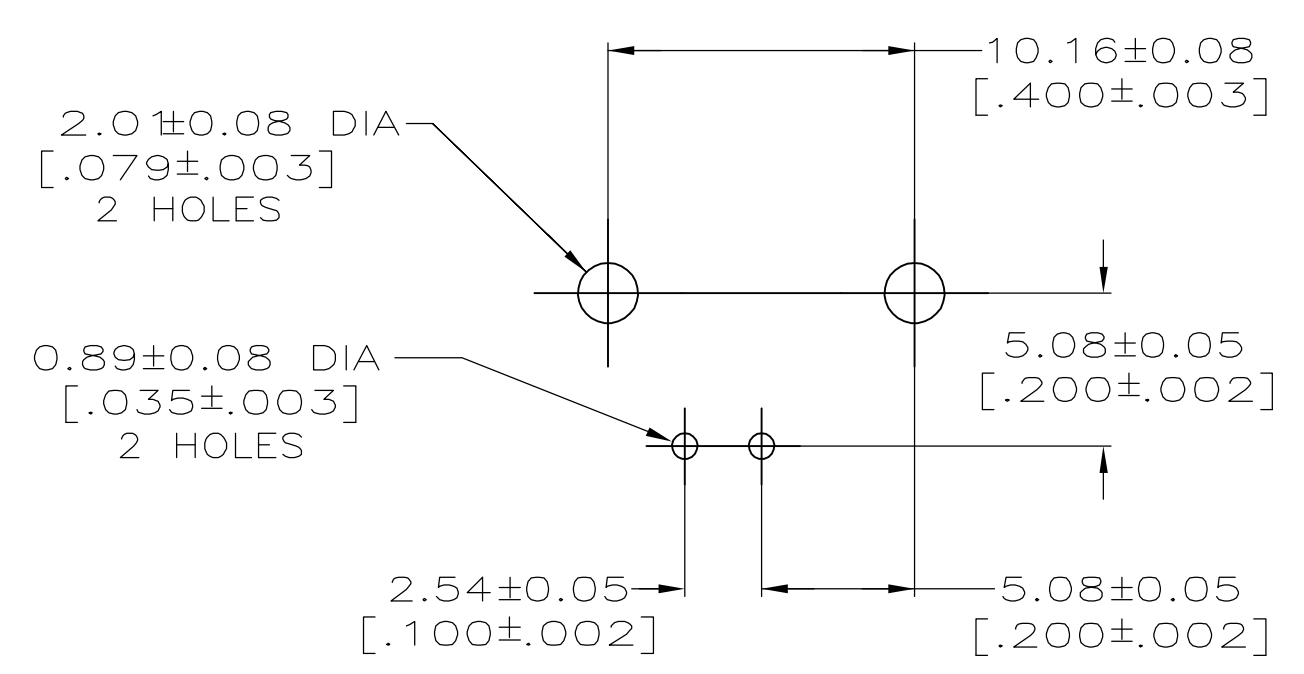


LOC		DIST		REVISIONS				
PL	LTR	DATE	DWN	APPD				
AJ	16			A	REVISED PER EC 0514-0150-05	20OCT2005	REH	JL

- ① ZINC PER QQ-Z-363.
- ② POLYMETHYLPENTENE PER ASTM-D-1238.
- ③ PHOSPHOR BRONZE PER QQ-B-750.
- ④ BRASS PER ASTM-B-453.
- ⑤ BRASS PER ASTM-B-16.
- ⑥ NICKEL PLATE PER QQ-N-290, 3.81μm [.000150] MINIMUM THICK.
- ⑦ TIN PLATE PER ASTM-B-545, 3.81μm [.000150] MINIMUM THICK.
- ⑧ GOLD PLATE PER ASTM-B-488, 0.76μm [.000030] MINIMUM THICK.
- 9. SEE INSTRUCTION SHEET 408-2769.



RECOMMENDED PANEL CUTOUT



PCB CONFIGURATION

6274084-1  
 PART NUMBER

THIS DRAWING IS A CONTROLLED DOCUMENT.		DWN J. ALCORTA - 28APR2005	Tyco Electronics Corporation Harrisburg, PA 17105-3608	
DIMENSIONS: mm (INCHES)		CHK J. HAVENER - 28APR2005	APPROVED J. LIPPERT - 28APR2005	
TOLERANCES UNLESS OTHERWISE SPECIFIED:		NAME JACK, RIGHT ANGLE, PCB 75 OHM, SERIES BNC		
0 PLC ± -	1 PLC ± -	PRODUCT SPEC		
2 PLC ± 0.20 [.008]	3 PLC ± -	APPLICATION SPEC		
4 PLC ± -	ANGLES ± -	SIZE CAGE CODE DRAWING NO		
MATERIAL SEE NOTES 1 THRU 5		WEIGHT -		RESTRICTED TO
FINISH SEE NOTES 6 THRU 8		A1 00779 ©=6274084		1
CUSTOMER DRAWING		SCALE 1:1		SHEET 1 OF 1 REV A