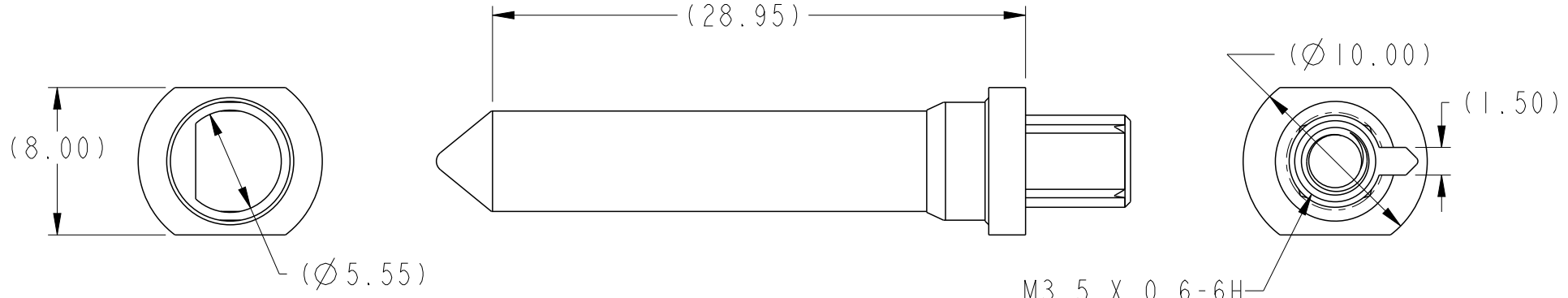
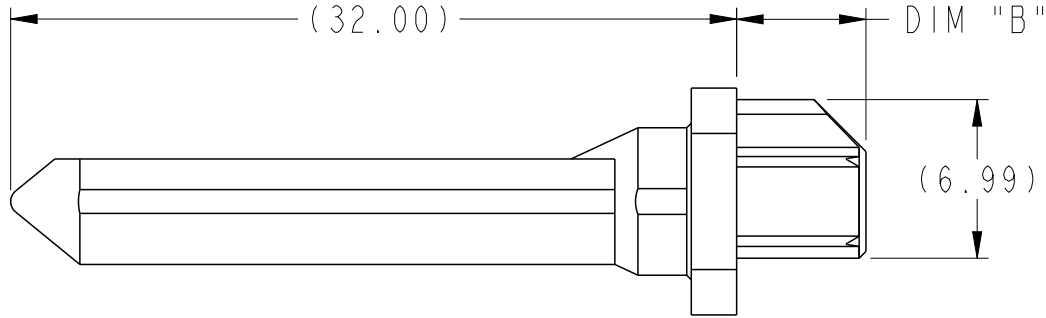


PRODUCT NUMBER
SEE TABLE, SHT 3

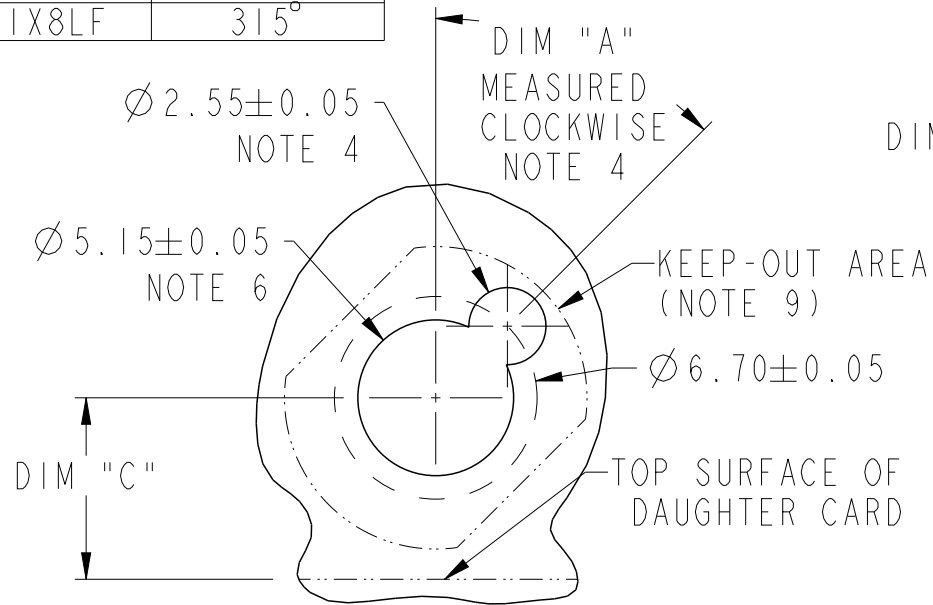


M3.5 X 0.6-6H
SEE TABLE DIM "D"
△H FOR MIN THREAD DEPTH

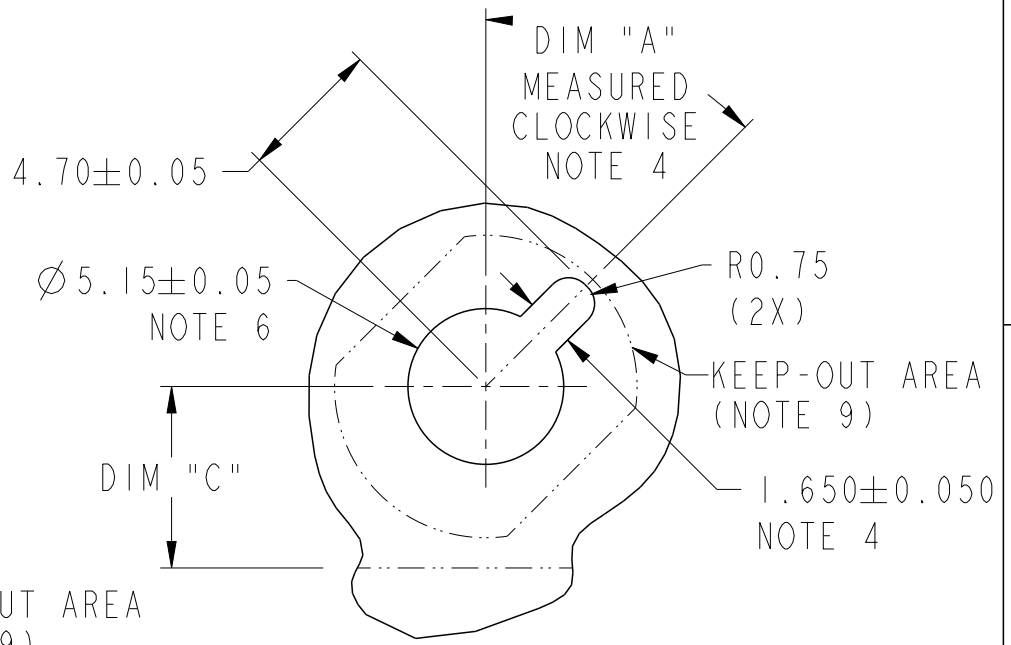
spec ref	-	dr	Chen-Hong Tan	2005/08/18	projection 	MM ←→	size	A4	scale	3:1			
tolerance std	TOLERANCES UNLESS OTHERWISE SPECIFIED	eng	N Anandakumar	2016/12/02			ecn no	ELX-S-25501-1					
ASME Y14.5		chr	-	-			rel level	Released					
surface	3.200	appr	Chen-Hong Tan	2016/12/12	product family	AirMax Accessories							
ASME Y14.5	linear	Amphenol FCi			title	10.8mm GUIDE PIN, INTERNAL THREAD		dwg no	10037911		rev	H	
													0.X
	0.XX												±0.10
	0.XXX	±0.05											
	angular	0°	±2°	cat. no.	-	Product - Customer Drw	sheet 1 of 3						

Creo File - REV E - 2016-02-12

10.8 MM RECEPTACLE GUIDE MODULE NOTE 4		DIM "A"
10037912-1X1LF	0°	
10037912-1X2LF	45°	
10037912-1X3LF	90°	
10037912-1X4LF	135°	
10037912-1X5LF	180°	
10037912-1X6LF	225°	
10037912-1X7LF	270°	
10037912-1X8LF	315°	



RECOMMENDED PCB LAYOUT (DRILLING)
NOTES 4, 5 & 6
SCALE 4:1



RECOMMENDED PCB LAYOUT (MILLING)
NOTE 4, 5 & 6
SCALE 4:1

Amphenol
FCi

© 2016 AFCI

spec ref -		dr Chen-Hong Tan		2005/08/18		projection		size A4		scale 1:1	
tolerance std ASME Y14.5		eng N Anandakumar		2016/12/02						ecn no ELX-S-25501-1	
TOLERANCES UNLESS OTHERWISE SPECIFIED		chr -		-						rel level Released	
surface -		appr Chen-Hong Tan		2016/12/12		product family -		dwg no 10037911		rev H	
ASME Y14.5		linear		0.X ±0.3		-		-		sheet 2 of 3	
				0.XX ±0.10							
				0.XXX ±0.05							
		angular		0° ±2°							
		Amphenol FCI		title 10.8mm GUIDE PIN, INTERNAL THREAD		cat. no. -		Product - Customer Drw			

Creo File - REV E - 2016-02-12

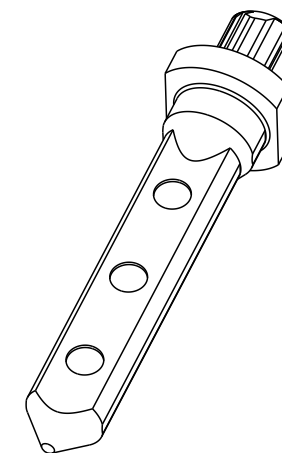
A

B

C

D

PRODUCT NUMBER	DIM "B"	DIM "C" 4/5 PAIR	DIM "C" 2/3 PAIR	DIM "D"
10037911-101LF	5.70	6.00	4.50	6.60
10037911-102LF	2.75	6.00	4.50	4.10
10037911-103LF	3.20	6.00	4.50	4.10
10037911-104LF	2.40	6.00	4.50	4.10



1. MATERIAL: ZINC ALLOY
2. FINISH: ZINC YELLOW CHROMATE
3. APPLICATION SPECIFICATION: GS-20-045
- ④ KEY HOLE ORIENTATION (DIM "A") WILL BE DEFINED BY THE MATING RECEPTACLE GUIDE MODULE PART NUMBER - SEE TABLE (ORIENTATION SHOWN IS FOR 10037912-1X2LF)
- ⑤ REFER TO CUSTOMER DRAWING 10035911 FOR INFORMATION REGARDING PCB LAYOUT OF POWER AND GUIDE MODULES RELATIVE TO SIGNAL MODULES
- ⑥ THRU HOLE PLATING AND ANNULAR RINGS MUST BE ADDED IN APPLICATIONS THAT USE THE ESD GROUNDING OPTION FINISHED HOLE SIZE IS THE SAME REGARDLESS OF PLATED BARREL OR NOT.
7. THIS PRODUCT MEETS EUROPEAN UNION DIRECTIVES AND OTHER COUNTRY REGULATIONS AS DESCRIBED IN GS-22-008.
8. PACKAGING MEETS GS-14-920 LEAD FREE LABELING SPECIFICATION.
- ⑨ KEEP OUT ZONE MATCH PROFILE OF SEATED GUIDE PIN, SEE SHEET 1 FOR REFERENCE DIMENSIONS OF GUIDE PIN OUTLINE.
10. A SYMBOL WILL BE NEXT TO ANY DIMENSION, VIEW OR NOTE WHICH HAS BEEN MODIFIED WITH THE CURRENT DRAWING REVISION.

spec ref	-			dr	Chen-Hong Tan	2005/08/18	projection 	MM 	size	A4	scale	3:1	
tolerance std	TOLERANCES UNLESS OTHERWISE SPECIFIED			eng	N Anandakumar	2016/12/02			ecn no	ELX-S-25501-1			
ASME Y14.5				chr	-	-			rel level	Released			
surface	3.200	linear	0.X	±0.3	appr	Chen-Hong Tan	2016/12/12	product family	AirMax Accessories			rev	
ASME Y14.5	angular		0°	±2°					title	10.8mm GUIDE PIN, INTERNAL THREAD			dwg no
					cat. no.	-	Product - Customer Drw				sheet 3 of 3		