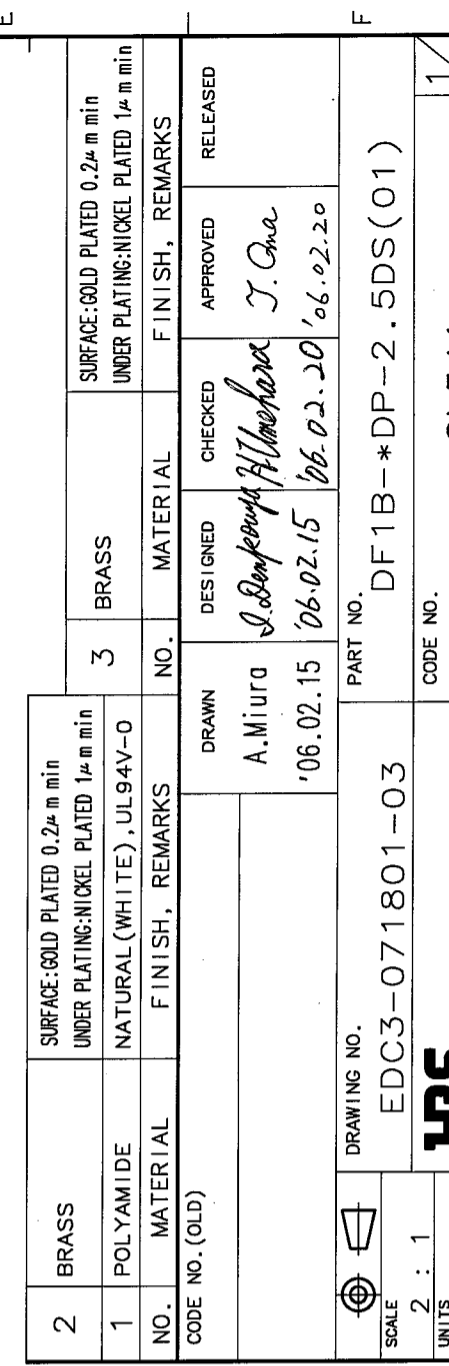
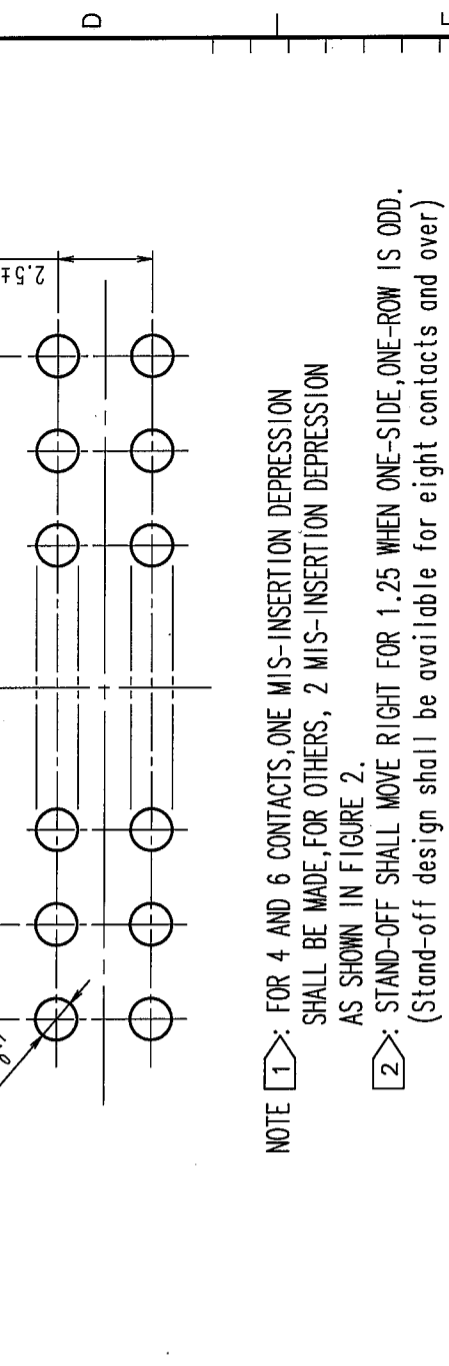
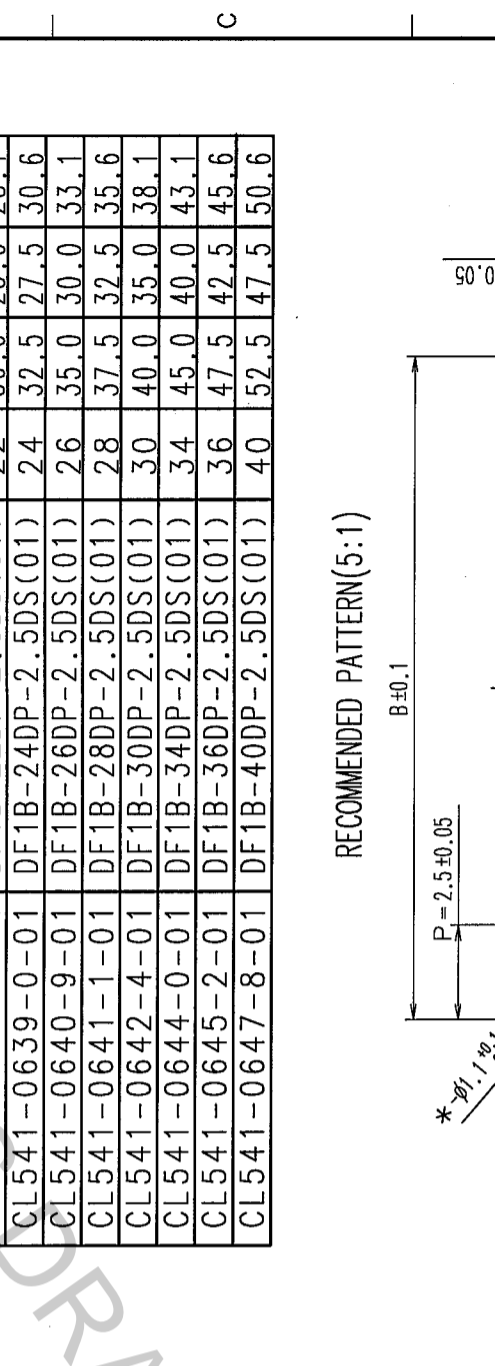
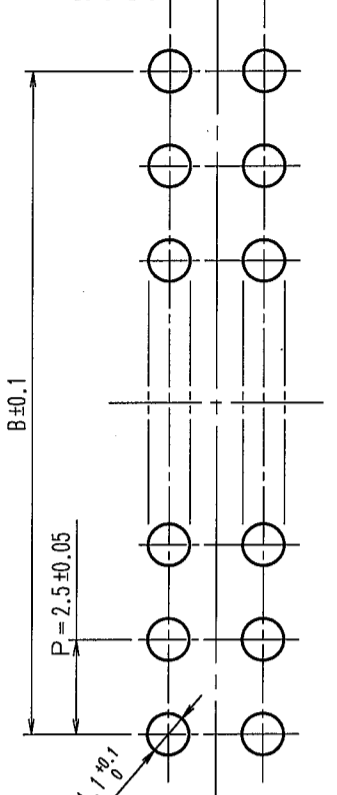


| COUNT | DESCRIPTION OF REVISIONS | BY | CHKD | DATE | COUNT | DESCRIPTION OF REVISIONS | BY | CHKD | DATE |
|-------|--------------------------|----|------|------|-------|--------------------------|----|------|------|
| △ | | | | | △ | | | | |
| △ | | | | | △ | | | | |
| △ | | | | | △ | | | | |

| CODE NO | PART NO | CONTACT | A | B | C |
|-----------------|---------------------|---------|------|------|------|
| CL541-0654-3-01 | DF1B-4DP-2.5DS(01) | 4 | 7.5 | 2.5 | 5.6 |
| CL541-0655-6-01 | DF1B-6DP-2.5DS(01) | 6 | 10.0 | 5.0 | 8.1 |
| CL541-0656-9-01 | DF1B-8DP-2.5DS(01) | 8 | 12.5 | 7.5 | 10.6 |
| CL541-0632-0-01 | DF1B-10DP-2.5DS(01) | 10 | 15.0 | 10.0 | 13.1 |
| CL541-0633-3-01 | DF1B-12DP-2.5DS(01) | 12 | 17.5 | 12.5 | 15.6 |
| CL541-0634-6-01 | DF1B-14DP-2.5DS(01) | 14 | 20.0 | 15.0 | 18.1 |
| CL541-0635-9-01 | DF1B-16DP-2.5DS(01) | 16 | 22.5 | 17.5 | 20.6 |
| CL541-0636-1-01 | DF1B-18DP-2.5DS(01) | 18 | 25.0 | 20.0 | 23.1 |
| CL541-0637-4-01 | DF1B-20DP-2.5DS(01) | 20 | 27.5 | 22.5 | 25.6 |
| CL541-0638-7-01 | DF1B-22DP-2.5DS(01) | 22 | 30.0 | 25.0 | 28.1 |
| CL541-0639-0-01 | DF1B-24DP-2.5DS(01) | 24 | 32.5 | 27.5 | 30.6 |
| CL541-0640-9-01 | DF1B-26DP-2.5DS(01) | 26 | 35.0 | 30.0 | 33.1 |
| CL541-0641-1-01 | DF1B-28DP-2.5DS(01) | 28 | 37.5 | 32.5 | 35.6 |
| CL541-0642-4-01 | DF1B-30DP-2.5DS(01) | 30 | 40.0 | 35.0 | 38.1 |
| CL541-0644-0-01 | DF1B-34DP-2.5DS(01) | 34 | 45.0 | 40.0 | 43.1 |
| CL541-0645-2-01 | DF1B-36DP-2.5DS(01) | 36 | 47.5 | 42.5 | 45.6 |
| CL541-0647-8-01 | DF1B-40DP-2.5DS(01) | 40 | 52.5 | 47.5 | 50.6 |



RECOMMENDED PATTERN(5:1)



NOTE 1: FOR 4 AND 6 CONTACTS, ONE MIS-INSERTION DEPRESSION SHALL BE MADE, FOR OTHERS, 2 MIS-INSERTION DEPRESSION AS SHOWN IN FIGURE 2.
 2: STAND-OFF SHALL MOVE RIGHT FOR 1.25 WHEN ONE-SIDE, ONE-ROW IS ODD. (Stand-off design shall be available for eight contacts and over)

| NO. | MATERIAL | FINISH, REMARKS | NO. | MATERIAL | FINISH, REMARKS |
|-----|-----------|--|-----|----------|--|
| 2 | BRASS | SURFACE: GOLD PLATED 0.2μm min UNDER PLATING: NICKEL PLATED 1μm min | 3 | BRASS | SURFACE: GOLD PLATED 0.2μm min UNDER PLATING: NICKEL PLATED 1μm min |
| 1 | POLYAMIDE | NATURAL (WHITE), UL94V-0 | | | |

| CODE NO. (OLD) | FINISH, REMARKS | NO. | MATERIAL | FINISH, REMARKS |
|----------------|-----------------|-----|----------|-----------------|
| | | | | |

| DESIGNED | CHECKED | APPROVED | RELEASED |
|-----------|-----------------------|-----------|-----------|
| A. Miura | S. Banerjee/H. Uehara | J. Owa | |
| '06.02.15 | '06.02.15 | '06.02.20 | '06.02.20 |

| DRAWING NO. | PART NO. |
|----------------|--------------------|
| EDC3-071801-03 | DF1B-*DP-2.5DS(01) |

| SCALE | UNITS | ITM |
|-------|-------|-----|
| 2 : 1 | mm | |

| CODE NO. |
|----------|
| CL541 |

TO