

PRODUCT NUMBER	PITCH
KDxx10x100J0G	3.50 mm

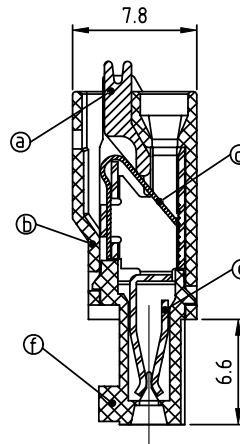
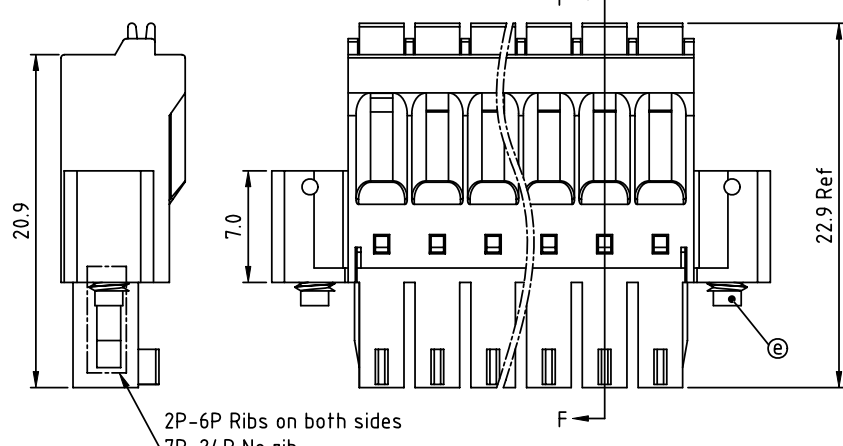
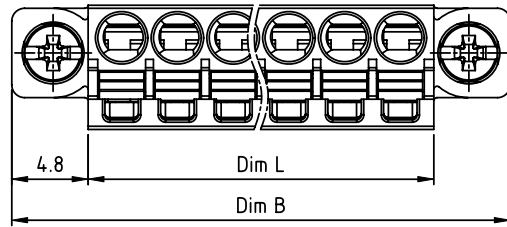
Dim L=(N-1)×3.5+4.2
Dim P=(N-1)×3.5
Dim A=(N-1)×3.5+8.6
Dim B=(N-1)×3.5+13.8

N=Number of poles

POLES	Tolerance
2p-6p	±0.15
7p-12p	±0.25
13p-18p	±0.30
19p-24p	±0.40

PART NO.: KD xx 1 0 x 1 00J0 G

Solid block	0	Housing Color	Black (RAL9005)	RoHS compliant	(lead<4%)
No. of poles	5		Green(RAL6018/T)	In copper Alloy	
02	2 poles	6	Blue (RAL5015/A)		
03	3 poles	8	Grey(RAL7035/D)		
...	...				
24	24 poles				



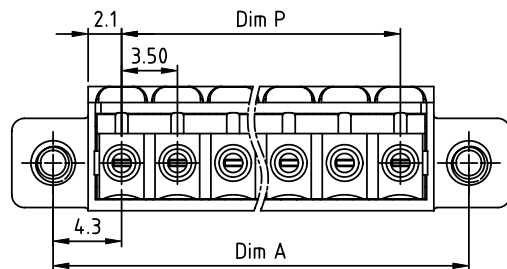
SECTION F-F

Material:

- ItemⒶ Terminal lever: Thermoplastic (UL94V-0) Orange (RAL2011/P)
- ItemⒹ Top housing: Thermoplastic (UL94V-0)
- ItemⒸ Female contact: PhBz, Bright Tin plated over Nickel plated
- ItemⒺ Spring clamp: Stainless steel
- ItemⒺ Flange screw: M2.5 Steel, Zinc plated
- ItemⒻ Bottom housing: Thermoplastic (UL94V-0)

Electrical:

- Voltage rating: cULus 160 V
- Current rating: 5.5 A
- Wire range:
- Solid wire(AWG): 16-24
- Stranded wire(AWG): 16-24
- Wire strip length: 9-10 mm
- Withstanding Voltage: 1.32 KV
- Operating temperature: -40°C to +115°C
- Safety Approval: cULus



mat'l. code	surface ASME Y14.5	tolerance ASME Y14.5	projection	product family
ltr	ecn no	dr	date	TERMINAL BLOCK
B	T-24173	HF	052816	title
				TERMINAL BLOCK
				SPRING CLAMP, PLUGGABLE PLUG, WITH FLANGE
				scale
				dwg no
				sheet 1 of 1
				size
				KDxx10x100J0G
				A4
				type
				CUSTOMER Drawing
sheet index	revision	B		
	sheet	1		