

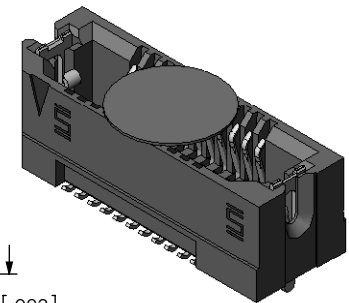
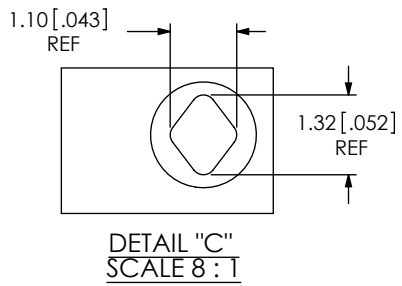
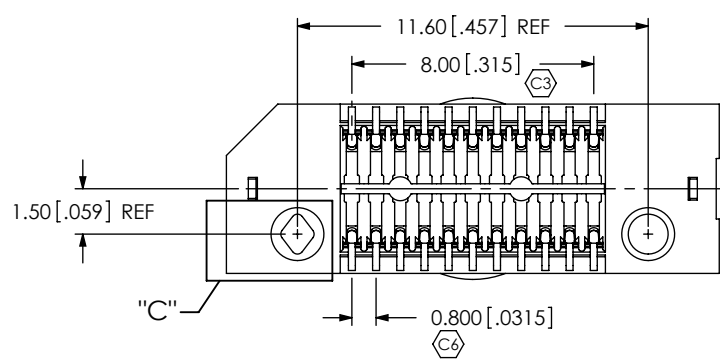
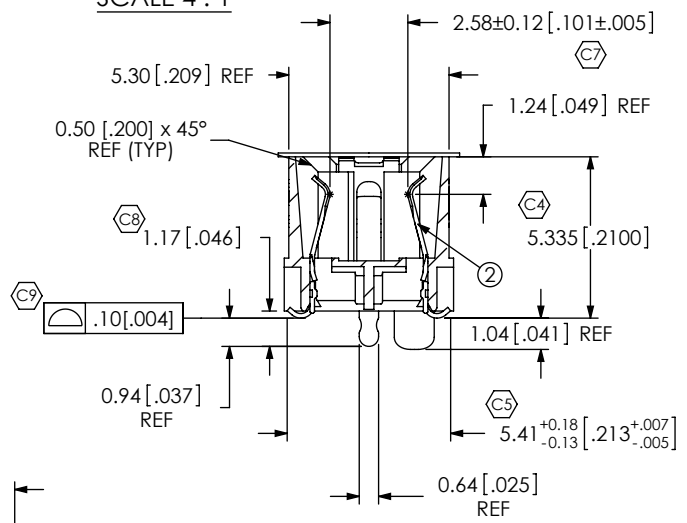
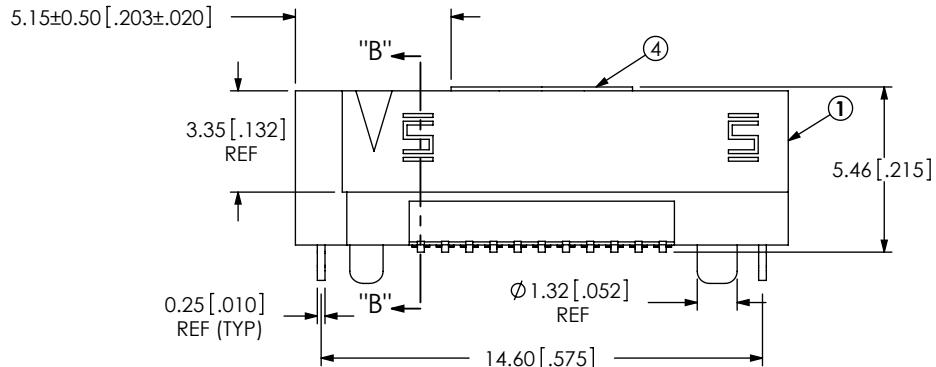
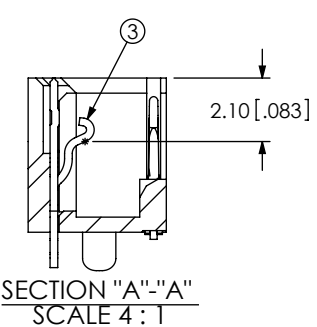
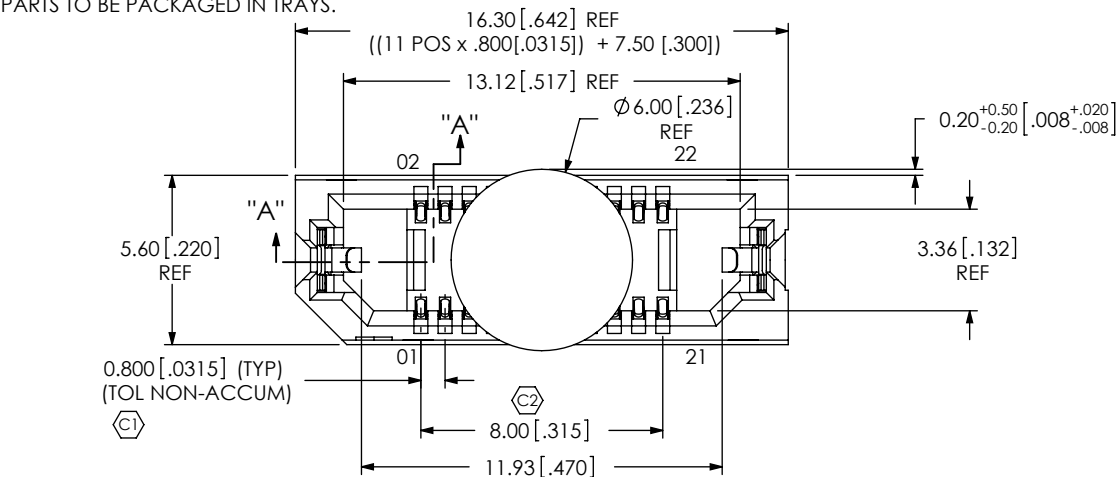
NOTES:


1. STANDARD PART SET UP AS ASP.
2. Ⓢ REPRESENTS A CRITICAL DIMENSION.
3. MAXIMUM BURR ALLOWANCE: .038 [.0015].
4. MINIMUM PUSHOUT FORCE: 2.22N [.5LB].
5. PARTS TO BE PACKAGED IN TRAYS.

REVISION

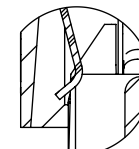
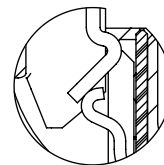
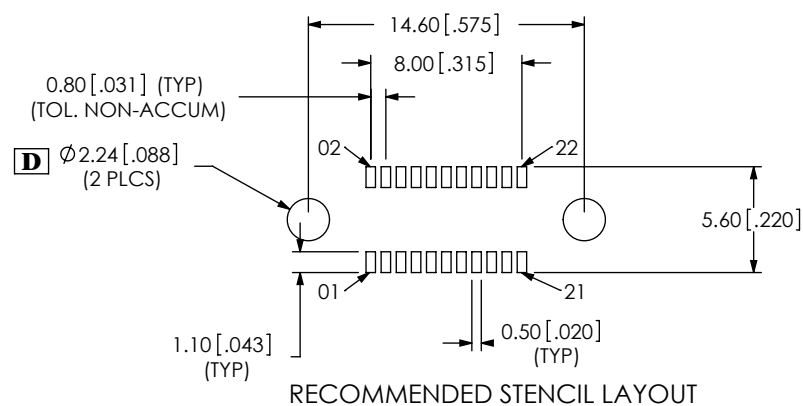
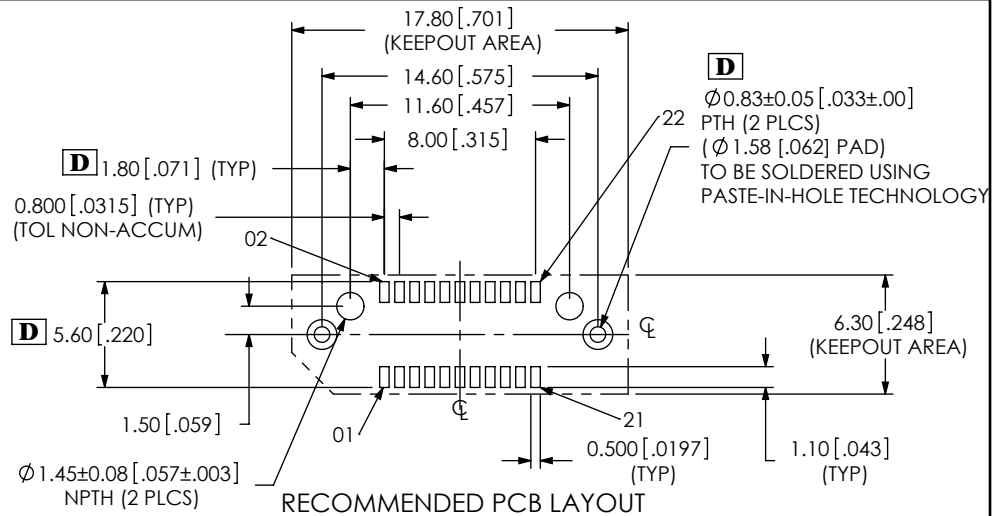
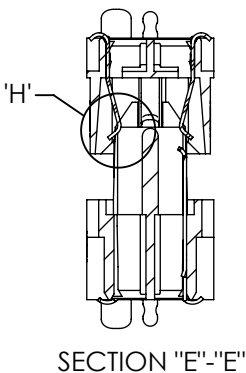
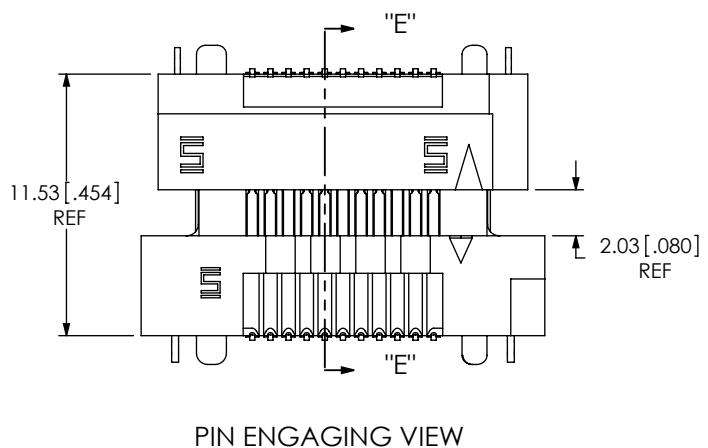
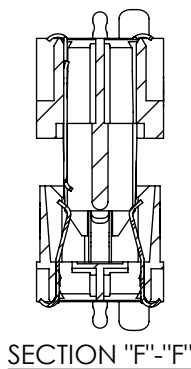
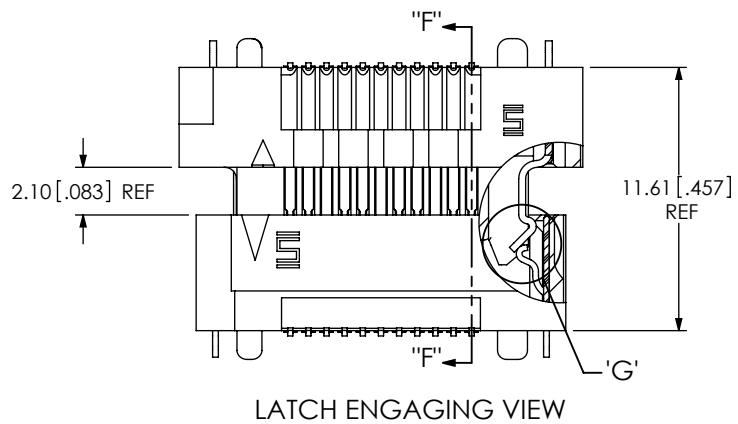
0	DF	D FRALEY
2/9/2008	ECN-85889	
ISSUE FOR REVIEW		
A	SM	D Fletcher
5/1/2008	ECN-90087	
RELEASE FOR PRODUCTION		
B	MM	D Fletcher
6/11/2008	ECN-92573	
BOM CHG ERF8-011-05.0-DV-L TO ERF8-011-05.0-DV-SL		
C	JB	D FRALEY
11/10/2008	ECN-100474	
BOM CHG ERF8-011-05.0-DV-SL TO ERF8-011-05.0-DV-L		
D	JB	Z Paden
3/2/2010	ECN-128251	
SMT2, RECOMMENDED PCB LAYOUT: DEL 4.90 (TYP), ADD 1.80 (TYP), CHG ⌀0.83±0.02 TO ⌀0.83±0.05, CHG 5.61 TO 5.60, ADD NOTE "TO BE SOLDERED USING PASTE-IN-HOLE TECHNOLOGY", RECOMMENDED STENCIL LAYOUT: CHG ⌀1.59 (2 PLS) TO ⌀2.247 (2 PLS)		

ACCEPTANCE OF DRAWING	_____
ACCEPTED WITH DEVIATIONS LISTED	_____
DATE:	_____
COMPANY:	_____
CUSTOMER SIGNATURE	_____
PRINTED NAME	_____
PHONE No:	_____
FAX No:	_____



UNLESS OTHERWISE SPECIFIED, DIMENSIONS ARE IN MILLIMETERS. TOLERANCES ARE: DECIMALS ANGLES .X: ±.3[.01] 2° .XX: ±.13[.005] .XXX: ±.051[.0020]	PROPRIETARY NOTE THIS DOCUMENT CONTAINS INFORMATION CONFIDENTIAL AND PROPRIETARY TO SAMTEC, INC. AND SHALL NOT BE REPRODUCED OR TRANSFERRED TO OTHER DOCUMENTS OR DISCLOSED TO OTHERS OR USED FOR ANY PURPOSE OTHER THAN THAT WHICH IT WAS OBTAINED WITHOUT THE EXPRESSED WRITTEN CONSENT OF SAMTEC, INC.	 520 PARK EAST BLVD, NEW ALBANY, IN 47150 PHONE: 812-944-6733 FAX: 812-948-5047 e-Mail: info@SAMTEC.com code 53322
PLATING: CONTACT AREA: .000030 GOLD OVER .000050 NICKEL REMAINDER: .000200 REF TIN OVER .000050 NICKEL LATCHES: .000003 GOLD OVER .000050 NICKEL	DWG. NO. ASP-137969-01	BY: David F 01/24/2008 SHEET 1 OF 2

ITEM NO.	PART NUMBER	QUANTITY	MATERIAL
1	ERF8-011-05.0-DV-L	1.0000	VECTRA E130i, COLOR: BLACK
2	C-211-05.0-S	22.000	BeCu, 390 HT
3	WT-30-01-F	2.0000	BeCu, #25, 1/2 HT
4	K-500-300	1.0000	POLYIMIDE FILM (KAPTON)
5	TY-ERF8049-11-5-L	1.0000	BLACK HIPS



**PROPRIETARY NOTE**

THIS DOCUMENT CONTAINS INFORMATION CONFIDENTIAL AND PROPRIETARY TO SAMTEC, INC. AND SHALL NOT BE REPRODUCED OR TRANSFERRED TO OTHER DOCUMENTS OR DISCLOSED TO OTHERS OR USED FOR ANY PURPOSE OTHER THAN THAT WHICH IT WAS OBTAINED WITHOUT THE EXPRESSED WRITTEN CONSENT OF SAMTEC, INC.



520 PARK EAST BLVD, NEW ALBANY, IN 47150  
PHONE: 812-944-6733 FAX: 812-948-5047  
e-Mail: info@SAMTEC.com code 53322

SHEET SCALE: 3:1

DESCRIPTION: MODIFIED ERF8 ASSEMBLY

DWG. NO. ASP-137969-01

By: David F 01/24/2008 SHEET 2 OF 2