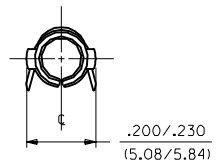
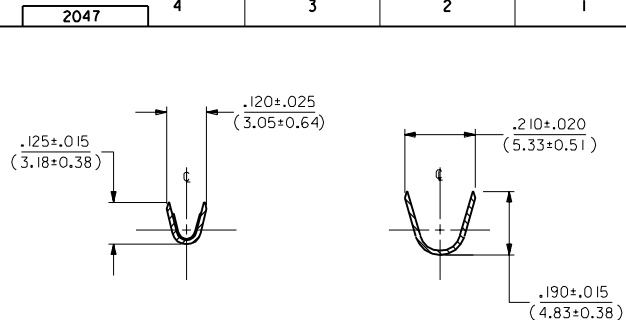


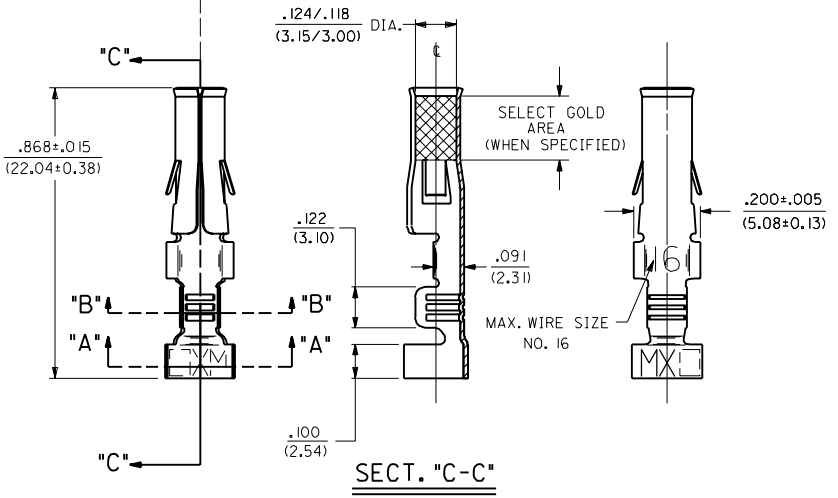
PART NO.	ENG. NO.
18-12-1222	2047-(K(P90)DL)
18-12-1221	2047-(K(P90)I)



SECT. "B-B"

SECT. "A-A"

LEGEND
 2047-I(****)*
 VERSION ↑↑↑↑↑
 .120/(3.05) MAX. DIA. INSULATION
 P=PREPLATE ↑
 BLANK=POSTPLATE ↑
 FINISH CODE ↑
 FORM BLANK=CHAIN
 L=LOOSE



SECT. "C-C"

- NOTES:
1. TERMINAL FOR USE WITH .125/(3.17) SERIES HOUSINGS AND WILL ACCEPT 16 THRU 18 AWG WIRE HAVING A .120/(3.05) MAX. DIAMETER INSULATION.
 2. INSERTION FORCE: 6.0 LBS. MAX. WHEN TERMINAL IS INSERTED INTO .125/(3.17) DIA. CORE HOLE.
 3. PULL OUT FORCE: 30 LBS. MIN. RETENTION IN HOUSING .

FINISH CODES:
 901 HOT TIN DIP .000020/(0.0005) MIN.

MATERIAL NOTES:
 1. CARTRIDGE BRASS, ALLOY #C26000;
 .013/(0.33) THICK, SPRING TEMPER

EI	OBS. - (K555) & ECR US 0379	- (K555)L RW
E	ADD SELECT AREA ECR #UO 0230 3-5-90	RW
D	REVISE PER ECR US 1189 11-28-89 TRM	RW
C	REV. & REDRAWN ECR US 1941 KBW 10-4-88 RW	RW

MFG.	SH.	REV.	L.T.R.	REVISIONS

DIMENSIONS SHOWN (METRIC) INCH		UNLESS OTHERWISE SPECIFIED TOLERANCES: ANGULAR ± .001°		TITLE	
INCH		METRIC		CRIMP TERMINAL, FEMALE, .125/(3.17) DIA 16-18 AWG .120/(3.05) DIA. INSUL.	
3 PLACE	± .010	---	± 0.25	SHEET NO. DATE	
2 PLACE	± .014	---	± 0.35	1 OF 1 10 / 4 / 88	
1 PLACE	---	---	---	MOLEX INCORPORATED	
DRAFT WHERE APPLICABLE MUST REMAIN WITHIN DIMENSIONS		PART NO.		DRWG. NO.	
DRWG. BY: KBW		CHKD. BY: RW		SEE CHART SD-2047-1	
APP'D. BY: RAS		SCALE: 4 : 1		FILE NAME: S2047.IX1	
				THIS DRAWING CONTAINS INFORMATION THAT IS PROPRIETARY TO MOLEX INC. AND SHOULD NOT BE USED WITHOUT WRITTEN PERMISSION.	

2047