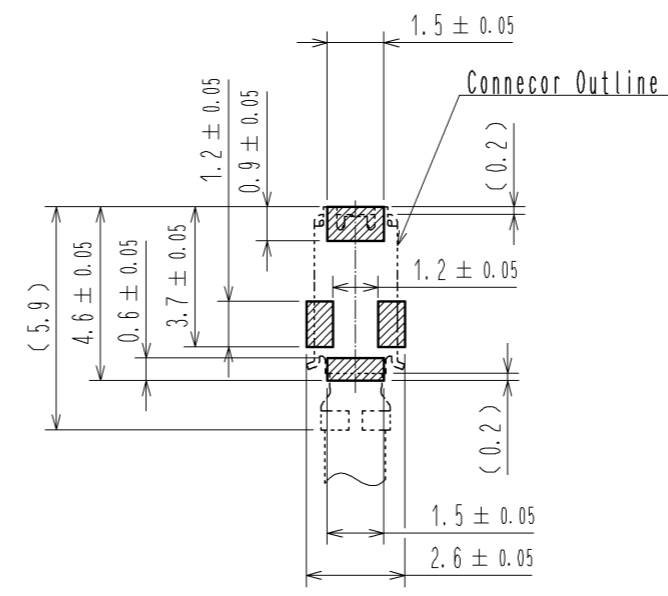
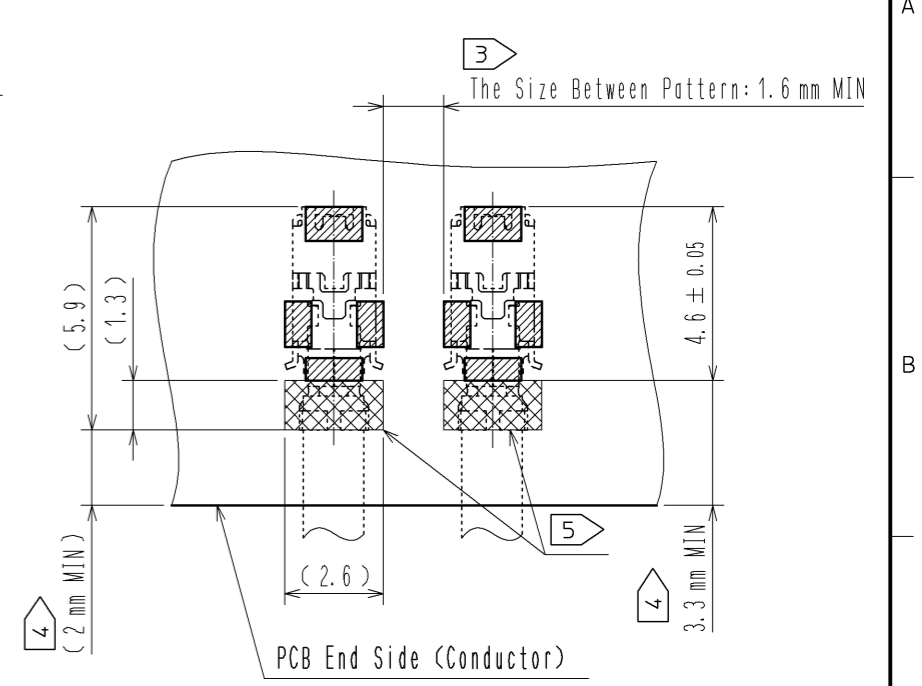


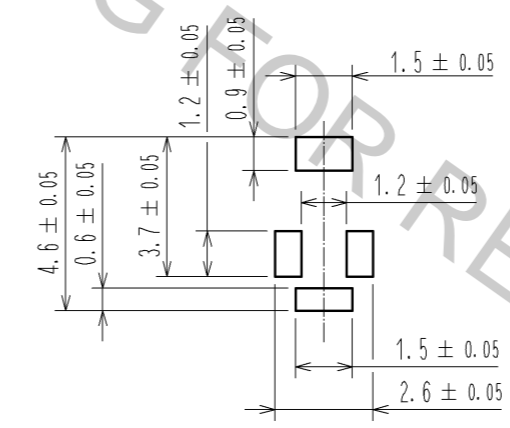
**Recommended PCB Layout (5 : 1)**



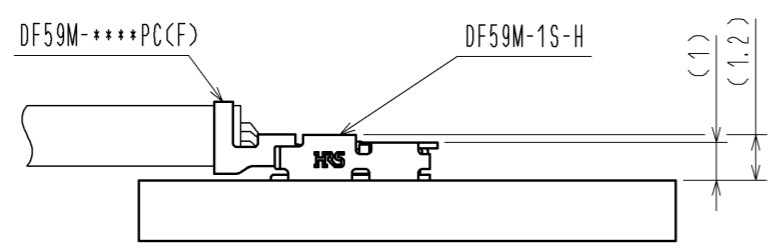
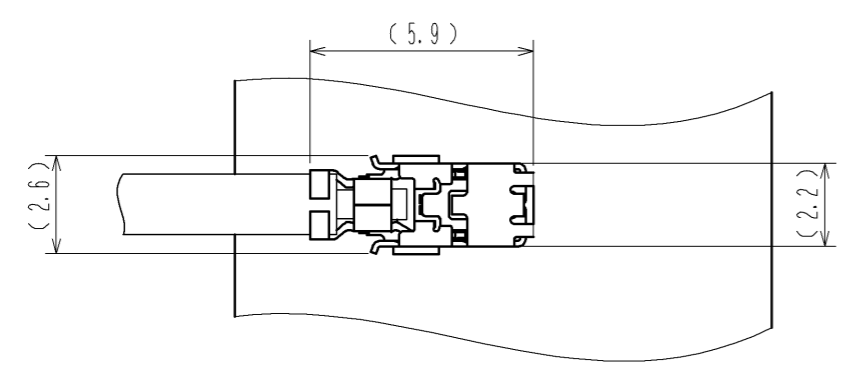
**Parallel Arrangement Recommended PCB Layout(5 : 1)**



**Recommended Metal Mask (5 : 1)  
Thickness : 0.1mm**



**Mating Figure(5:1)**

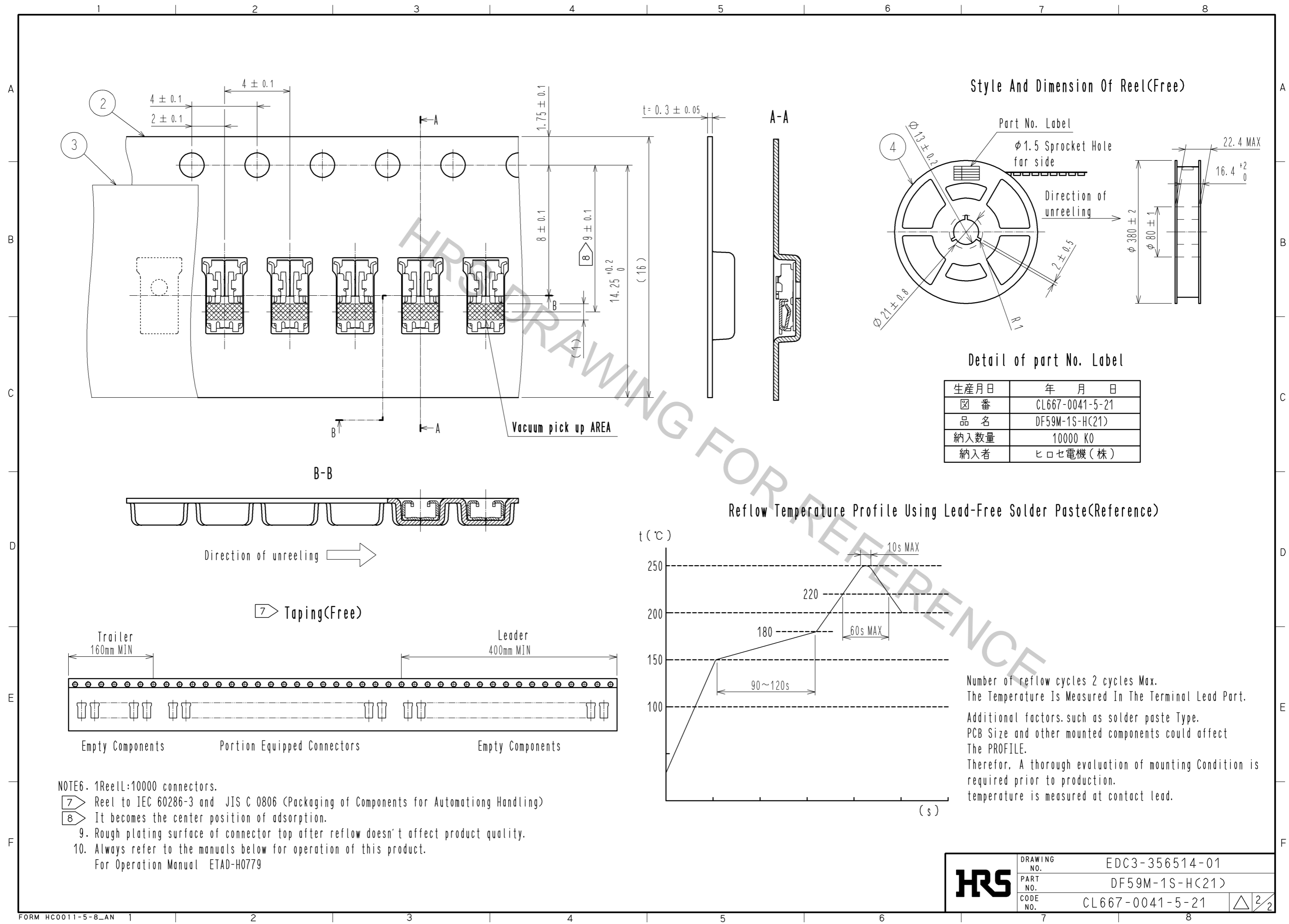


**Warning**

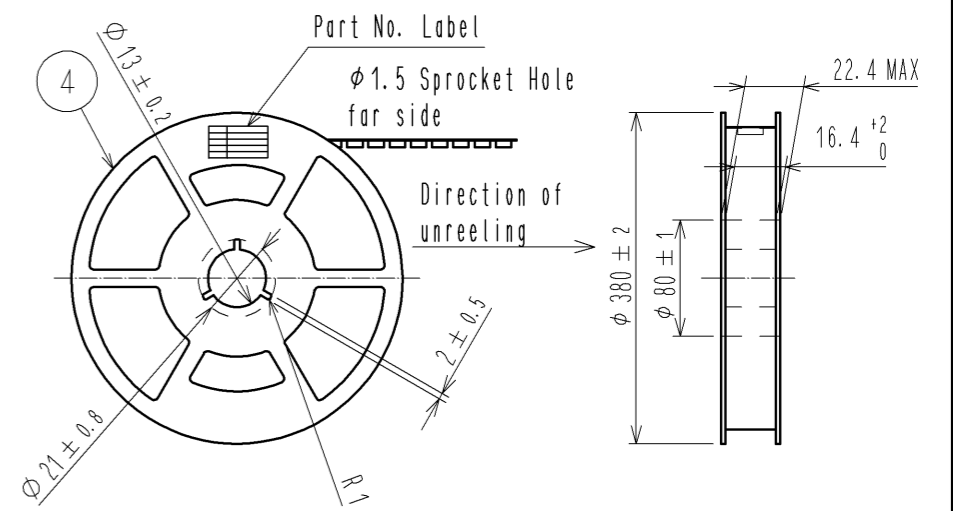
This product does not have an insulator.  
Please do not operate the connector during current-carrying.

- NOTE 1. lead co-planarity shall be 0.1mm MAX.  
2. The Dimensions In Parentheses Are For Reference.
- 3 In accordance with IEC60664 and JIS C 60664, creepage distance of 1.6mm or more is required in 300V of rated voltage. (In pollution degree2 of printed wiring material)
  - 4 Please take +0.4mm longer than the standard of recommended creepage distance for the direction, because the direction is needed consideration of the mating clearance and manufacturing tolerance of crimping.
  - 5 Keep the indicated area away from Conductive trace.  
When patterning is not avoidable, Conductive trace must be covered by resist film.

1	Cooper Alloy	SURFACE:TIN-PLATING 1μm MIN. UNDER PLATING:NICKEL 0.5μm MIN.	4	PS	REEL, BLACK		
			3	Polyester	CLEAR(COVER TAPE)		
			2	PS	CLEAR(EMBOSSED CARRIER TAPE)		
NO.	MATERIAL	FINISH . REMARKS	NO.	MATERIAL	FINISH . REMARKS		
UNITS mm		SCALE 10 : 1	COUNT △	DESCRIPTION OF REVISIONS	DESIGNED	CHECKED	DATE
<b>HRS</b> HIROSE ELECTRIC CO., LTD.		APPROVED : HK. UMEHARA	14. 05. 20	DRAWING NO. EDC3-356514-01			
		CHECED : HK. UMEHARA	14. 05. 20	PART NO. DF59M-1S-H(21)			
		DESIGNED : SZ. ONO	14. 05. 20	CODE NO. CL667-0041-5-21			
		DRAWN : SZ. ONO	14. 05. 20			△ 1/2	



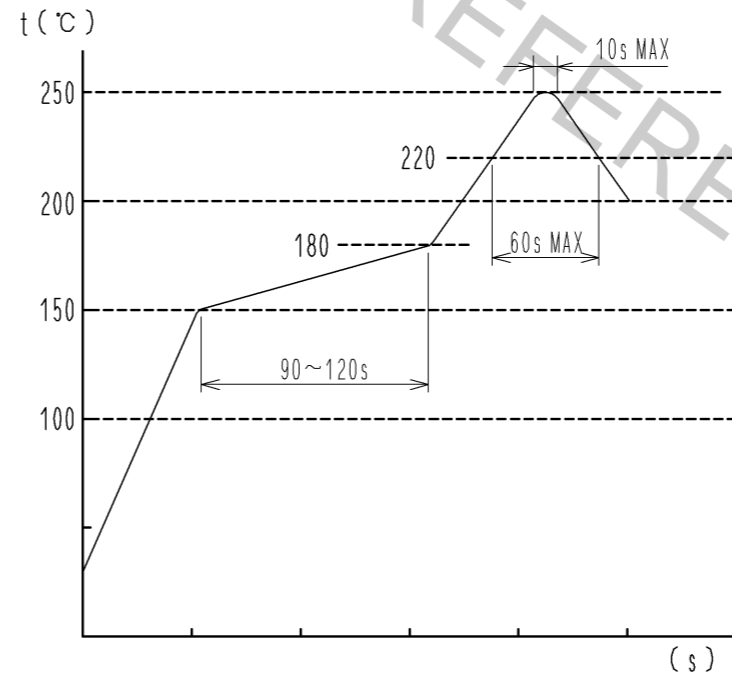
Style And Dimension Of Reel(Free)



Detail of part No. Label

生産月日	年 月 日
図 番	CL667-0041-5-21
品 名	DF59M-1S-H(21)
納入数量	10000 KO
納入者	ヒロセ電機(株)

Reflow Temperature Profile Using Lead-Free Solder Paste(Reference)



Number of reflow cycles 2 cycles Max.  
 The Temperature Is Measured In The Terminal Lead Part.  
 Additional factors, such as solder paste Type,  
 PCB Size and other mounted components could affect  
 The PROFILE.  
 Therefore, A thorough evaluation of mounting Condition is  
 required prior to production.  
 temperature is measured at contact lead.

- NOTE6. 1Reel:10000 connectors.  
 7 Reel to IEC 60286-3 and JIS C 0806 (Packaging of Components for Automating Handling)  
 8 It becomes the center position of adsorption.  
 9. Rough plating surface of connector top after reflow doesn't affect product quality.  
 10. Always refer to the manuals below for operation of this product.  
 For Operation Manual ETAD-H0779

<b>HRS</b>	DRAWING NO.	EDC3-356514-01
	PART NO.	DF59M-1S-H(21)
	CODE NO.	CL667-0041-5-21
		△ 2/2