

THIS DRAWING IS UNPUBLISHED. RELEASED FOR PUBLICATION
 © COPYRIGHT - By - ALL RIGHTS RESERVED.

| LOC | | DIST | | REVISIONS | | | |
|-----|-----|-------------|---------------------------|-----------|------|----|--|
| P | LTR | DESCRIPTION | DATE | DWN | APVD | | |
| AF | 50 | D5 | REVISED PER ECR-13-019678 | 19DEC2013 | GRZ | JL | |

D

C

B

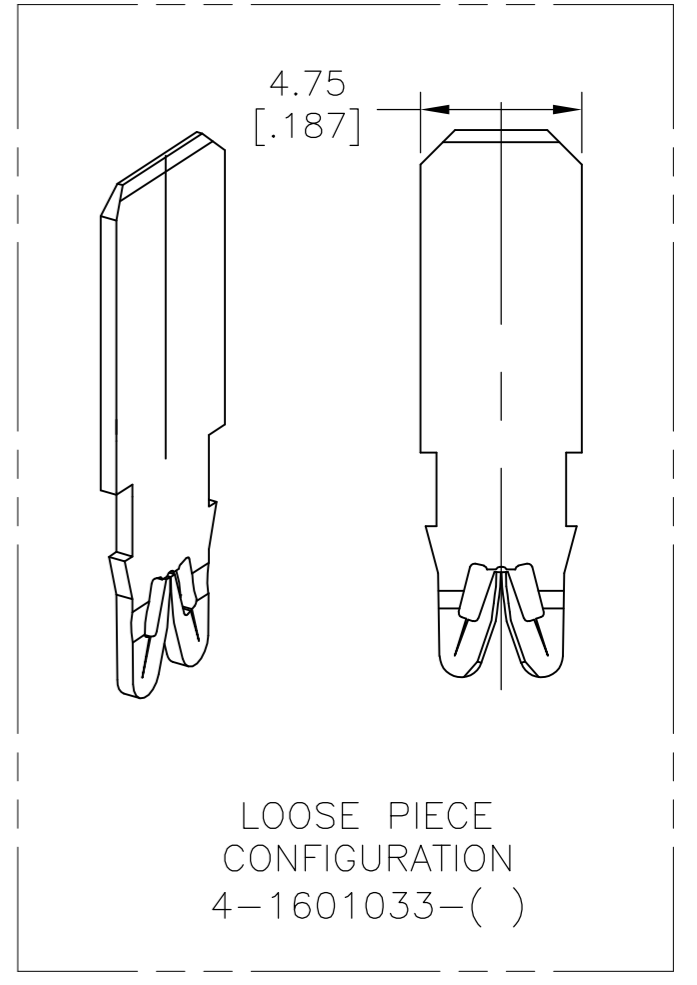
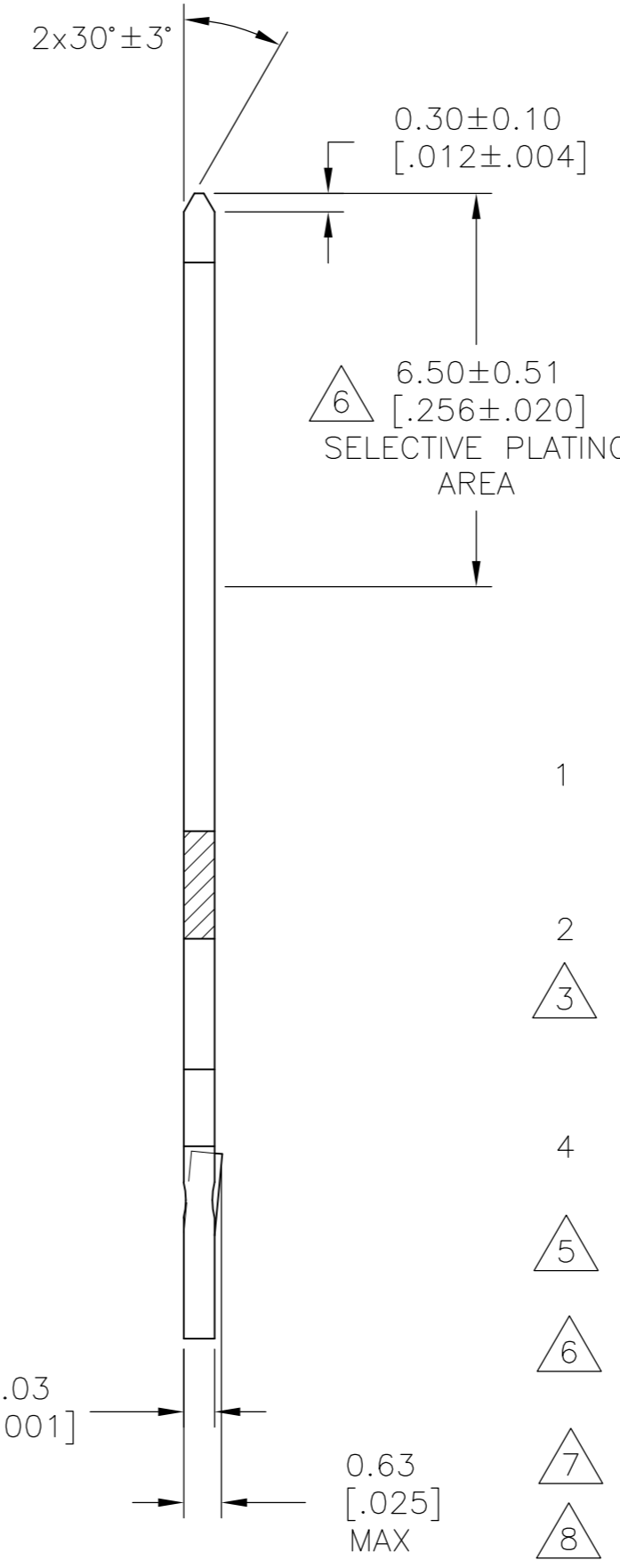
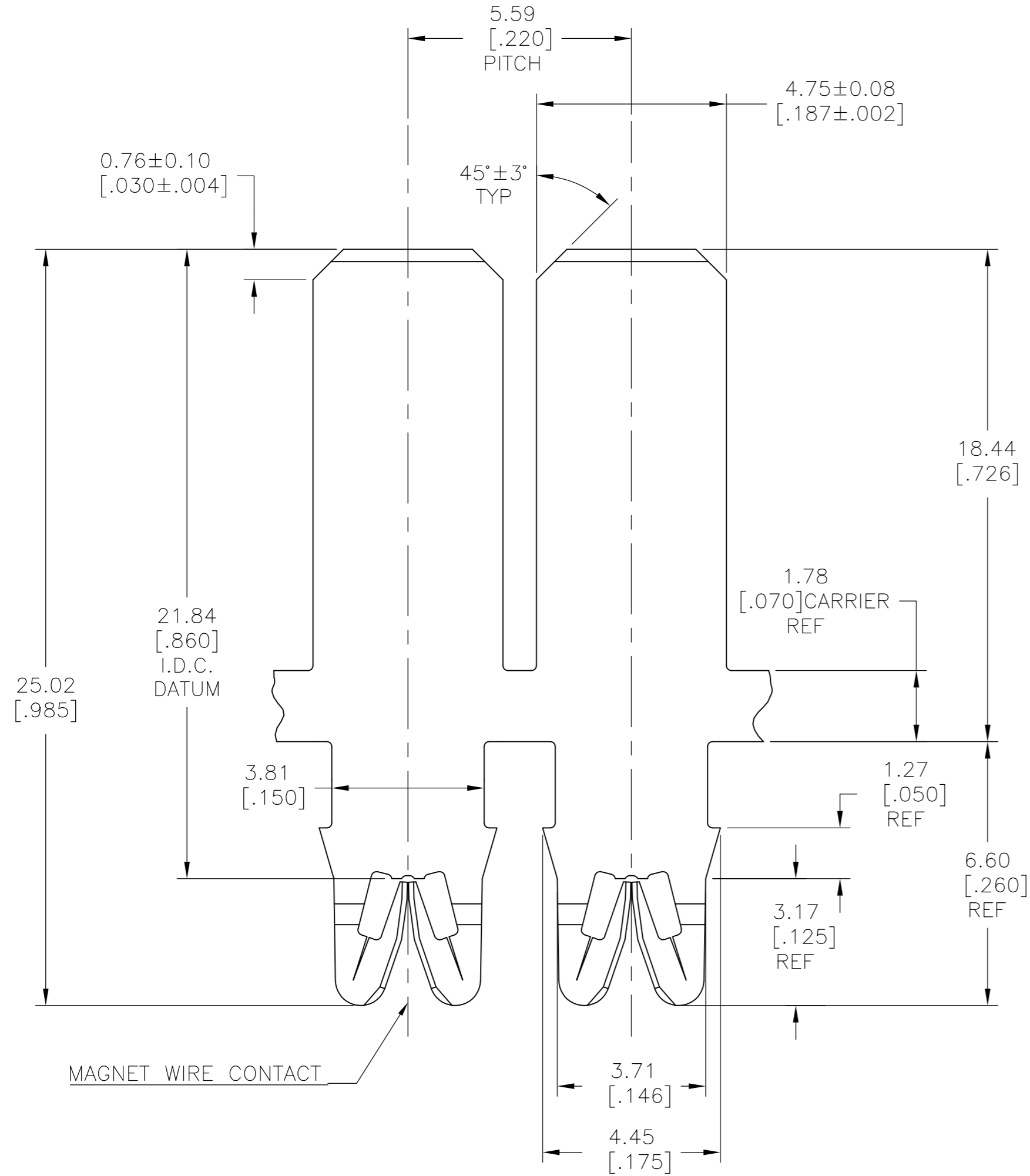
A

D

C

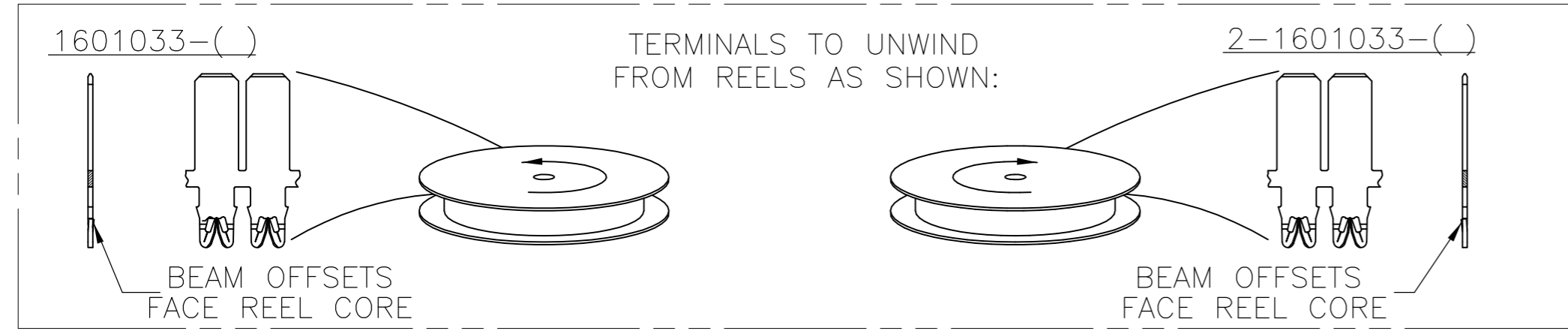
B

A



- 1 SPECIFICATIONS:
MAGNET WIRE #18- #34 AWG COPPER.
1.02[.040] - 0.16[.006] DIA.
- 2 POCKET RECOMMENDATION: # 1601427.
- 3 TERMINAL APPLICATION TO COMPLY WITH TYCO ELECTRONICS SPECIFICATION 114-13166 FIGURE 6.
- 4 TWO (2) TERMINALS SHOWN FOR ILLUSTRATION PURPOSES ONLY.
- 5 NON-STANDARD PACKAGING. ALL PLASTIC REEL AND PLASTIC INTERLEAVING PLACED IN A PLASTIC BAG.
- 6 SELECTIVE PLATE AREA 1.9 MICRONS [.000075] MIN SILVER. ENTIRE TERMINAL IS UNDERPLATED WITH NICKEL.
- 7 PRELIMINARY-NOT FOR PRODUCTION
- 8 PRE-PRODUCTION - FASR REQUIRED

| STANDARD | FINISH | TE PART NUMBER |
|------------|---|----------------|
| | 6 | 8 1601033-5 |
| 5 | PRE-PLATED TIN OVER COPPER UNDERPLATE | 7 1601033-4 |
| SUPERSEDED | STANDARD POST-PLATED TIN OVER COPPER UNDERPLATE | 4 1601033-2 |
| STANDARD | PRE-PLATED TIN OVER COPPER UNDERPLATE | 2 1601033-3 |
| STANDARD | PRE-PLATED TIN OVER COPPER UNDERPLATE | 1601033-3 |
| PACKAGING | | |



THIS DRAWING IS A CONTROLLED DOCUMENT.

| | | | |
|------------------------------|---|---|---|
| DIMENSIONS: mm [INCHES] | TOLERANCES UNLESS OTHERWISE SPECIFIED: 0 PLC ± - 1 PLC ± - 2 PLC ± 0.13[.005] 3 PLC ± - 4 PLC ± - ANGLES ± 2° | DWN J.WELLER 11JAN2002 CHK M.FEHER 11JAN2002 APVD K.RANDOLPH 11JAN2002 PRODUCT SPEC 108-2085 APPLICATION SPEC 3 | NAME STANDARD RANGE WIRE TO 4.75 X 0.51 BARB TAB SIAMEZE TERMINAL |
| MATERIAL BRASS, FULL HARD | FINISH SEE TABLE | WEIGHT - | SIZE A2 CAGE CODE 00779 DRAWING NO C=1601033 RESTRICTED TO - |
| CUSTOMER DRAWING | | SCALE 9:1 | SHEET 1 OF 1 REV D5 |

TE Connectivity

1601033