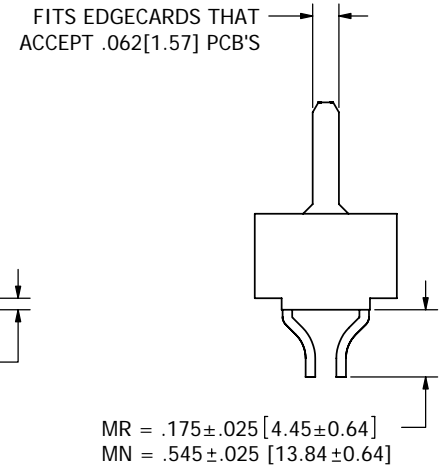
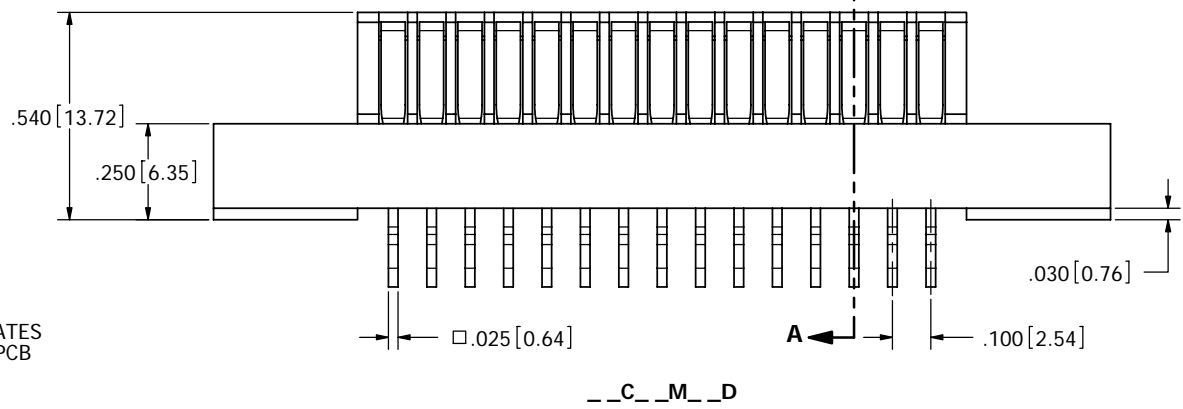
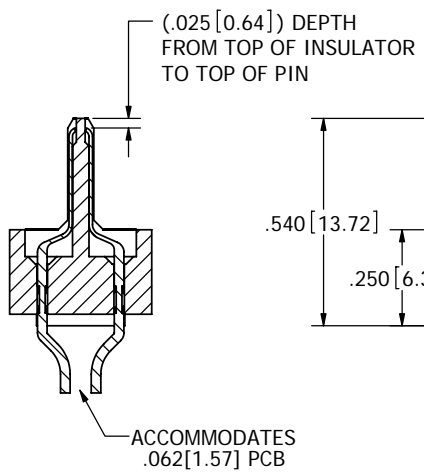
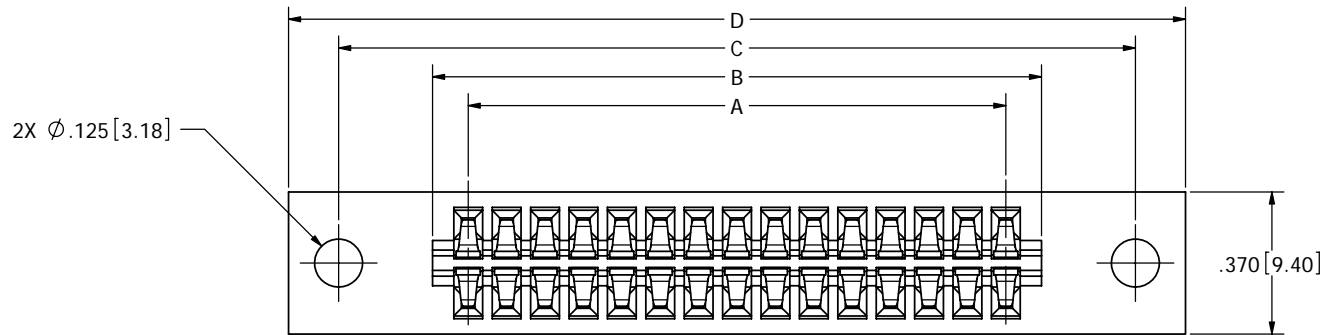


| REVISIONS |         |                                      |           |     |
|-----------|---------|--------------------------------------|-----------|-----|
| REV.      | ECO. NO | DESCRIPTION                          | DATE      | BY  |
| A         | 1600    | INITIAL RELEASE                      | 2/5/2008  | VJ  |
| B         | 1619    | DEFINE AVAIL N-MOUNT POS, ADD CC DIM | 2/28/2008 | ASK |

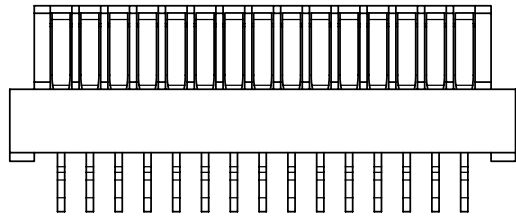
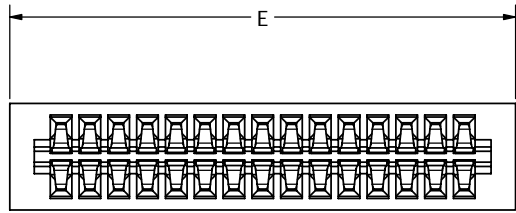


- NOTES:
- INSULATOR MATERIAL: SEE PART NUMBER CODING.
  - CONTACT MATERIAL: SEE PART NUMBER CODING.
  - PLATING: SEE PART NUMBER CODING.
  - TEMPERATURE: SEE PART NUMBER CODING.
  - PROCESSING TEMP: SEE PART NUMBER CODING.
  - UL FLAMMABILITY RATING: 94V-0.
  - VOLTAGE RATING: 600 VDC MINIMUM AT SEA LEVEL.
  - CURRENT RATING: 3 AMP PER CONTACT PAIR.
  - VOLTAGE DROP: 30 MILLI VOLT AT RATED CURRENT.
  - INSULATION RESISTANCE: 5000 MEGA OHMS.
  - CONNECTOR IDENTIFICATION: THE PART SHALL BE MARKED WITH A PART NUMBER AND BARCODE.

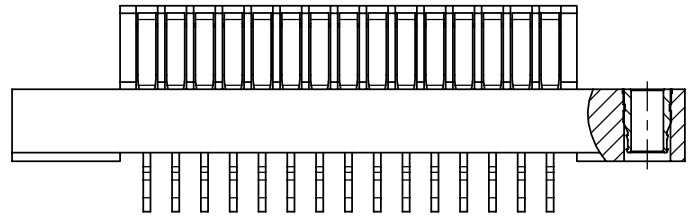
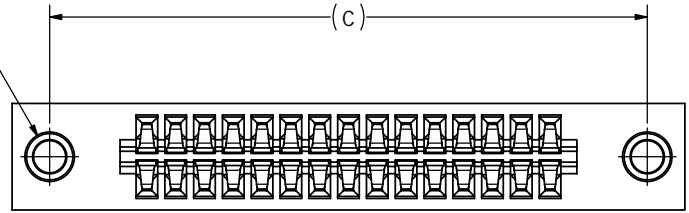


# CUSTOMER COPY

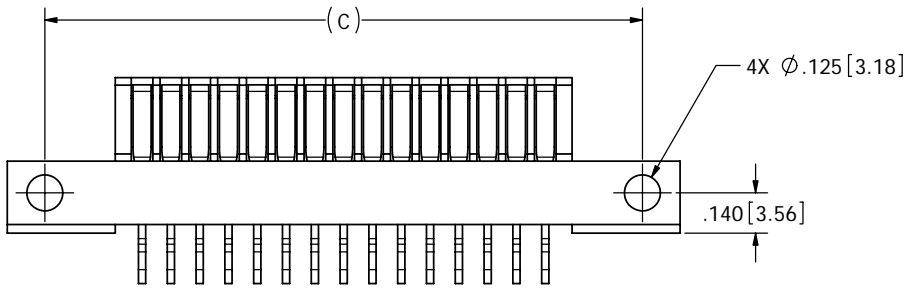
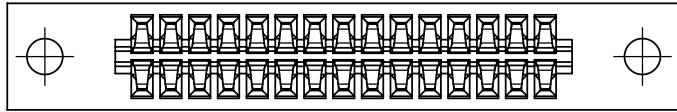
|   |         |          |              |  |
|---|---------|----------|--------------|--|
| UNLESS OTHERWISE SPECIFIED:<br>DIMENSIONS ARE IN INCHES[MM]   |         | DATE     | NAME         | <b>SULLINS ELECTRONICS</b><br>DESCRIPTION<br><b>MALE, CARD EXTENDER, .100 CC</b><br>PART NUMBER<br><b>--C_M-- (MR, MN)</b> |
| TOLERANCES:<br>ANGULAR: ± 1°<br>.XX = ± .02 [ .508]<br>.XXX = ± .005 [ .1270]<br>.XXXX = ± .0005 [ .0127]<br>PARENTHEetical INFORMATION IS FOR REFERENCE ONLY |         | 2/5/2008 | V. JARA      |  |
| SIZE  | DWG. NO | REV      | SCALE: 4:1   |  |
| C   | C11050  | B        | SHEET 1 OF 3 |  |



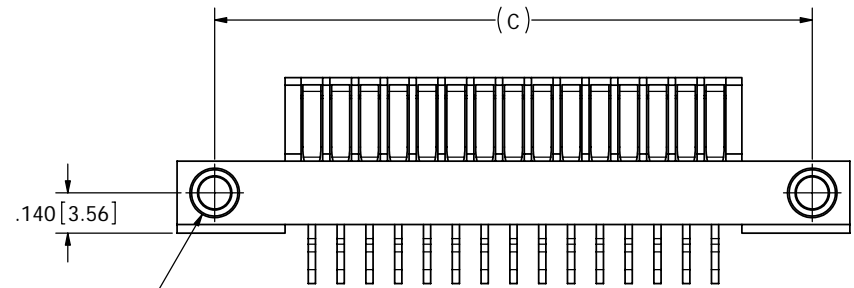
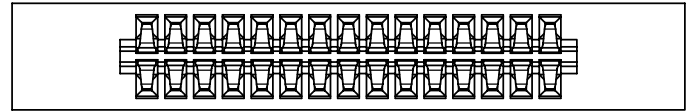
\_\_C\_\_M\_\_N



\_\_C\_\_M\_\_T



\_\_C\_\_M\_\_Z



\_\_C\_\_M\_\_V

2X #4-40  
THREADED  
INSERTS

2X #4-40  
THREADED  
INSERTS

# CUSTOMER COPY



RoHS COMPLIANT

UNLESS OTHERWISE SPECIFIED:  
DIMENSIONS ARE IN INCHES[MM]  
TOLERANCES:  
ANGULAR: ± 1°  
XX = ± .02 [ .508]  
.XXX = ± .005 [ .1270]  
.XXXX = ± .0005 [ .0127]  
PARENTHETICAL INFORMATION IS FOR  
REFERENCE ONLY  
INTERPRET DIMENSIONS AND GEOMETRIC  
TOLERANCING  
PER: ANSI Y14.5-1984

|   |          |         |
|---|----------|---------|
| DRAWN   | DATE     | NAME    |
|   | 2/5/2008 | V. JARA |
| <small>THE INFORMATION HEREIN CONTAINS<br/>PROPRIETARY INFORMATION OF<br/>SULLINS ELECTRONICS AND IS NOT<br/>TO BE REPRODUCED, USED OR<br/>DISCLOSED TO OTHERS FOR ANY<br/>PURPOSE EXCEPT AS SPECIFICALLY<br/>AUTHORIZED IN WRITING BY AN<br/>OFFICER OF SULLINS ELECTRONICS.</small> |          |         |
| SIZE  | DWG. NO. | REV     |
| C   | C11050   | B       |

|   |              |
|---|--------------|
| <b>SULLINS<br/>ELECTRONICS</b>                                    |              |
| <small>DESCRIPTION</small><br><b>MALE, CARD EXTENDER, .100 CC</b> |              |
| <small>PART NUMBER</small><br><b>__C__M__ (MR, MN)</b>            |              |
| SCALE: 3:1  | SHEET 2 OF 3 |

| PART NUMBER | NO. OF POS. | A±.008[0.20] |       | B±.008[0.20] |       | C±.010[0.25] |        | D±.020[0.51] |        | *E±.020[0.51] |       |
|-------------|-------------|--------------|-------|--------------|-------|--------------|--------|--------------|--------|---------------|-------|
|             |             | IN           | MM    | IN           | MM    | IN           | MM     | IN           | MM     | IN            | MM    |
| C04M        | 4           | 0.300        | 7.62  | 0.486        | 12.34 | 0.975        | 24.77  | 1.236        | 31.39  | 0.656         | 16.66 |
| C05M        | 5           | 0.400        | 10.16 | 0.586        | 14.88 | 1.075        | 27.31  | 1.336        | 33.93  | 0.756         | 19.20 |
| C06M        | 6           | 0.500        | 12.70 | 0.686        | 17.42 | 1.175        | 29.85  | 1.436        | 36.47  | 0.856         | 21.74 |
| C07M        | 7           | 0.600        | 15.24 | 0.786        | 19.96 | 1.275        | 32.39  | 1.536        | 39.01  | 0.956         | 24.28 |
| C08M        | 8           | 0.700        | 17.78 | 0.886        | 22.50 | 1.375        | 34.93  | 1.636        | 41.55  | 1.056         | 26.82 |
| C09M        | 9           | 0.800        | 20.32 | 0.986        | 25.04 | 1.475        | 37.47  | 1.736        | 44.09  | 1.156         | 29.36 |
| C10M        | 10          | 0.900        | 22.86 | 1.086        | 27.58 | 1.575        | 40.01  | 1.836        | 46.63  | 1.256         | 31.90 |
| C11M        | 11          | 1.000        | 25.40 | 1.186        | 30.12 | 1.675        | 42.55  | 1.936        | 49.17  | 1.356         | 34.44 |
| C12M        | 12          | 1.100        | 27.94 | 1.286        | 32.66 | 1.775        | 45.09  | 2.036        | 51.71  | 1.456         | 36.98 |
| C13M        | 13          | 1.200        | 30.48 | 1.386        | 35.20 | 1.875        | 47.63  | 2.136        | 54.25  | 1.556         | 39.52 |
| C14M        | 14          | 1.300        | 33.02 | 1.486        | 37.74 | 1.975        | 50.17  | 2.236        | 56.79  | 1.656         | 42.06 |
| C15M        | 15          | 1.400        | 35.56 | 1.586        | 40.28 | 2.075        | 52.71  | 2.336        | 59.33  | 1.756         | 44.60 |
| C16M        | 16          | 1.500        | 38.10 | 1.686        | 42.82 | 2.175        | 55.25  | 2.436        | 61.87  | 1.856         | 47.14 |
| C17M        | 17          | 1.600        | 40.64 | 1.786        | 45.36 | 2.275        | 57.79  | 2.536        | 64.41  | 1.956         | 49.68 |
| C18M        | 18          | 1.700        | 43.18 | 1.886        | 47.90 | 2.375        | 60.33  | 2.636        | 66.95  | 2.056         | 52.22 |
| C19M        | 19          | 1.800        | 45.72 | 1.986        | 50.44 | 2.475        | 62.87  | 2.736        | 69.49  | 2.156         | 54.76 |
| C20M        | 20          | 1.900        | 48.26 | 2.086        | 52.98 | 2.575        | 65.41  | 2.836        | 72.03  | 2.256         | 57.30 |
| C21M        | 21          | 2.000        | 50.80 | 2.186        | 55.52 | 2.675        | 67.95  | 2.936        | 74.57  | 2.356         | 59.84 |
| C22M        | 22          | 2.100        | 53.34 | 2.286        | 58.06 | 2.775        | 70.49  | 3.036        | 77.11  | 2.456         | 62.38 |
| C23M        | 23          | 2.200        | 55.88 | 2.386        | 60.60 | 2.875        | 73.03  | 3.136        | 79.65  | 2.556         | 64.92 |
| C24M        | 24          | 2.300        | 58.42 | 2.486        | 63.14 | 2.975        | 75.57  | 3.236        | 82.19  | 2.656         | 67.46 |
| C25M        | 25          | 2.400        | 60.96 | 2.586        | 65.68 | 3.075        | 78.11  | 3.336        | 84.73  | 2.756         | 70.00 |
| C26M        | 26          | 2.500        | 63.50 | 2.686        | 68.22 | 3.175        | 80.65  | 3.436        | 87.27  | 2.856         | 72.54 |
| C27M        | 27          | 2.600        | 66.04 | 2.786        | 70.76 | 3.275        | 83.19  | 3.536        | 89.81  | 2.956         | 75.08 |
| C28M        | 28          | 2.700        | 68.58 | 2.886        | 73.30 | 3.375        | 85.73  | 3.636        | 92.35  | 3.056         | 77.62 |
| C29M        | 29          | 2.800        | 71.12 | 2.986        | 75.84 | 3.475        | 88.27  | 3.736        | 94.89  | 3.156         | 80.16 |
| C30M        | 30          | 2.900        | 73.66 | 3.086        | 78.38 | 3.575        | 90.81  | 3.836        | 97.43  | 3.256         | 82.70 |
| C31M        | 31          | 3.000        | 76.20 | 3.186        | 80.92 | 3.675        | 93.35  | 3.936        | 99.97  | 3.356         | 85.24 |
| C32M        | 32          | 3.100        | 78.74 | 3.286        | 83.46 | 3.775        | 95.89  | 4.036        | 102.51 | 3.456         | 87.78 |
| C33M        | 33          | 3.200        | 81.28 | 3.386        | 86.00 | 3.875        | 98.43  | 4.136        | 105.05 | 3.556         | 90.32 |
| C34M        | 34          | 3.300        | 83.82 | 3.486        | 88.54 | 3.975        | 100.97 | 4.236        | 107.59 | 3.656         | 92.86 |
| C35M        | 35          | 3.400        | 86.36 | 3.586        | 91.08 | 4.075        | 103.51 | 4.336        | 110.13 | 3.756         | 95.40 |

\*N' MTG ONLY

| PART NUMBER | NO. OF POS. | A±.008[0.20] |        | B±.008[0.20] |        | C±.010[0.25] |        | D±.020[0.51] |        | *E±.020[0.51] |        |
|-------------|-------------|--------------|--------|--------------|--------|--------------|--------|--------------|--------|---------------|--------|
|             |             | IN           | MM     | IN           | MM     | IN           | MM     | IN           | MM     | IN            | MM     |
| C36M        | 36          | 3.500        | 88.90  | 3.686        | 93.62  | 4.175        | 106.05 | 4.436        | 112.67 | 3.856         | 97.94  |
| C37M        | 37          | 3.600        | 91.44  | 3.786        | 96.16  | 4.275        | 108.59 | 4.536        | 115.21 | 3.956         | 100.48 |
| C38M        | 38          | 3.700        | 93.98  | 3.886        | 98.70  | 4.375        | 111.13 | 4.636        | 117.75 | 4.056         | 103.02 |
| C39M        | 39          | 3.800        | 96.52  | 3.986        | 101.24 | 4.475        | 113.67 | 4.736        | 120.29 | 4.156         | 105.56 |
| C40M        | 40          | 3.900        | 99.06  | 4.086        | 103.78 | 4.575        | 116.21 | 4.836        | 122.83 | 4.256         | 108.10 |
| C41M        | 41          | 4.000        | 101.60 | 4.186        | 106.32 | 4.675        | 118.75 | 4.936        | 125.37 | 4.356         | 110.64 |
| C42M        | 42          | 4.100        | 104.14 | 4.286        | 108.86 | 4.775        | 121.29 | 5.036        | 127.91 | 4.456         | 113.18 |
| C43M        | 43          | 4.200        | 106.68 | 4.386        | 111.40 | 4.875        | 123.83 | 5.136        | 130.45 | 4.556         | 115.72 |
| C44M        | 44          | 4.300        | 109.22 | 4.486        | 113.94 | 4.975        | 126.37 | 5.236        | 132.99 | 4.656         | 118.26 |
| C45M        | 45          | 4.400        | 111.76 | 4.586        | 116.48 | 5.075        | 128.91 | 5.336        | 135.53 | 4.756         | 120.80 |
| C46M        | 46          | 4.500        | 114.30 | 4.686        | 119.02 | 5.175        | 131.45 | 5.436        | 138.07 | 4.856         | 123.34 |
| C47M        | 47          | 4.600        | 116.84 | 4.786        | 121.56 | 5.275        | 133.99 | 5.536        | 140.61 | 4.956         | 125.88 |
| C48M        | 48          | 4.700        | 119.38 | 4.886        | 124.10 | 5.375        | 136.53 | 5.636        | 143.15 | 5.056         | 128.42 |
| C49M        | 49          | 4.800        | 121.92 | 4.986        | 126.64 | 5.475        | 139.07 | 5.736        | 145.69 | 5.156         | 130.96 |
| C50M        | 50          | 4.900        | 124.46 | 5.086        | 129.18 | 5.575        | 141.61 | 5.836        | 148.23 | 5.256         | 133.50 |
| C51M        | 51          | 5.000        | 127.00 | 5.186        | 131.72 | 5.675        | 144.15 | 5.936        | 150.77 | 5.356         | 136.04 |
| C52M        | 52          | 5.100        | 129.54 | 5.286        | 134.26 | 5.775        | 146.69 | 6.036        | 153.31 | 5.456         | 138.58 |
| C53M        | 53          | 5.200        | 132.08 | 5.386        | 136.80 | 5.875        | 149.23 | 6.136        | 155.85 | 5.556         | 141.12 |
| C54M        | 54          | 5.300        | 134.62 | 5.486        | 139.34 | 5.975        | 151.77 | 6.236        | 158.39 | 5.656         | 143.66 |
| C55M        | 55          | 5.400        | 137.16 | 5.586        | 141.88 | 6.075        | 154.31 | 6.336        | 160.93 | 5.756         | 146.20 |
| C56M        | * 56        | 5.500        | 139.70 | 5.686        | 144.42 |              |        |              |        | 5.856         | 148.74 |
| C57M        | * 57        | 5.600        | 142.24 | 5.786        | 146.96 |              |        |              |        | 5.956         | 151.28 |
| C58M        | * 58        | 5.700        | 144.78 | 5.886        | 149.50 |              |        |              |        | 6.056         | 153.82 |
| C59M        | * 59        | 5.800        | 147.32 | 5.986        | 152.04 |              |        |              |        | 6.156         | 156.36 |
| C60M        | * 60        | 5.900        | 149.86 | 6.086        | 154.58 |              |        |              |        | 6.256         | 158.90 |

\*N' MTG ONLY

**PART NUMBER CODING**

--- C --- M ---

**MATERIAL (INSULATOR/CONTACT)**

**E = PBT/PHOSPHOR BRONZE**  
 OPERATING TEMP: -65°C TO +125°C  
 PROCESSING TEMP: 260°C FOR 10 SECS MAX

**G = PA9T/PHOSPHOR BRONZE**  
 OPERATING TEMP: -65°C TO +125°C  
 PROCESSING TEMP: 260°C FOR 120 SECS MAX  
 (CONSULT FACTORY FOR OTHER MATERIALS)

**PLATING**

ALL PLATINGS ARE LEAD FREE AND HAVE .000050" NICKEL UNDERPLATE

|                   |                          |
|-------------------|--------------------------|
| CONTACT SURFACE   | TERMINATION              |
| B = .000010" GOLD | .000100" PURE TIN, MATTE |
| C = .000030" GOLD | .000100" PURE TIN, MATTE |
| Y = .000030" GOLD | .000005" GOLD            |

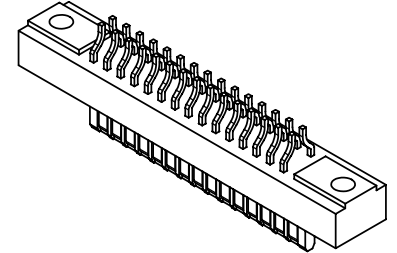
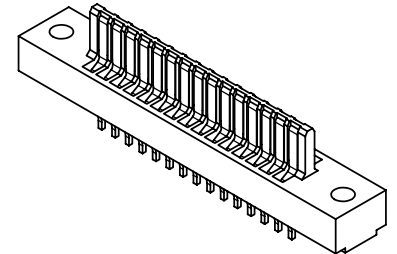
**MOUNTING STYLE**

D = FLUSH .125" DIA. CLEARANCE HOLES (PAGE 1)  
 N = NO MOUNTING EARS (PAGE 2)  
 Z = FLUSH, .125" DIA. SIDE MOUNTING (PAGE 2)  
 T = FLUSH, #4-40 THREADED INSERT (PAGE 2)  
 V = FLUSH, SIDE MOUNT #4-40 THREADED INSERT (PAGE 2)

**TERMINATION**

MR = CARD EXTENDER, .175[4.45] TAIL LENGTH  
 MN = CARD EXTENDER, .545[13.84] TAIL LENGTH

**NUMBER OF POSITIONS (CONTACTS PER ROW)**



**CUSTOMER COPY**



RoHS COMPLIANT

|   |  |  |                 |
|---|--|--|-----------------|
| UNLESS OTHERWISE SPECIFIED:<br>DIMENSIONS ARE IN INCHES[MM]   |  | DATE: 2/5/2008   | NAME: V. JARA   |
| TOLERANCES:<br>ANGULAR: ± 1°<br>XX = ± .02 [ .508]<br>.XXX = ± .005 [ .1270]<br>XXXX = ± .0005 [ .0127]<br>PARENTHEICAL INFORMATION IS FOR REFERENCE ONLY |  | THE INFORMATION HEREIN CONTAINS PROPRIETARY INFORMATION OF SULLINS ELECTRONICS AND IS NOT TO BE REPRODUCED, USED OR DISCLOSED TO OTHERS FOR ANY PURPOSE EXCEPT AS SPECIFICALLY AUTHORIZED IN WRITING BY AN OFFICER OF SULLINS ELECTRONICS. |                 |
| INTERPRET DIMENSIONS AND GEOMETRIC TOLERANCING PER: ANSI Y14.5-1984   |  | SIZE: C  | DWG. NO: C11050 |
|   |  | REV: B   | SCALE: 2:1      |
|   |  | SHEET 3 OF 3   |                 |