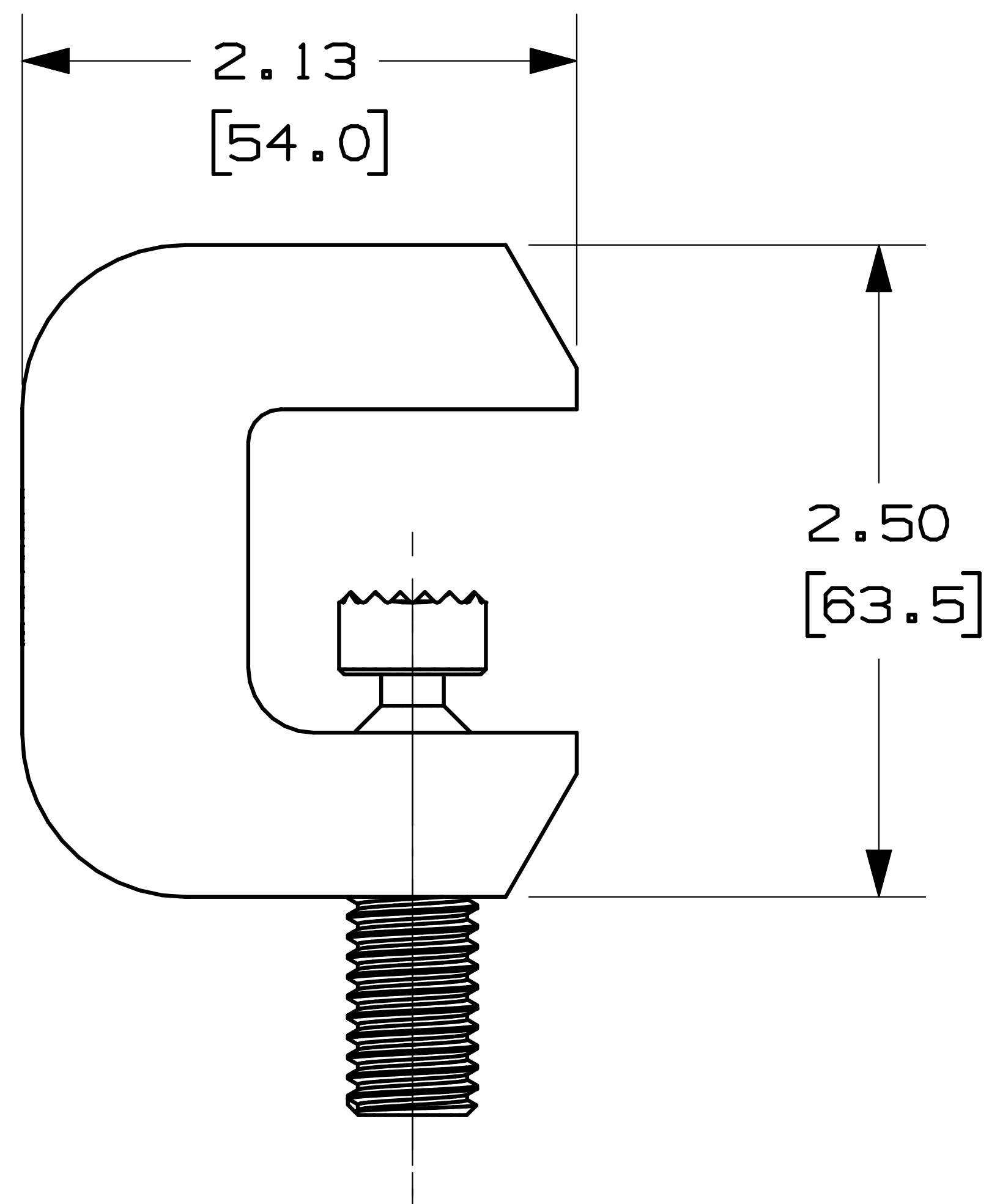
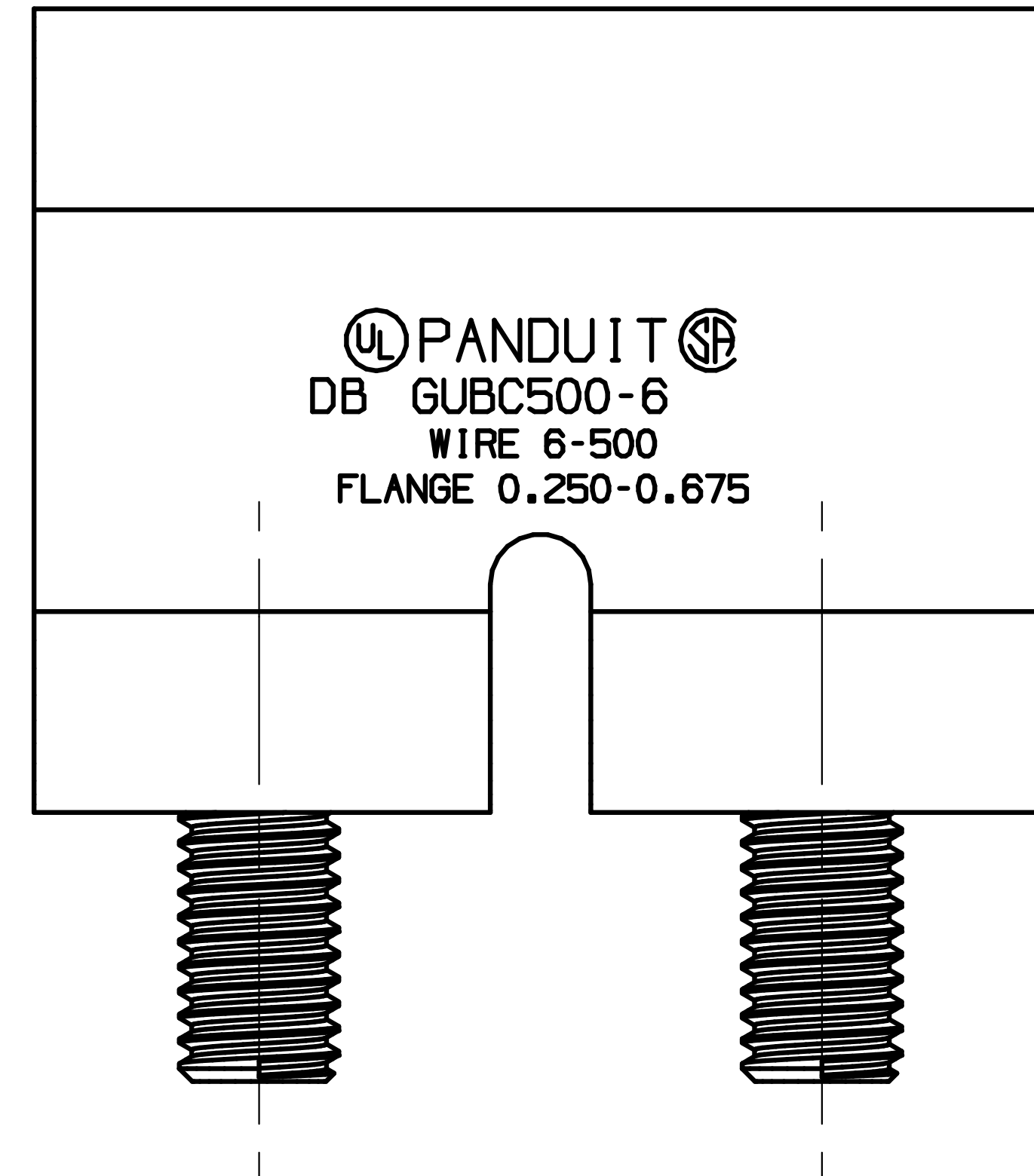
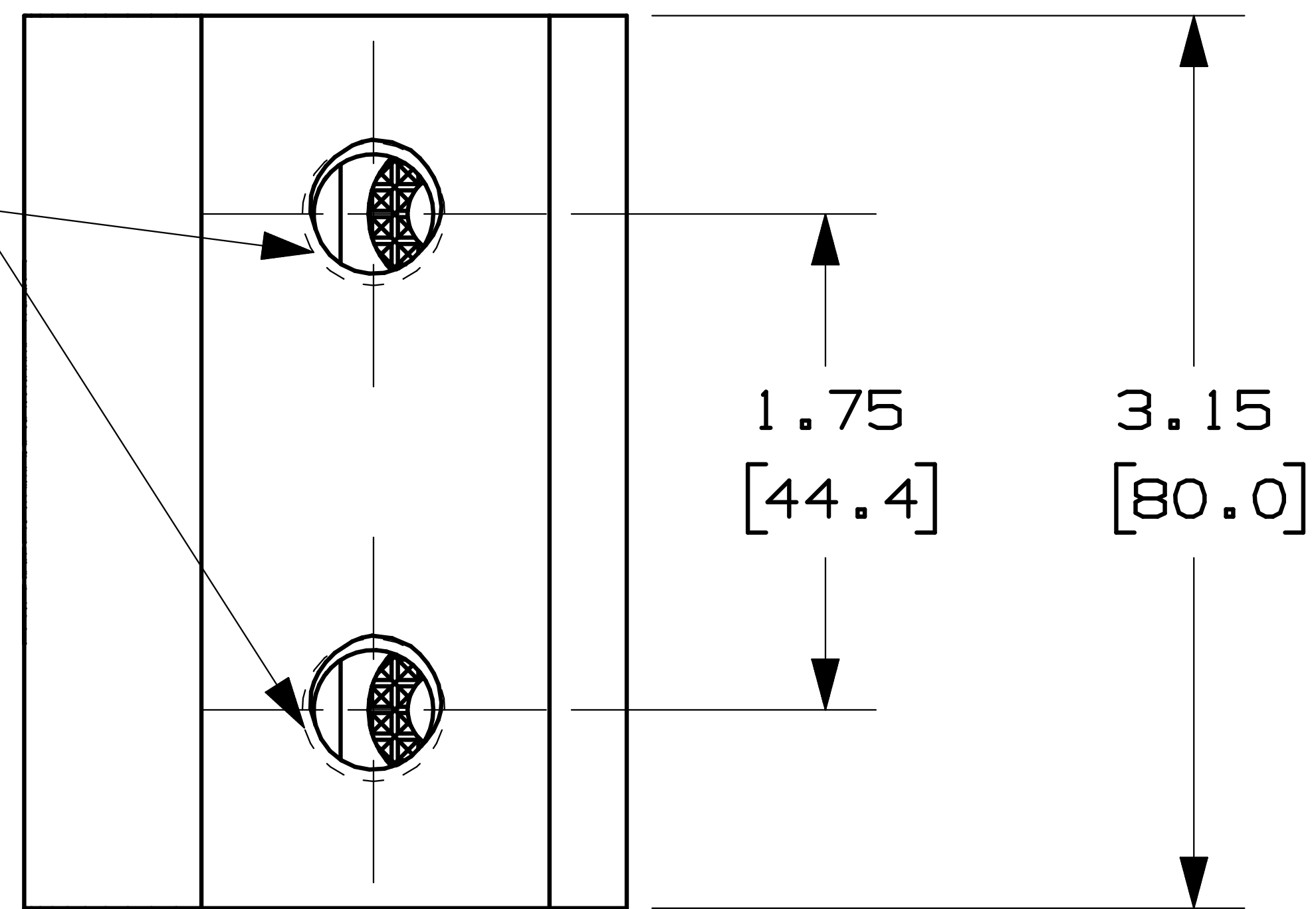


THIS COPY IS PROVIDED ON A RESTRICTED BASIS AND IS NOT TO BE USED IN ANY WAY DETRIMENTAL TO THE INTERESTS OF PANDUIT CORP.

1/2-13 THREAD
 -FOR USE WITH 1/2" STUD HOLE, 1 3/4" SPACING,
 2 HOLE COMPRESSION LUGS



UL PANDUIT
 DB GUBC500-6
 WIRE 6-500
 FLANGE 0.250-0.675

NOTES:

1. DIMENSIONS IN PARENTHESIS ARE MILLIMETERS.
2. FITS WIDE RANGE OF STANDARD (ANGLED) AND WIDE FLANGE (PARALLEL) STRUCTURAL STEEL BEAMS.
3. PROVIDES MOUNTING PAD SUITABLE FOR 2 HOLE COMPRESSION LUG.
4. UL 467 LISTED AND CSA 22.2 CERTIFIED FOR GROUNDING AND BONDING SUITABLE FOR DIRECT BURIAL IN EARTH OR CONCRETE.
5. PRE-APPLIED ANTIOXIDANT COMPOUND ENSURES A HIGH QUALITY MECHANICAL AND ELECTRICAL BOND, SPEEDING INSTALLATION.
6. HARDWARE KIT (GLMHK) SOLD SEPERATLEY FOR MOUNTING COMPRESSION LUG TO BEAM CLAMP.
7. MEETS IEEE STD 837-2002.

PANDUIT PART NUMBER	COPPER CONDUCTOR SIZE RANGE AWG - [MM]	FLANGE THICKNESS IN [MM]	THREAD SIZE FOR LUG ATTACHMENT	HEX SIZE	STD. PKG QTY
GUBC500-6	#6 AWG - 500 KCMIL (16-240 SQ MM)	.250-.675 [6.3-17.1]	1/2-13	1/4	1

CAD FILENAME/LAYERS N10725AE_DS_GUBC500-6_00A

PANDUIT CORP TINLEY PARK, ILLINOIS
 UNIVERSAL BEAM GROUNDING CLAMP (GUBC500-6)
 CUSTOMER DRAWING

UNLESS OTHERWISE SPECIFIED, DIMENSIONAL TOLERANCES ARE:
 (.X) ± .03
 (.XX) ± .03

UNLESS OTHERWISE SPECIFIED, ALL DIMENSIONS ARE GIVEN IN INCHES, THIRD ANGLE PROJECTION

DRAWN BY JHNU

MAT'L:

SCALE NONE

DATE 4/08

HIGH CONDUCTIVITY COPPER

DRAWING NO.

C41751

DWG

B

SIZE

REV	DATE	BY	CHK	DESCRIPTION	ECN	CUST
00	4/08	JHNU	RGB	DRAWING RELEASED		