

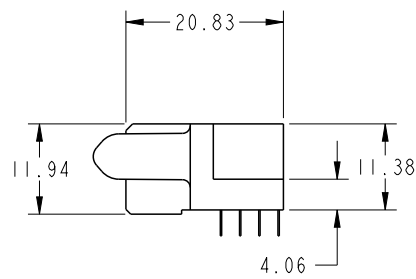
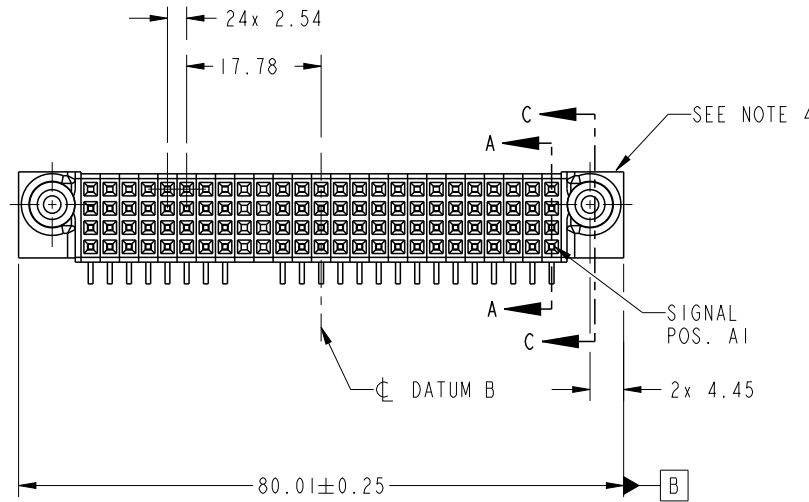
1

2

3

4

PRODUCT NO. 51770-056-- NOTE 3	ROWS D C B A	SIGNAL																										
		E2	25	24	23	22	21	20	19	18	17	16	15	14	13	12	11	10	9	8	7	6	5	4	3	2	1	E1
		H	H	H	H	H	H	H	X	X	H	H	H	H	H	H	H	H	H	H	H	H	H	H	H	H	H	H
		G	G	G	G	G	G	G	X	X	G	G	G	G	G	G	G	G	G	G	G	G	G	G	G	G	G	G
F	F	F	F	F	F	F	X	X	F	F	F	F	F	F	F	F	F	F	F	F	F	F	F	F	F	F		
E	E	E	E	E	E	E	X	X	E	E	E	E	E	E	E	E	E	E	E	E	E	E	E	E	E	E		



CODE	DIM "M" MATING LENGTH	CONTACT TYPE
H	[N/A]	SIGNAL
G	[N/A]	SIGNAL
F	[N/A]	SIGNAL
E	[N/A]	SIGNAL
X	[N/A]	OMITTED



Copyright FCI.

spec ref	SEE NOTES			dr	Ruan MT	2014/02/25	projection	MM	size	A4	scale	1:1
tolerance std	TOLERANCES UNLESS OTHERWISE SPECIFIED			eng	Ruan MT	2014/04/13			ecn no	-	rel level	Released
SEE NOTES				chr	-	-						
surface	linear	0.X	±0.50	appr	Pei-Ming Zheng	2014/04/13	product family	PwrBlade		rev	A	
		0.XX	±0.25			title	100S	dwg no	51770-056			
		0.XXX	±0.10								cat. no.	Product - Customer Drw
	angular	0°	±2°	www.fci.com								

PrdE File - REV C - 2009-06-09

1

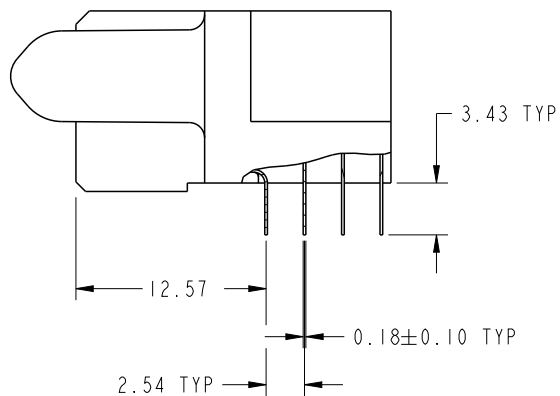
2

3

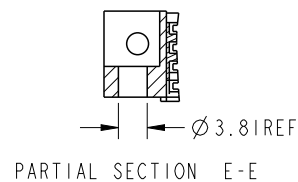
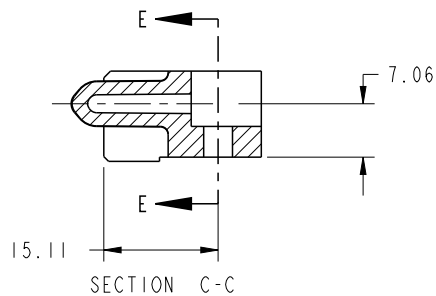
4

PRODUCT NUMBER

51770-056__
NOTE 3



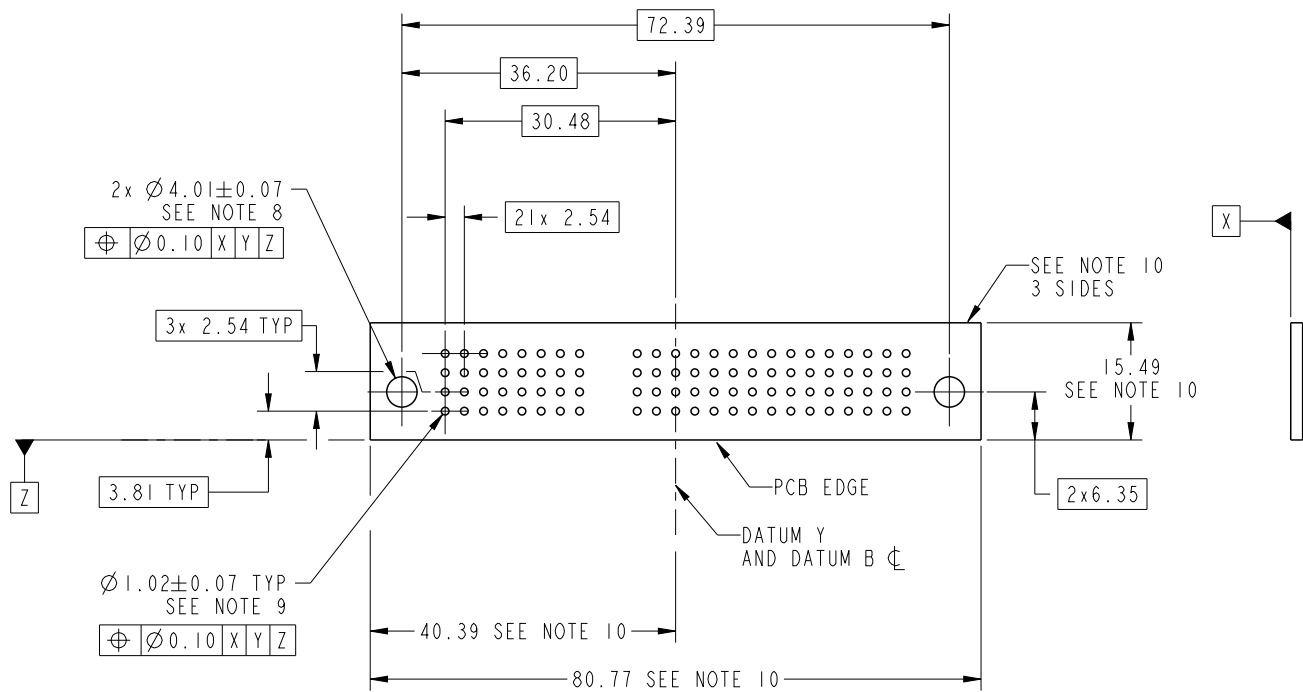
BROKEN-OUT SECTION A-A
SCALE 2:1



dr	Ruan MT	2014/02/25	projection 	MM 	size	A4	scale	1:1
eng	Ruan MT	2014/04/13			ecn no	-		
chr	-	-						
appr	Pei-Ming Zheng	2014/04/13	product family	PwrBlade	rel level	Released		
	title	100S R/A SOLDER RECEPTACLE		dwg no	51770-056		rev	A
www.fci.com	cat. no.	Product - Customer Drw			sheet 2 of 4			

PRODUCT NUMBER

51770-056__
NOTE 3



RECOMMENDED PCB LAYOUT



Copyright FCI.

dr	Ruan MT	2014/02/25	projection 	MM 	size	A4	scale	1:1
eng	Ruan MT	2014/04/13			ecn no	-		
chr	-	-						
appr	Pei-Ming Zheng	2014/04/13	product family	PwrBlade	rel level	Released		
	title	100S R/A SOLDER RECEPTACLE		dwg no	51770-056		rev	A
www.fci.com	cat. no.	Product - Customer Drw			sheet 3 of 4			

PRODUCT NUMBER

51770-056__
NOTE 3

NOTES:

1. DIMENSIONS AND TOLERANCES ARE IN ACCORDANCE WITH ASME Y14.5M, 1994 UNLESS OTHERWISE SPECIFIED.

CONNECTOR NOTES:

- 2. HOUSING MATERIAL: UL 94 V-0 GLASS FILLED HIGH-TEMP THERMOPLASTIC
POWER CONTACT MATERIAL: COPPER ALLOY
SIGNAL PIN MATERIAL: COPPER ALLOY
- 3. SEE ITEM 5 & 6 IN PRINT 10064183 FOR PLATING SPEC OF 51770-056 AND 51770-056LF RESPECTIVELY.

4. MANUFACTURER'S NAME, DATE CODE AND OPTIONAL P/N TO APPEAR ON THIS SURFACE. THE MARK CAN BE OMITTED IF THERE IS NOT ENOUGH SPACE ON THIS SURFACE.

5. PRODUCT SPECIFICATION GS-12-149.
APPLICATION SPECIFICATION BUS-20-067.

6. PACKAGED IN TRAYS.

PCB NOTES:

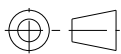
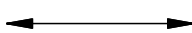

7. ALL HOLE DIAMETERS ARE FINISHED HOLE SIZE.

8. MOUNTING HOLES, WHERE APPLICABLE, ARE UNPLATED.

9. $\varnothing 1.151 \pm 0.025$ DRILLED HOLES PLATED WITH
0.008 MIN SnPb OR Sn OVER 0.03
TO 0.08 Cu PLATING TO ACHIEVE
 $\varnothing 1.02 \pm .07$ HOLE.

10. CONNECTOR KEEP-OUT ZONE.

11. THE VOID CORING IN BETWEEN POWER MODULES, SIGNAL MODULES AND END MODULES ARE OPTIONAL AND THE SHAPE MAY BE DIFFERENT FOR OPTIMIZE THE MOLDING PROCESS. THE VOID CORING WILL NOT EFFECT TO PRODUCT FUNCTION.

dr	Ruan MT	2014/02/25	projection 	MM 	size	A4	scale	1:1
eng	Ruan MT	2014/04/13			ecn no	-		
chr	-	-						
appr	Pei-Ming Zheng	2014/04/13	product family	PwrBlade	rel level	Released		
	title	100S R/A SOLDER RECEPTACLE		dwg no	51770-056		rev	A
www.fci.com	cat. no.	Product - Customer Drw			sheet 4 of 4			