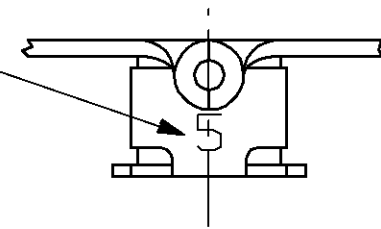
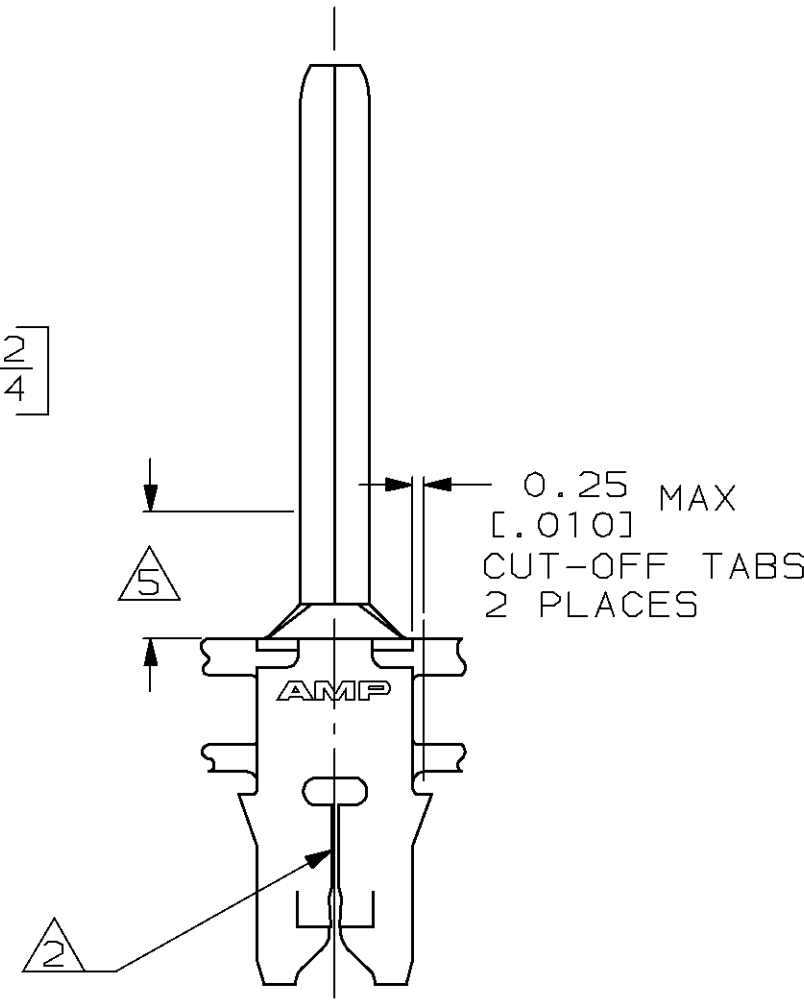
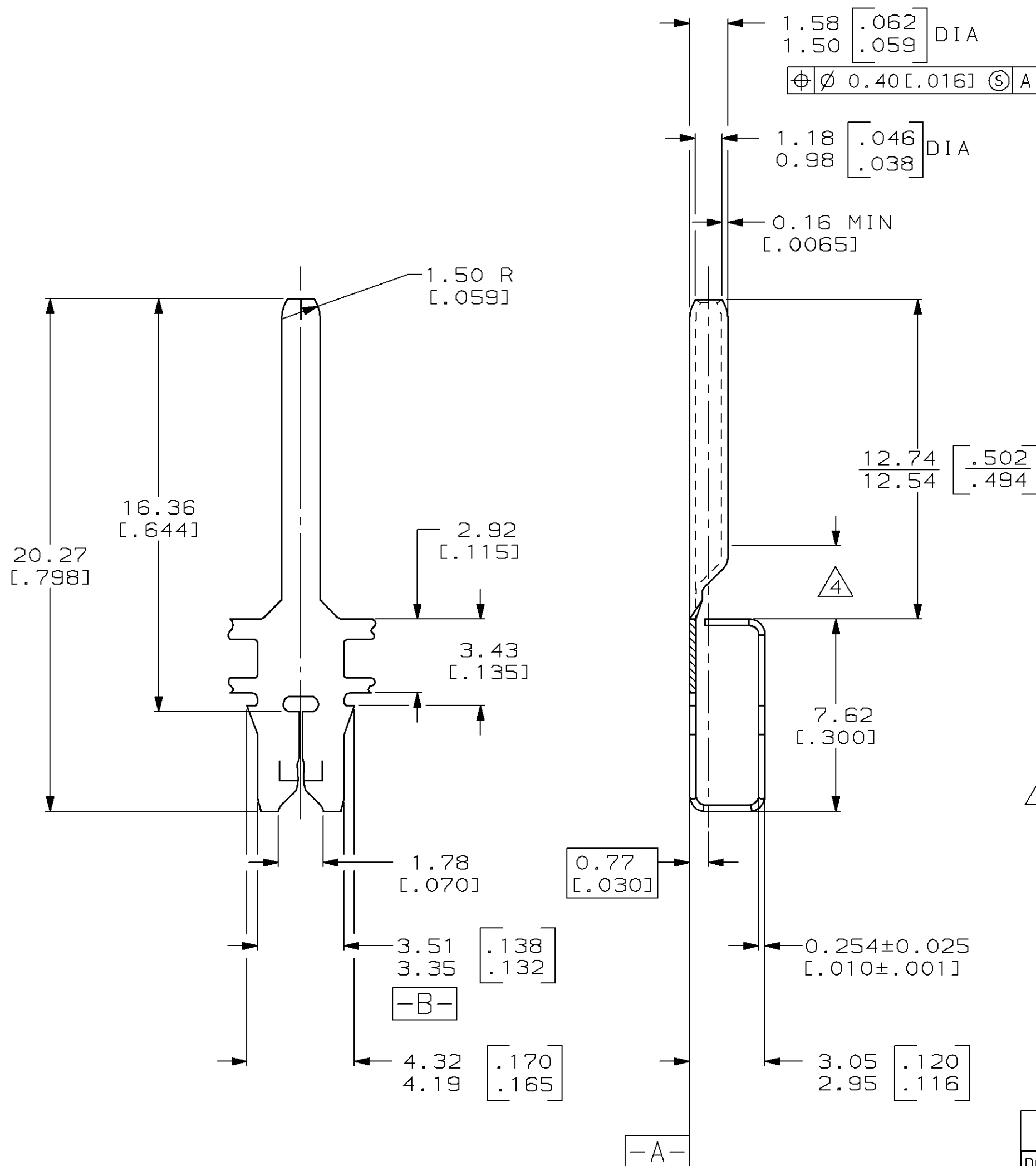


LOC		DIST		REVISIONS				
AF	50	P	F	ZONE	LTR	DESCRIPTION	DATE	APPD
					K	REVISE PER ECN 0G1A-0391-98	21NOV98	MF/KR

IDENTIFICATION NUMBER 5 FOR
MAGNET WIRE RANGE



- 1 CONTINUOUS STRIP ON REELS (NO SPLICES) WITH TERMINALS LOCATED ON 5.59±0.08 [.220±.003] CENTERS.
- 2 SLOT TERMINATES EITHER SINGLE OR DOUBLE COPPER MAGNET WIRES OF THE SAME SIZE, 0.23-0.32mm [#31-#28] AWG.
- 3 0.00203 [.000080]-0.00381 [.000150] PRE-TIN PL PER MIL-T-10727 OVER 0.00254 [.000100]-0.00508 [.000200] PRE-COPPER UNDERPLATE PER MIL-C-14550, WITH ANTI-CORROSION LUBE COATING.
- 4 2.90 [.114] MIN DISTANCE FOR BASE OF PIN TO BE CLOSED FOR INJECTION MOLDING.
- 5 2.80 [.110] MAX DISTANCE FOR TRANSITION FROM FLAT TO ROUND.



DO NOT SCALE PRINT. UNLESS SPECIFIED DIMENSIONS IN mm [INCHES] TOLERANCES ON:		DR 6/18/93 MICHAEL S. FEHER		AMP Incorporated Harrisburg, PA 17105-3608	
2 PLC DEC ± 0.25 [.010]		CHK 7/12/93 LORI A. MAYER			
3 PLC DEC ± -		APPD 7/12/93 KURT A. RANDOLPH		NAME	
ANGLES ± 1°		APPD 7/12/93 TERRY L. SHUTTER		PIN, 1.52 [.060] DIA, MAG-MATE™	
MATERIAL #4M BRASS		PRODUCT SPEC 108-2012			
FINISH		APPLICATION SPEC 114-2046		SIZE C	CAGE CODE 00779
THIS DRAWING IS A CONTROLLED DOCUMENT FOR AMP INCORPORATED. IT IS SUBJECT TO CHANGE AND THE CONTROLLING ENGINEERING ORGANIZATION SHOULD BE CONTACTED FOR THE LATEST REVISION.		WEIGHT -		SCALE 6:1	DRAWING NO C=63722
				SHEET 1 OF 1	