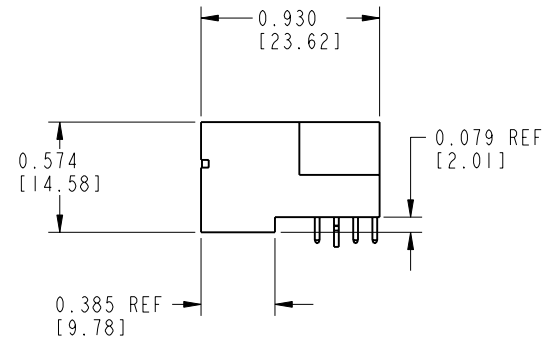
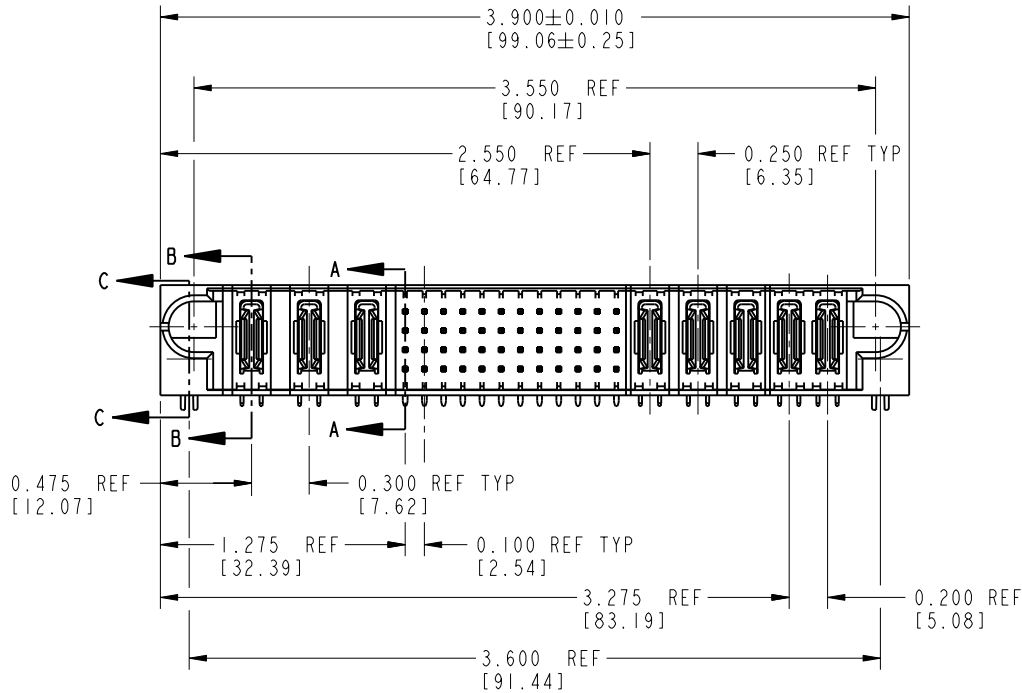
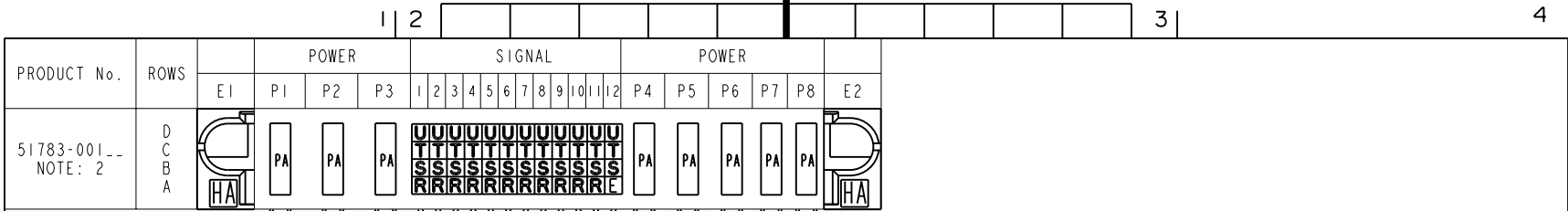


Tous droits strictement réservés. Reproduction ou communication o des liens interdite sous quelque forme que ce soit sans autorisation écrite du propriétaire. Propriété de c FCI. Droits de reproduction FCI.

All rights strictly reserved. Reproduction or issue to third parties in any form, whenever is not permitted without written authority from the proprietor. Property of FCI. Copyright FCI.



CODE	DIM "M" ±.010 [0.25]		CONTACT TYPE
E	0.220	[5.59]	SIGNAL
R	0.270	[6.86]	SIGNAL
S	0.270	[6.86]	SIGNAL
T	0.270	[6.86]	SIGNAL
U	0.270	[6.86]	SIGNAL
PA	N/A	[N/A]	POWER
HA	N/A	[N/A]	HOLD-DOWN

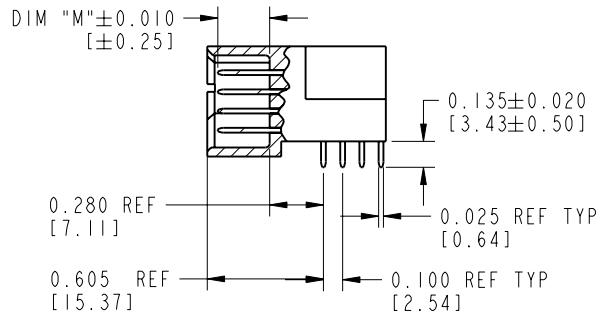
mat'l code				SEE NOTE 1		tolerances unless otherwise specified		CUSTOMER COPY		www.fciconnect.com	
ltr	ecn no.	dr	date	linear	.XX±.01/.X±.3		projection		title		code
A	V02393	JRW	10-27-00		.XXX±.005/.X±.13				3ACP + 48S + 5P		
B	V12230	JRW	09-17-01	angles	.XXXX±.0020/.XXX±.051				product family		size
C	DG05-0572	JMG	01/04/06		0°±2°		INCH / MM		PwrBlade		
				dr	C. BAROT	05-07-00	scale		A		51783
				engr	J. BROWN	05-07-00	1:1				SHEET
				chr	J. BROWN	05-07-00					1 OF 3
				appd	J. BROWN	05-07-00					
sheet index		revision sheet		C	C	C			cage code		
		1 2 3							22526		

Tous droits strictement réservés. Reproduction ou communication o des liers interalle sous quelque forme que ce soit sans autorisation écrite du propriétaire. Propriete de c FCI. Droits de reproduction FCI.

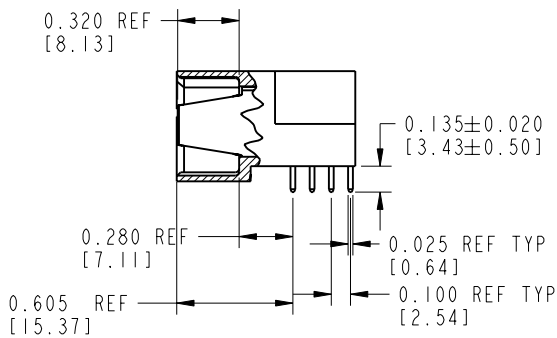
All rights strictly reserved. Reproduction or issue to third parties in any form, whenever is not permitted without written authority from the proprietor. Property of FCI. Copyright FCI.

PRODUCT NUMBER

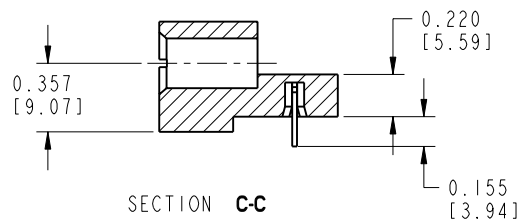
51783-001--  
NOTE: 2



SECTION A-A

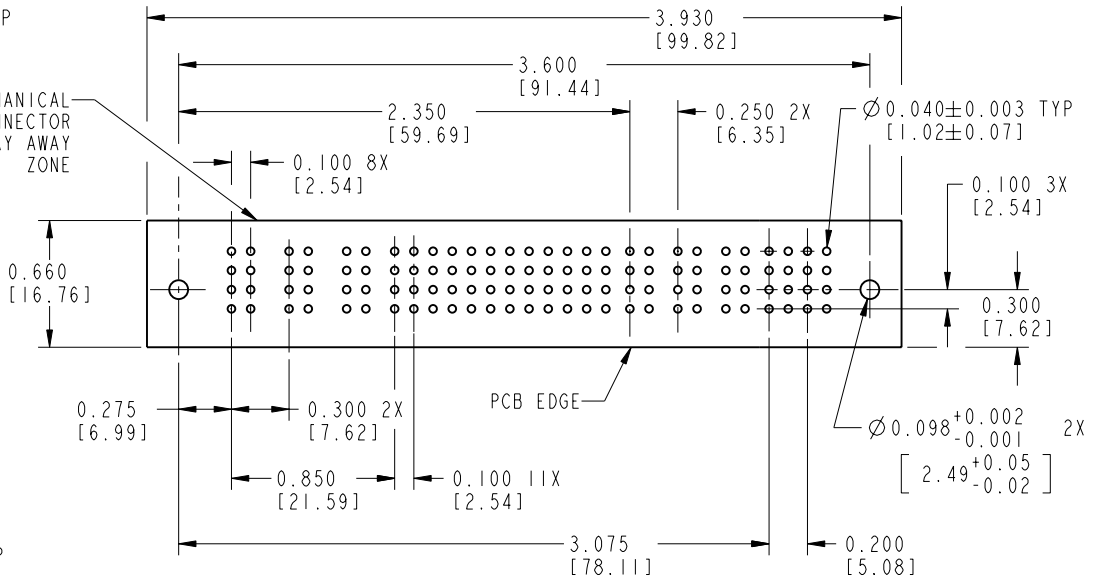


SECTION B-B



SECTION C-C

MECHANICAL CONNECTOR STAY AWAY ZONE



RECOMMENDED PCB LAYOUT

mat'l code				SEE NOTE 1		tolerances unless otherwise specified		CUSTOMER COPY		www.fciconnect.com	
lfr	ecn no.	dr	date	linear	.XX±.01/.X±.3	projection				title	
c				angles	.XXX±.005/.X±.13			INCH / MM		3ACP + 48S + 5P	
				dr	.XXXX±.0020/.XXX±.051			scale		RIGHT ANGLE SOLDER HEADER	
				enqr	0°±2°			1:1		product family	
				chr	C. BAROT 05-07-00					PwrBlade	
				appd	J. BROWN 05-07-00					code	
					J. BROWN 05-07-00					213	
sheet index		revision sheet								SHEET 2	
										2	

form no. 7530-001-103

code code 22526

PDM: Rev:C

STATUS: Released

Printed: Oct 07, 2006

Tous droits strictement reserves. Reproduction ou communication o des liers interdite sous quelque forme que ce soit sans autorisation écrite du propriétaire. Propriete de c FCI. Droits de reproduction FCI.



All rights strictly reserved. Reproduction or issue to third parties in any form, whomever is not permitted without written authority from the proprietor. Property of FCI. Copyright FCI.

**PRODUCT NUMBER**  
51783-001\_\_  
NOTE: 2

**CONNECTOR NOTES:**

- 1. HOUSING MATERIAL: UL 94 V-0 GLASS FILLED HIGH TEMP THERMOPLASTIC  
POWER CONTACT MATERIAL: COPPER ALLOY  
SIGNAL CONTACT MATERIAL: COPPER ALLOY
- 2. PLATING:

51783-001 Signal Pin:30u"/0.76um Au OVER 50u"/1.27um Ni ON THE CONTACT AREA.  
AND 100u"/2.54um SnPb PLATING OVER 50u"/1.27um Ni ON THE TERMINATION SECTION.  
Power Pin:30u"/0.76um Au OVER 50u"/1.27um Ni ON THE CONTACT AREA,  
AND 100u"/2.54um SnPb PLATING OVER 50u"/1.27um Ni ON THE TERMINATION SECTION.

51783-001LF Signal Pin:30u"/0.76um Au OVER 50u"/1.27um Ni ON THE CONTACT AREA.  
AND 78u"/2.00um Sn PLATING OVER 50u"/1.27um Ni ON THE TERMINATION SECTION.  
Power Pin:30u"/0.76um Au OVER 50u"/1.27um Ni ON THE CONTACT AREA,  
AND 78u"/2.00um Sn PLATING OVER 50u"/1.27um Ni ON THE TERMINATION SECTION.

PART NUMBER 51783-001LF MEETS EUROPEAN UNION DIRECTIVE AND OTHER COUNTRY REGULATIONS AS DESCRIBED IN GS-22-008.

THE HOUSING WILL WITHSTAND EXPOSURE TO 260° PEAK TEMPERATURE FOR 10 SECONDS IN A WAVE SOLDER APPLICATION WITH A CIRCUIT BOARD.

- 3. "MANUFACTURER'S" NAME, P/N, AND DATE CODE TO APPEAR ON THIS SURFACE
- 4. PRODUCT SPECIFICATION GS-12-149

**PCB NOTES:**

- 5. ALL DIMENSIONS ARE BASIC UNLESS OTHERWISE SPECIFIED.
- 6. ALL THROUGH HOLES ARE LOCATED WITH A TRUE POSITION OF 0.004 [0.10]
- 7. ALL HOLE DIAMETERS ARE FINISHED HOLE SIZE
- 8. Ø0.126[3.20] THROUGH HOLES ARE UNPLATED.
- 9. Ø0.0453±0.0010 [1.151±0.025] DRILLED HOLES PLATED WITH 0.0003 [0.008] MIN SnPb OVER 0.001 [0.03] TO 0.003 [0.08] Cu PLATING TO ACHIEVE A Ø0.040±0.003 [1.02±0.07] HOLE.

THIS FILE WAS ORIGINALLY CREATED IN THE PRO ENGINEER ENVIRONMENT AND ANY FUTURE REVISIONS TO THIS FILE MUST BE MADE IN THE PRO ENGINEER ENVIRONMENT

mat'l code		SEE NOTES		tolerances unless otherwise specified		CUSTOMER		www.fciconnect.com	
ltr	ecr no.	dr	date	linear	.XX±.01/0.XX±0.3	COPY			
C				angles	.XXX±.005/0.XX±0.13	projection			title 3ACP + 48S + 5P RIGHT ANGLE SOLDER HEADER
				dr	.XXX±.0005/0.XXX±.051	INCH/MM			
				engr	0°±2°	scale		product family PwrBlade size A	code 213 sheet 3
				chr	C. BAROT 05-07-00	1:1			
				appd	J. BROWN 05-07-00			51783	3
					J. BROWN 05-07-00				
sheet index	revision sheet								