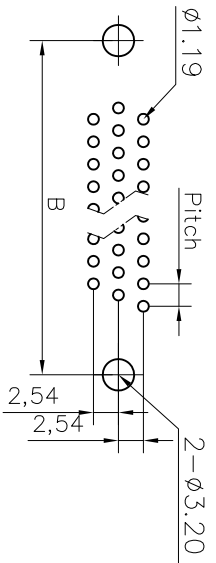
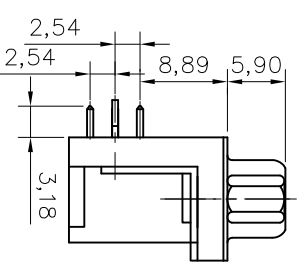
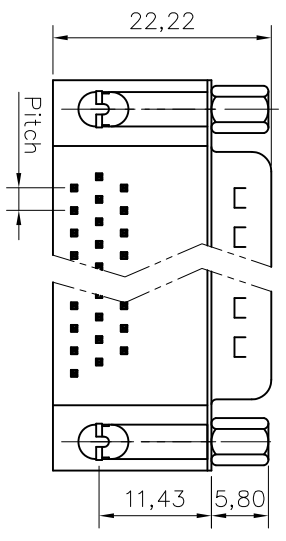
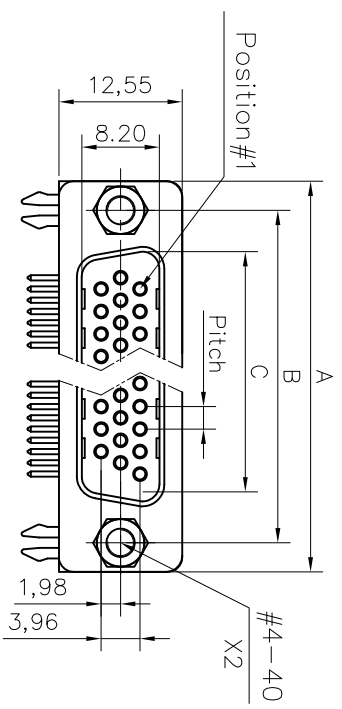


This document is the property of Amphenol Corporation and is intended for use only under the terms of the license agreement between Amphenol Corporation and the user. It is not to be distributed, reproduced or used, in whole or in part, without the prior consent of Amphenol Corporation. Amphenol Corporation reserves the right to modify the specifications or to use any information in this document.



RECOMMENDED P.C.B. LAYOUT
(TOLERANCE +/-0.03)



Customer drawing

DIM.S	A	B	C	Pitch
15 SHELL	30.84	24.99	16.92	2.29
26	39.24	33.32	25.25	2.29
44	53.04	47.04	38.96	2.29
62	69.34	63.50	55.42	2.41

REVISONS		DATE	APPROVED
1	SWM	02/29/09	IP

D-SUB TECHNICAL DATA

SHELL : Steel 2.5um(100u") min tin over 1.25um(50u") min nickel
BODY : Glass filled thermoplastic,high temperature
 Flame retardant to UL94 V-0 Color Black

CONTACTS : Brass
 Gold flash over 1.25um(50u") min nickel, 100u" tin over 50u" nnickel.

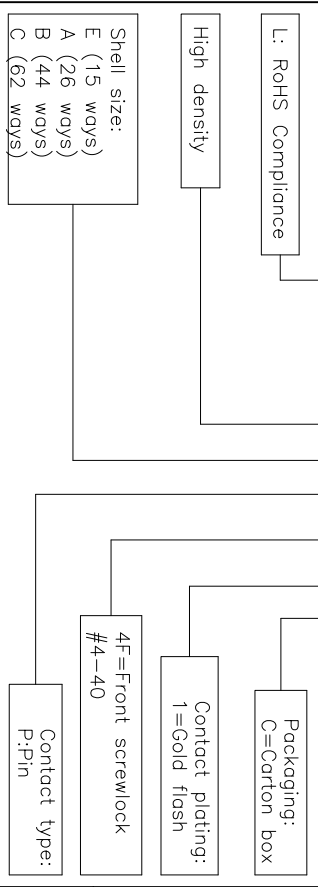
REAR INSERT : Brass,100u" min tin over 50u" min nickel
BOARDLOCK : Brass,100u" min tin over 50u" min nickel
ELECTRICAL : Voltage rating : 600 V RMS at 50 Hz
 Current rating 3A.
 Insulation resistance >5000 M Ohms
 Contact resistance 20mOhms max.

CLIMATIC : Temperature range -55 °C up to 150°C

MARKING : Amphenol...(Series No.)
 Commercial reference
 Manufacturing date

PRODUCT CODE

L 17HT H X P 4F 1 C



OTHERS OTHERWISE SPECIFIED		APPROVAL		DATE	
TOLERANCES		DRAWN		02/29/09	
U.S.		CHECKED		02/29/09	
METRIC		Lsk. using		02/29/09	
X +/-		0.50			
XX +/-		0.30			
XXX +/-		0.20			
ANGLES +/-		2°			
SYN. MATERIALS AND FINISHES		DRAWING FILE :		TITLE	
REMOVE SHARP EDGES		ANGLE OF PROJECTION		D-SUB connectors, HTH series	
DIMENSIONS		SIZE: DRAWING NO.		A4	
FINISHES		SCALE		C L17HTHXRP4F1C	
MATERIAL		SHEET 1 OF 1		REV. 1	