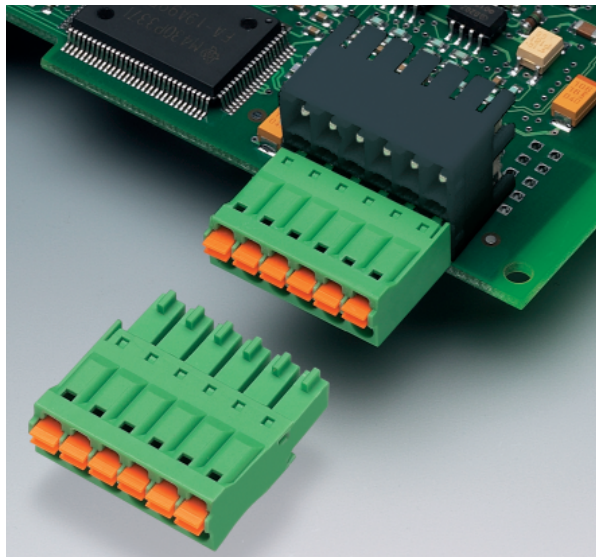


MINI COMBICON Double-Level Headers for Through Hole Reflow Processes, MCDN 1,5/... 3.5 mm Pitch

The MCDN(V) 1,5/... double-level headers feature minimum space requirement on the PCB, and at the same time, high contact density. It goes without saying that the headers are designed as reflow-capable components for the SMT process. The headers are available with two different pin lengths, horizontal or vertical plug-in direction, and with 2 to 20 positions. There is also a version with lateral self-locking flanges for engaging the connector to the header. LCP (Liquid Crystal Polymer), a material that has a high thermal stability in the reflow solder process, is used as insulating material. Peak temperatures above 260 °C are quite possible during the solder process.



COMBICON Select

The COMBICON search engine with CAD downloading

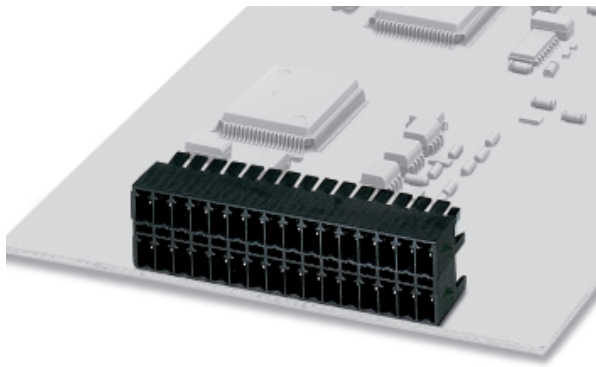


COMBICON Select – the printed circuit board connection software supports your workflow from the PCB and housing layout to the ordering process with:

- Systematic and fast selection of products
- Universal Internet aided engineering with extensive CAD downloading
- Easy-to-use e-shopping functions.

<http://select.phoenixcontact.com>

MCDN 1,5/...-G1-3,5 P14 THR 3.5 mm Pitch



Note:

COMBICON plug connectors may only be actuated in the no-load condition. If smaller loads need to be switched for operational reasons, experimental values are available on request.

Description	No. of pos.	Dim. a [mm]	Type	Order No.	Pcs./Pkt.
Double-level headers, plug-in direction horizontal to the printed circuit board, 3.5 mm pitch, pin length: 1.4 mm, color: black,	2	3.5	MCDN 1,5/2-G1-3,5 P14THR	19 53 90 7	50
	3	7	MCDN 1,5/3-G1-3,5 P14THR	19 53 92 3	
	4	10.5	MCDN 1,5/4-G1-3,5 P14THR	19 53 93 6	
	5	14	MCDN 1,5/5-G1-3,5 P14THR	19 53 94 9	
	6	17.5	MCDN 1,5/6-G1-3,5 P14THR	19 53 95 2	
	7	21	MCDN 1,5/7-G1-3,5 P14THR	19 53 96 5	
	8	24.5	MCDN 1,5/8-G1-3,5 P14THR	19 53 97 8	
	9	28	MCDN 1,5/9-G1-3,5 P14THR	19 53 98 1	
	10	31.5	MCDN 1,5/10-G1-3,5 P14THR	19 53 99 4	
	11	35	MCDN 1,5/11-G1-3,5 P14THR	19 54 00 3	
	12	38.5	MCDN 1,5/12-G1-3,5 P14THR	19 54 03 2	
	13	42	MCDN 1,5/13-G1-3,5 P14THR	19 54 04 5	
	14	45.5	MCDN 1,5/14-G1-3,5 P14THR	19 54 05 8	
	15	49	MCDN 1,5/15-G1-3,5 P14THR	19 54 06 1	
	16	52.5	MCDN 1,5/16-G1-3,5 P14THR	19 54 07 4	
	17	56	MCDN 1,5/17-G1-3,5 P14THR	19 54 08 7	
	18	59.5	MCDN 1,5/18-G1-3,5 P14THR	19 54 09 0	
	19	63	MCDN 1,5/19-G1-3,5 P14THR	19 54 10 0	
	20	66.5	MCDN 1,5/20-G1-3,5 P14THR	19 54 11 3	

(1) **Coding profile**, is inserted into the groove on the plug after the reflow/assembly process, insulating material: red



(2) **Marker card**, with 14 pcs. 10-section marker strips, white, self-adhesive, for 140 terminal blocks

Technical data

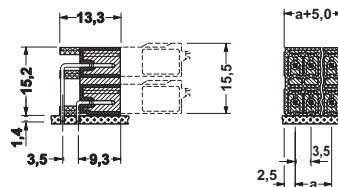
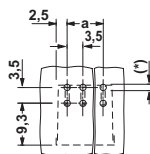
Dimensions		
Pitch		[mm]
Hole diameter		[mm]
Pin dimensions		[mm]x[mm]
Technical data in accordance with IEC/ DIN VDE		
Insulating material group		-
Surge voltage category / contamination class		-/-
Rated voltage		[V]
Rated surge voltage		[kV]
Nominal current / cross section		[A]/[mm ²]
Maximum load current / cross section		[A]/[mm ²]
Insulating material		
Inflammability class in acc. with UL 94		

CP-MSTB	17 34 63 4	100
SK 3,5/2,8 (see COMBICON catalog)		

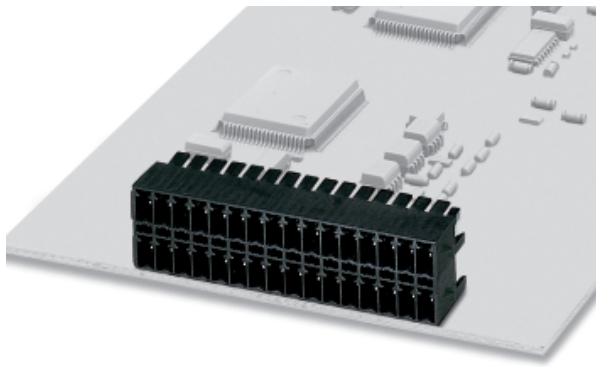
see description

3.5
≤ 8-pos. = 1.3 / > 8-pos. = 1.4
0.8 x 0.8

	IIIa	III / 2	II / 2
	160	200	250
	2.5	2.5	2.5
		6 / -	6 / -
		LCP	
		V0	



MCDN 1,5/...-G1-3,5 P26 THR 3.5 mm Pitch



Note:

COMBICON plug connectors may only be actuated in the no-load condition. If smaller loads need to be switched for operational reasons, experimental values are available on request.

Description	No. of pos.	Dim. a [mm]	Type	Order No.	Pcs./Pkt.
Double-level headers, plug-in direction horizontal to the printed circuit board, 3.5 mm pitch, pin length: 2.6 mm, color: black,	2	3.5	MCDN 1,5/2-G1-3,5 P26THR	19 53 71 6	50
	3	7	MCDN 1,5/3-G1-3,5 P26THR	19 53 72 9	
	4	10.5	MCDN 1,5/4-G1-3,5 P26THR	19 53 73 2	
	5	14	MCDN 1,5/5-G1-3,5 P26THR	19 53 74 5	
	6	17.5	MCDN 1,5/6-G1-3,5 P26THR	19 53 75 8	
	7	21	MCDN 1,5/7-G1-3,5 P26THR	19 53 76 1	
	8	24.5	MCDN 1,5/8-G1-3,5 P26THR	19 53 77 4	
	9	28	MCDN 1,5/9-G1-3,5 P26THR	19 53 78 7	
	10	31.5	MCDN 1,5/10-G1-3,5 P26THR	19 53 79 0	
	11	35	MCDN 1,5/11-G1-3,5 P26THR	19 53 80 3	
	12	38.5	MCDN 1,5/12-G1-3,5 P26THR	19 53 81 6	
	13	42	MCDN 1,5/13-G1-3,5 P26THR	19 53 82 9	
	14	45.5	MCDN 1,5/14-G1-3,5 P26THR	19 53 84 2	
	15	49	MCDN 1,5/15-G1-3,5 P26THR	19 53 85 5	
	16	52.5	MCDN 1,5/16-G1-3,5 P26THR	19 53 86 8	
	17	56	MCDN 1,5/17-G1-3,5 P26THR	19 53 87 1	
	18	59.5	MCDN 1,5/18-G1-3,5 P26THR	19 53 88 4	
	19	63	MCDN 1,5/19-G1-3,5 P26THR	19 53 89 7	
	20	66.5	MCDN 1,5/20-G1-3,5 P26THR	19 53 90 0	

(1) **Coding profile**, is inserted into the groove on the plug after the reflow/assembly process, insulating material: red



(2) **Marker card**, with 14 pcs. 10-section marker strips, white, self-adhesive, for 140 terminal blocks

Technical data

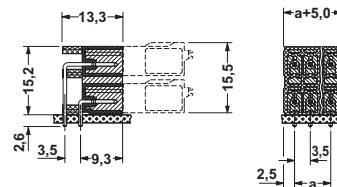
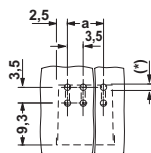
Dimensions	
Pitch	[mm]
Hole diameter	[mm]
Pin dimensions	[mm]x[mm]
Technical data in accordance with IEC/ DIN VDE	
Insulating material group	-
Surge voltage category / contamination class	-/-
Rated voltage	[V]
Rated surge voltage	[kV]
Nominal current / cross section	[A]/[mm²]
Maximum load current / cross section	[A]/[mm²]
Insulating material	
Inflammability class in acc. with UL 94	

CP-MSTB	17 34 63 4	100
SK 3,5/2,8 (see COMBICON catalog)		

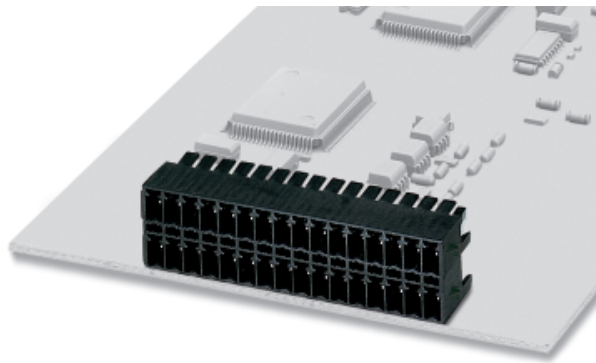
see description

3.5
≤ 8-pos. = 1.3 / > 8-pos. = 1.4
0.8 x 0.8

III / 3	IIIa	III / 2	II / 2
160	200	200	250
2.5	2.5	2.5	2.5
6 / -	6 / -	6 / -	6 / -
		LCP	
		V0	



MCDN 1,5/...-G1-3,5 RNP14 THR 3.5 mm Pitch



Note:

COMBICON plug connectors may only be actuated in the no-load condition. If smaller loads need to be switched for operational reasons, experimental values are available on request.

Description	No. of pos.	Dim. a [mm]	Type	Order No.	Pcs./Pkt.
Double-level headers, plug-in direction horizontal to the printed circuit board, 3.5 mm pitch, with engagement latch, pin length: 1.4 mm, color: black,	2	3.5	MCDN 1,5/2-G1-3,5 RNP14THR	19 53 20 8	50
	3	7	MCDN 1,5/3-G1-3,5 RNP14THR	19 53 21 1	
	4	10.5	MCDN 1,5/4-G1-3,5 RNP14THR	19 53 22 4	
	5	14	MCDN 1,5/5-G1-3,5 RNP14THR	19 53 23 7	
	6	17.5	MCDN 1,5/6-G1-3,5 RNP14THR	19 53 24 0	
	7	21	MCDN 1,5/7-G1-3,5 RNP14THR	19 53 25 3	
	8	24.5	MCDN 1,5/8-G1-3,5 RNP14THR	19 53 26 6	
	9	28	MCDN 1,5/9-G1-3,5 RNP14THR	19 53 27 9	
	10	31.5	MCDN 1,5/10-G1-3,5 RNP14THR	19 53 28 2	
	11	35	MCDN 1,5/11-G1-3,5 RNP14THR	19 53 29 5	
	12	38.5	MCDN 1,5/12-G1-3,5 RNP14THR	19 53 30 5	
	13	42	MCDN 1,5/13-G1-3,5 RNP14THR	19 53 31 8	
	14	45.5	MCDN 1,5/14-G1-3,5 RNP14THR	19 53 32 1	
	15	49	MCDN 1,5/15-G1-3,5 RNP14THR	19 53 33 4	
	16	52.5	MCDN 1,5/16-G1-3,5 RNP14THR	19 53 35 0	
	17	56	MCDN 1,5/17-G1-3,5 RNP14THR	19 53 36 3	
	18	59.5	MCDN 1,5/18-G1-3,5 RNP14THR	19 53 37 6	
	19	63	MCDN 1,5/19-G1-3,5 RNP14THR	19 53 38 9	
	20	66.5	MCDN 1,5/20-G1-3,5 RNP14THR	19 53 39 2	

(1) **Coding profile**, is inserted into the groove on the plug after the reflow/assembly process, insulating material: red



(2) **Marker card**, with 14 pcs. 10-section marker strips, white, self-adhesive, for 140 terminal blocks

Technical data

Dimensions	
Pitch	[mm]
Hole diameter	[mm]
Pin dimensions	[mm]x[mm]

Technical data in accordance with IEC/ DIN VDE

Insulating material group	-
Surge voltage category / contamination class	-/-
Rated voltage	[V]
Rated surge voltage	[kV]
Nominal current / cross section	[A]/[mm ²]
Maximum load current / cross section	[A]/[mm ²]

Insulating material

Inflammability class in acc. with UL 94

CP-MSTB

17 34 63 4

100

SK 3,5/2,8

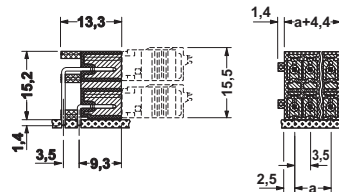
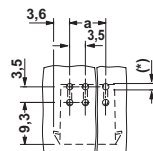
(see COMBICON catalog)

see description

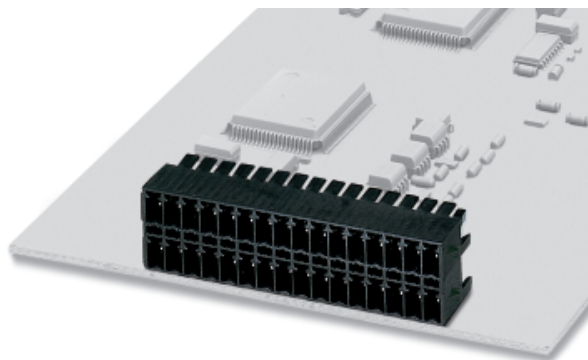
3.5

≤ 8-pos. = 1.3 / > 8-pos. = 1.4

0.8 x 0.8



MCDN 1,5/...-G1-3,5 RNP26 THR 3.5 mm Pitch



Note:

COMBICON plug connectors may only be actuated in the no-load condition. If smaller loads need to be switched for operational reasons, experimental values are available on request.

Description	No. of pos.	Dim. a [mm]	Type	Order No.	Pcs./Pkt.
Double-level headers, plug-in direction horizontal to the printed circuit board, 3.5 mm pitch, with engagement latch, pin length: 2.6 mm, color: black,	2	3.5	MCDN 1,5/2-G1-3,5 RNP26THR	19 53 40 2	50
	3	7	MCDN 1,5/3-G1-3,5 RNP26THR	19 53 41 5	
	4	10.5	MCDN 1,5/4-G1-3,5 RNP26THR	19 53 42 8	
	5	14	MCDN 1,5/5-G1-3,5 RNP26THR	19 53 55 4	
	6	17.5	MCDN 1,5/6-G1-3,5 RNP26THR	19 53 56 7	
	7	21	MCDN 1,5/7-G1-3,5 RNP26THR	19 53 57 0	
	8	24.5	MCDN 1,5/8-G1-3,5 RNP26THR	19 53 58 3	
	9	28	MCDN 1,5/9-G1-3,5 RNP26THR	19 53 59 6	
	10	31.5	MCDN 1,5/10-G1-3,5 RNP26THR	19 53 60 6	
	11	35	MCDN 1,5/11-G1-3,5 RNP26THR	19 53 61 9	
	12	38.5	MCDN 1,5/12-G1-3,5 RNP26THR	19 53 62 2	
	13	42	MCDN 1,5/13-G1-3,5 RNP26THR	19 53 63 5	
	14	45.5	MCDN 1,5/14-G1-3,5 RNP26THR	19 53 64 8	
	15	49	MCDN 1,5/15-G1-3,5 RNP26THR	19 53 65 1	
	16	52.5	MCDN 1,5/16-G1-3,5 RNP26THR	19 53 66 4	
	17	56	MCDN 1,5/17-G1-3,5 RNP26THR	19 53 67 7	
	18	59.5	MCDN 1,5/18-G1-3,5 RNP26THR	19 53 68 0	
	19	63	MCDN 1,5/19-G1-3,5 RNP26THR	19 53 69 3	
	20	66.5	MCDN 1,5/20-G1-3,5 RNP26THR	19 53 70 3	

(1) **Coding profile**, is inserted into the groove on the plug after the reflow/assembly process, insulating material: red



(2) **Marker card**, with 14 pcs. 10-section marker strips, white, self-adhesive, for 140 terminal blocks

CP-MSTB	17 34 63 4	100
SK 3,5/2,8 (see COMBICON catalog)		

Technical data

Dimensions	
Pitch	[mm]
Hole diameter	[mm]
Pin dimensions	[mm]x[mm]

see description
3.5
≤ 8-pos. = 1.3 / > 8-pos. = 1.4
0.8 x 0.8

Technical data in accordance with IEC/ DIN VDE

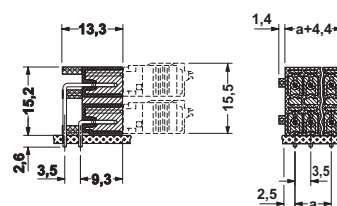
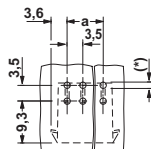
Insulating material group	-
Surge voltage category / contamination class	-/-
Rated voltage	[V]
Rated surge voltage	[kV]
Nominal current / cross section	[A]/[mm²]
Maximum load current / cross section	[A]/[mm²]

III / 3	IIIa	III / 2	II / 2
160	200	250	
2.5	2.5	2.5	

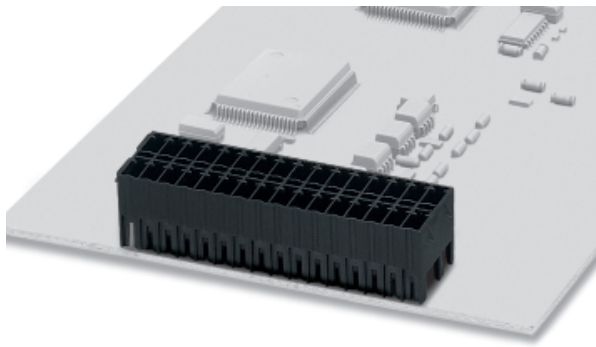
Insulating material

Inflammability class in acc. with UL 94

LCP
V0



MCDNV 1,5/...-G1-3,5 P14 THR 3.5 mm Pitch



Note:

COMBICON plug connectors may only be actuated in the no-load condition. If smaller loads need to be switched for operational reasons, experimental values are available on request.

Description	No. of pos.	Dim. a [mm]	Type	Order No.	Pcs./Pkt.
Double-level headers, plug-in direction vertical to the printed circuit board, 3.5 mm pitch, pin length: 1.4 mm, color: black,	2	3.5	MCDNV 1,5/2-G1-3,5 P14THR	19 52 97 9	50
	3	7	MCDNV 1,5/3-G1-3,5 P14THR	19 52 98 2	
	4	10.5	MCDNV 1,5/4-G1-3,5 P14THR	19 52 99 5	
	5	14	MCDNV 1,5/5-G1-3,5 P14THR	19 53 00 4	
	6	17.5	MCDNV 1,5/6-G1-3,5 P14THR	19 53 04 6	
	7	21	MCDNV 1,5/7-G1-3,5 P14THR	19 53 05 9	
	8	24.5	MCDNV 1,5/8-G1-3,5 P14THR	19 53 06 2	
	9	28	MCDNV 1,5/9-G1-3,5 P14THR	19 53 07 5	
	10	31.5	MCDNV 1,5/10-G1-3,5 P14THR	19 53 08 8	
	11	35	MCDNV 1,5/11-G1-3,5 P14THR	19 53 10 1	
	12	38.5	MCDNV 1,5/12-G1-3,5 P14THR	19 53 11 4	
	13	42	MCDNV 1,5/13-G1-3,5 P14THR	19 53 12 7	
	14	45.5	MCDNV 1,5/14-G1-3,5 P14THR	19 53 13 0	
	15	49	MCDNV 1,5/15-G1-3,5 P14THR	19 53 14 3	
	16	52.5	MCDNV 1,5/16-G1-3,5 P14THR	19 53 15 6	
	17	56	MCDNV 1,5/17-G1-3,5 P14THR	19 53 16 9	
	18	59.5	MCDNV 1,5/18-G1-3,5 P14THR	19 53 17 2	
	19	63	MCDNV 1,5/19-G1-3,5 P14THR	19 53 18 5	
	20	66.5	MCDNV 1,5/20-G1-3,5 P14THR	19 53 19 8	

(1) **Coding profile**, is inserted into the groove on the plug after the reflow/assembly process, insulating material: red



(2) **Marker card**, with 14 pcs. 10-section marker strips, white, self-adhesive, for 140 terminal blocks

CP-MSTB	17 34 63 4	100
SK 3,5/2,8 (see COMBICON catalog)		

Technical data

Dimensions	
Pitch	[mm]
Hole diameter	[mm]
Pin dimensions	[mm]x[mm]

see description
3.5
≤ 8-pos. = 1.3 / > 8-pos. = 1.4
0.8 x 0.8

Technical data in accordance with IEC/ DIN VDE

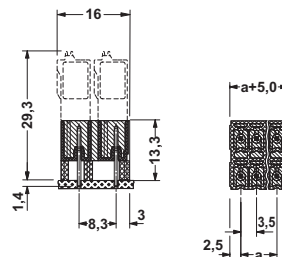
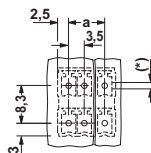
Insulating material group	-
Surge voltage category / contamination class	-/-
Rated voltage	[V]
Rated surge voltage	[kV]
Nominal current / cross section	[A]/[mm²]
Maximum load current / cross section	[A]/[mm²]

III / 3	IIIa	III / 2	II / 2
160	200	250	
2.5	2.5	2.5	
	6 / -		
	6 / -		

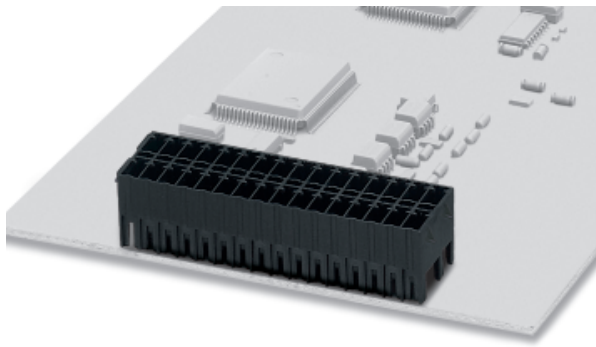
Insulating material

Inflammability class in acc. with UL 94

LCP
V0



MCDNV 1,5/...-G1-3,5 P26 THR 3.5 mm Pitch



Note:

COMBICON plug connectors may only be actuated in the no-load condition. If smaller loads need to be switched for operational reasons, experimental values are available on request.

Description	No. of pos.	Dim. a [mm]	Type	Order No.	Pcs./Pkt.
Double-level headers, plug-in direction vertical to the printed circuit board, 3.5 mm pitch, pin length: 2.6 mm, color: black,	2	3.5	MCDNV 1,5/2-G1-3,5 P26THR	19 52 78 8	50
	3	7	MCDNV 1,5/3-G1-3,5 P26THR	19 52 79 1	
	4	10.5	MCDNV 1,5/4-G1-3,5 P26THR	19 52 80 1	
	5	14	MCDNV 1,5/5-G1-3,5 P26THR	19 52 81 4	
	6	17.5	MCDNV 1,5/6-G1-3,5 P26THR	19 52 82 7	
	7	21	MCDNV 1,5/7-G1-3,5 P26THR	19 52 83 0	
	8	24.5	MCDNV 1,5/8-G1-3,5 P26THR	19 52 84 3	
	9	28	MCDNV 1,5/9-G1-3,5 P26THR	19 52 85 6	
	10	31.5	MCDNV 1,5/10-G1-3,5 P26THR	19 52 86 9	
	11	35	MCDNV 1,5/11-G1-3,5 P26THR	19 52 87 2	
	12	38.5	MCDNV 1,5/12-G1-3,5 P26THR	19 52 88 5	
	13	42	MCDNV 1,5/13-G1-3,5 P26THR	19 52 89 8	
	14	45.5	MCDNV 1,5/14-G1-3,5 P26THR	19 52 90 8	
	15	49	MCDNV 1,5/15-G1-3,5 P26THR	19 52 91 1	
	16	52.5	MCDNV 1,5/16-G1-3,5 P26THR	19 52 92 4	
	17	56	MCDNV 1,5/17-G1-3,5 P26THR	19 52 93 7	
	18	59.5	MCDNV 1,5/18-G1-3,5 P26THR	19 52 94 0	
	19	63	MCDNV 1,5/19-G1-3,5 P26THR	19 52 95 3	
	20	66.5	MCDNV 1,5/20-G1-3,5 P26THR	19 52 96 6	

(1) **Coding profile**, is inserted into the groove on the plug after the reflow/assembly process, insulating material: red

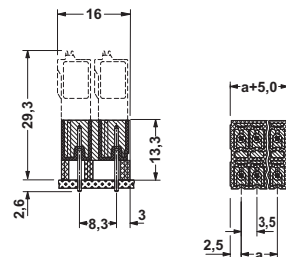
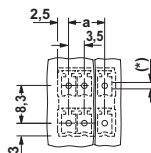


(2) **Marker card**, with 14 pcs. 10-section marker strips, white, self-adhesive, for 140 terminal blocks

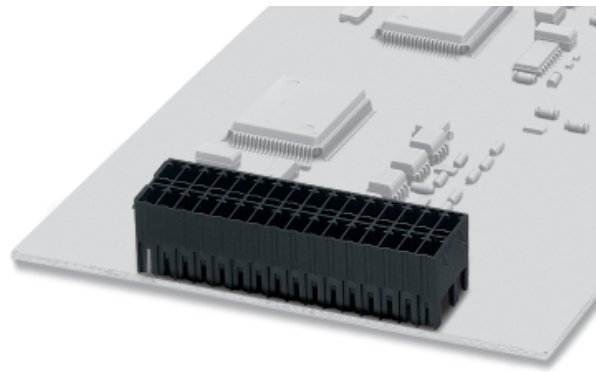
Technical data

Dimensions			
Pitch		[mm]	3.5
Hole diameter		[mm]	≤ 8-pos. = 1.3 / > 8-pos. = 1.4
Pin dimensions		[mm]x[mm]	0.8 x 0.8
Technical data in accordance with IEC/ DIN VDE			
Insulating material group		-	IIIa
Surge voltage category / contamination class		-/-	III / 2
Rated voltage		[V]	160
Rated surge voltage		[kV]	2.5
Nominal current / cross section		[A]/[mm²]	6 / -
Maximum load current / cross section		[A]/[mm²]	6 / -
Insulating material			
Inflammability class in acc. with UL 94			LCP V0

CP-MSTB	17 34 63 4	100
SK 3,5/2,8 (see COMBICON catalog)		



MCDNV 1,5/...-G1-3,5 RNP14 THR 3.5 mm Pitch



Note:

COMBICON plug connectors may only be actuated in the no-load condition. If smaller loads need to be switched for operational reasons, experimental values are available on request.

Description	No. of pos.	Dim. a [mm]	Type	Order No.	Pcs./Pkt.
Double-level headers, plug-in direction vertical to the printed circuit board, 3.5 mm pitch, with engagement latch, pin length: 1.4 mm, color: black,	2	3.5	MCDNV 1,5/2-G1-3,5 RNP14THR	19 52 50 0	50
	3	7	MCDNV 1,5/3-G1-3,5 RNP14THR	19 52 51 3	
	4	10.5	MCDNV 1,5/4-G1-3,5 RNP14THR	19 52 52 6	
	5	14	MCDNV 1,5/5-G1-3,5 RNP14THR	19 52 53 9	
	6	17.5	MCDNV 1,5/6-G1-3,5 RNP14THR	19 52 54 2	
	7	21	MCDNV 1,5/7-G1-3,5 RNP14THR	19 52 55 5	
	8	24.5	MCDNV 1,5/8-G1-3,5 RNP14THR	19 52 56 8	
	9	28	MCDNV 1,5/9-G1-3,5 RNP14THR	19 52 57 1	
	10	31.5	MCDNV 1,5/10-G1-3,5 RNP14THR	19 52 58 4	
	11	35	MCDNV 1,5/11-G1-3,5 RNP14THR	19 52 59 7	
	12	38.5	MCDNV 1,5/12-G1-3,5 RNP14THR	19 52 60 0	
	13	42	MCDNV 1,5/13-G1-3,5 RNP14THR	19 52 61 3	
	14	45.5	MCDNV 1,5/14-G1-3,5 RNP14THR	19 52 62 6	
	15	49	MCDNV 1,5/15-G1-3,5 RNP14THR	19 52 63 9	
	16	52.5	MCDNV 1,5/16-G1-3,5 RNP14THR	19 52 65 2	
	17	56	MCDNV 1,5/17-G1-3,5 RNP14THR	19 52 66 5	
	18	59.5	MCDNV 1,5/18-G1-3,5 RNP14THR	19 52 67 8	
	19	63	MCDNV 1,5/19-G1-3,5 RNP14THR	19 52 68 1	
	20	66.5	MCDNV 1,5/20-G1-3,5 RNP14THR	19 52 68 1	

(1) **Coding profile**, is inserted into the groove on the plug after the reflow/assembly process, insulating material: red

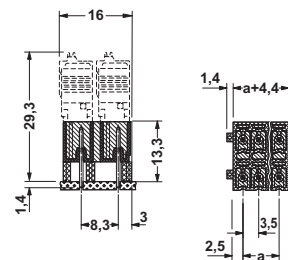
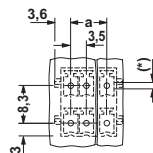


(2) **Marker card**, with 14 pcs. 10-section marker strips, white, self-adhesive, for 140 terminal blocks

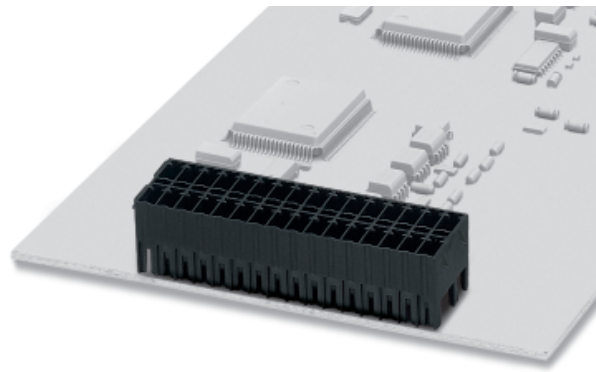
CP-MSTB	17 34 63 4	100
SK 3,5/2,8 (see COMBICON catalog)		

Technical data

Dimensions		
Pitch	[mm]	3.5
Hole diameter	[mm]	≤ 8-pos. = 1.3 / > 8-pos. = 1.4
Pin dimensions	[mm]x[mm]	0.8 x 0.8
Technical data in accordance with IEC/ DIN VDE		
Insulating material group	-	IIIa
Surge voltage category / contamination class	-/-	III / 3 III / 2 II / 2
Rated voltage	[V]	160 200 250
Rated surge voltage	[kV]	2.5 2.5 2.5
Nominal current / cross section	[A]/[mm²]	6 / -
Maximum load current / cross section	[A]/[mm²]	6 / -
Insulating material		LCP
Inflammability class in acc. with UL 94		V0



MCDNV 1,5/...-G1-3,5 RNP26 THR 3.5 mm Pitch



Note:

COMBICON plug connectors may only be actuated in the no-load condition. If smaller loads need to be switched for operational reasons, experimental values are available on request.

Description	No. of pos.	Dim. a [mm]	Type	Order No.	Pcs./Pkt.
Double-level headers, plug-in direction vertical to the printed circuit board, 3.5 mm pitch, with engagement latch, pin length: 2.6 mm, color: black,	2	3.5	MCDNV 1,5/2-G1-3,5 RNP26THR	19 52 45 8	50
	3	7	MCDNV 1,5/3-G1-3,5 RNP26THR	19 52 46 1	
	4	10.5	MCDNV 1,5/4-G1-3,5 RNP26THR	19 52 47 4	
	5	14	MCDNV 1,5/5-G1-3,5 RNP26THR	19 52 48 7	
	6	17.5	MCDNV 1,5/6-G1-3,5 RNP26THR	19 52 49 0	
	7	21	MCDNV 1,5/7-G1-3,5 RNP26THR	19 52 21 2	
	8	24.5	MCDNV 1,5/8-G1-3,5 RNP26THR	19 52 22 5	
	9	28	MCDNV 1,5/9-G1-3,5 RNP26THR	19 52 23 8	
	10	31.5	MCDNV 1,5/10-G1-3,5 RNP26THR	19 52 24 1	
	11	35	MCDNV 1,5/11-G1-3,5 RNP26THR	19 52 25 4	
	12	38.5	MCDNV 1,5/12-G1-3,5 RNP26THR	19 52 69 4	
	13	42	MCDNV 1,5/13-G1-3,5 RNP26THR	19 52 70 4	
	14	45.5	MCDNV 1,5/14-G1-3,5 RNP26THR	19 52 71 7	
	15	49	MCDNV 1,5/15-G1-3,5 RNP26THR	19 52 72 0	
	16	52.5	MCDNV 1,5/16-G1-3,5 RNP26THR	19 52 73 3	
	17	56	MCDNV 1,5/17-G1-3,5 RNP26THR	19 52 74 6	
	18	59.5	MCDNV 1,5/18-G1-3,5 RNP26THR	19 52 75 9	
	19	63	MCDNV 1,5/19-G1-3,5 RNP26THR	19 52 76 2	
	20	66.5	MCDNV 1,5/20-G1-3,5 RNP26THR	19 52 77 5	

(1) **Coding profile**, is inserted into the groove on the plug after the reflow/assembly process, insulating material: red



(2) **Marker card**, with 14 pcs. 10-section marker strips, white, self-adhesive, for 140 terminal blocks

CP-MSTB	17 34 63 4	100
SK 3,5/2,8 (see COMBICON catalog)		

Technical data

Dimensions	
Pitch	[mm] 3.5
Hole diameter	[mm] 1.3 / 1.4
Pin dimensions	[mm]x[mm] 0.8 x 0.8

Technical data in accordance with IEC/ DIN VDE

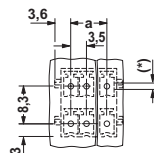
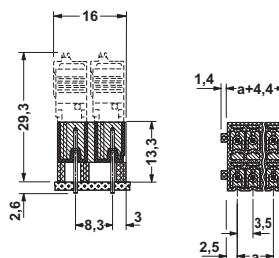
Insulating material group	-
Surge voltage category / contamination class	-/-
Rated voltage	[V] 160 / 200 / 250
Rated surge voltage	[kV] 2.5
Nominal current / cross section	[A]/[mm²] 6 / -
Maximum load current / cross section	[A]/[mm²] 6 / -

Insulating material

Inflammability class in acc. with UL 94

see description

3.5
≤ 8-pos. = 1.3 / > 8-pos. = 1.4
0.8 x 0.8



http://www.phoenixcontact.com

© Phoenix Contact 15.11.02 TNR: 5127580-02