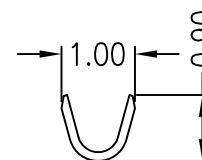
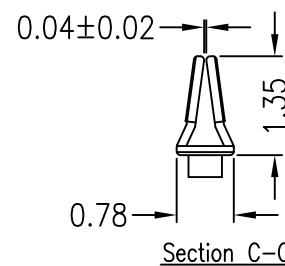


Section A-A



Section B-B



Section C-C

## SPECIFICATIONS:

MATERIAL:-  
PHOSPHOR BRONZEFINISH:-  
TIN PLATING

ELECTRICAL:-

CURRENT RATING: 1A AC/DC

VOLTAGE RATING: 50V AC/DC

WITHSTAND VOLTAGE: 500V AC/MINUTE

CONTACT RESISTANCE: 20mΩ MAX.

INSULATION RESISTANCE: 100 MΩ MIN.

ENVIRONMENTAL:-

TEMPERATURE RANGE: -25°C TO +85°C

## NOTES:

1. APPLICABLE WIRE: AWG#28-#32 INSULATION O.D.: 0.75mm MAX.
2. RECOMMENDED WIRE STRIP LENGTH= 1.3-1.5mm.
3. TO BE USED WITH HOUSING M40-110 & M40-120 XX 00.
4. ALL DIMENSIONS AND NOTES MARKED \* ARE CRITICAL AND MUST BE CHECKED IN ACCORDANCE WITH QUALITY DOC. QI-02A

Leo	4	28.10.15	A472
Leo	3	08.06.15	A464
Allan	2	05.11.07	A090
Allan	1	01.08.06	--

NAME	ISS.	DATE	C/NOTE
------	------	------	--------

APPROVED: B.Lim

CHECKED: D.P

DRAWN: Leo

CUSTOMER REF.:

ASSEMBLY DRG:

# HARWIN

HARWIN USA  
TEL: 603 893 5376  
FAX: 603 893 5396  
mis@harwin.com

HARWIN Europe (UK)  
TEL: 023 9231 4545  
FAX: 023 9231 4590  
mis@harwin.co.uk

HARWIN Asia  
TEL: +65 6 779 4909  
FAX: +65 6 779 3868  
mis@harwin.com.sg

THIS DRAWING AND ANY INFORMATION OR DESCRIPTIVE MATTER SET OUT HEREON ARE CONFIDENTIAL AND COPYRIGHT PROPERTY OF THE HARWIN GROUP AND MUST NOT BE DISCLOSED, LOANED, COPIED OR USED FOR MANUFACTURING, TENDERING OR FOR ANY OTHER PURPOSE WITHOUT THEIR WRITTEN PERMISSION.

## TOLERANCES

X.X = ±0.25mm  
X.XX = ±0.15mm

ANGLES = ±3°  
UNLESS STATED

## MATERIAL:

SEE NOTES

## FINISH:

SEE NOTES

## S/AREA:

mm?

## TITLE:

1.00mm PITCH WIRE TO  
BOARD CRIMP TERMINAL

## DRAWING NUMBER:

M40-1000046

SHT  
1  
OF  
1