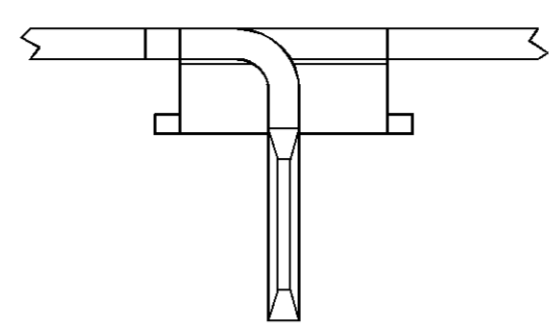
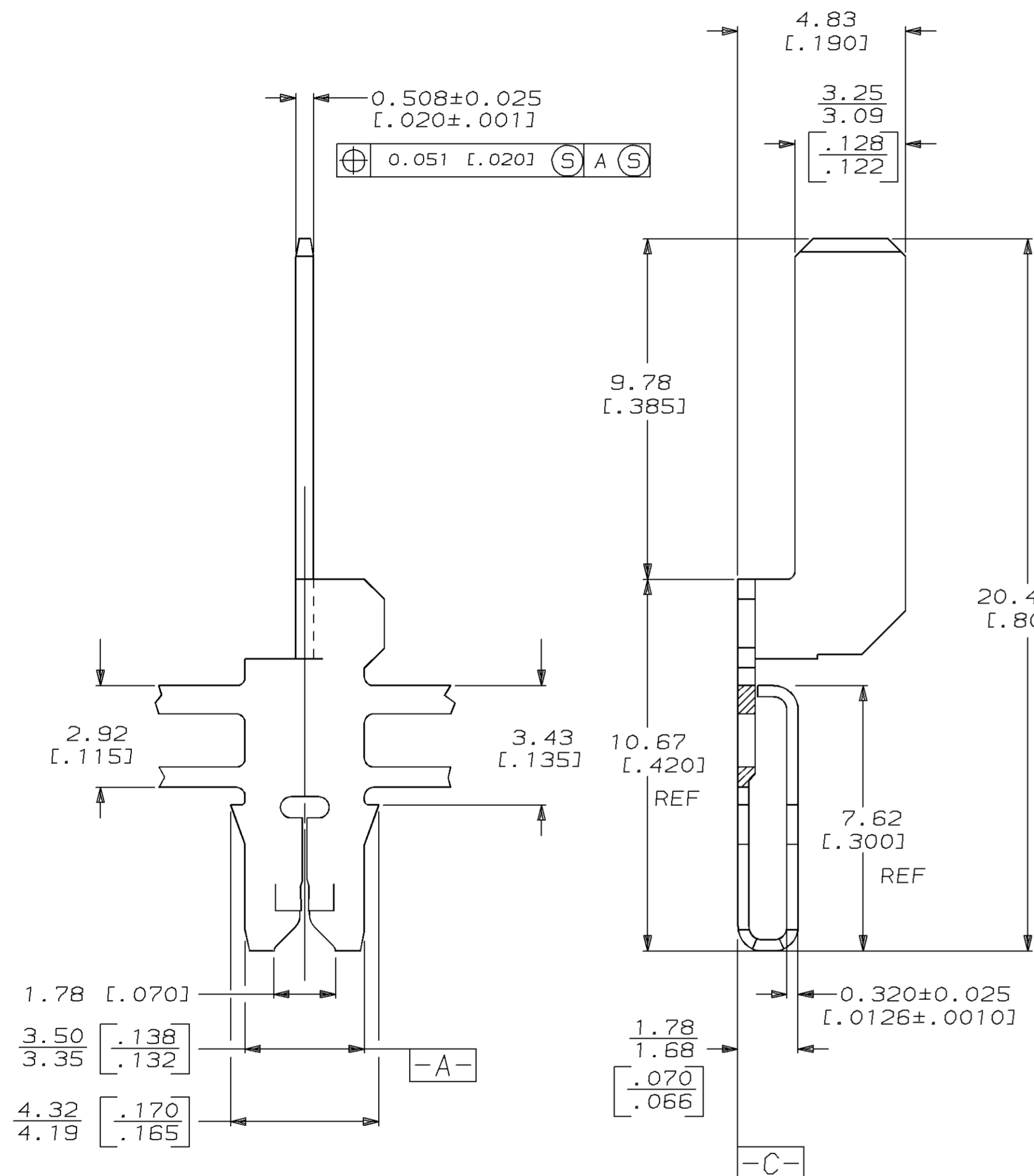
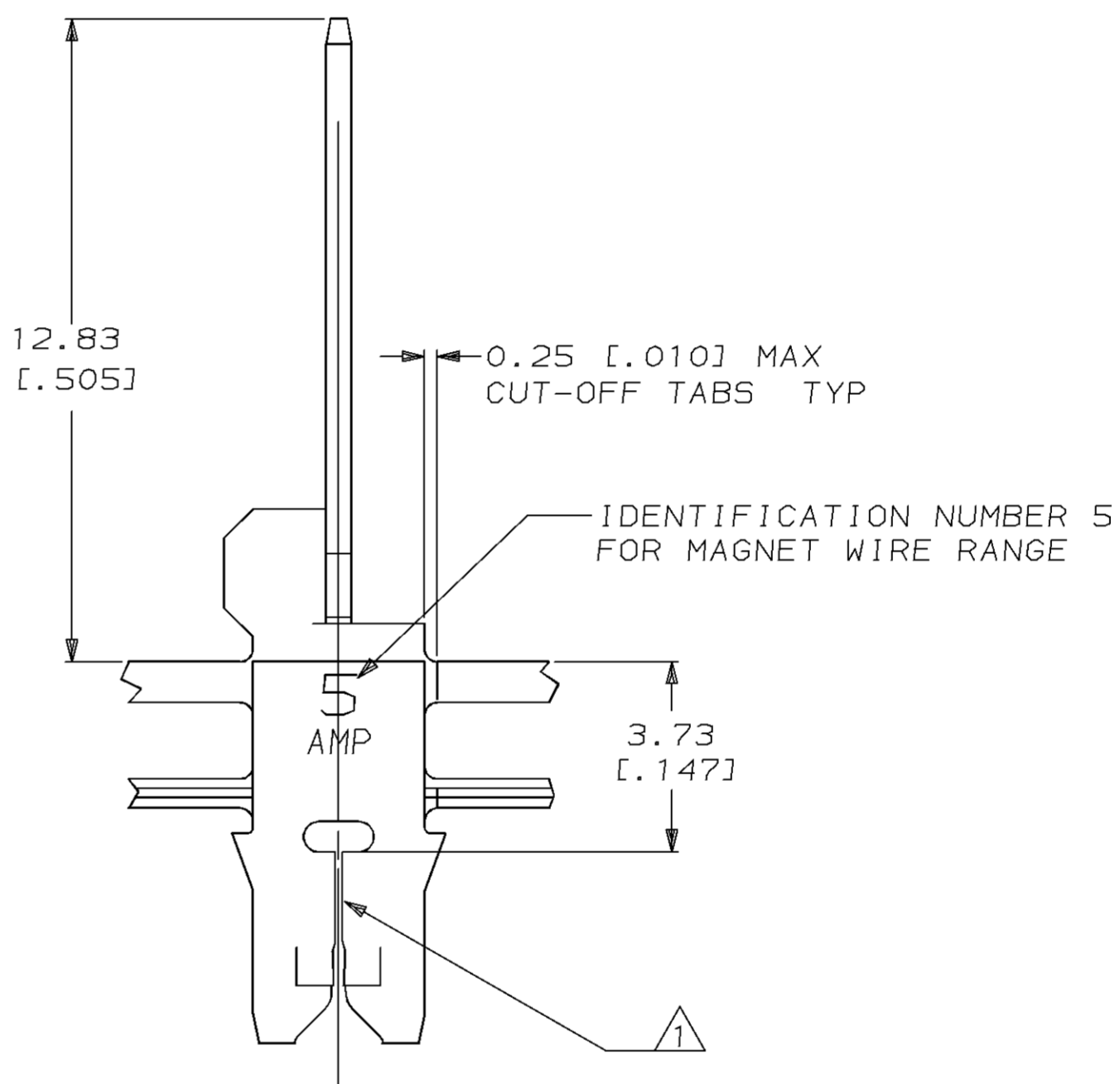


LOC		DIST		P		F		ZONE		LTR		REVISIONS		DATE	APPD
AF		50								C		REV PER 0710-0522-95		11DEC95	RG/NN



- 1 SLOT TERMINATES 0.23-0.32mm [#31-#28] AWG COPPER MAGNET WIRE EITHER SINGLE OR DOUBLE OF THE SAME SIZE.
- 2 CONTINUOUS STRIP ON REELS WITH TERMINALS LOCATED ON 8.38 ± 0.08 [.330 ± .003] CENTERS.



63807-1
PART NO

DO NOT SCALE PRINT. UNLESS SPECIFIED DIMENSIONS IN mm [INCHES] TOLERANCES ON: 2 PLC DEC ± 0.25 [.010] 3 PLC DEC ± - ANGLES ± -		DR 19/SEP/94 MICHAEL S. FEHER		AMP Incorporated Harrisburg, PA 17105-3608	
MATERIAL #4M PRE-MILLED BRASS		CHK 21/SEP/94 JEFF R. RUTH			
FINISH 0.002032 [.000080] MIN TIN PER MIL-T-10727		APPD 21/SEP/94 NELSON E. NEFF		NAME TERMINAL, TAB, 3.18 [.125], MAG-MATE™	
THIS DRAWING IS A CONTROLLED DOCUMENT FOR AMP INCORPORATED. IT IS SUBJECT TO CHANGE AND THE CONTROLLING ENGINEERING ORGANIZATION SHOULD BE CONTACTED FOR THE LATEST REVISION.		APPD 21/SEP/94 TERRY L. SHUTTER		DRAWING NO G=63807	
		PRODUCT SPEC 108-2012		SIZE C 00779	
		APPLICATION SPEC 114-2046		CAGE CODE 00779	
		WEIGHT -		DRAWING NO G=63807	
				SCALE 8:1	
				SHEET 1 OF 1	