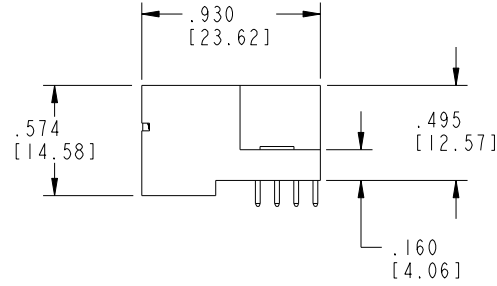
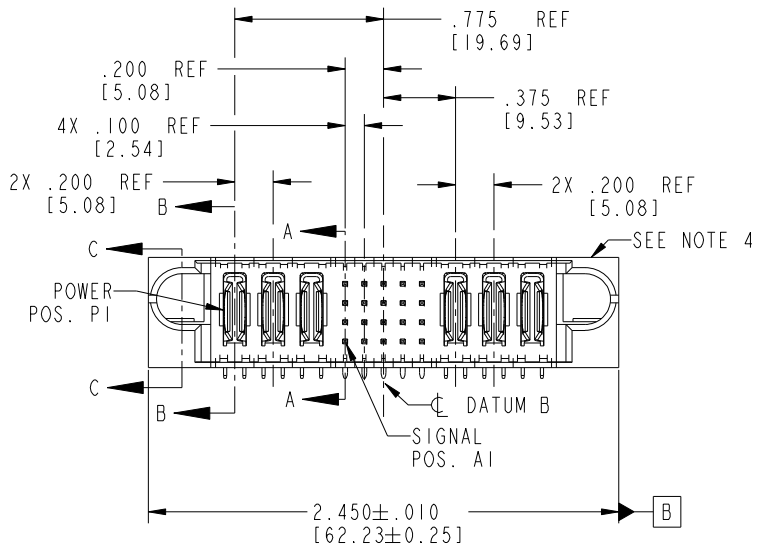
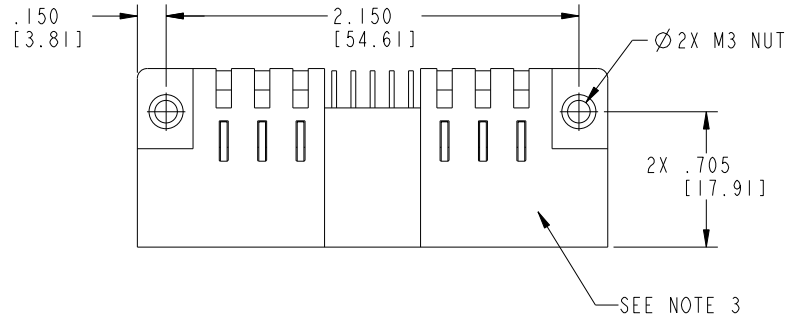


Tous droits strictement réservés. Reproduction ou communication a des tiers interdite sous quelque forme que ce soit sans autorisation écrite du propriétaire. Propriété de c FCI. Droits de reproduction FCI.

All rights strictly reserved. Reproduction or issue to third parties in any form whatever is not permitted without written authority from the proprietor. Property of FCI. Copyright FCI.



PRODUCT NO.	ROWS	POWER			SIG					POWER			E2	
		E1	P1	P2	P3	1	2	3	4	5	P4	P5		P6
51907-002-- NOTE: 3	D C B A													



CODE	DIM "M" MATING LENGTH	CONTACT TYPE
E	.220 [5.59]	SIGNAL
R	.270 [6.86]	SIGNAL
S	.270 [6.86]	SIGNAL
T	.270 [6.86]	SIGNAL
U	.270 [6.86]	SIGNAL
PA	N/A [N/A]	POWER

mat'l code				SEE NOTE 2		tolerances unless otherwise specified		CUSTOMER		 www.fciconnect.com	
ltr	ecn no.	dr	date	linear	.XX±.01/0.X±0.3	projection		title 3P + 20S + 3P			
A	V03-0295	TAB	03/11/03		.XXX±.005/0.XX±0.13			RIGHT ANGLE SOLDER HEADER			
B	DG05-0353	CS	09/23/05	angles	.XXX±.0020/0.XXX±0.051			product family PwrBlade		code 213	
C	DG06-0005	JMG	01/06/06		0°±2°	INCH/MM		size dwg no		sheet 1 of 4	
D	DG08-0272	WD	09/28/08	dr		scale 1:1		A 51907-002			
sheet index		revision sheet		D	D	D	D				
		1 2		3	4						

1 | 2

Pro/E

PDM: Rev: D

STATUS: Released

Printed: Dec 20, 2010

3 |

4

A

A

B

B

cage code 28536

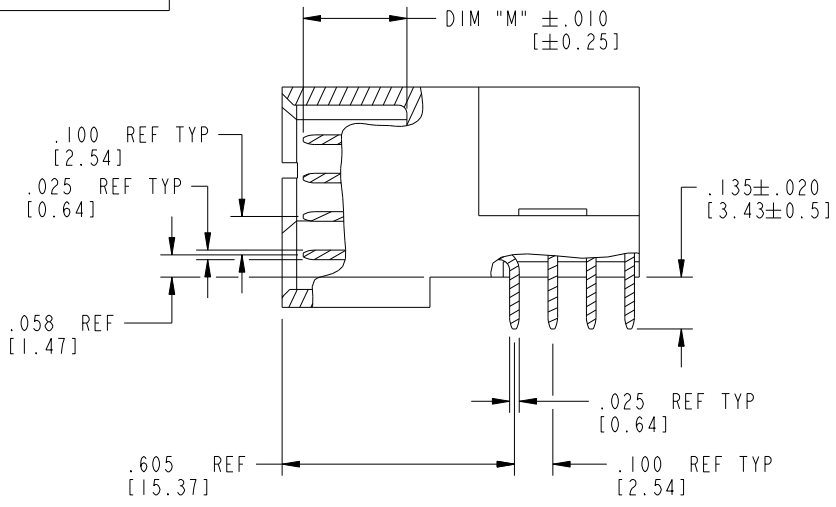
4

Tous droits strictement réservés. Reproduction ou communication a des tiers interdite sous quelque forme que ce soit sans autorisation écrite du propriétaire. Propriété de c FCI. Droits de reproduction FCI.

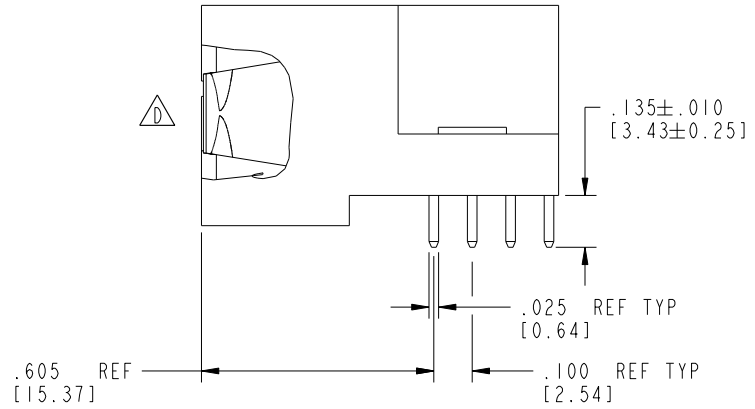
All rights strictly reserved. Reproduction or issue to third parties in any form whatever is not permitted without written authority from the proprietor. Property of FCI. Copyright FCI.



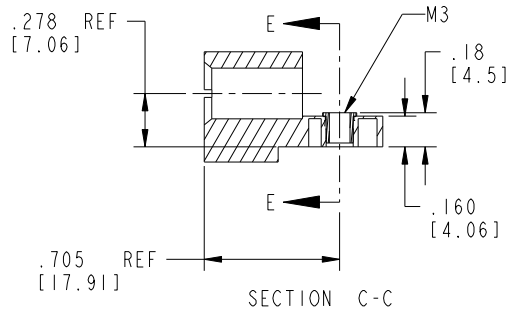
PRODUCT NUMBER
51907-002--
NOTE: 3



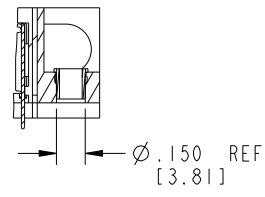
BROKEN-OUT SECTION A-A
SCALE 2:1



BROKEN-OUT SECTION B-B
SCALE 2:1



SECTION C-C



PARTIAL SECTION E-E

mat'l code		SEE NOTE 2		tolerances unless otherwise specified		CUSTOMER		FCI	
lir	ecn no.	dr	date	linear	.XX±.01/0.X±0.3	COPY		www.fciconnect.com	
D				linear	.XXX±.005/0.XX±0.13	projection		title 3P + 20S + 3P	
				angles	.XXX±.0020/0.XXX±0.051	⊕ ↗		RIGHT ANGLE SOLDER HEADER	
				dr	0° ± 2°	INCH/MM		product family PwrBlade	
				enrg	T. BRUNGARD 03/11/03	scale		code 213	
				chr	M. MOSTOLLER 03/11/03	1:1		size dwg no	
				appd	M. MOSTOLLER 03/11/03	A		51907-002	
sheet index	revision sheet							sheet 2 of 4	

Pro/E

PDM: Rev: D

STATUS: Released

Printed: Dec 20, 2010

1 | 2

3 |

4

A

A

B

B

1 | 2

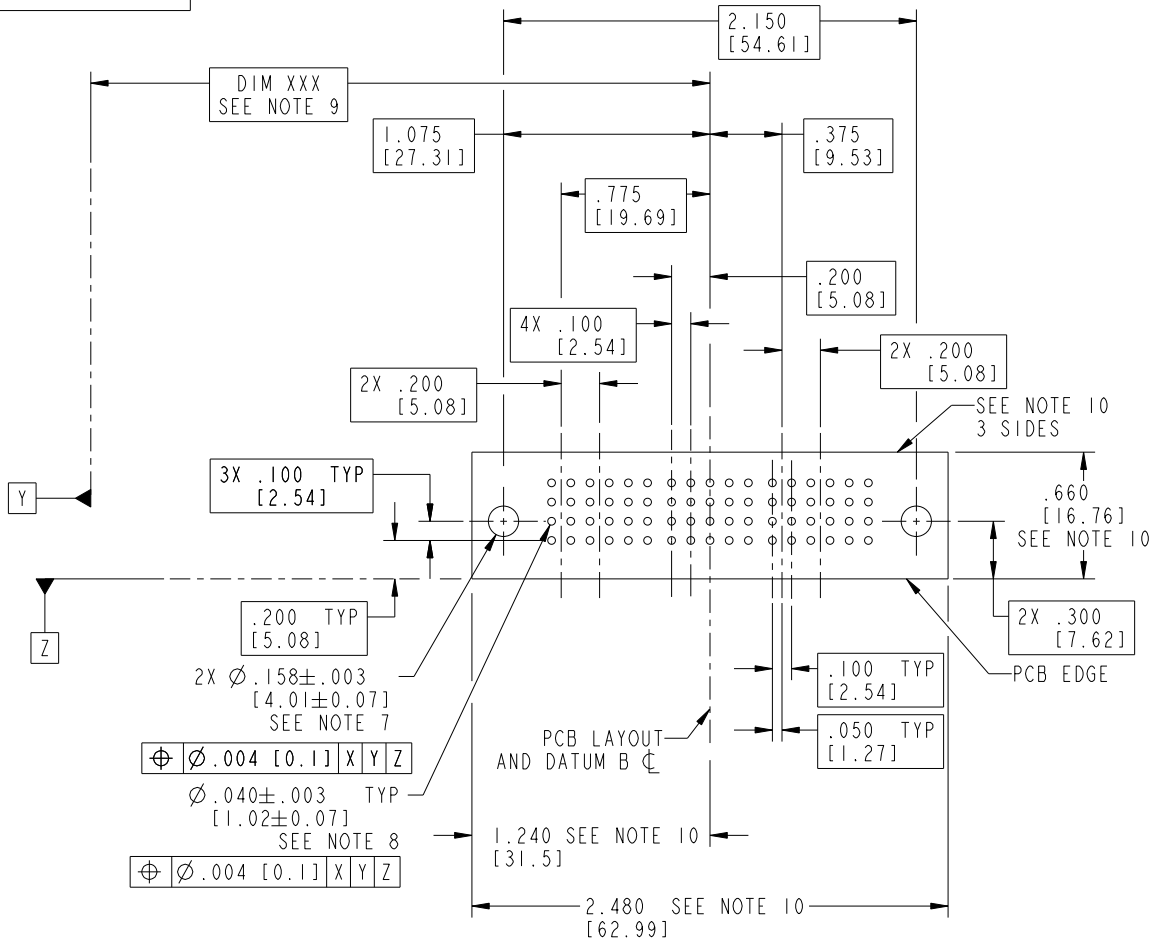
4

Tous droits strictement réservés. Reproduction ou communication a des tiers interdite sous quelque forme que ce soit sans autorisation écrite du propriétaire. Propriété de c FCI. Droits de reproduction FCI.

All rights strictly reserved. Reproduction or issue to third parties in any form whatever is not permitted without written authority from the proprietor. Property of FCI. Copyright FCI.



PRODUCT NUMBER
51907-002--
NOTE: 3



RECOMMENDED PCB LAYOUT

mat'l code		SEE NOTE 2		tolerances unless otherwise specified		CUSTOMER		 www.fciconnect.com	
ltr	ecn no.	dr	date	linear	.XX±.01/0.X±0.3	COPY		title 3P + 20S + 3P	
D				angles	.XXX±.005/0.XX±0.13	projection		RIGHT ANGLE SOLDER HEADER	
					.XXX±.0020/0.XXX±0.051			product family PwrBlade code 213	
				dr	0°±2°			size dwg no 51907-002 sheet 3 of 4	
				enr	T. BRUNGARD 03/11/03	scale 1:1			
				enr	M. MOSTOLLER 03/11/03				
				chr	M. MOSTOLLER 03/11/03				
				appd	M. MOSTOLLER 03/11/03				
sheet index	revision sheet								

cage code 22526

Pro/E

PDM: Rev: D

STATUS: Released

Printed: Dec 20, 2010

PRODUCT NUMBER
 51907-002__
 NOTE: 3

NOTES:

1. DIMENSIONS AND TOLERANCES ARE IN ACCORDANCE WITH ASME Y14.5M, 1994 UNLESS OTHERWISE SPECIFIED.

CONNECTOR NOTES:

- 2. HOUSING MATERIAL: UL 94 V-0 GLASS FILLED HIGH-TEMP THERMOPLASTIC
 POWER CONTACT MATERIAL: COPPER ALLOY
 SIGNAL PIN MATERIAL: COPPER ALLOY

3. SEE ITEM 1 & 2 IN PRINT 10064183 FOR PLATING SPEC OF 51907-002 AND 51907-002LF RESPECTIVELY.

4. MANUFACTURER'S NAME, P/N, AND DATE CODE TO APPEAR ON THIS SURFACE.

5. PRODUCT SPECIFICATION GS-12-149.
APPLICATION SPECIFICATION BUS-20-067.

PCB NOTES:

- 6. ALL HOLE DIAMETERS ARE FINISHED HOLE SIZE.
- 7. MOUNTING HOLES, WHERE APPLICABLE, ARE UNPLATED.

8. $\varnothing .0453 \pm .0010$ [1.151 \pm 0.025] DRILLED HOLES PLATED WITH .0003 [0.008] MIN SnPb OVER .001 [0.03] TO .003 [0.08] Cu PLATING TO ACHIEVE $\varnothing .040 \pm .003$ [1.02 \pm .07] HOLE.

9. "DIM XXX" TO BE DETERMINED BY THE CUSTOMER.

10. CONNECTOR KEEP-OUT ZONE.

11. A Δ SYMBOL WILL BE NEXT TO ANY DIMENSION, VIEW, OR NOTE WHICH HAS BEEN MODIFIED WITH THE CURRENT DRAWING REVISION.

mat'l code				SEE NOTE 2		tolerances unless otherwise specified		CUSTOMER		FCJ	
ltr	ecn no.	dr	date	linear	.XX \pm .01 / 0.X \pm 0.3	projection	COPY		www.fciconnect.com		
D					.XXX \pm .005 / 0.XX \pm 0.13		title		3P + 20S + 3P		
				angles	.XXX \pm .0020 / 0.XXX \pm 0.051		RIGHT ANGLE SOLDER HEADER				
				dr	T. BRUNGARD 03/11/03		product family		PwrBlade		code
				engr	M. MOSTOLLER 03/11/03		size		dwg no		213
				chr	M. MOSTOLLER 03/11/03		scale		A 51907-002		sheet
				appd	M. MOSTOLLER 03/11/03		1:1				4 of 4
sheet index		revision sheet									

Tous droits strictement réservés. Reproduction ou communication a des tiers interdite sous quelque forme que ce soit sans autorisation écrite du propriétaire. Propriété de c FCI. Droits de reproduction FCI.



All rights strictly reserved. Reproduction or issue to third parties in any form whatever is not permitted without written authority from the proprietor. Property of FCI. Copyright FCI.