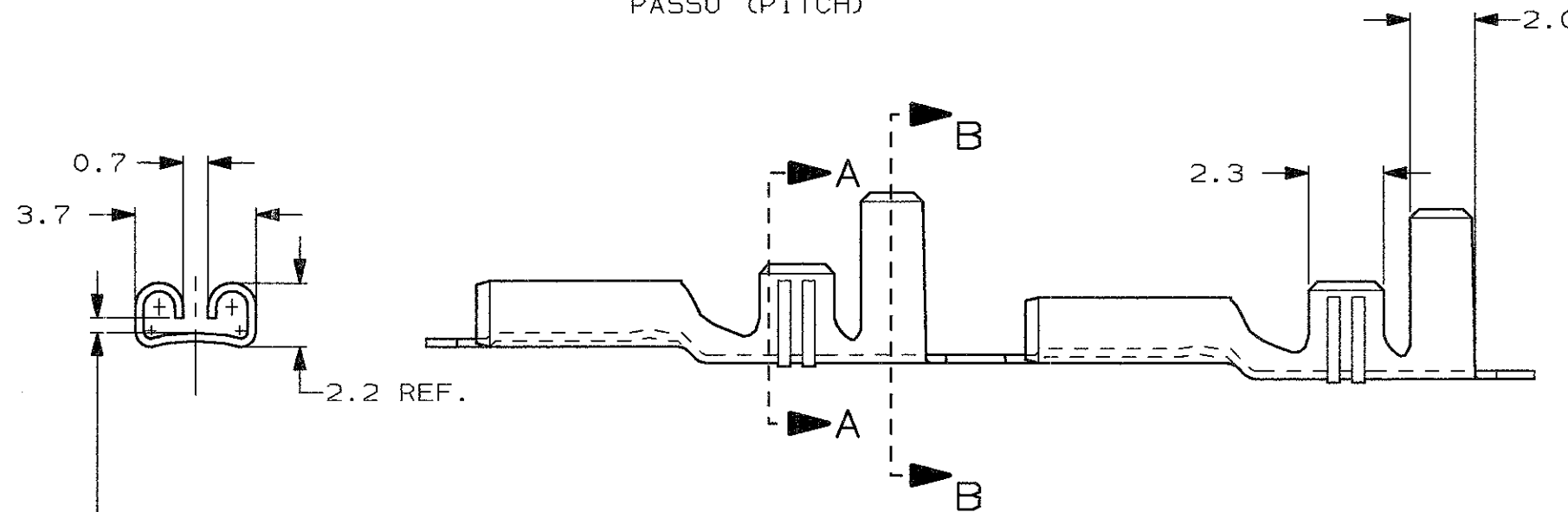
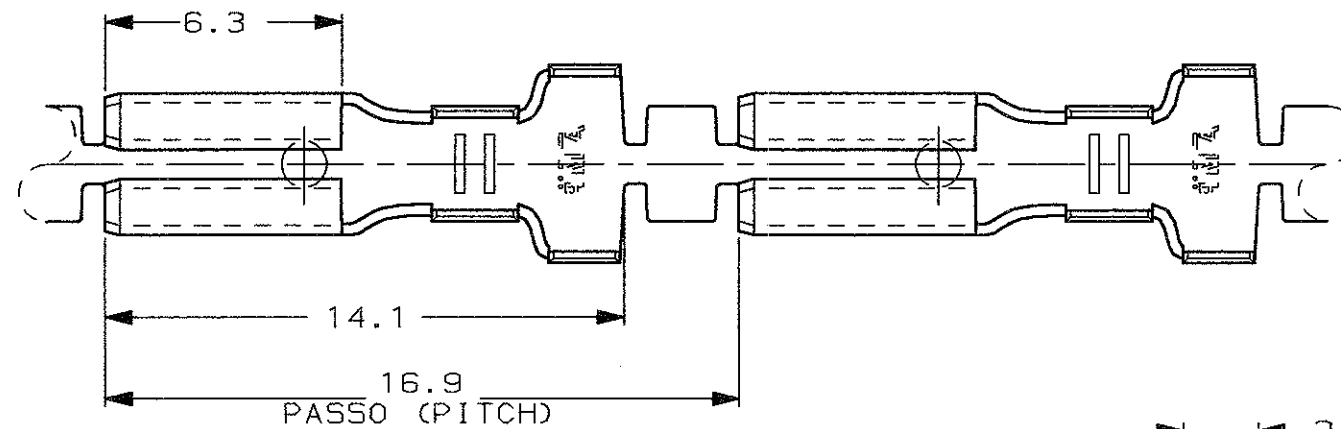


SCALA NON IMPEGNATIVA
(DO NOT SCALE)
DIMENSIONI IN
(DIMENSIONS IN) mm

METRIC

THIRD ANGLE
PROJECTION



ADATTO PER LINGUETTA
DI 0.8 mm.
(TO FIT TAB 0.8 mm.)

1) STATO DI FORNITURA - SCALA 1:1
(SUPPLY CONDITION - SCALE 1:1)

16.9
PITCH



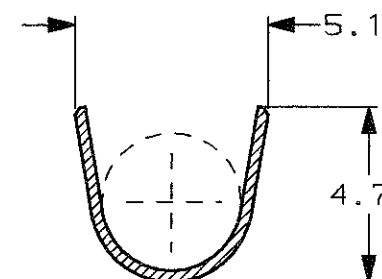
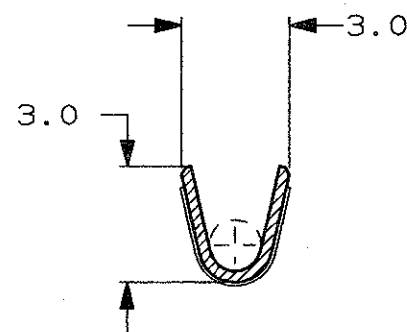
SENSO DI USCITA
DEL TERMINALE
DALLA BOBINA
(DIRECTION OFF
TOP OF REEL)

2) SPECIFICA DI PRODOTTO 108-20019
(PRODUCT SPEC. 108-20019)

3) PER LE VERSIONI IN PEZZI SCIOLTI
VEDERE DISEGNO 181551
(FOR LOOSE PIECE VERSION SEE DRAWING 181551).

SEZIONE A-A
(SECTION A-A)

SEZIONE B-B
(SECTION B-B)



| | | | | |
|------|--|-------------------------|---------------------|------|
| | STAGNATO (TIN PLATED) | OTTONE (BRASS) | 180457-2 | AH |
| NOTE | FINITURA / COLORE (FINISH / COLOUR) | MATERIALE (MATERIAL) | NUMERO (AMP P/N) | REV. |

CUSTOMER DWG. FOR REFERENCE ONLY DISEGNO PER CLIENTE SOLO PER RIFERIMENTO

THIS DRAWING IS UNPUBLISHED RELEASE FOR PUBLICATION 19

© COPYRIGHT 19 BY AMP INCORPORATED, HARRISBURG, PA. ALL INTERNATIONAL RIGHT RESERVED. AMP PRODUCTS MAY BE COVERED BY U.S. AND FOREIGN PATENT AND/OR PATENT PENDING

| | | | |
|---|-------------------------------------|--|------------------|
| TOLLERANZE: SE NON DIVERSAMENTE SPECIFICATO (TOLERANCES: UNLESS OTHERWISE SPECIFIED) | DIAM. ISOLANTE (INS. DIA. RANGE) | RANGO FILO (WIRE RANGE) mm ² | SCALA (SCALE) |
| ±0.4 | 1.5-3.6 | 0.5-1.5 | 5:1 |

ANGOLI (ANGLES) ± 2°

DIS. H. YAALI (DR.) 18 DEC 2000

DESCRIZIONE (DESCRIPTION) FASTON® Connector .110" sr. REC. CONTACT

| | | | | |
|------------------------|-----------|-----------------|------|----------------|
| CONT. C. TARTARI (CHK) | LOC. SIZE | NUMERO (DWG NO) | REV. | FOGLIO (SHEET) |
| | I A3 | C-180457 | AH 1 | DI 1 (OF) 1 |

| | | | |
|------|--|------|------------------|
| REV. | REVISIONI (REVISION RECORD) | H.Y. | DESIGN (DATE) |
| AH | OBSOLETE PARTS & REDRAWN ET00-0307-98 | | |

DISTRIBUZIONE
(PRINT DIST.)