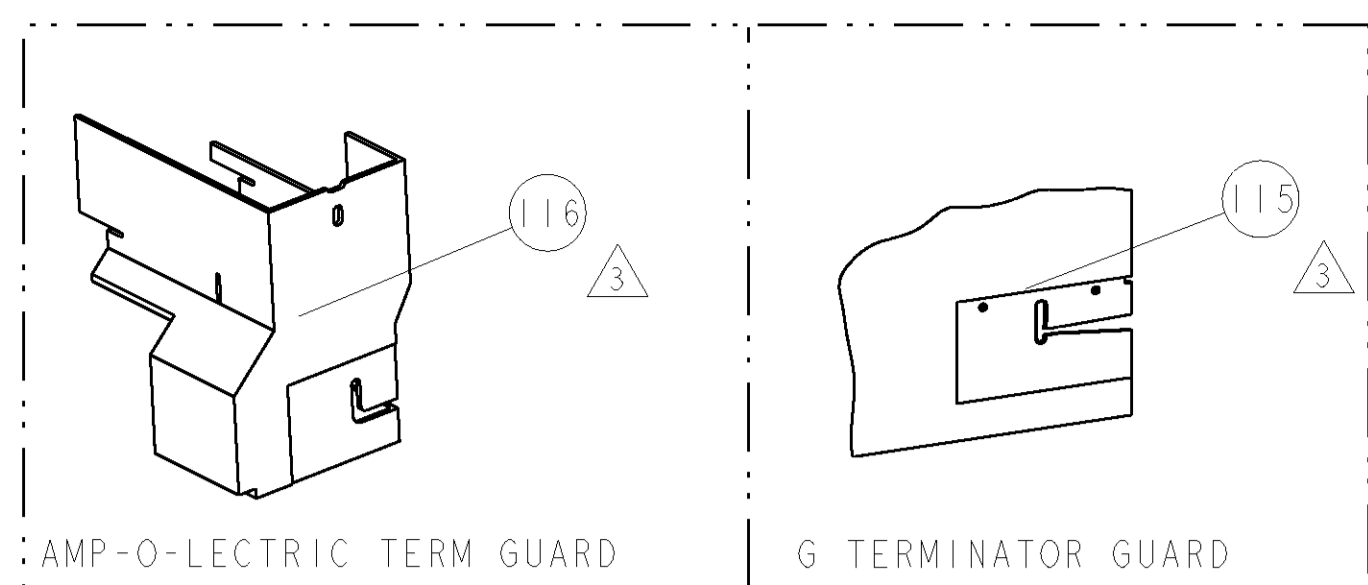


| PART NUMBER | REV | FIRST USED | POWER UNIT | FEED TYPE | DESCRIPTION |
|-------------|-----|------------|---------------|-----------|--------------------|
| 1855366-1 | A | 122500-1 | LEADMAKER | POST FEED | CUTS CARRIER |
| 1855366-2 | B | 565435-5 | BENCH MODEL K | PRE FEED | CUTS CARRIER |
| 1855366-3 | B | 354500-1 | BENCH MODEL G | PRE FEED | CUTS CARRIER |
| 1855366-6 | A | 122500-1 | LEADMAKER | POST FEED | CONTINUOUS CARRIER |
| 7-1855366-7 | A | - | - | - | SPARE PARTS |

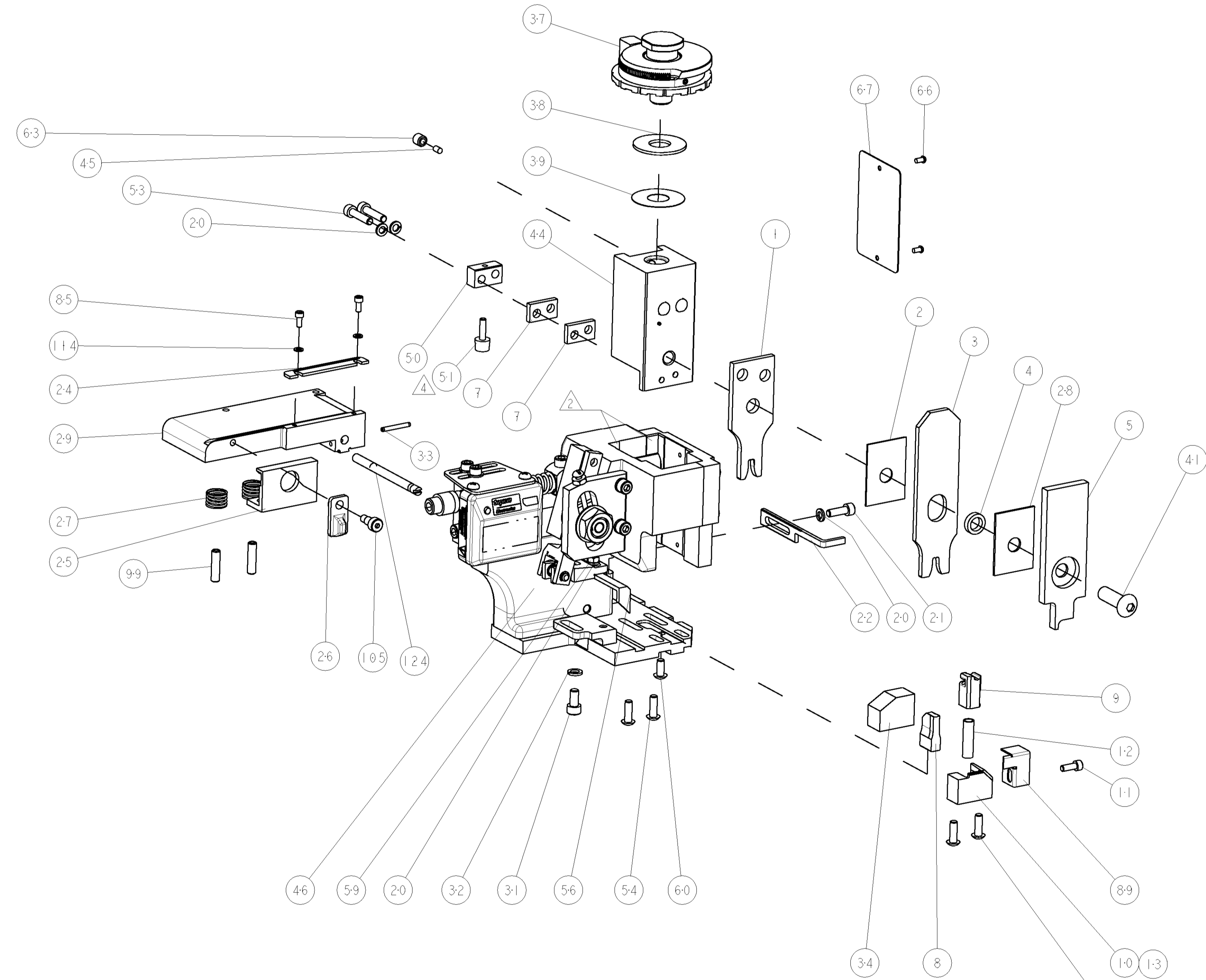


| TE PN | | COMP PN | GHW/LEAR TERMINAL - TE CRIMP SPECS | | REF SETTING |
|-------------------|---------------|----------------|------------------------------------|---|-------------|
| 1949608-1 | 26407.212.179 | | CRIMP HEIGHT | WIRE SIZE | |
| - | - | | 2.08±0.05mm [.082±.002] | 16AWG or 1.25mm ² CAPILLARY WIRE | C4 |
| - | - | | CRIMP | SIZE | TYPE |
| - | - | | WIRE | 3.81mm [.150] | F |
| - | - | | INSUL | 4.32mm [.170] | F |
| WIRE STRIP LENGTH | | TERM APPL SPEC | FEED | APPLICATOR INSTRUCTIONS | SET UP GAGE |
| 4.93-5.31 | | NONE | 19.05mm | 408-8040 | 458637-1 |

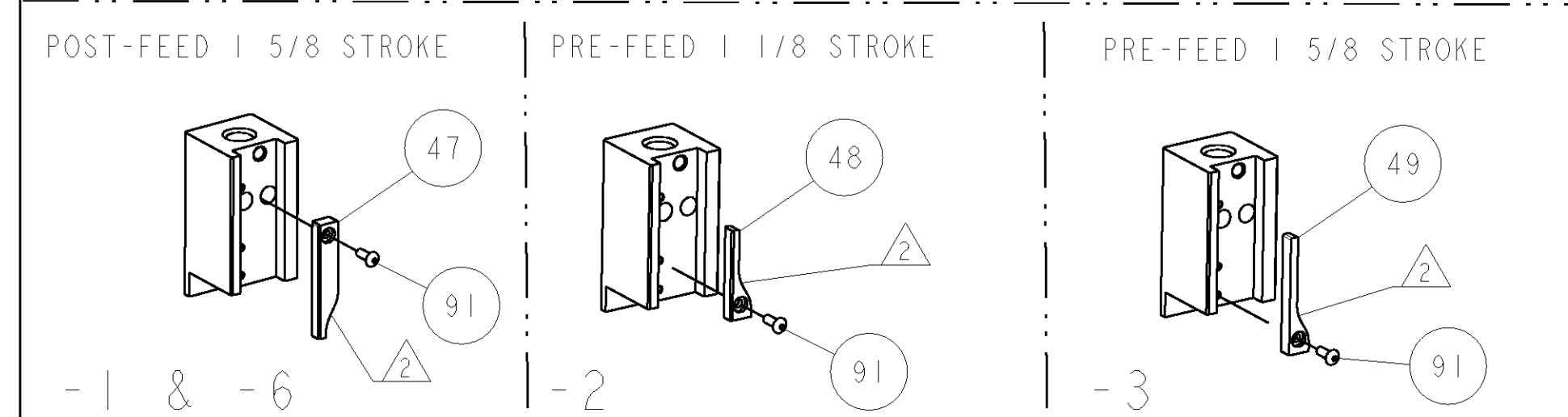
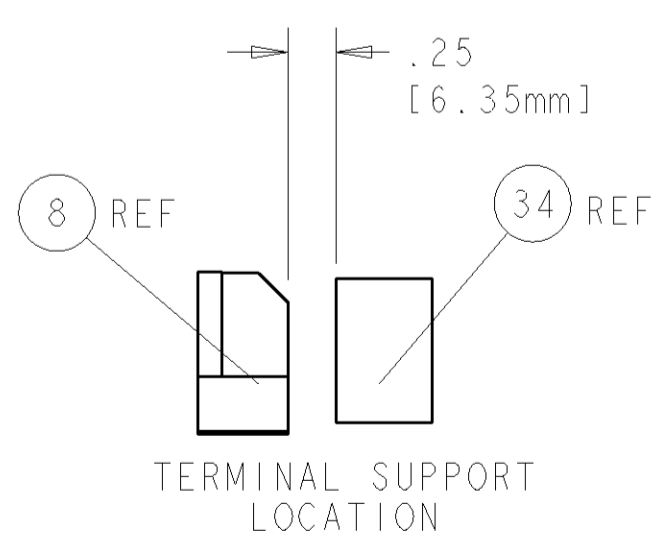
| LOC | DIST | REVISIONS | | | |
|-----|------|-----------|---------------|-----------|-----|
| A | 66 | P LTR | DESCRIPTION | DATE | DWN |
| | | A | RELEASED | 18FEB2008 | BH |
| | | B | ECR-08-016063 | 25JUN2008 | MY |

- △ RECOMMENDED SPARE PARTS
- △ GREASE LIGHTLY
- △ GUARD MUST BE IN PLACE WHEN OPERATING APPLICATOR IN A BENCH MACHINE
- △ LOC-TITE AT ASSEMBLY.

*** WARNING**
 ON INSTALLATION, SET WIRE DISC TO LARGEST WIRE SIZE SETTING. USE OF SETTINGS BELOW MIN. REQUIRED CRIMP HEIGHT SETTING WILL CAUSE DAMAGE TO CRIMP TOOLING.



| | | |
|-------------|---------------------------------------|-----|
| 690432-3 | ADJUSTMENT SCREW | 124 |
| 455749-1 | GUARD WINDOW | 116 |
| 679532-1 | INSERT, GUARD | 115 |
| 21024-2 | WASHER, SPRG LOCK, REG NO 4 | 114 |
| 21989-8 | SCR, SKT HD SHLDR 3/16 DIA X .250 | 105 |
| 5-21006-6 | SCR, SET, CUP POINT 10-32 X .750 | 99 |
| 1-21002-7 | SCR, BTN SKT HD CAP 6-32 X .375 | 91 |
| 318563-1 | GUARD, FRONT CHIP | 89 |
| 1-21000-3 | SCR, SKT HD CAP 4-40 X .250 | 85 |
| 4088040 | SF APPL INST 408-8040 | 72 |
| 217238-1 | GENERAL INSTRUCTION PKG | 71 |
| 461264-5 | PLATE, IDENTIFICATION | 67 |
| 21017-2 | SCREW, DRIVE | 66 |
| 21009-2 | SCR, SET, SELF LOCKING 1/4-20 X .250 | 63 |
| 22733-8 | SCR, BHSC, SELF-LOCKING, 8-32 X .375 | 60 |
| 2-22603-0 | SCR, HEX HD CAP 8-32 X .312 | 59 |
| 3-694433-0 | FEED PAWL | 56 |
| 2-21002-2 | SCR, BTN SKT HD CAP 8-32 X .500 | 54 |
| 2-21000-9 | SCR, SKT HD CAP 8-32 X .750 | 53 |
| 811242-8 | BUMPER, HOLD DOWN | 51 |
| 690753-1 | SPACER, TONKER | 50 |
| 690602-6 | CAM, PRE FEED, 1 5/8 | 49 |
| 690602-5 | CAM, PRE FEED, 1 1/8 | 48 |
| 690501-4 | CAM, POST-FEED 1 5/8 | 47 |
| 459456-2 | APPL. BASIC SUB ASSY (SIDE WISE MQCA) | 46 |
| 690191-1 | PLUG, NYLON | 45 |
| 1-455673-4 | RAM, SIDE FEED | 44 |
| 7-21002-9 | SCR, BTN SKT HD CAP 5/16-24 X 1.00 | 41 |
| 690125-1 | SHIM SUB-ASSY | 39 |
| 1-469367-4 | SHIM | 38 |
| 879103-3 | FINE ADJUST HEAD ASSEMBLY | 37 |
| 690786-6 | TERMINAL SUPPORT | 34 |
| 4-21028-0 | PIN, SLOTTED SPRING .094 X .750 | 33 |
| 21024-5 | WASHER, SPRG LOCK, REG NO 10 | 32 |
| 3-21000-4 | SCR, SKT HD CAP 10-32 X .375 | 31 |
| 3-458144-4 | PLATE, STRIP GUIDE | 29 |
| 1-455888-0 | SPACER, CRIMPER | 28 |
| 1-22284-0 | SPRING, COMPRESSION | 27 |
| 356835-1 | LEVER, DRAG RELEASE | 26 |
| 240792-1 | DRAG, TERMINAL | 25 |
| 690438-1 | FRONT STRIP GUIDE | 24 |
| 2-690472-0 | STRIPPER | 22 |
| 2-21000-7 | SCR, SKT HD CAP 8-32 X .500 | 21 |
| 21024-4 | WASHER, SPRG LOCK, REG NO 8 | 20 |
| 679625-1 | SHEAR HOLDER, FRONT (NO CUT) | 13 |
| 3-22280-3 | SPRING, COMPRESSION | 12 |
| 1-21000-9 | SCR, SKT HD CAP 6-32 X .375 | 11 |
| 690459-1 | SHEAR HOLDER, FRONT | 10 |
| 217234-2 | FLOATING SHEAR, FRONT | 9 |
| 9-1633117-1 | ANVIL, COMBINATION | 8 |
| 240641-5 | SPACER | 7 |
| - | - | 6 |
| 2-455889-0 | DEPRESSOR, SHEAR | 5 |
| 238011-2 | BLOCK, CRIMPER SPACER | 4 |
| 3-1213077-3 | CRIMPER, INSULATION PREMIUM | 3 |
| 455888-6 | SPACER, CRIMPER | 2 |
| 4-1490019-5 | CRIMPER, WIRE PREMIUM | 1 |



| DIMENSIONS: | | TOLERANCES UNLESS OTHERWISE SPECIFIED: | | MATERIAL: | | FINISH: | |
|-------------|------------|--|-------------|--------------|--------------|------------------|------------|
| INCHES | 9 PLC ±.01 | 1 PLC ±.01 | 3 PLC ±.001 | 4 PLC ±.0001 | ANGLE ±.0001 | PLC ±.0001 | PLC ±.0001 |
| MATERIAL | | FINISH | | WEIGHT | | CUSTOMER DRAWING | |
| - | | - | | - | | - | |

| DATE | BY | CHKD | APPD | NAME | PRODUCT SPEC | APPLICATION SPEC | SIZE | CAGE CODE | DRAWING NO | RESTRICTED TO |
|-----------|-----------|-----------|----------|----------|--------------------------------------|------------------|------|-----------|------------|---------------|
| 27JAN2008 | B. HIGMAN | B. HIGMAN | T. ELBIN | T. ELBIN | FINE ADJUST SIDE FEED HDM APPLICATOR | | A1 | 00779 | C=1855366 | |

SCALE 3:5 SHEET 1 OF 1 REV B

CUSTOMER VIEWABLE ASSEMBLY