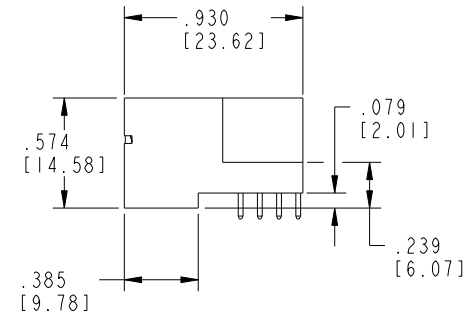
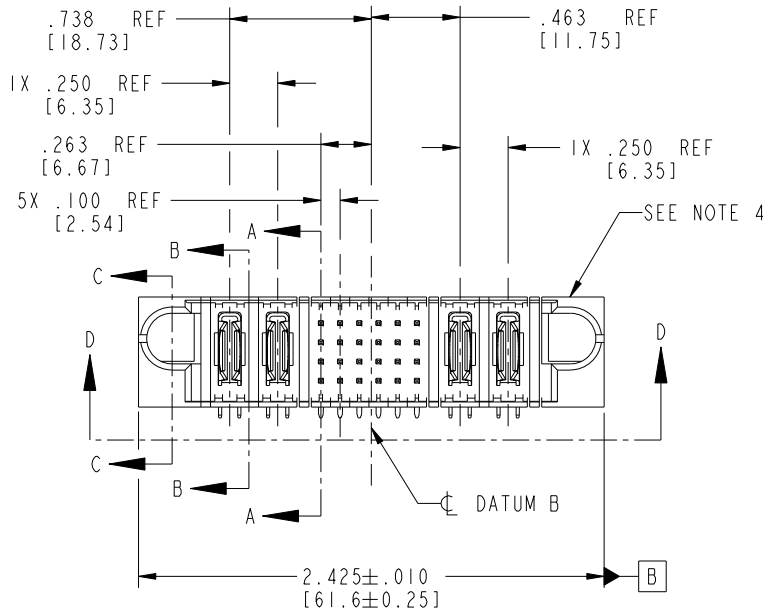
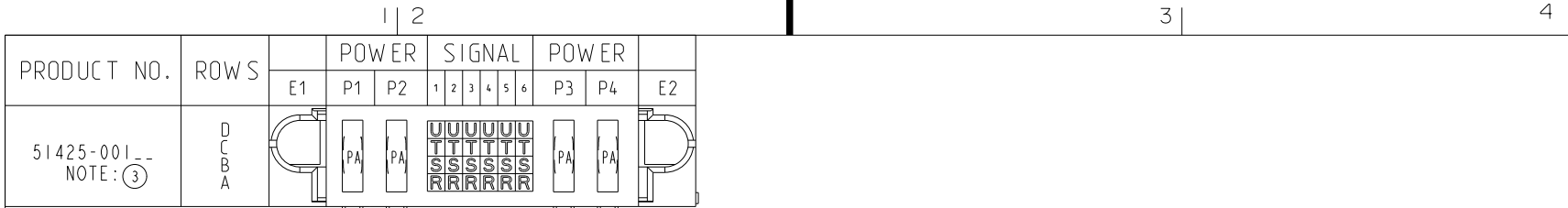


Tous droits strictement réservés. Reproduction ou communication a des tiers interdite sous quelque forme que ce soit sans autorisation écrite du propriétaire. Propriété de c FCI. Droits de reproduction FCI.



All rights strictly reserved. Reproduction or issue to third parties in any form whatever is not permitted without written authority from the proprietor. Property of FCI. Copyright FCI.



CODE	DIM "M" MATING LENGTH	DIM "T" TAIL LENGTH	CONTACT TYPE
R	.270 [6.86]	.135 [3.43]	SIGNAL
S	.270 [6.86]	.135 [3.43]	SIGNAL
T	.270 [6.86]	.135 [3.43]	SIGNAL
U	.270 [6.86]	.135 [3.43]	SIGNAL
PA	N/A [N/A]	.135 [3.43]	POWER

mat'l code				SEE NOTE 2		tolerances unless otherwise specified		CUSTOMER		 www.fciconnect.com	
ltr	ecn no.	dr	date	linear	.XX±.01/0.X±0.3		COPY		title		
A	V02392	JRW	10/9/00		.XXX±.005/0.XX±0.13		projection		2P + 24S + 2P		
B	V12515	JWS	10/29/01	angles	.XXX±.0020/0.XXX±0.051				RIGHT ANGLE SOLDER HEADER		
C	DG05-0242	SJ	07/26/05		0° ± 2°				product family		code
D	DG06-0011	CS	01/12/06	dr	J. SHAFFER	10/29/01	INCH/MM		PwrBlade		213
E	DG08-0266	W D	09/21/08	engr	J. ALLISON	10/29/01	scale		size	dwg no	sheet
				chr	J. ALLISON	10/29/01	1:1		A	51425	1 of 4
				appd	J. ALLISON	10/29/01					
sheet index	revision sheet	E	E	E	E	E					
		1	2	3	4						

Pro/E

PDM: Rev: E

STATUS: Released

Printed: Dec 20, 2010

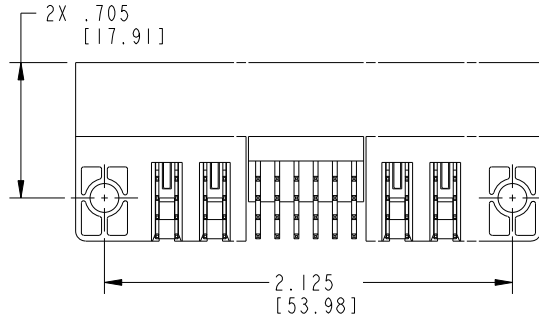
cage code 28556

Tous droits strictement réservés. Reproduction ou communication a des tiers interdite sous quelque forme que ce soit sans autorisation écrite du propriétaire. Propriété de c FCI. Droits de reproduction FCI.

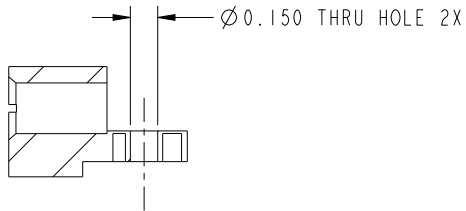
All rights strictly reserved. Reproduction or issue to third parties in any form whatever is not permitted without written authority from the proprietor. Property of FCI. Copyright FCI.



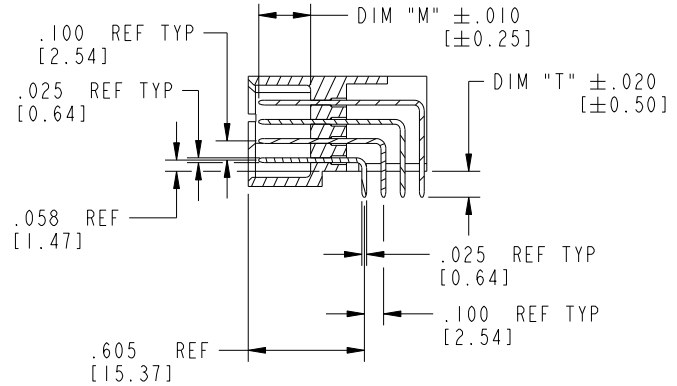
PRODUCT NUMBER  
51425-001--  
NOTE: ③



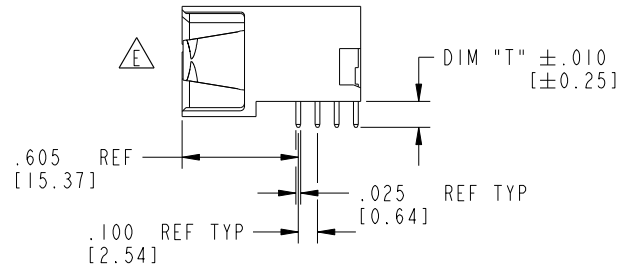
SECTION D-D



SECTION C-C



SECTION A-A



SECTION B-B

mat'l code		SEE NOTE 2		tolerances unless otherwise specified		CUSTOMER		 www.fciconnect.com	
ltr	ecn no.	dr	date	linear	.XX±.01/0.X±0.3	COPY		title	
E					.XX±.005/0.XX±0.13	projection		2P + 24S + 2P	
				angles	.XXX±.0020/0.XXX±0.051			RIGHT ANGLE SOLDER HEADER	
				dr	J. SHAFFER 10/29/01	INCH/MM		product family	
				engr	J. ALLISON 10/29/01	scale		PwrBlade	
				chr	J. ALLISON 10/29/01	1:1		code	
				appd	J. ALLISON 10/29/01			213	
sheet index		revision sheet				A		51425	
								2 of 4	

cage code 22526

Pro/E

PDM: Rev: E

STATUS: Released

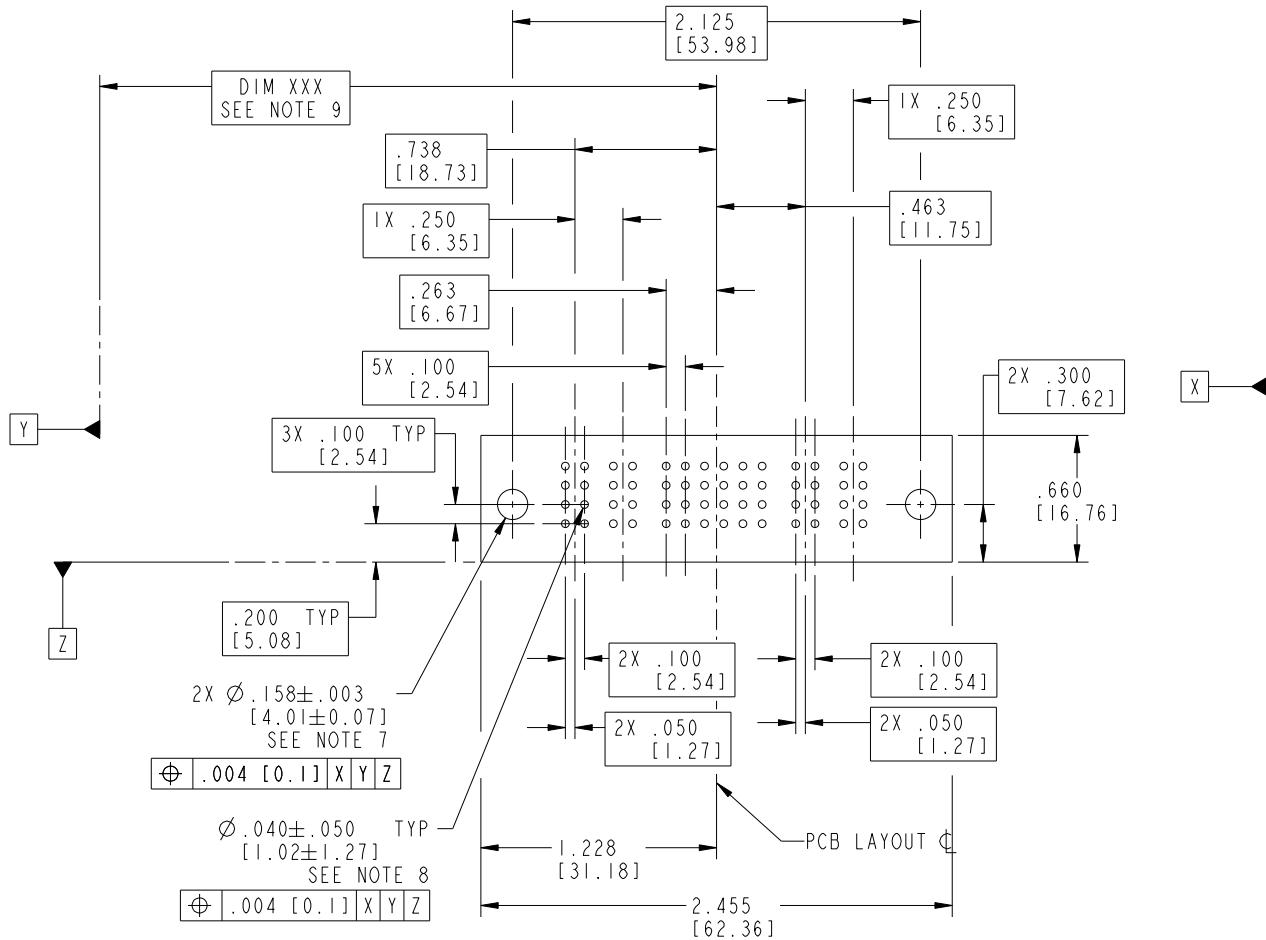
Printed: Dec 20, 2010

Tous droits strictement réservés. Reproduction ou communication a des tiers interdite sous quelque forme que ce soit sans autorisation écrite du propriétaire. Propriété de c FCI. Droits de reproduction FCI.



All rights strictly reserved. Reproduction or issue to third parties in any form whatever is not permitted without written authority from the proprietor. Property of FCI. Copyright FCI.

PRODUCT NUMBER  
51425-001--  
NOTE: ③



RECOMMENDED PCB LAYOUT

mat'l code		SEE NOTE 2		tolerances unless otherwise specified		CUSTOMER		 www.fciconnect.com	
ltr	ecn no.	dr	date	linear	.XX±.01/0.X±0.3	COPY		title	
E				angles	.XXX±.005/0.XX±0.13	projection		2P + 24S + 2P	
					.XXX±.0020/0.XXX±0.051			RIGHT ANGLE SOLDER HEADER	
				dr	0°±2°	INCH/MM		product family	
				enrg	J. SHAFFER 10/29/01	scale		PwrBlade	
				chr	J. ALLISON 10/29/01	1:1		code	
				appd	J. ALLISON 10/29/01	A		213	
sheet index	revision sheet					size		sheet	
						51425		3 of 4	

Pro/E

PDM: Rev: E

STATUS: Released

Printed: Dec 20, 2010

cage code 28526

PRODUCT NUMBER  
 51425-001--  
 NOTE: ③

NOTES:

1. DIMENSIONS AND TOLERANCES ARE IN ACCORDANCE WITH ASME Y14.5M, 1994 UNLESS OTHERWISE SPECIFIED.

CONNECTORS NOTES:

② HOUSING MATERIAL: UL 94 V-0 GLASS FILLED HIGH TEMP THERMO PLASTIC  
 POWER CONTACT MATERIAL: COPPER ALLOY  
 SIGNAL PIN MATERIAL: COPPER ALLOY

⚠③ SEE ITEM 1 & 2 IN PRINT 10064183 FOR PLATING SPEC OF 51425-001 AND 51425-001LF RESPECTIVELY.

4. "MANUFACTURER" NAME, P/N, AND DATE CODE TO APPEAR ON THIS SURFACE.

5. PRODUCT SPECIFICATION GS-12-149.

PCB - NOTES:

6. ALL HOLE DIAMETERS ARE FINISHED HOLE SIZE.

⑦ HOLD DOWN THROUGH HOLES ARE UNPLATED.

⑧  $\varnothing .0453 \pm 0.0010$  [1.151  $\pm$  0.025] DRILLED HOLES PLATED WITH  
 0.0003 [0.008] MIN SnPb OVER .001 [0.03]  
 TO .003 [0.08] Cu PLATING TO ACHIEVE  
 $\varnothing .040 \pm .003$  [1.02  $\pm$  .07] HOLE.

⑨ "DIM XXX" TO BE DETERMINED BY THE CUSTOMER.

10. ⚠SYMBOL WILL BE NEXT TO ANY DIMENSION, VIEW, OR NOTE WHICH HAS BEEN MODIFIED  
 WITH THE CURRENT DRAWING REVISION.

mat'l code		SEE NOTE 2		tolerances unless otherwise specified		CUSTOMER		FCI	
ltr	ecn no.	dr	date	linear	.XX±.01/0.X±0.3	COPY		www.fciconnect.com	
E				projection	.XXX±.005/0.XX±0.13	⊕		title 2P + 24S + 2P	
				angles	.XXXX±.0020/0.XXX±0.051	⊕		RIGHT ANGLE SOLDER HEADER	
				dr	0° ± 2°	INCH/MM		product family PwrBlade	
				engr	J. SHAFFER 10/29/01	scale 1:1		code 213	
				chr	J. ALLISON 10/29/01	A		size 51425	
				appd	J. ALLISON 10/29/01			sheet 4 of 4	
sheet index	revision sheet								

Tous droits strictement réservés. Reproduction ou communication a des tiers interdite sous quelque forme que ce soit sans autorisation écrite du propriétaire. Propriété de c FCI. Droits de reproduction FCI.



All rights strictly reserved. Reproduction or issue to third parties in any form whatever is not permitted without written authority from the proprietor. Property of FCI. Copyright FCI.